



NYC Criminal Justice

NYC DDC Department of Design and Construction

Borough-Based Jails

COMMUNITY DESIGN INPUT WORKSHOP FOR THE BROOKLYN Facility

January 23, 2024



BK

Brooklyn Borough Based Jail

Agenda

- 1 Community Engagement & Design Input Process
- 2 Facility Design Presentation
- 3 Work Sessions at Focus Areas
- 4 Community Feedback Exercise
- 5 Share Out from Work Sessions
- 6 Closing

Brooklyn

Community Engagement & Design Input Process

Brooklyn Facility Design Engagement Process

**Presentation materials and video recordings of prior workshops are available on the BBJ website:*

www.rikers.cityofnewyork.us

PRIOR EVENTS:

A) Community introductory meeting for the Brooklyn Facility

- **Date:** July 27, 2023

B) Two community design workshops and one Community Board 2 presentation

- **Dates:**
 - **Workshop I - September 7, 2023** (+ online feedback period 9/8-9/20)
 - **Workshop II - October 2, 2023** (+ online feedback period 10/3-10/10)
 - **Community Board 2 Land Use Committee - October 18, 2023**

CURRENT/UPCOMING EVENTS:

C) One community design workshop and one Community Board 2 presentation

- **Workshop III – January 23, 2024** (+ online feedback period 01/24 – 02/07)
- **Community Board 2 Land Use Committee – February 21, 2024**
- **Purpose:** Receive and incorporate community input before PDC Preliminary Review

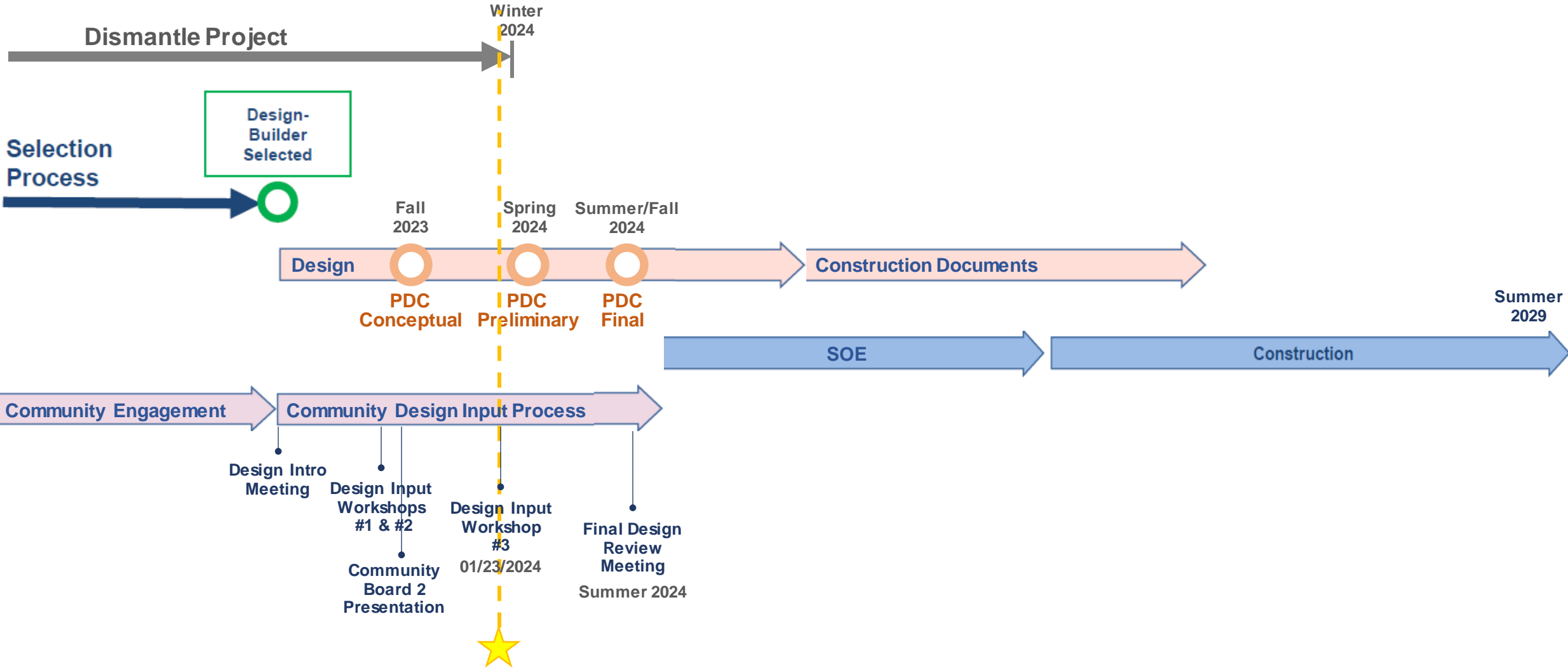
D) One additional community presentation

- **Estimated Date:** Summer 2024
- **Purpose:** To report back before PDC Final Review to show how community feedback was incorporated

The community engagement schedule will be developed in coordination with Percent for Art timeline/inclusion and Public Design Commission (PDC) timeline



BBJ Design-Build & Engagement Process



Community Resources During Construction



BBJ Website

<https://rikers.cityofnewyork.us/>



Designated Phone Number



Weekly Look Ahead



72-Hour Advisories for Impactful Construction Activities



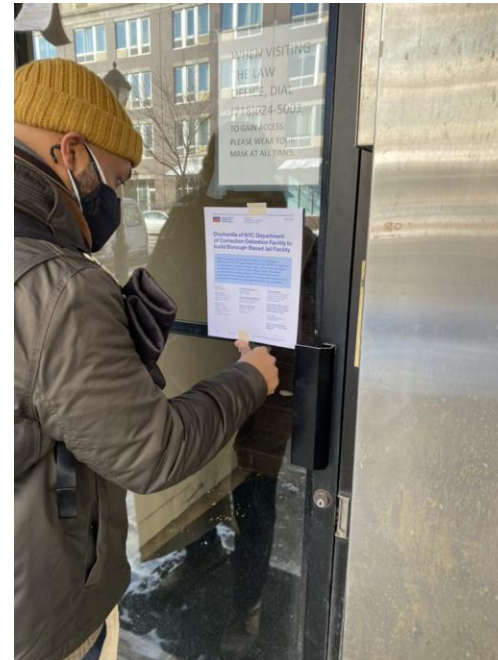
Community Construction
Liaison & Field Office

Lucien Allen Brooklyn BBJ CCL

(917) 270-2370 / BrooklynCCL@bbjnyc.com

360 Atlantic Avenue

Monday – Friday 7:00am - 3:30pm



Brooklyn

Justice & Equity in Design

An aerial photograph of a dense urban landscape, likely New York City, featuring a mix of high-rise skyscrapers and lower-density residential buildings. A body of water is visible in the upper left corner. The image is overlaid with a semi-transparent dark layer to enhance the readability of the white text.

GUIDING PRINCIPLES

FOCUS ON DIGNITY AND RESPECT

ENSURE SAFETY AND SECURITY

CONNECT WITH COMMUNITY AND FAMILIES

CREATE A CIVIC ASSET

ACHIEVE EXCEPTIONAL DESIGN

PRIORITIZE ENVIRONMENTAL STEWARDSHIP

FOCUS ON DAYLIGHT & WELLBEING

ENSURE CONSTRUCTIBILITY

ACHIEVE ECONOMICAL DESIGN

OPTIMIZE BUILDING PERFORMANCE

DESIGNING FOR EQUITY

DESIGN BUILDINGS AND SPACES WHERE ALL HUMAN NEEDS ARE MET IN AN EQUITABLE AND SUSTAINABLE MANNER.

FOSTER COMMUNITIES WHERE ALL PEOPLE HAVE EQUAL ACCESS TO SHELTER, HEALTH AND NATURE.

DESIGN SPACES THAT ENRICH AND INSPIRE ALL PEOPLE.



Preliminary illustration for discussion purposes only

DESIGNING FOR WELL-BEING



SAFETY

Throughout the Facility, people feel physically and psychologically safe



TRUSTWORTHINESS + TRANSPARENCY

Decisions are made with transparency and with the goal of building and maintaining trust



PEER SUPPORT

Individuals with shared experiences are integrated into the organization and viewed as integral to service delivery



COLLABORATION

Participants work together to make determinations on programs, schedule and activities that affect people in the space



EMPOWERMENT

People's strengths are recognized, built on, and validated – this includes a belief in resilience and the ability to heal from trauma



RESPONSIVENESS

Biases and stereotypes (e.g., based on race, ethnicity, sexual orientation, age, geography) and historical trauma are recognized and addressed

GUIDING PRINCIPLES

NATURAL LIGHT

CIVIC ASSET

ACCESS TO OUTDOOR

MEDICAL TREATMENT

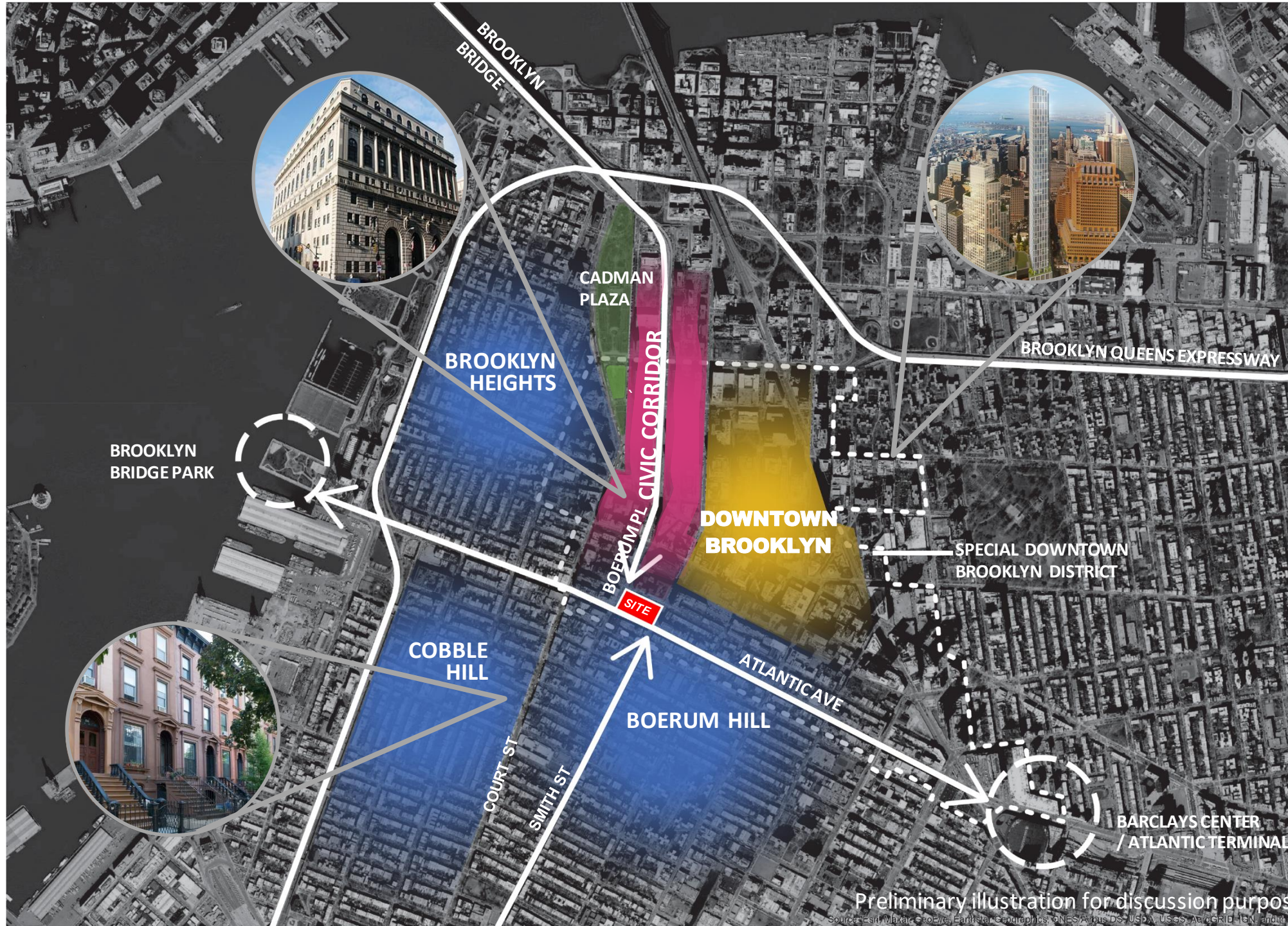
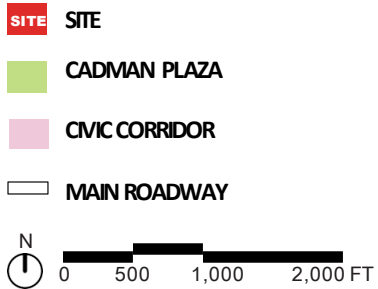
COUNSELING

PROGRAMS & EDUCATION

VARIETY OF MATERIALS, COLORS & TEXTURES

NORMALIZE THE SPACE

INTERSECTION OF THREE IDENTITIES



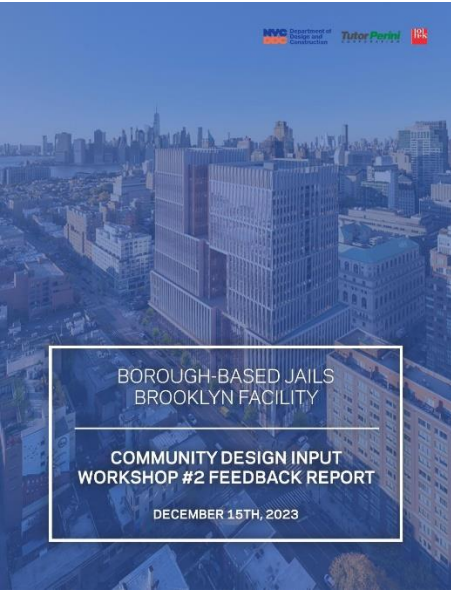
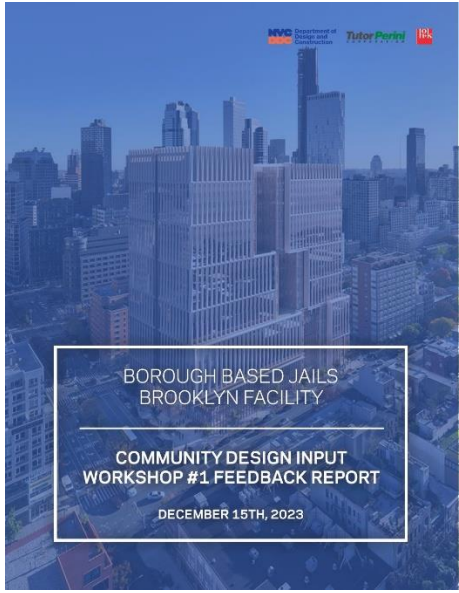
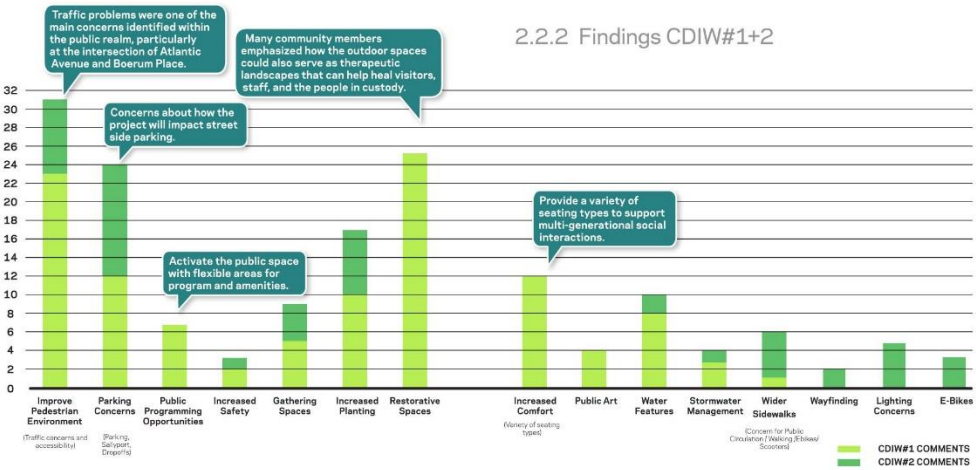
Preliminary illustration for discussion purposes
Source: Esri, Maxar, GeoEye, Earthstar, GeoGraphics, IGN, Swire, USGS, AeroGRID, IGN, and the

SCULPTED BY LIGHT



Preliminary illustration for discussion purposes only. Materials, color and furniture will continue to be explored.

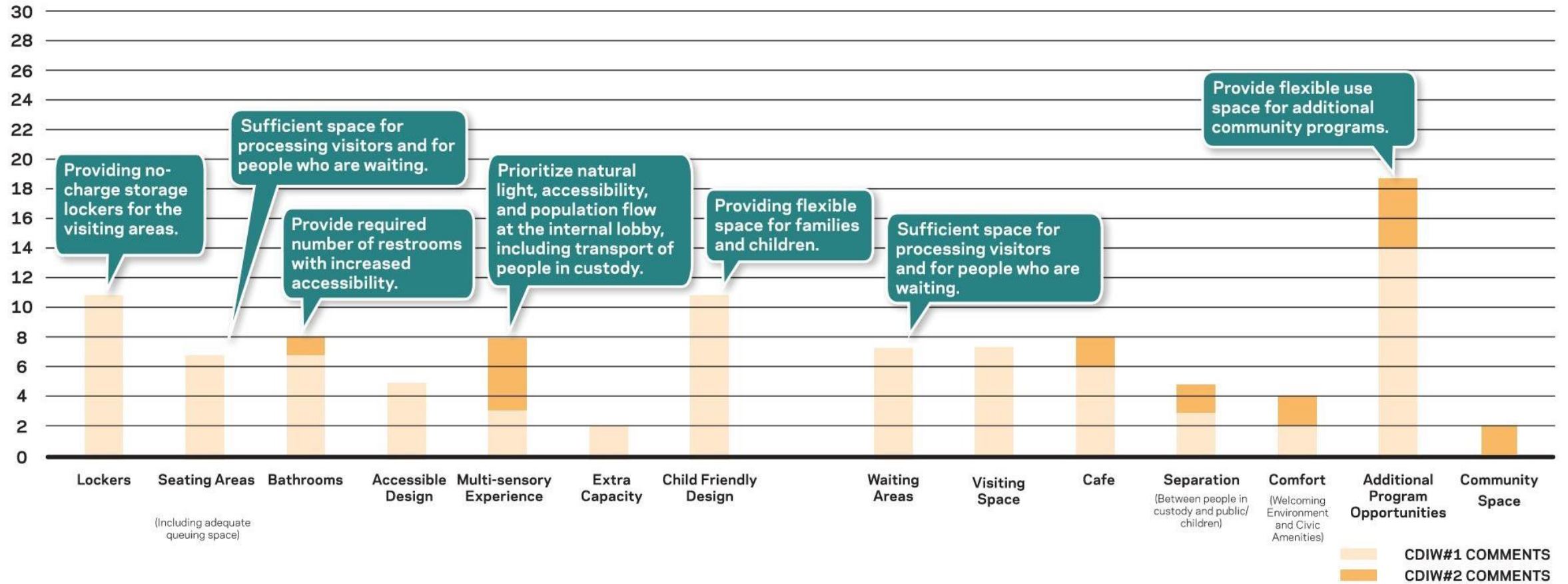
FEEDBACK ANALYSIS METHODOLOGY



Brooklyn

Interior Public Spaces

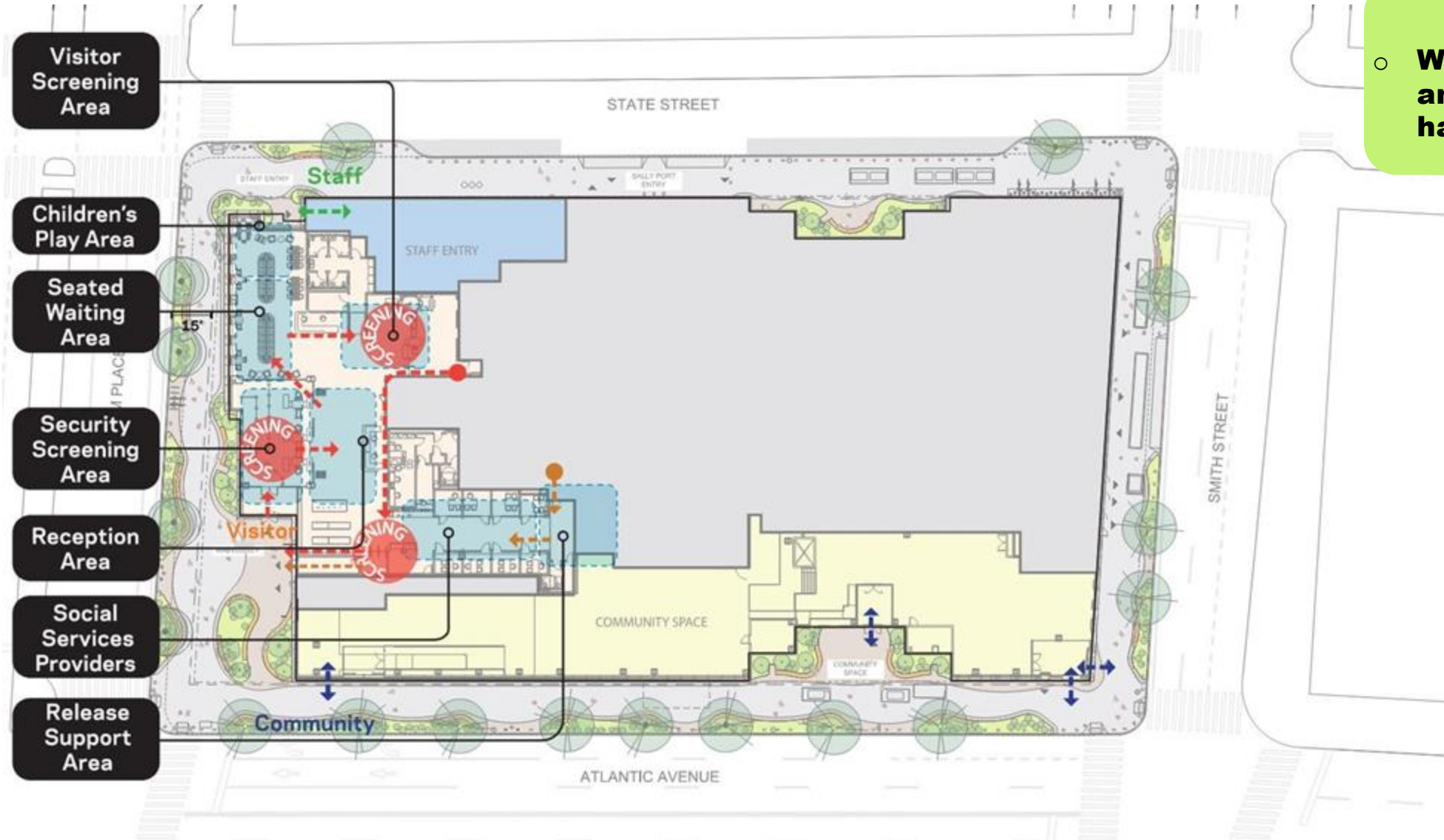
WHAT WE HEARD - INTERIOR PUBLIC SPACE



INTERIOR PUBLIC SPACE - IMPLEMENTING KEY TAKEAWAYS

- **Multi-sensory experience** with access to natural light and warm materials is an essential feature for the proposed Facility. **Universal design** has been implemented throughout the Facility.
- **Welcoming entrances and clear visitor flow** have been provided.
- Adequate space for visitors has been provided both for **queueing and seating in waiting areas**. This was to ensure that visitors would not need to wait outside.
- **Lockers and restrooms with accessible design** have been provided.
- **Flexible community space** is provided in the building. Additionally, the lobby includes space for social services.

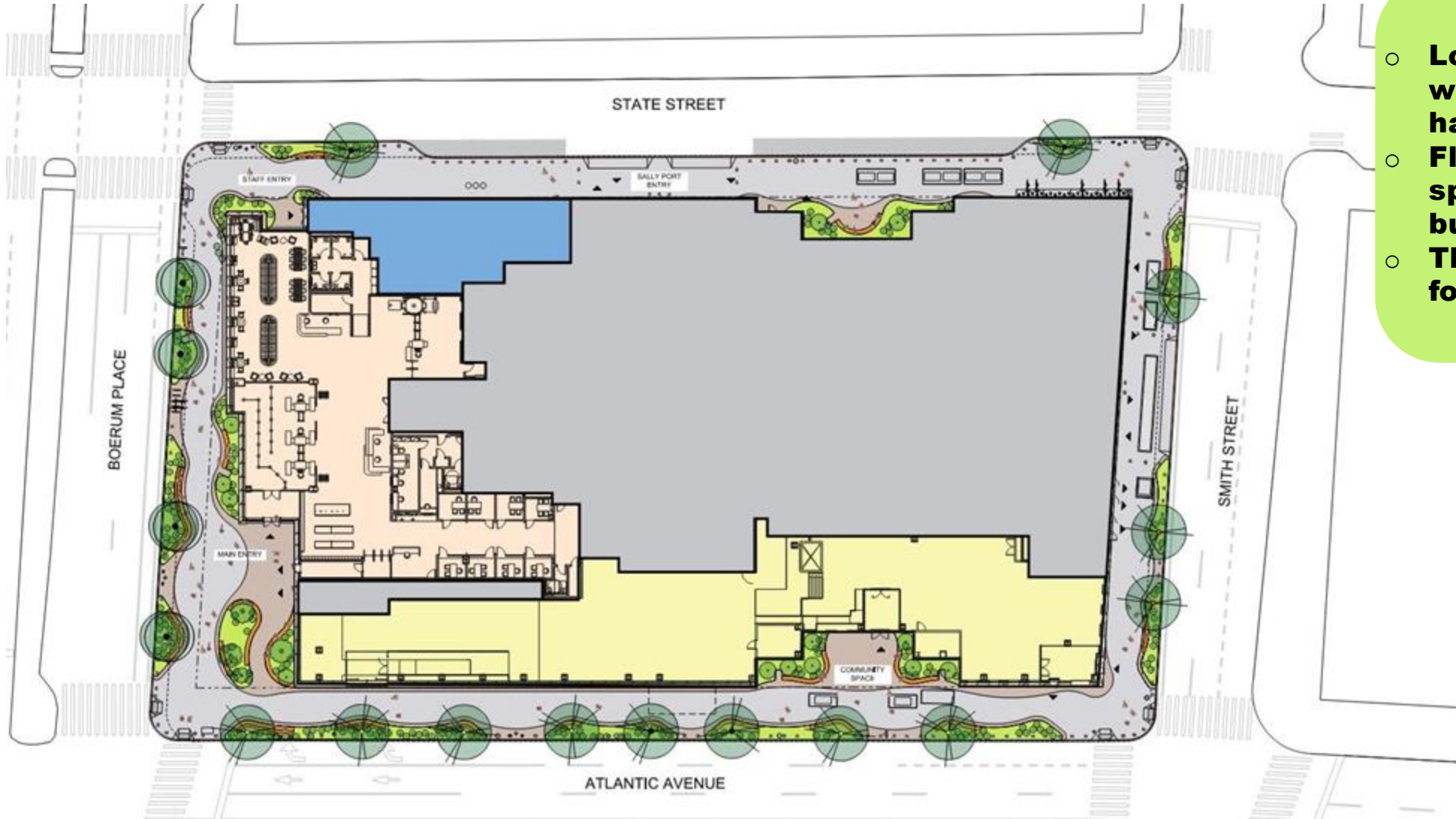
CIRCULATION DIAGRAM



Design Update

- Welcoming entrances and clear visitor flow have been provided.

GROUND FLOOR PLAN



Design Update

- **Lockers and restrooms with accessible design have been provided.**
- **Flexible community space is provided in the building.**
- **The lobby includes space for social services.**

INTERIOR VIEW OF LOBBY

Design Update

- **Multi-sensory experience with access to natural light and warm materials is an essential feature for the proposed Facility.**
- **The lobby includes space for social services.**



INTERIOR VIEW OF LOCKERS



Design Update

- **Multi-sensory experience with access to natural light and warm materials is an essential feature for the proposed Facility.**
- **The lobby includes space for social services.**

INTERIOR VIEW OF LOBBY

Design Update

- **Multi-sensory experience with access to natural light and warm materials is an essential feature for the proposed Facility. Universal design has been implemented throughout the Facility.**

INTERIOR VIEW OF LOBBY

Design Update

- Adequate space for visitors has been provided both for queueing and seating in waiting areas.
- Separate seating areas for different age groups and group sizes.

INTERIOR VIEW OF VISITING - CONTACT

Design Update

- Adequate space for visitors has been provided both for queueing and seating in waiting areas.
- Separate seating areas for different age groups and group sizes.



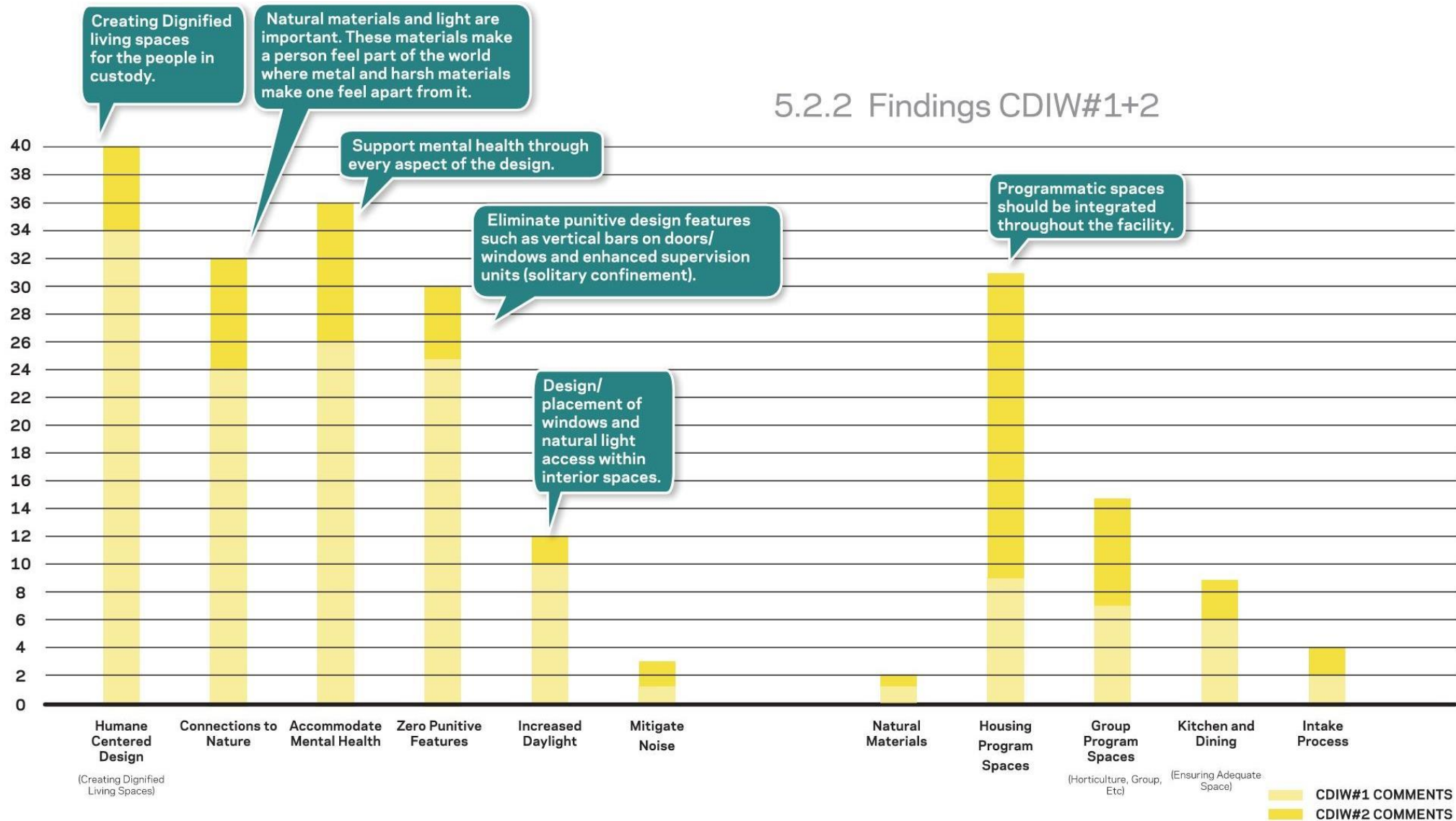
INTERIOR VIEW OF VISITING – NON CONTACT



Brooklyn

Interior Spaces

WHAT WE HEARD – INTERIOR SPACES



INTERIOR SPACES – IMPLEMENTING KEY TAKEAWAYS

- **Human-centric design** is focused on dignity and respect for people in custody. All housing units will have increased access to **medical/mental health treatment** areas in the cluster.
- **Direct access to outdoor space** is provided in every living unit. **A horticulture program** is provided in the Facility.
- All living areas have clear sightlines providing **a safe environment for people in custody**. Additionally, there are no vertical bars at the windows.
- All housing cells have windows and **access to direct daylight**. All living spaces have access to daylight.
- Program spaces are provided with all living spaces. Additionally, the Facility hosts **a wide variety of programs** including horticulture, culinary arts, library, chapel, gymnasium, medical facilities, etc.

TYPICAL GENERAL POPULATION DAY SPACE

Design Update

- **Human-centric design is focused on dignity and respect for people in custody.**

Preliminary illustration for discussion purposes only. Materials, color and furniture will continue to be explored.

TYPICAL THERAPEUTIC DAY SPACE



Preliminary illustration for discussion purposes only. Materials, color and furniture will continue to be explored.

TYPICAL CELL UNIT



Design Update

- **All housing cells have windows and access to direct daylight.**

TYPICAL RECREATION YARD

Design Update

- **Direct access to outdoor space is provided at every living unit.**
- **There will be other exercise equipment in dayroom.**

HORTICULTURE PROGRAM

Design Update

- **A horticulture program is provided in the Facility.**

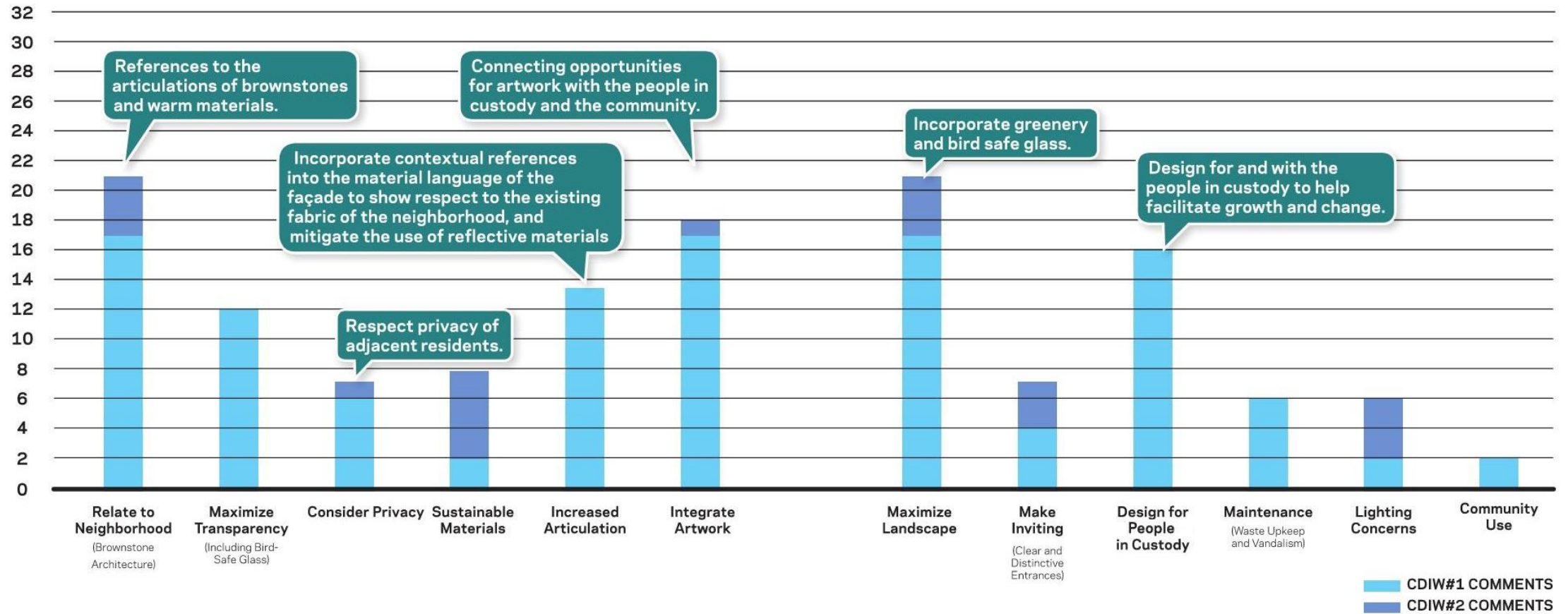




Brooklyn

ARCHITECTURE

WHAT WE HEARD – ARCHITECTURE



ARCHITECTURE – IMPLEMENTING KEY TAKEAWAYS

- **Designing for the human scale** is a favored universal design strategy. Designing appropriate eye-level details and warm materiality has been incorporated into most elements of the Facility.
- Recreation yards at the center of the building were appreciated to **respect the privacy of neighboring residents**. To further increase privacy, recreation yards on the east have also been configured towards the center of the building with tall screening to minimize cross-viewing.
- Through the **Percent for Art program**, the Facility will incorporate art. City agencies will also seek community engagement through the process.
- **LEED Gold Certification** is seen as a positive credential from the community. Many sustainability topics are addressed such as bird mitigation, overshadowing, photovoltaics, and light pollution.
- Design is based **on principles of dignity, respect**, and rehabilitation. The Facility will include programming for education, counseling, and horticulture.

BUILDING BASE UPDATE

Design Update

- **Designing appropriate eye level details and warm materiality has been incorporated into most elements of the Facility.**

Preliminary illustration for discussion purposes only. Materials, color and furniture will continue to be explored.

BUILDING BASE UPDATE

Design Update

- **LEED Gold Certification** is seen as a positive credential from the community. Many sustainability topics are addressed such as bird mitigation, overshadowing, photovoltaics, and light pollution.

Preliminary illustration for discussion purposes only. Materials, color and furniture will continue to be explored.

MATERIAL BOARD



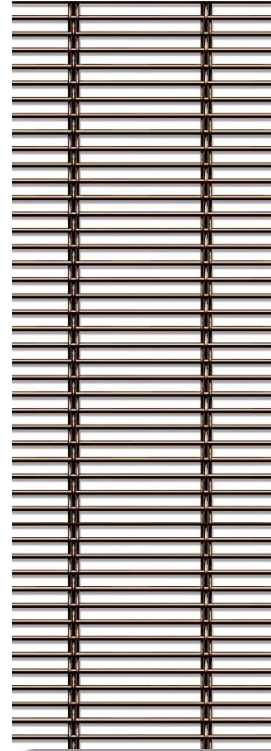
METAL PANEL 1



METAL PANEL 2



VISION &
SPANDREL
GLASS



METAL MESH

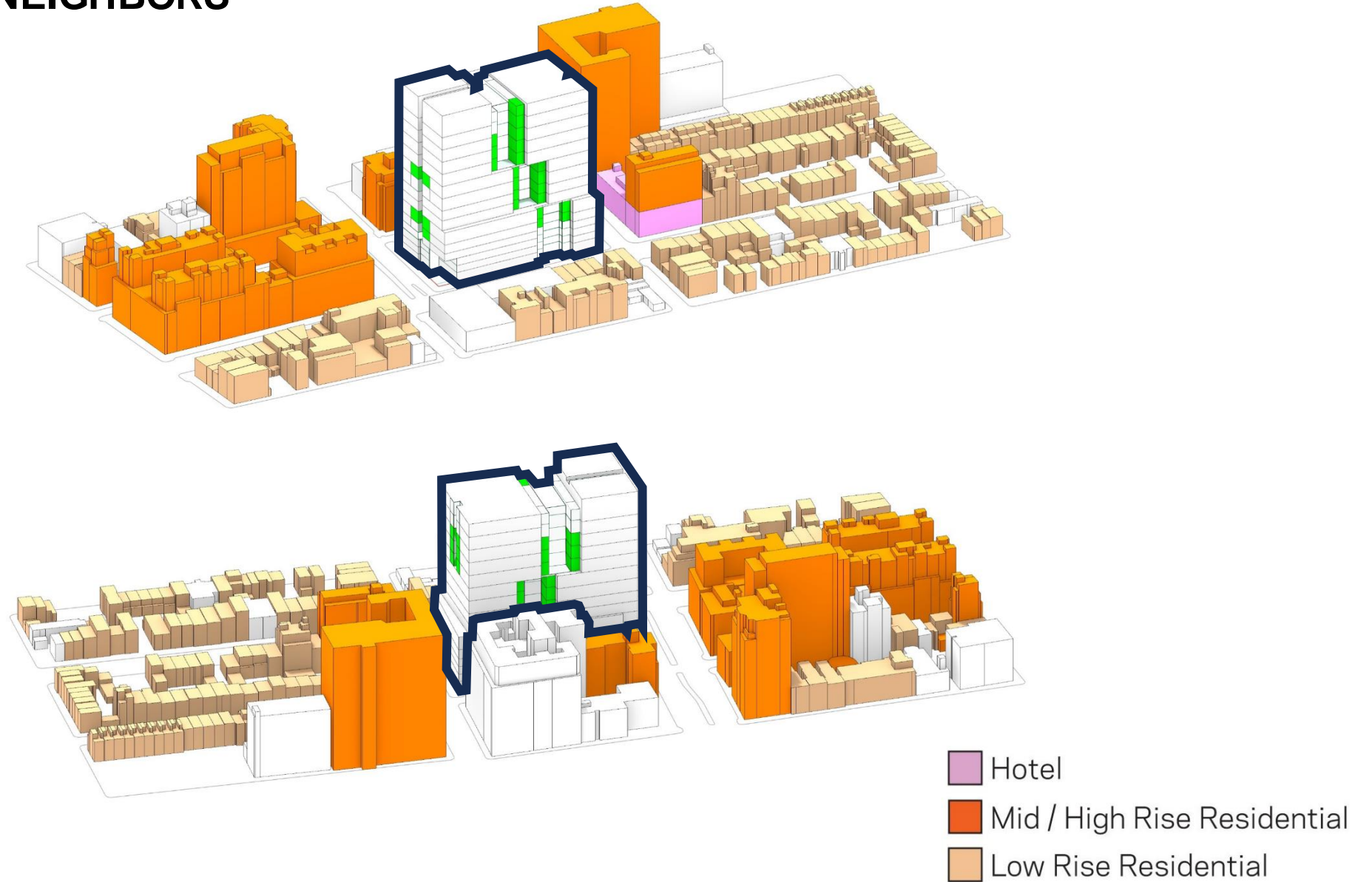


WOOD LOOK
PANELS



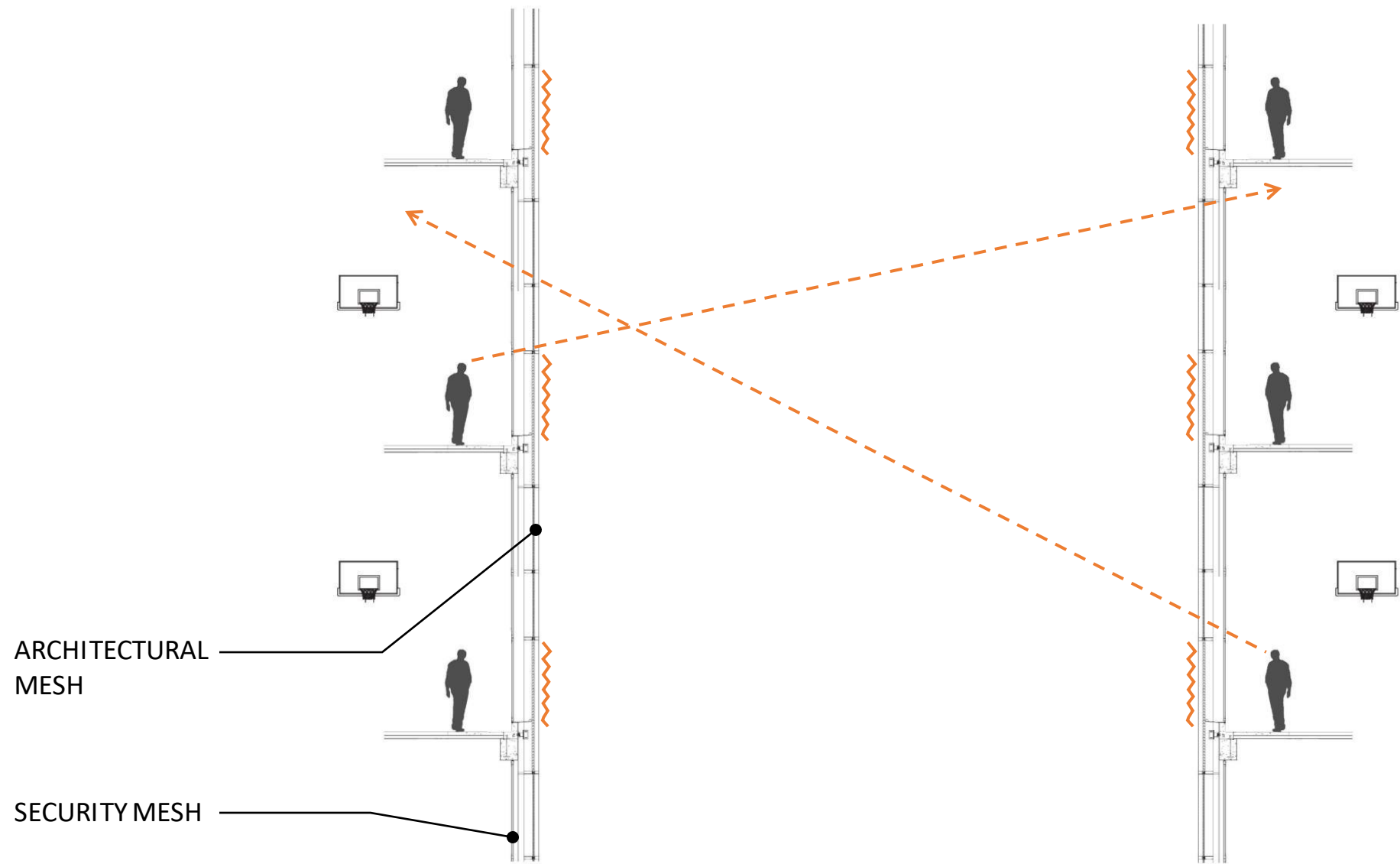
JET MIST
HONED BLACK
GRANITE

RELATIONSHIP TO NEIGHBORS



Preliminary illustration for discussion purposes only. Materials, color and furniture will continue to be explored.

RECREATION YARD SECTION SIGHTLINE



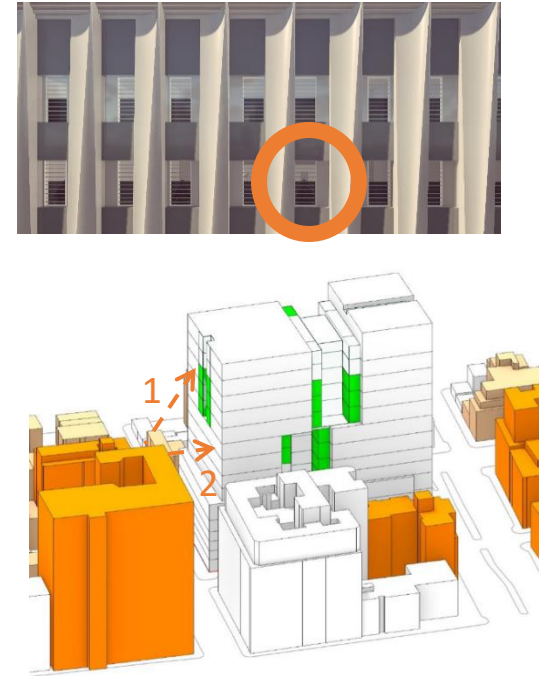
RESPECTING PRIVACY OF NEIGHBORS



View of east side **recreation area** from residential building at corner of State Street and Smith Street, privacy protected through visual screen up to 6'.



Typical exterior view of a **housing cell window**, privacy protected through visual screen up to 6'.

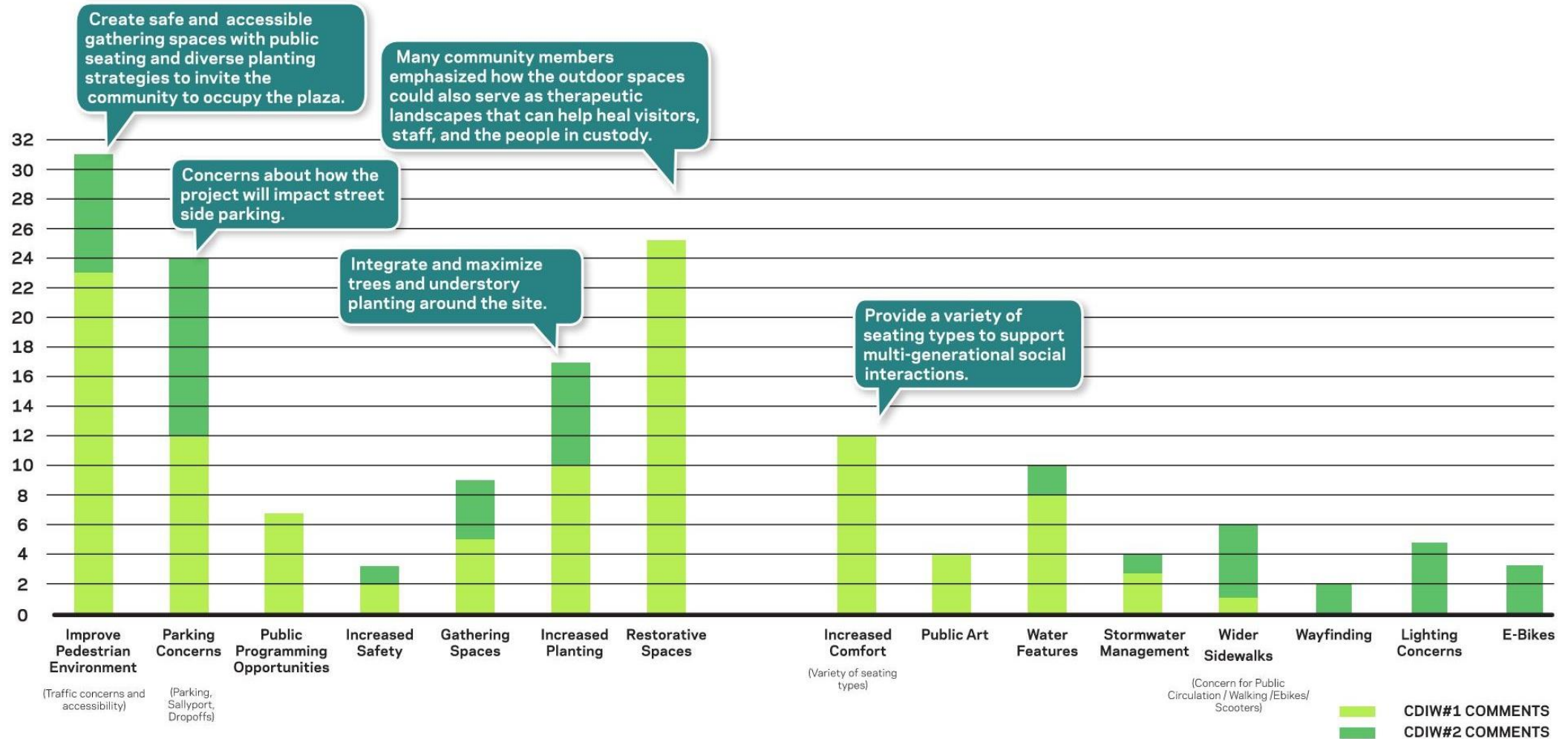




Brooklyn

Public Realm

WHAT WE HEARD – DESIGNING FOR A NEW PUBLIC REALM



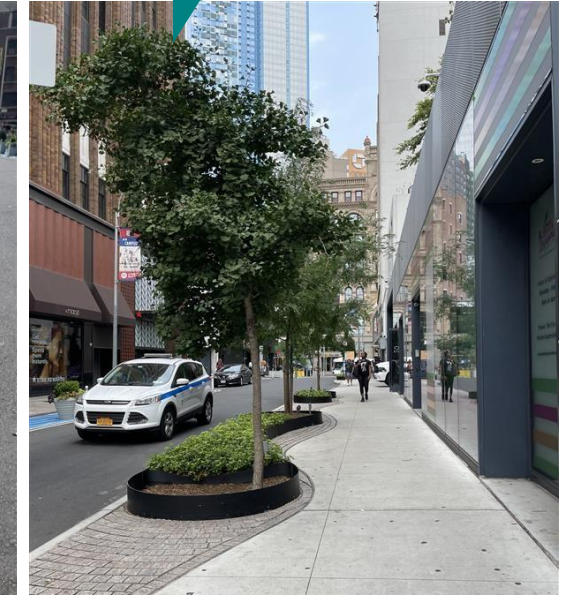
PUBLIC REALM– IMPLEMENTING KEY TAKEAWAYS

- **Improving the pedestrian environment**, particularly at the intersection of Atlantic Avenue and Boerum Place. Wider sidewalks have been provided to the streetscape. **Landscape security barriers** are softer and more integrated into the planters while reducing the visual weight of these elements.
- **Increased planting zones** have been provided throughout the streetscape.
- **Outdoor spaces also serve as therapeutic landscapes** that can help heal visitors, staff, and the people in custody. **Landscape design** should feel safe, native, and well-maintained along the public edges in downtown Brooklyn.
- A variety of seating supports **neurodiverse** (people experience and interact with the world in different ways) **and multi-generational social interactions.**

DOWNTOWN BROOKLYN STREET TREES



Fulton Street

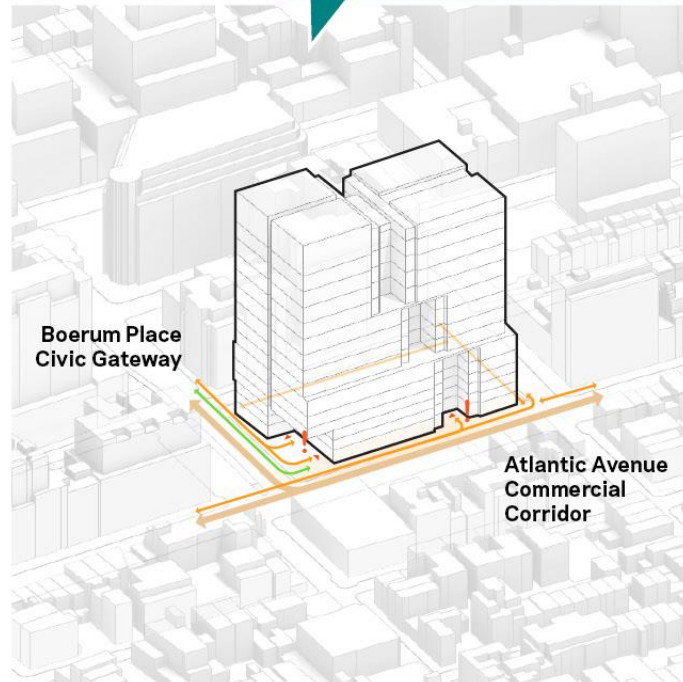


We're exploring how to create a continuous urban public realm experience by embracing the Downtown Brooklyn street tree bed and landscape design

Hoyt Street

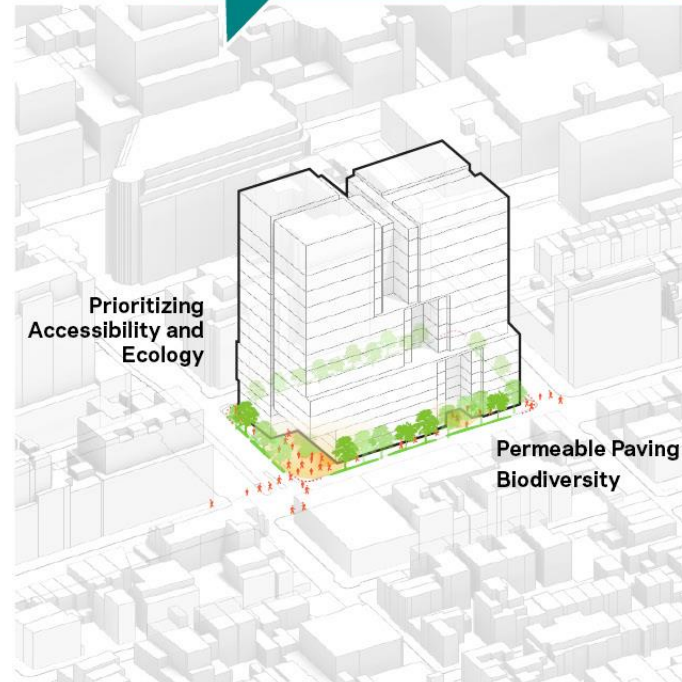
IMPROVE CONNECTIONS

By understanding how pedestrians, cyclists, and commuters engage with the site, we can optimize key areas to suit the needs for the public realm vision.



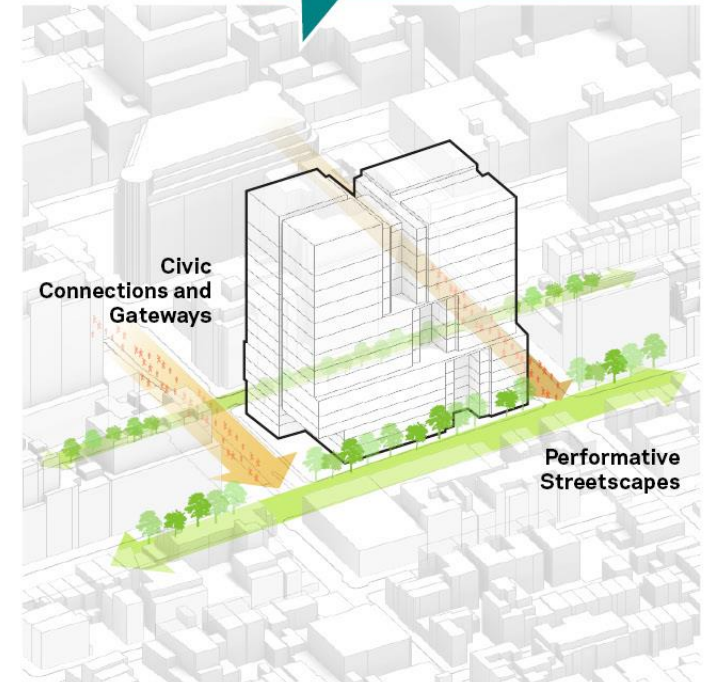
Improve Public Realm Connections

The streetscape and public realm design utilizes future-forward approaches, such as porous paving and layouts, corresponding with a greater vision of creating a welcoming urban experience for all.



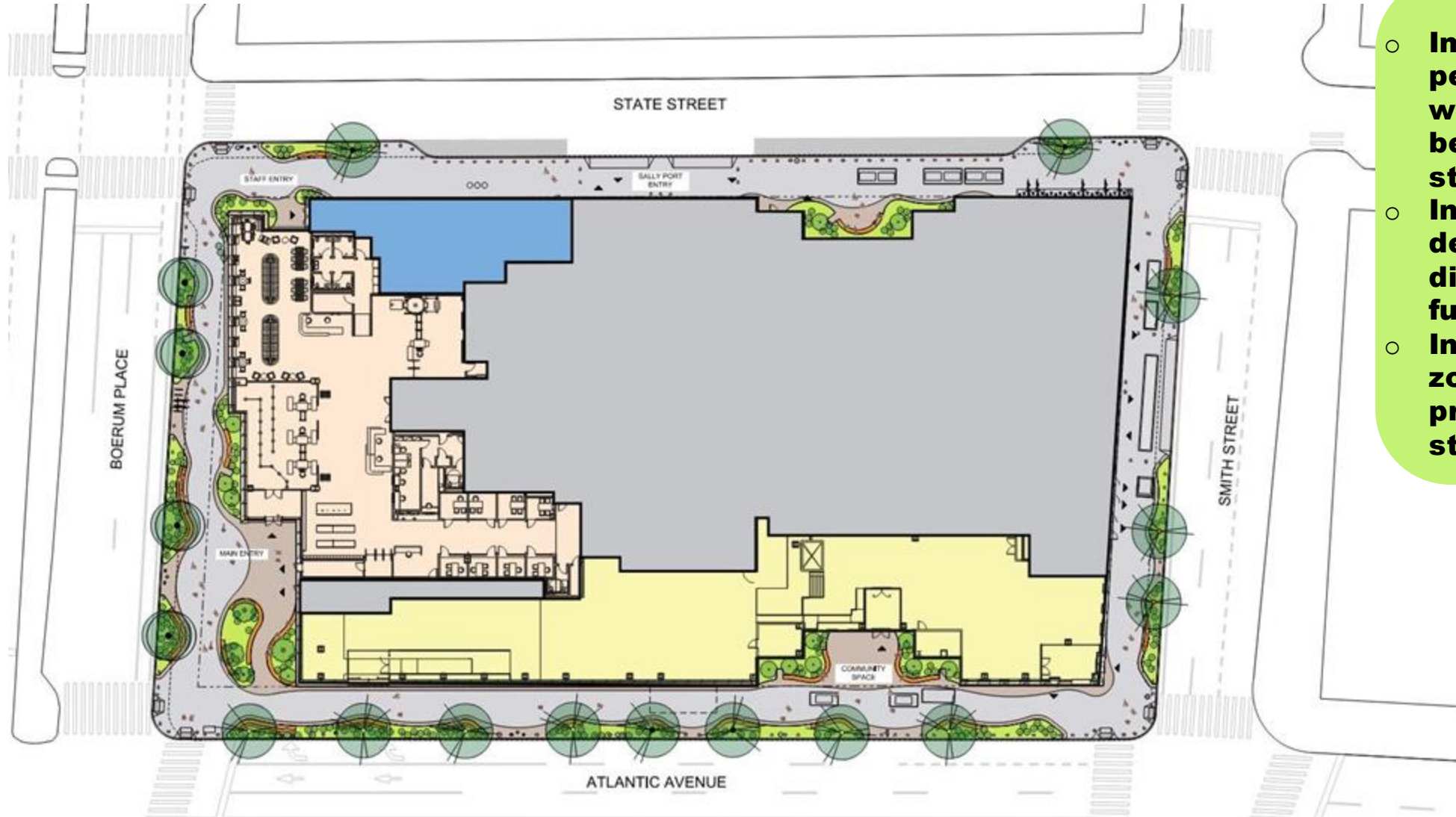
Enhance Civic Experience

An inviting streetscape will enhance the public realm around the site and act as a cornerstone connecting users to Downtown Brooklyn and its surrounding communities!



Create a Community Cornerstone

DESIGN FOR A NEW PUBLIC REALM



Design Update

- Improving the pedestrian environment, wider sidewalks have been provided to the streetscape.
- Integrated security design elements within diverse seating and furnishing types.
- Increased planting zones have been provided throughout the streetscape.

STREETSCAPE TOOLKIT



**K-12 Security
Bollards**



**Crash Rated
Bike Racks**



**Crash Rated Concrete
Seatwall with Planter**



Porous Rooms

Guiding Elements

CORNER OF BOERUM PLACE AND ATLANTIC AVENUE EXPERIENCE

Design Update

- **A variety of seating supports neurodiverse (people experience and interact with the world in different ways) and multi-generational social interactions.**

Preliminary illustration for discussion purposes only. Materials, color and furniture will continue to be explored.

CORNER OF STATE STREET AND SMITH STREET EXPERIENCE

Design Update

- Increased planting zones are accommodated throughout the streetscape.
- Access to Citi bikes are provided.

Preliminary illustration for discussion purposes only. Materials, color and furniture will continue to be explored

Agenda

- 1 Community Engagement & Design Input Process
- 2 Facility Design Presentation
- 3 Work Sessions at Focus Areas
- 4 Community Feedback Exercise
- 5 Share Out from Work Sessions
- 6 Closing

Work Session

Focus Areas - (3 x 15 minutes) = 45 min.

1. Interior Public Spaces – Kenneth Drucker
2. Interior Spaces – Jeff Goodale
3. Architecture + Public Realm - Aman Krishan, Autumn Visconti

Share Out from Focus Areas - 15 minutes



NYC Criminal Justice

NYC DDC Department of Design and Construction

Borough-Based Jails | NAC

Thank You



BK

Brooklyn Borough Based Jail