



NYC Criminal Justice

NYC DDC Department of Design and Construction

Borough-Based Jails

# BBJ-BK-DSS Dismantle Construction Impacts Community Meeting

February, 2024



**BK**

Brooklyn Dismantle



Brooklyn

# What we heard

- 1) Concern about ongoing dust, vibration, and noise on site, particularly noise levels during after hours work.
- 2) Request for more clarity on upcoming work activities.
- 3) Request to improve response time for community complaints/inquiries.

# Overview of Dismantle Activities & Progress

Interim sally port & officer booth

Oil Tank Removal

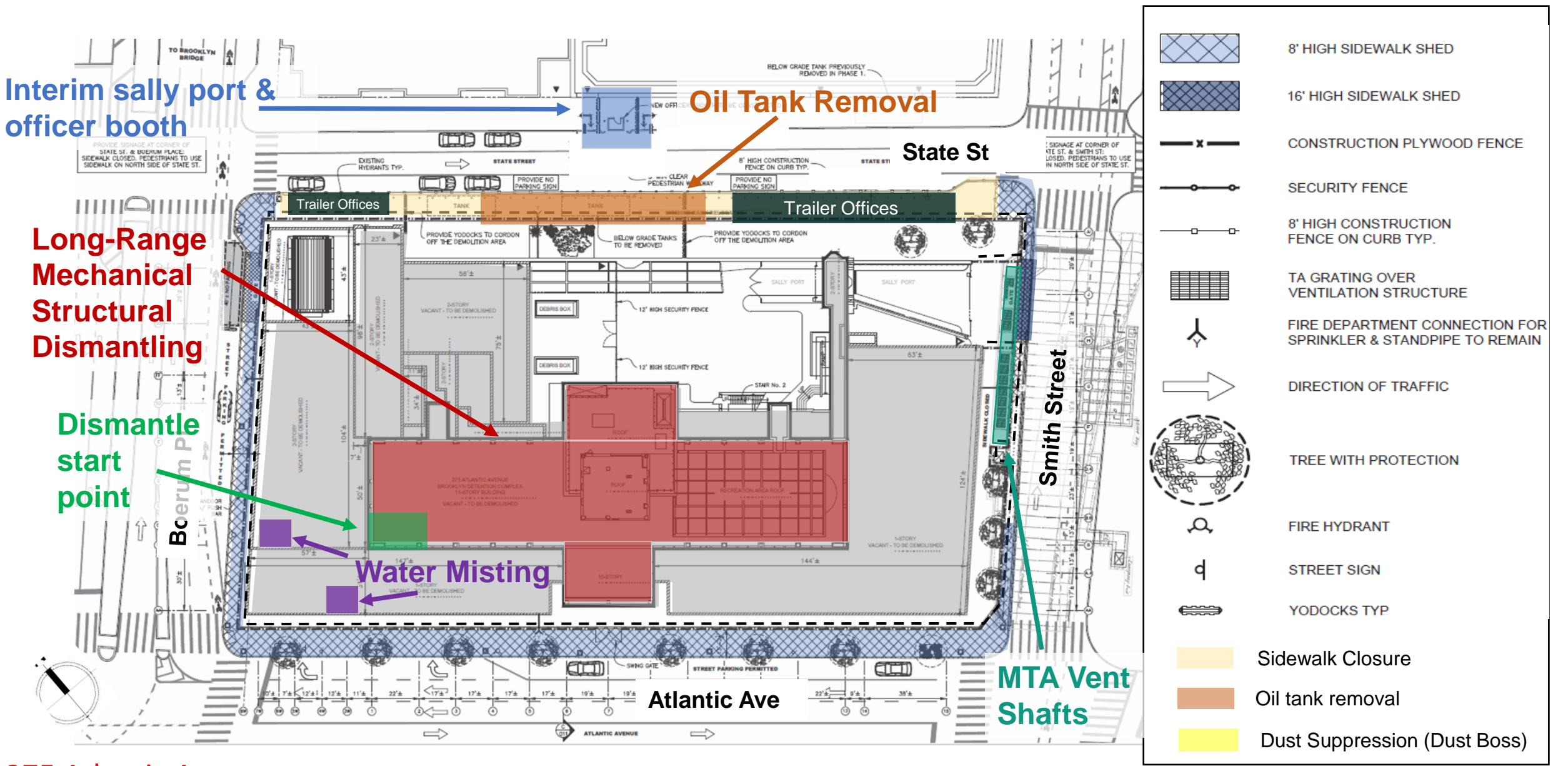
Long-Range Mechanical Structural Dismantling

Dismantle start point

Water Misting

MTA Vent Shafts

275 Atlantic Ave.



# Project Schedule Milestones

Current working hours, in accordance with DOB Permit:

Mon – Fri: (7:00 am – 9:00 pm)

Sat: (9:00 am – 5:00 pm)

\*Site will shut down at 9:00 pm

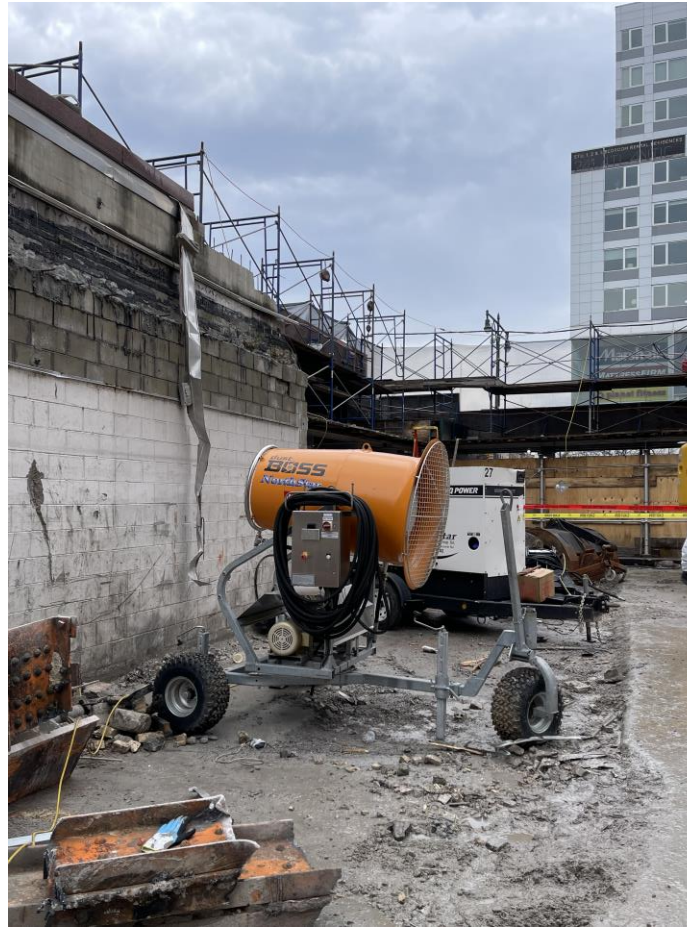
Milestone	Estimated Dates
Courthouse Sally Port and Officer Booth Construction	Complete
Podium Dismantle	Complete
<div><b>Dismantle Work</b><ul style="list-style-type: none"><li>- Excavation of fuel tanks on the south side of State St.</li><li>- Structural dismantling of Brooklyn Detention Center Tower &amp; debris removal</li><li>- Dismantle with long-reach excavator machine<ul style="list-style-type: none"><li>- Jackhammers will be used intermittently and again when the building is down to the slab</li></ul></li><li>- North Yard demo</li><li>- Berm installation</li></ul></div>	<div><b>January 2023– March 2024</b> (DSS Substantial Completion)<ul style="list-style-type: none"><li>- <b>completing 3/4/24</b></li><li>- <b>ongoing</b></li><li>- <b>started 2/28/24</b></li> <li>- <b>starting 3/6/24</b></li><li>- <b>starting 3/6/24</b></li></ul></div>



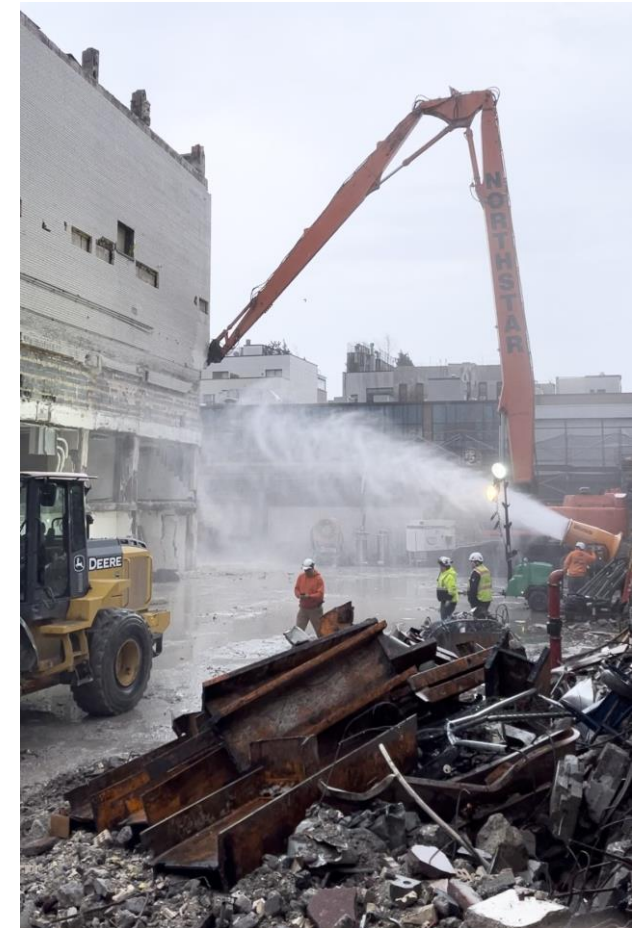
# Site Progress Photos



**Long-Reach Excavator**  
(2/28/24)



**Dust Mitigation (Dust Boss)**  
(2/28/24)



# Environmental Monitoring Plan

The BBJ team will provide quarterly environmental monitoring updates at Community Board and Neighborhood Advisory Committee (NAC) meetings.

The environmental monitoring reports and environmental factsheets are posted on the BBJ website: <https://rikers.cityofnewyork.us/environmental-monitoring-reports/>

## Vibration Monitoring: (PSI Agency, Inc.)

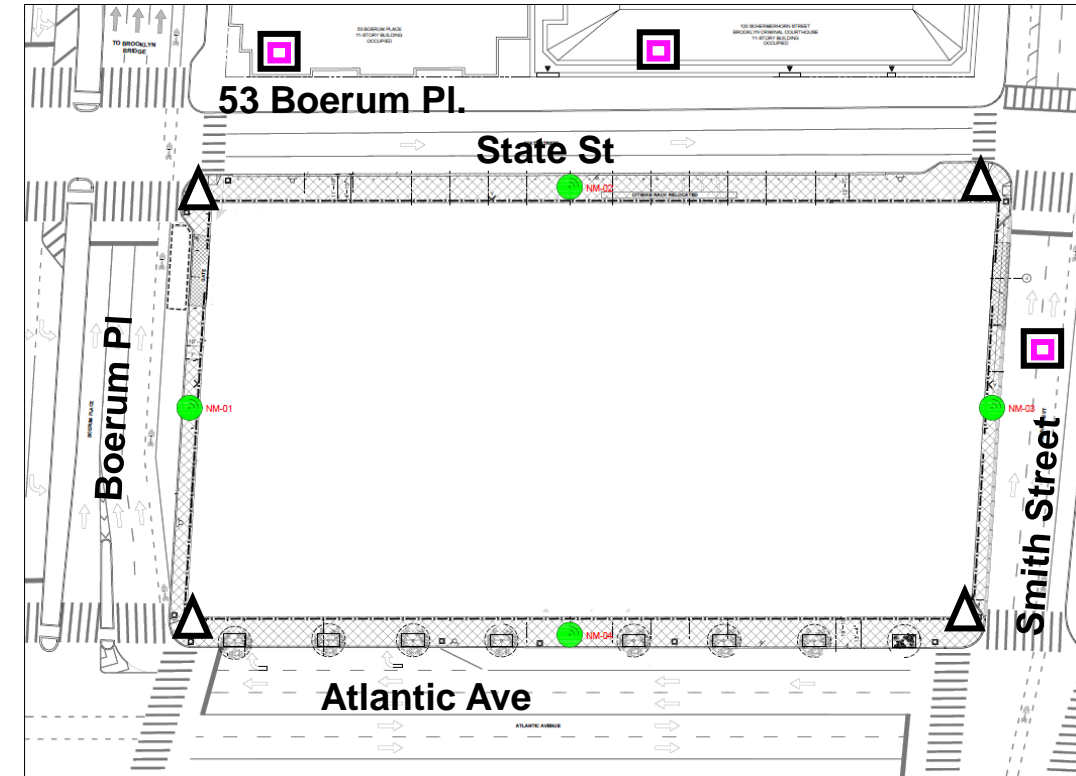
- Monitor 1 is placed within 120 Schermerhorn Street (Court Building).
- Monitors are placed within the F train subway tunnel under Smith Street.
- Baseline data collection was taken in April 2022.
- **An additional monitor was placed at 53 Boerum Pl. on 1/23/2024**

## Noise Monitoring: (PSI Agency, Inc.)

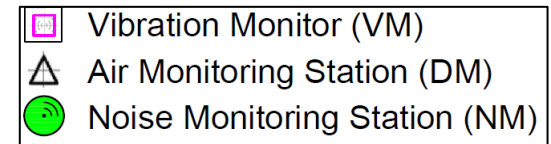
- 4 Monitors are at the sidewalk bridge locations at the center of Smith Street, Atlantic Avenue, Boerum Place, and State Street.
- Noise monitoring is being performed on a continuous basis.

## Air Quality Monitoring: (PSI Agency, Inc.)

- 4 particulate monitoring stations are at each corner of the site. Particulate monitoring is performed daily at 15-minute intervals.
- The Action Level is set below the Permissible Exposure Levels (PEL) .  
When Action Levels are reached, the construction activities are assessed, and the contractor immediately acts to apply steps to control dust and emissions before the PEL is reached.
- The BBJ Construction Management Team, Project Contractors and Environmental Specialists receive real time alerts when Particulate Matter (PM), decibels (dBa), or velocity of vibration (ips) number approach and Action Level.



Vibration, Air and Noise monitoring devices installed by Design-Build team.



# Environmental Monitoring Updates



## Air Quality Monitoring

In January, construction-related levels of Particulate Matter (PM) PM10 did not surpass Daily Permissible Exposure Limits (PEL) as set by federal standards for the 24-hour Time Weighted Average (TWA), or daily value, and did not cause air quality concerns to the public or on-site workers.



## Noise Monitoring

In January construction-related levels of noise did not surpass the limits of Local Law 113 and did not cause noise concerns for the community. No corrective actions or mitigation measures were required.



## Vibration Monitoring

In January, alerts on 6 days recorded by the vibration monitoring occurred during non-working hours or were assessed and determined to be caused by sources other than the construction work. The Central Court Building monitor was relocated to a more stable position within the courthouse as the corrective action due to its original placement in a heavy foot traffic location which caused vibration exceedances. No further corrective actions or mitigation measures were required as the alerts were triggered due to manual disturbance of the sensor during off hours as well as during work hours.

# Addressing Dust Concerns

- 1. Dust:** Dust due to dismantle activities on-site contains non-hazardous dirt and concrete/block/brick particles. No immediate or latent hazards are associated with this dust.
  - Some structural elements have lead paint, but it mostly remains attached to surfaces and is not separately airborne, posing no discernible hazard.
- 2. Hazardous Materials:** Any hazardous materials (e.g., PCBs, old paint, oil) were removed before demolition. Universal wastes were properly disposed of.
- 3. Supervision:** The site has been closely supervised by regulatory agencies (DEP, DOB, OCS, OSHA) without raising airborne particulate concerns.
- 4. Asbestos Removal:** Rigorous control measures are in place during asbestos removal, preventing the escape of friable material.
- 5. Tyvek-Suited Individuals:** These individuals are part of the asbestos removal teams, following strict safety protocols. Tyvek suits are not worn or necessary for regular construction debris removal.
- 6. Dust Control:** Debris is hosed down to control dust. Water is applied to debris within the chute and may not always be visible from outside the site. Additionally, dust monitors with sensing radii of 200' adequately cover the site perimeter (Monitors are located at each corner of the site. Two monitors along State or Atlantic cover a total length of 400', with a maximum block length of 330')





NYC Criminal Justice

NYC DDC Department of Design and Construction

# Thank you!



**BK** Brooklyn Dismantle



# APPENDIX

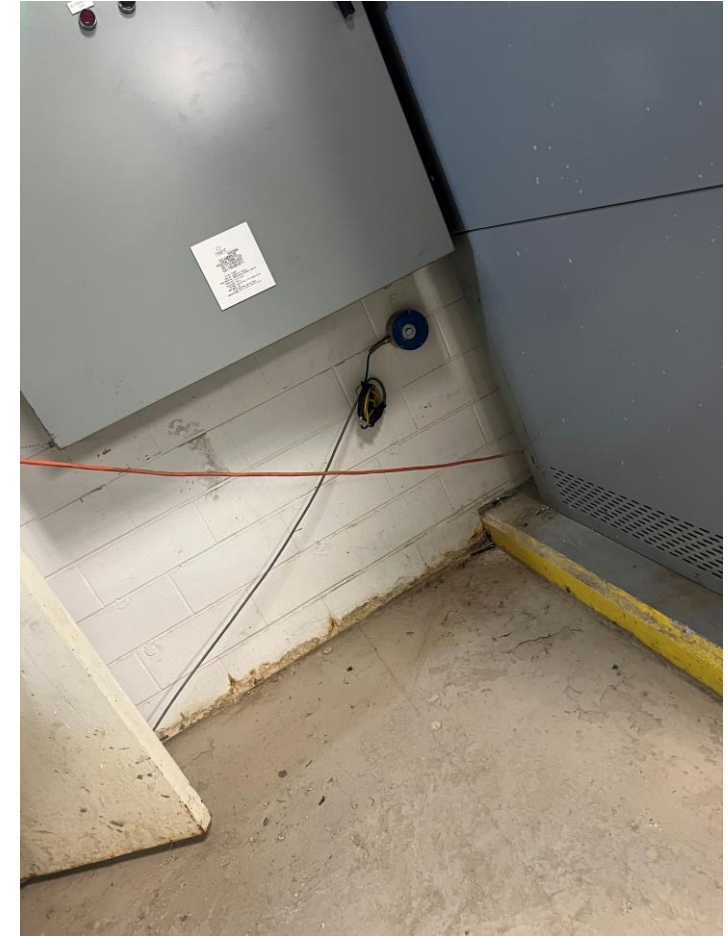
# Courthouse Vibration Monitor Relocation



Former location inside shaft  
(1/13/24)



Metal plate covering shaft  
(1/13/24)



Relocated monitor in mechanical room  
(1/15/24)