



NYC Criminal Justice

NYC DDC Department of Design and Construction

Borough-Based Jails

COMMUNITY DESIGN INPUT WORKSHOP FOR THE BROOKLYN FACILITY

October 02, 2023



BK Brooklyn Borough Based Jail

Agenda

- 1 Community Engagement & Design Input Process
- 2 Justice & Equity in Design
- 3 Public Realm
- 4 Massing & Exterior Design
- 5 Interior Public Spaces
- 6 Interior Spaces
- 7 Work Sessions at Four Focus Areas
- 8 Share Out from Work Sessions
- 9 Closing

Brooklyn

Community Engagement & Design Input Process

Brooklyn Facility Design Engagement Process

*Presentation materials and video recordings of the 7/27 meeting and 9/7 workshop are available on the BBJ website: www.rikers.cityofnewyork.us

A) (Past Event) Community introductory meeting for the Brooklyn Facility

- **Date:** July 27, 2023
- **Purpose:** Introduce the selected Design-Build team, review previous community design input, and share the upcoming community design input plan.



B) Two community design workshops and one Community Board 2 presentation

- **Dates:**
 - **Workshop I - September 7, 2023** (+ online feedback period 9/8-9/20)
 - **Workshop II - October 2, 2023** (+ online feedback period 10/3-10/10)
 - **Community Board 2 Land Use Committee - October 18, 2023**
- **Purpose:** Receive and incorporate community input before PDC Conceptual Review



C) One community design workshop and one Community Board 2 presentation

- **Estimated Date:** Winter 2024
- **Purpose:** Receive and incorporate community input before PDC Preliminary Review



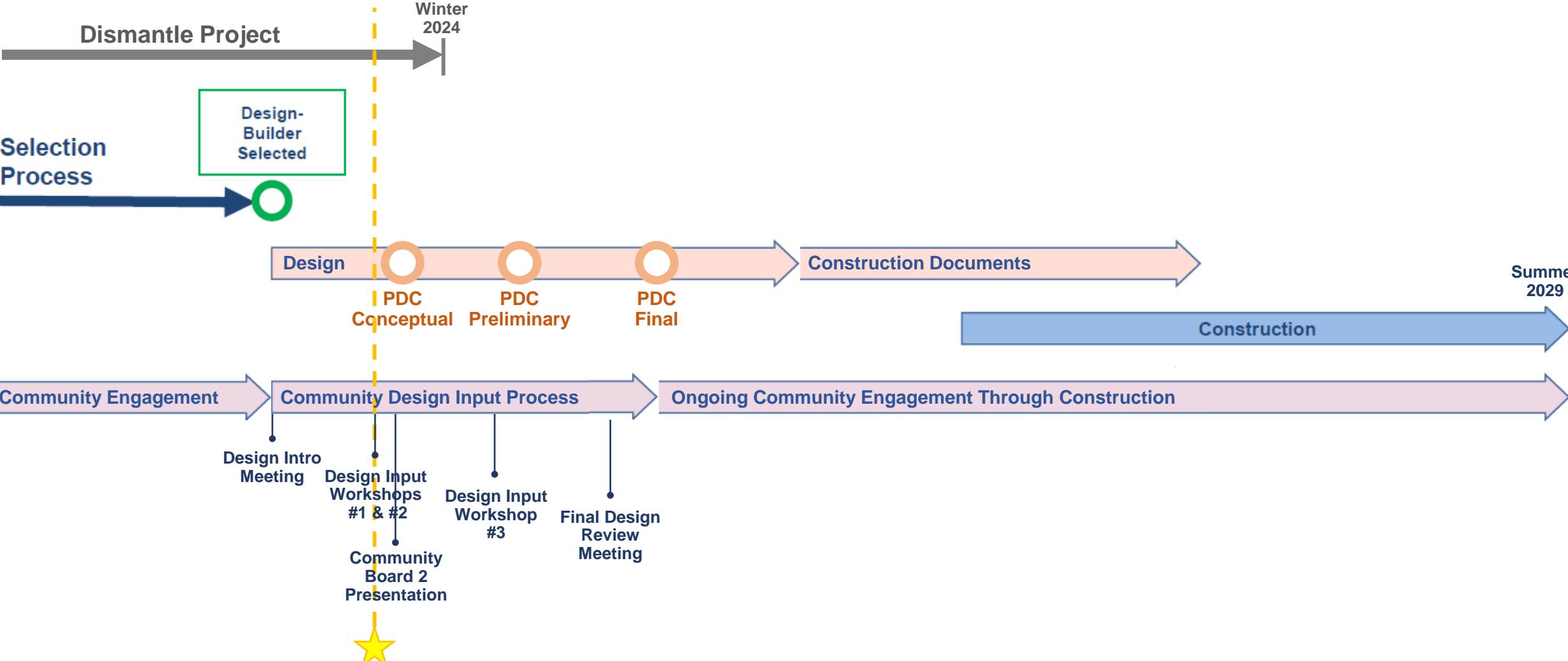
D) One additional community presentation

- **Estimated Date:** Spring 2024
- **Purpose:** To report back before PDC Final Review to show how community feedback was incorporated



The community engagement schedule will be developed in coordination with Percent for Art timeline/inclusion and Public Design Commission (PDC) timeline

BBJ Design-Build & Engagement Process



Community Resources During Construction



BBJ Website

<https://rikers.cityofnewyork.us/>



Designated Phone Number



Weekly Look Ahead



72-Hour Advisories for Impactful Construction Activities



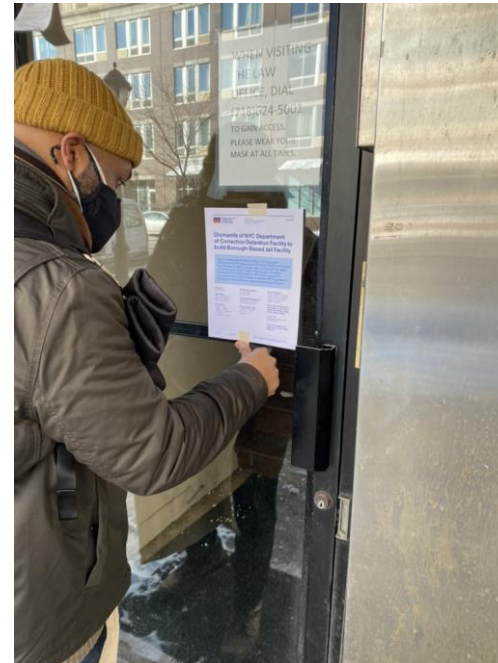
Community Construction
Liaison & Field Office

Lucien Allen Brooklyn BBJ CCL

(917) 270-2370 / BrooklynCCL@bbjnyc.com

360 Atlantic Avenue

Monday – Friday 7:00am - 3:30pm



An aerial photograph of a dense city skyline, likely New York City, with a river or harbor in the background. The image is overlaid with a semi-transparent dark blue filter. The text is centered and arranged in a list-like format.

GUIDING PRINCIPLES

FOCUS ON DIGNITY AND RESPECT

ENSURE SAFETY AND SECURITY

CONNECT WITH COMMUNITY AND FAMILIES

CREATE A CIVIC ASSET

ACHIEVE EXCEPTIONAL DESIGN

PRIORITIZE ENVIRONMENTAL STEWARDSHIP

FOCUS ON DAYLIGHT & WELLBEING

ENSURE CONSTRUCTIBILITY

ACHIEVE ECONOMICAL DESIGN

OPTIMIZE BUILDING PERFORMANCE

Brooklyn

Justice & Equity in Design

DESIGNING FOR EQUITY

DESIGN BUILDINGS AND SPACES WHERE ALL HUMAN NEEDS ARE MET IN AN EQUITABLE AND SUSTAINABLE MANNER.

FOSTER COMMUNITIES WHERE ALL PEOPLE HAVE EQUAL ACCESS TO SHELTER, HEALTH AND NATURE.

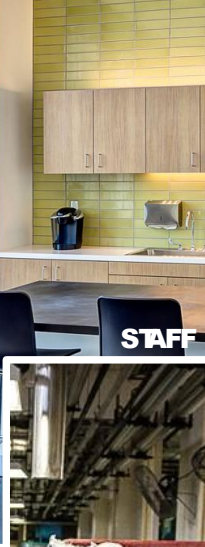
DESIGN SPACES THAT ENRICH AND INSPIRE ALL PEOPLE.



PERSONS IN CUSTODY



STAFF



HEALTH SERVICES



WAREHOUSE



FOOD SERVICE



BUILDING SUPPORT SERVICE



LAUNDRY



SUPPORT AGENCIES



ADMINISTRATION



VISITORS

DESIGNING FOR WELL-BEING



SAFETY

Throughout the facility, people feel physically and psychologically safe



TRUSTWORTHINESS + TRANSPARENCY

Decisions are made with transparency and with the goal of building and maintaining trust



PEER SUPPORT

Individuals with shared experiences are integrated into the organization and viewed as integral to service delivery



COLLABORATION

Participants work together to make determinations on programs, schedule and activities that affect people in the space



EMPOWERMENT

People's strengths are recognized, built on, and validated – this includes a belief in resilience and the ability to heal from trauma



RESPONSIVENESS

Biases and stereotypes (e.g., based on race, ethnicity, sexual orientation, age, geography) and historical trauma are recognized and addressed

GUIDING PRINCIPLES

NATURAL LIGHT

CIVIC ASSET

ACCESS TO OUTDOOR

MEDICAL TREATMENT

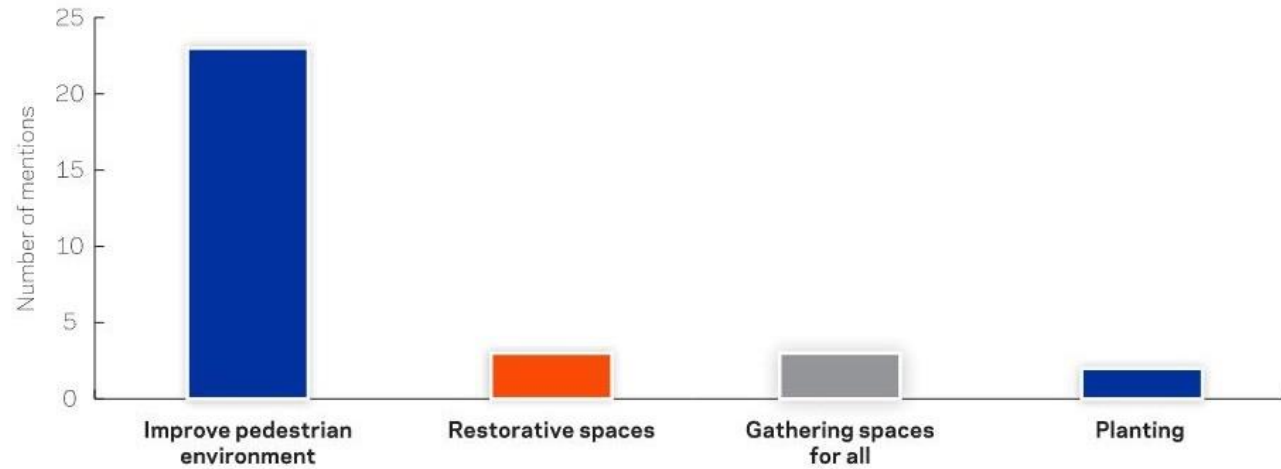
COUNSELING

PROGRAMS & EDUCATION

VARIETY OF MATERIALS, COLORS & TEXTURES

NORMALIZE THE SPACE

FEEDBACK ANALYSIS METHODOLOGY



Boerum Place-Atlantic Avenue crossing needs to be resolved to encourage people to use the plaza.

Walk signals need improving

I always walk down the south side of Atlantic because of traffic - how do you make it more pedestrian-friendly?

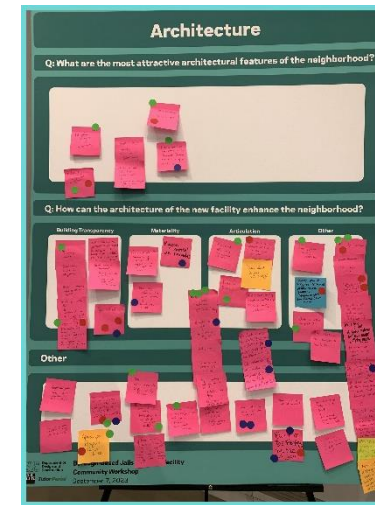
Public spaces should be as joyful as possible, to offer care to the families of those in custody and local residents.

Introduce more public seating for all.

Public spaces shouldn't stigmatize.

What programmes do we add that will really make us, especially our kids, want to use this space?

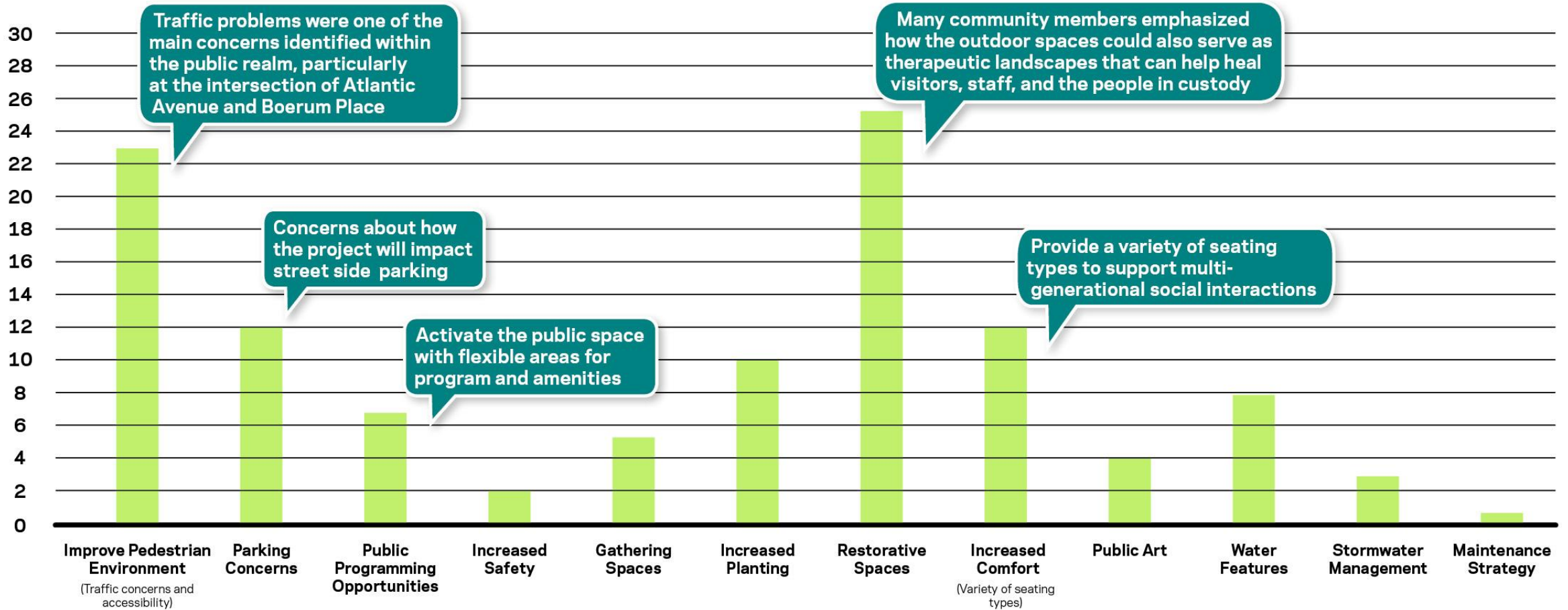
Planting and trees should be maximized while hardscape should be limited.



Brooklyn

Public Realm

WHAT WE HEARD – DESIGNING FOR A NEW PUBLIC REALM



Number of community comments from September 7 Workshop and Online Portal.

WHAT WE HEARD – IMPLEMENTING KEY TAKEAWAYS

- Many ideas were raised about how the **pedestrian environment could be improved and activated.**
- Provide a **variety of seating and program elements** to support **multi-generational social interactions.**
- Many community members emphasized how the **outdoor spaces could also serve as therapeutic landscapes** that can help heal visitors, staff, and the people in custody.

WHAT WE HEARD – STUDYING KEY TAKEAWAYS

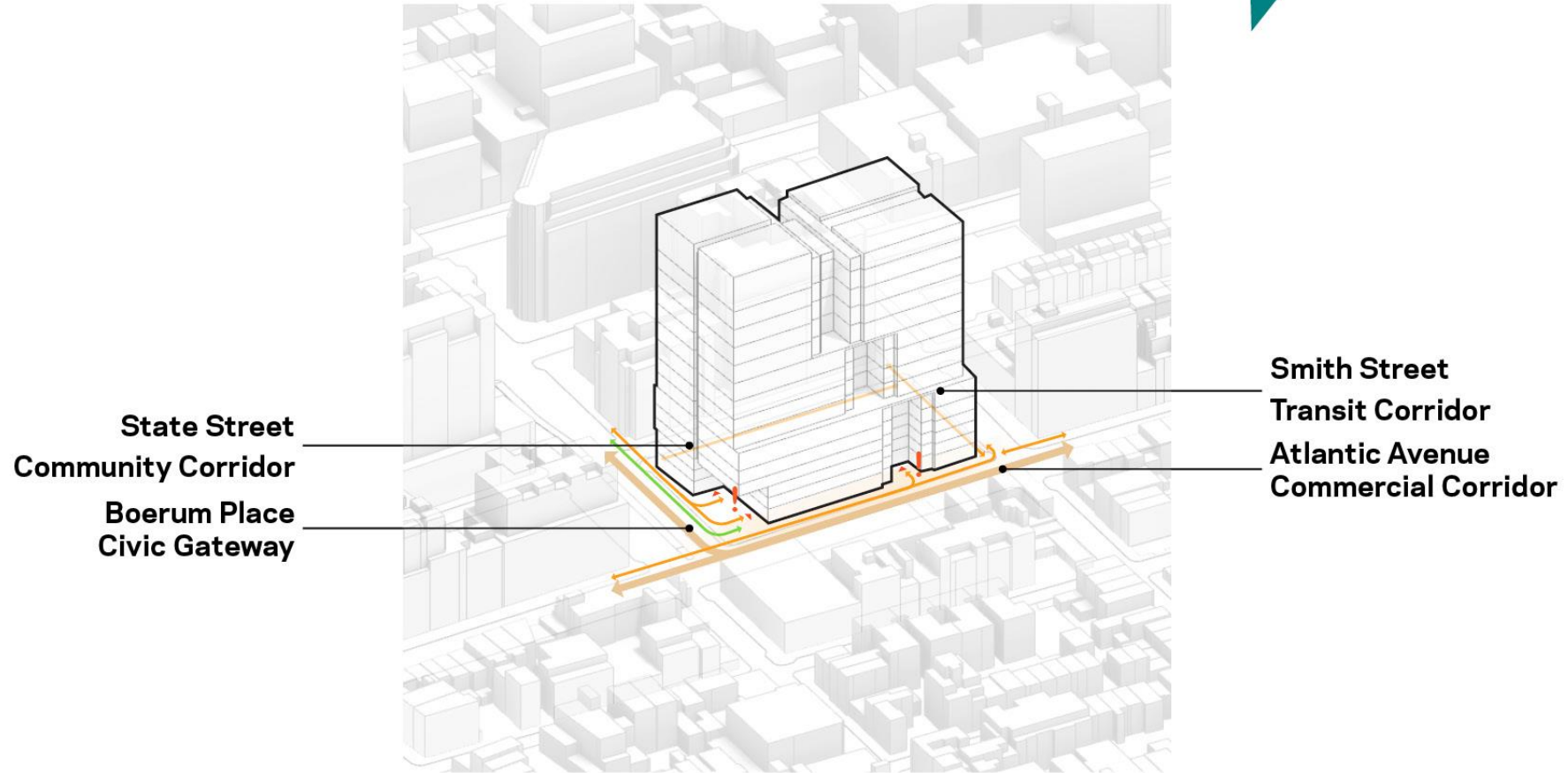
- **Traffic safety concerns** was one of the main problems identified with the existing public realm. This was a particular concern at the intersection of Atlantic Avenue and Boerum Place, where there has been a history of high-speed collisions.
- More clarity was requested regarding the **location of pedestrian and vehicular entrances and exits** - for staff, Department of Correction, and people in custody.
- Many community members emphasized how they would like to **integrate rain gardens, bioswales, and permeable paving systems** that require minimal maintenance.

WHAT WE HEARD – KEY TAKEAWAYS OUTSIDE THE SCOPE OF THE DESIGN PROJECT

- **Expand public space beyond the Brooklyn Facility** block in all directions. Open public space is an important aspect of a healthy and thriving community.
- **Ensure safer pedestrian crossings** along Atlantic Avenue and Boerum Place. We often feel rushed while crossing the street since fast-paced traffic is a problem.

IMPROVE CONNECTIONS

By understanding how pedestrians, cyclists, and commuters engage with the site, we can optimize key areas to suit the needs for the public realm vision



INCREASE MOBILITY AND STREETScape DIVERSITY

By understanding the metrics of our streets, we can create a hierarchy that supports current and future mobility needs around the site

Neighborhood Corridor

Streets have small groups of people passing each other, has consistent pedestrian destinations such as business districts, large schools, and parks.

Community Connector

Streets have individuals passing one another or small groups along residential streets including park and school destinations.



Regional Corridors

Streets have larger crowds of people with large scale attractions drawing people from around the region.

ENHANCE CIVIC EXPERIENCE

The streetscape and public realm utilize future-forward approaches in details and design that corresponds with the greater New York vision of creating a welcoming urban experience for all New Yorkers

Prioritize native plantings, permeable paving, accessible pedestrian paths, and public open space that improves climate resilience and ecological health.

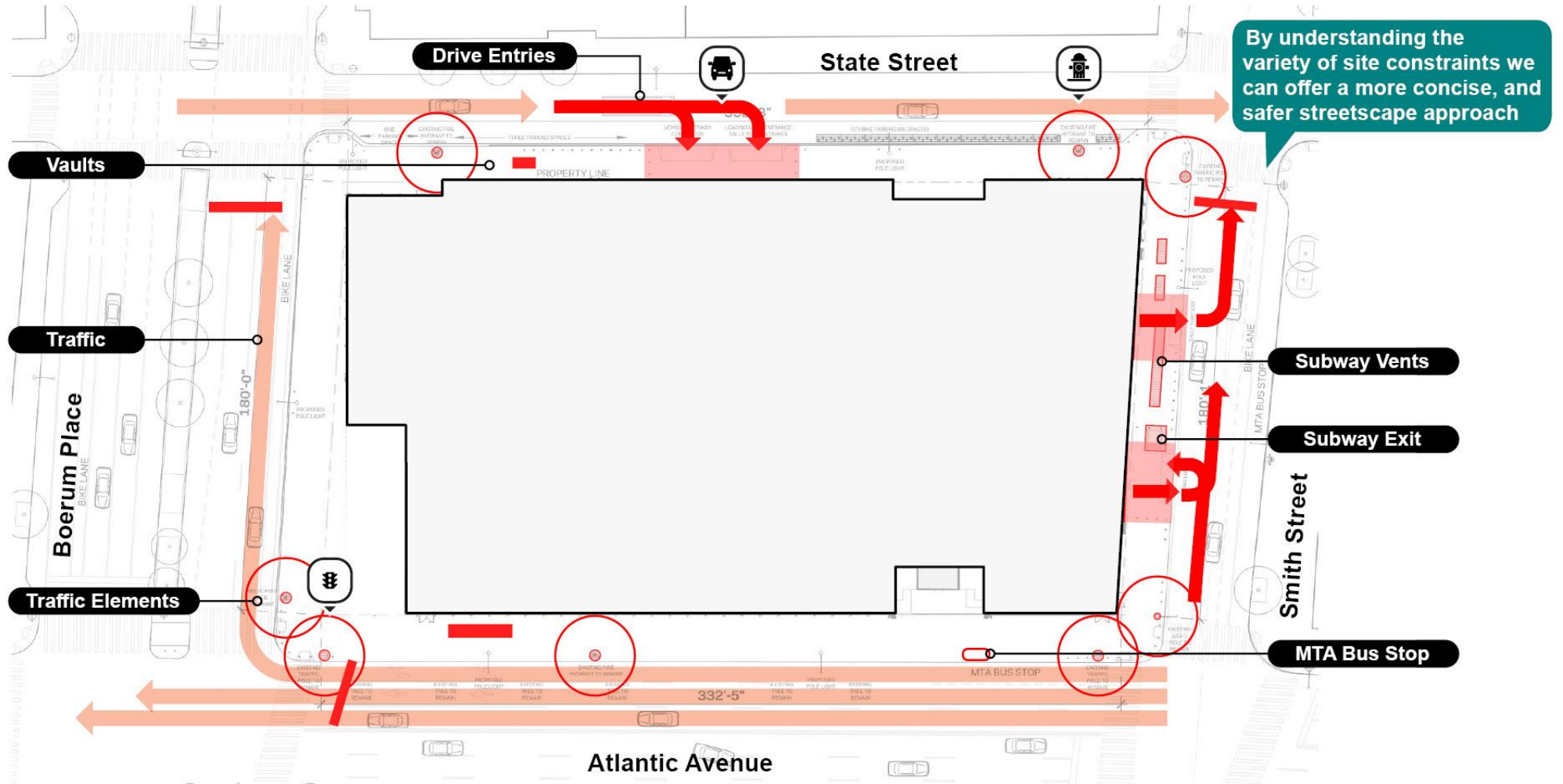


CREATE A COMMUNITY CORNERSTONE

An inviting streetscape will enhance the public realm around the site and act as a cornerstone connecting users to Downtown Brooklyn and its surrounding communities

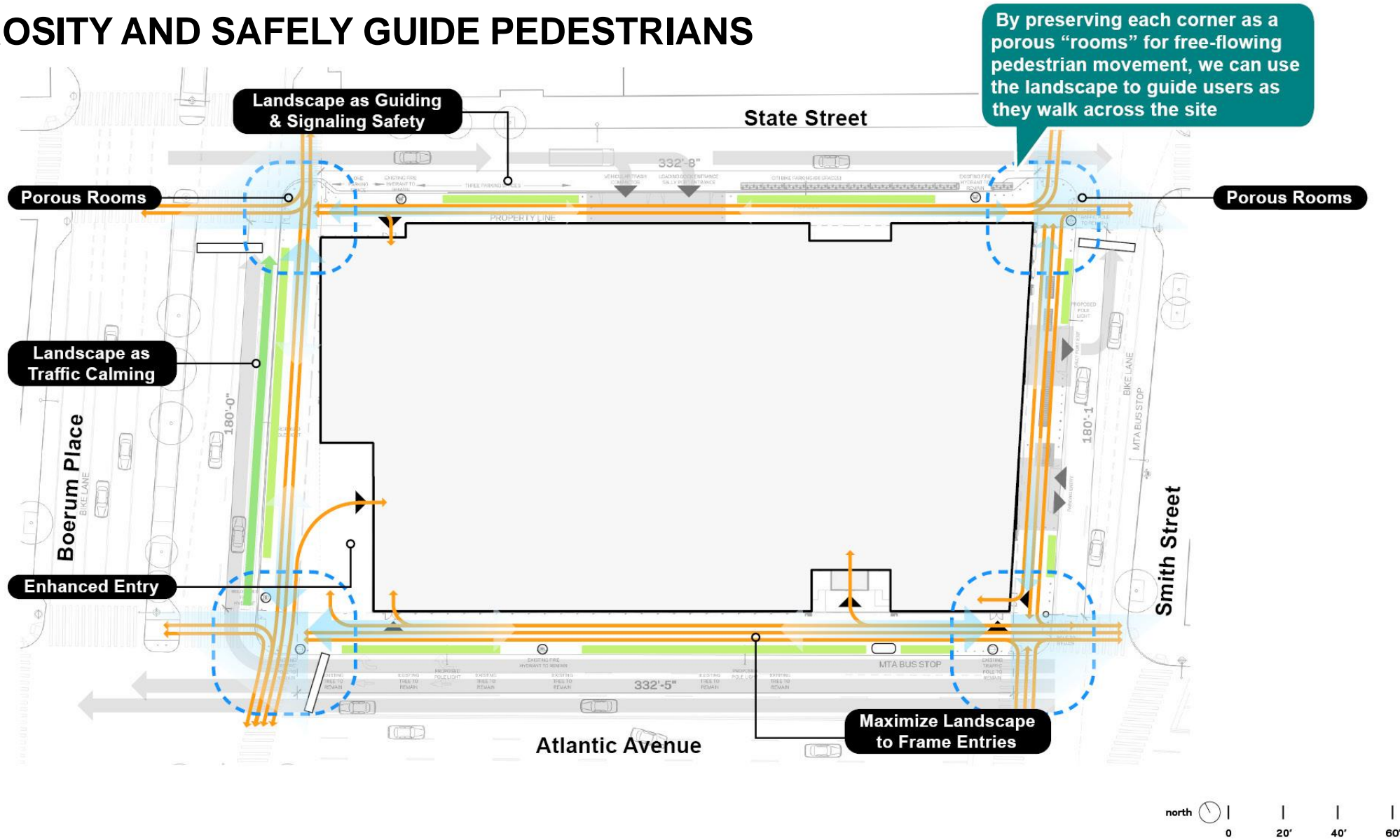


UNDERSTANDING SITE CHALLENGES



Preliminary illustration for discussion purposes only.

EXPAND POROSITY AND SAFELY GUIDE PEDESTRIANS



DESIGN FOR A NEW PUBLIC REALM

Design Updates

Activate pedestrian environment with wider sidewalks and areas for flexible furnishing use.

Support multi-generational interactions.

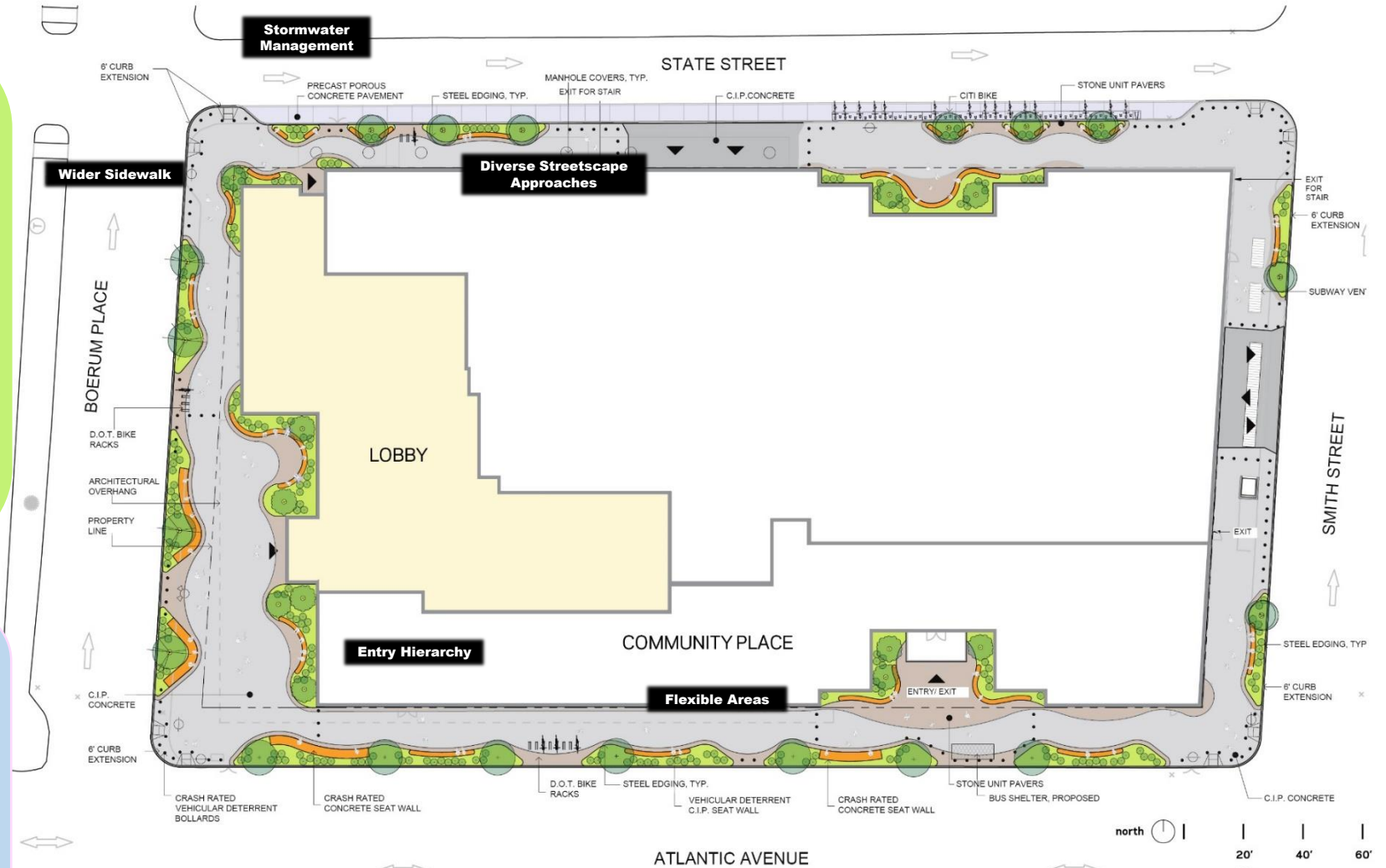
Create diverse streetscape design approaches for each street.

Create a hierarchy in design for each entrance.

Design Studies

Incorporate traffic calming measures within the streetscape.

Integrate stormwater management where possible.



STREETSCAPE TOOLKIT



K-12 Security
Bollards



Crash Rated
Street Furnishing



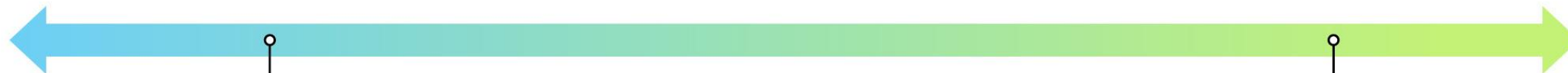
Crash Rated
Sculptural Elements



Crash Rated
Bike Racks



Crash Rated Concrete
Seatwall with Planter



Porous Rooms

Guiding Elements

DOWNTOWN BROOKLYN STREET TREES

We're exploring how to create a continuous urban public realm experience by embracing the Downtown Brooklyn street tree bed and landscape design



Fulton Street



Hoyt Street

DESIGN FOR A NEW PUBLIC REALM – BOERUM PLACE

Design Update

Wider sidewalks and increased social gathering areas with diversified seating.



DESIGN FOR A NEW PUBLIC REALM – ATLANTIC AVENUE

Design Update

Create diverse approaches for each street with traffic calming measures.



DESIGN FOR A NEW PUBLIC REALM – STATE STREET

Design Update

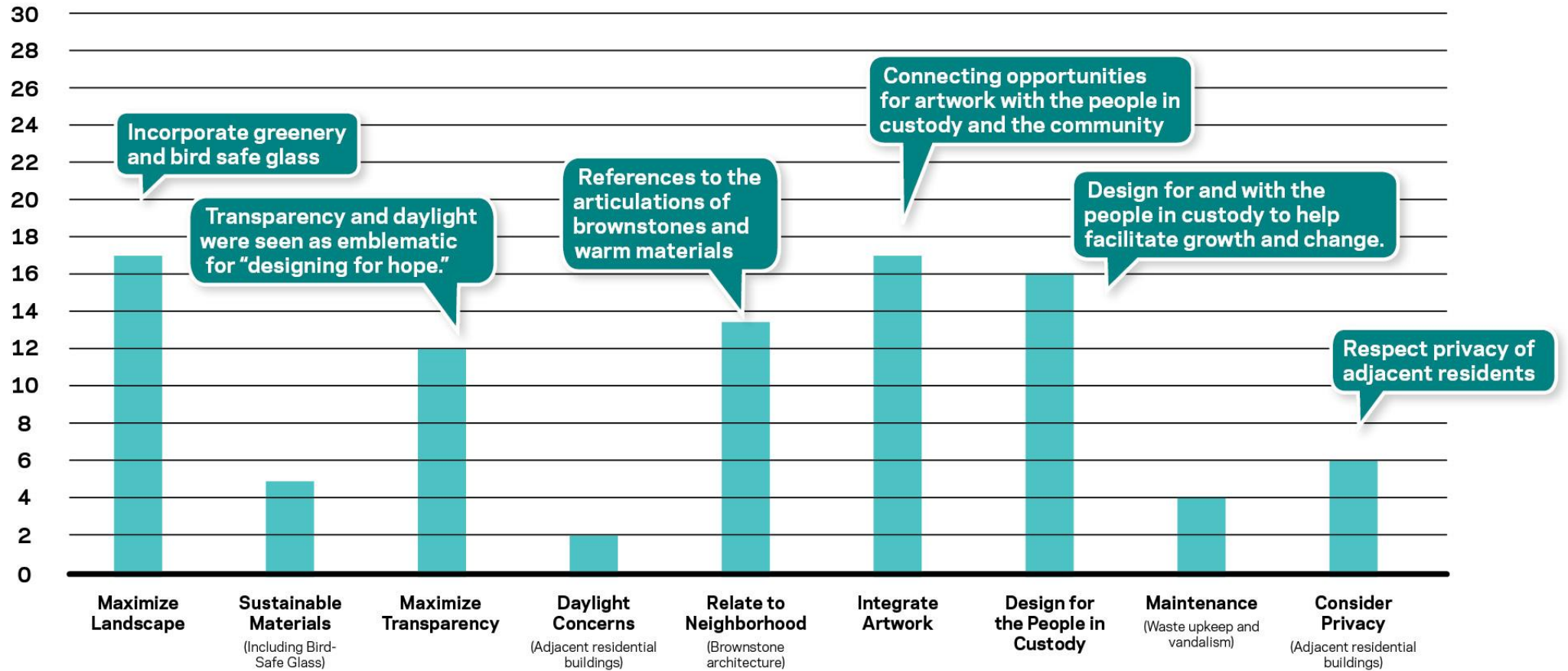
Create a hierarchy in design for each entrance.



Brooklyn

Massing & Exterior Design

WHAT WE HEARD – ARCHITECTURE



Number of community comments from September 7 Workshop and Online Portal.

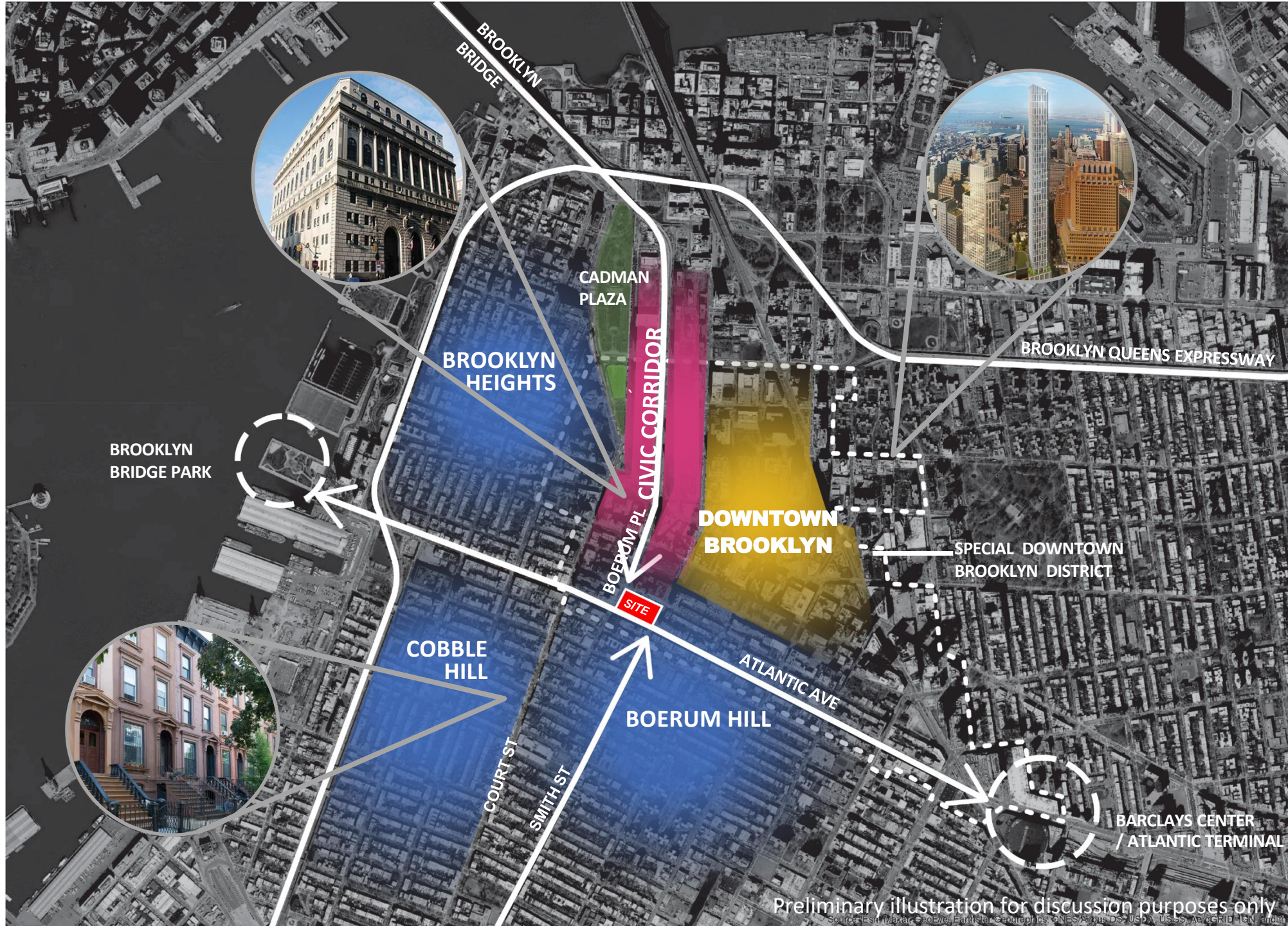
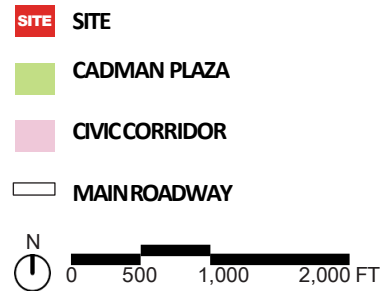
WHAT WE HEARD – IMPLEMENTING KEY TAKEAWAYS

- There was enthusiasm for the **“sculpted by light”** concept presented by the design team. Transparency and daylight were seen as emblematic of “designing for hope”.
- In terms of the existing context, **brownstones** were seen as the most attractive architectural feature of the neighborhood. References to articulations of brownstones and warm materials was encouraged.
- Although there was general enthusiasm for greater use of transparent materials for the jail, there were concerns raised that the **privacy of neighboring residents** should also be respected.
- **Design for and with people in custody in mind:** there was a strong desire to see a more forward-thinking jail facility - one that facilitates growth and change, rather than focusing solely on punitive measures.

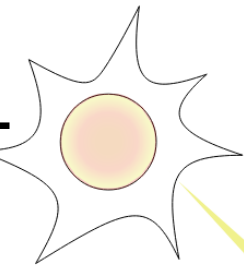
WHAT WE HEARD – STUDYING KEY TAKEAWAYS

- **The use of artwork** in the design was seen as very positive; as a way of getting both people in custody and the local community (particularly young people) a more hands-on role in the design of the facility.
- **Incorporating greenery and bird safe glass** was a very popular idea among the community. This included both for aesthetic/visual purposes, as well as for horticultural activities for people in custody.

INTERSECTION OF THREE IDENTITIES

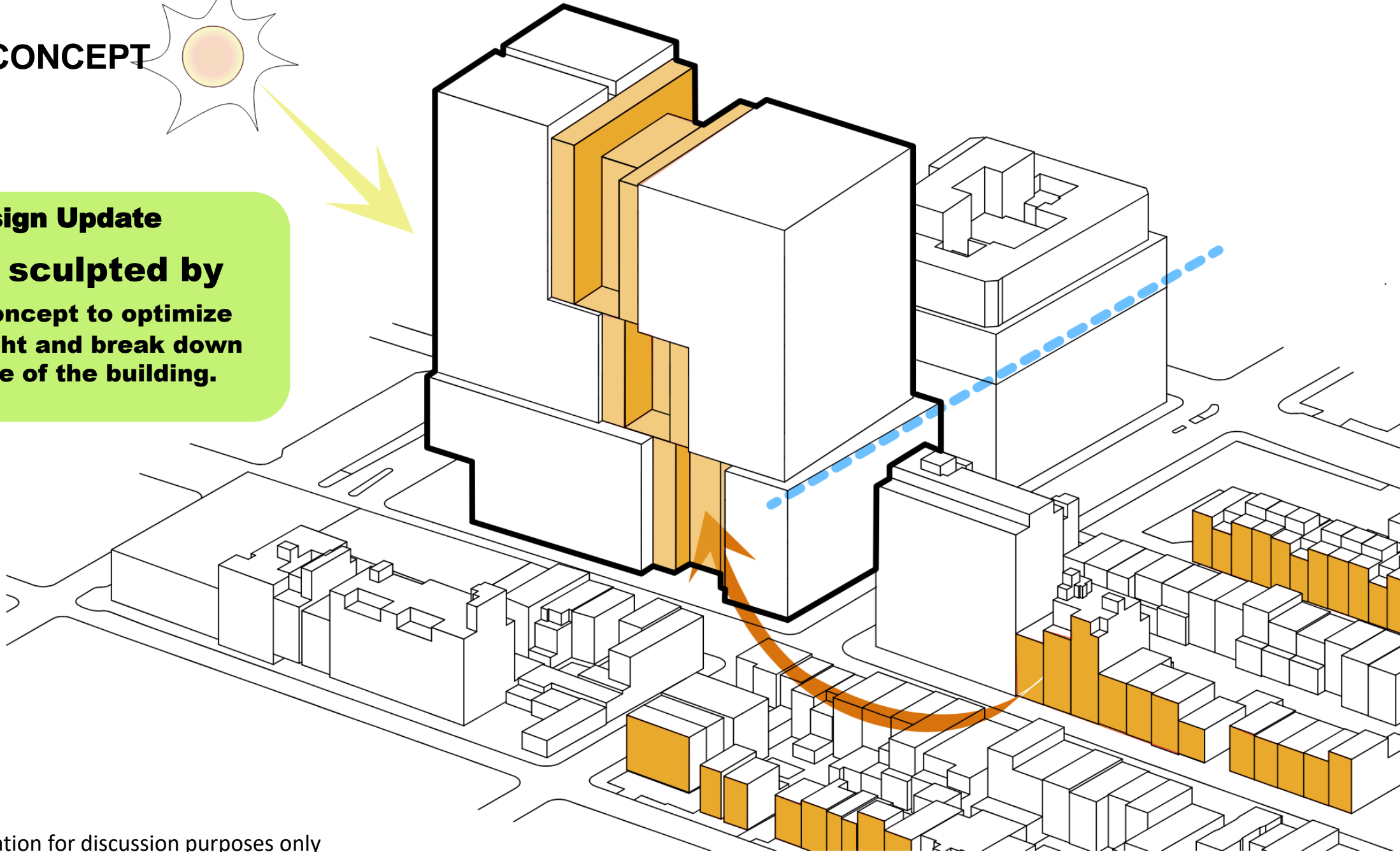


MASSING CONCEPT



Design Update

Maintain **sculpted by light** concept to optimize natural light and break down the scale of the building.





FAÇADE DESIGN

LIGHT



**HIGH
PERFORMANCE**



**NEIGHBORHOOD
CONNECTION**

Image for reference only

TYPICAL FAÇADE DESIGN

CIVIC SCALE

KINGS COUNTY CRIMINAL COURTHOUSE



BOROUGH HALL



Image for reference only

TYPICAL FAÇADE DESIGN

NEIGHBORHOOD SCALE

VIEW OF BROOKLYN BROWNSTONES



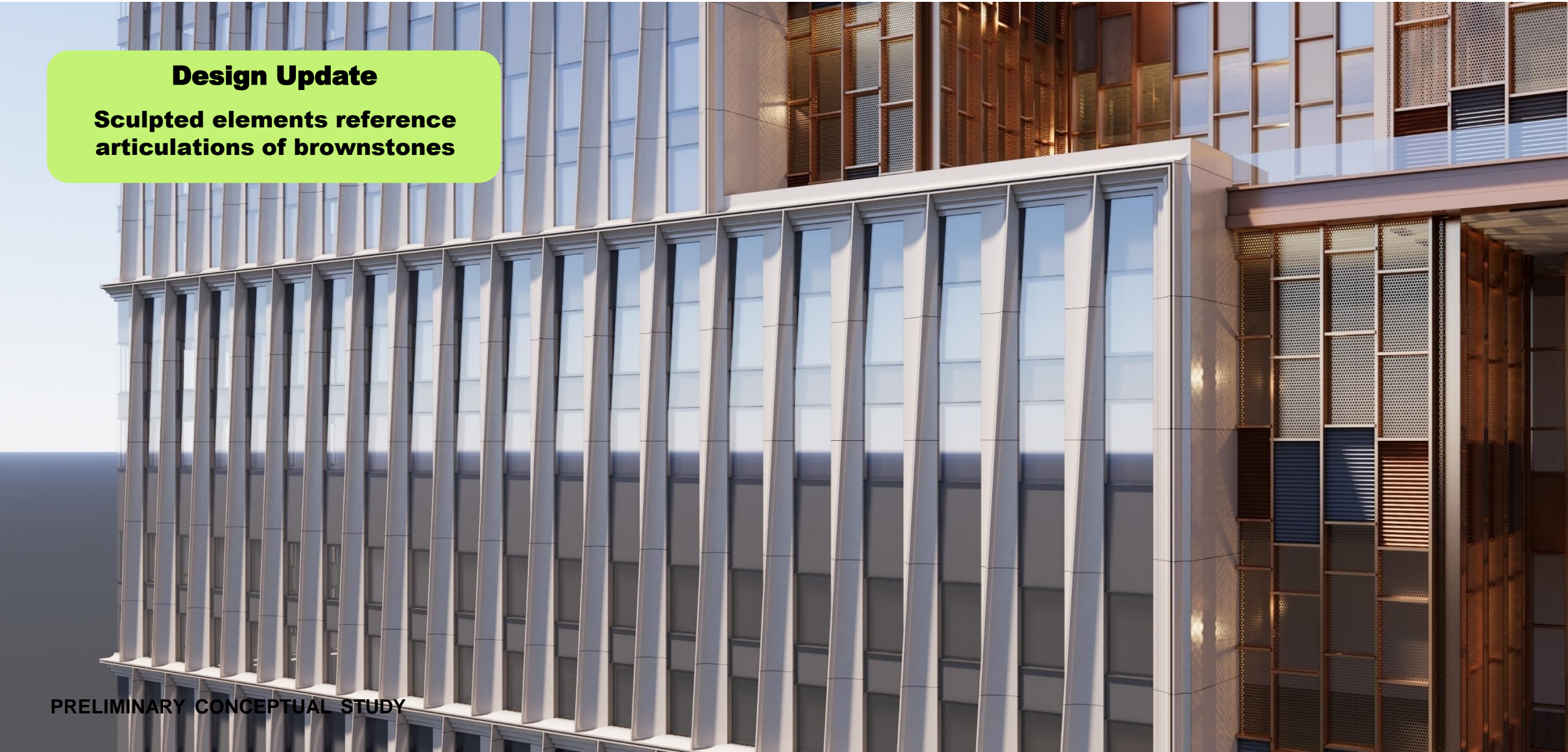
Image for reference only

TYPICAL FAÇADE INITIAL DESIGN STUDY

Design Update

Sculpted elements reference articulations of brownstones

PRELIMINARY CONCEPTUAL STUDY

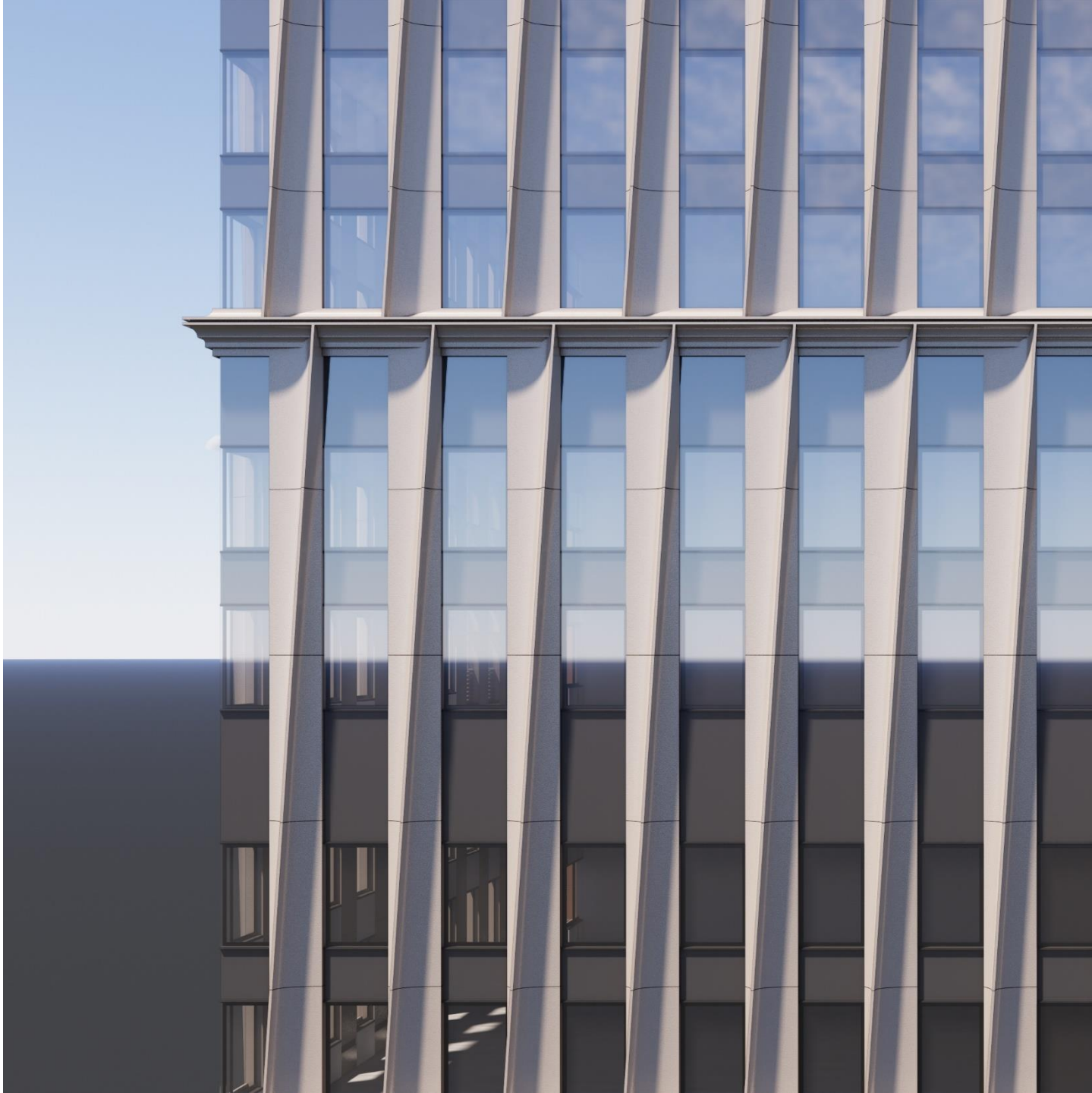


TYPICAL FAÇADE INITIAL DESIGN STUDY – TYPICAL FACADE

Design Updates

Bird Safe Glass will be specified.

Low reflectivity glass will be prioritized, depth of vertical piers and horizontal elements reduce glare and reflectivity of glass.



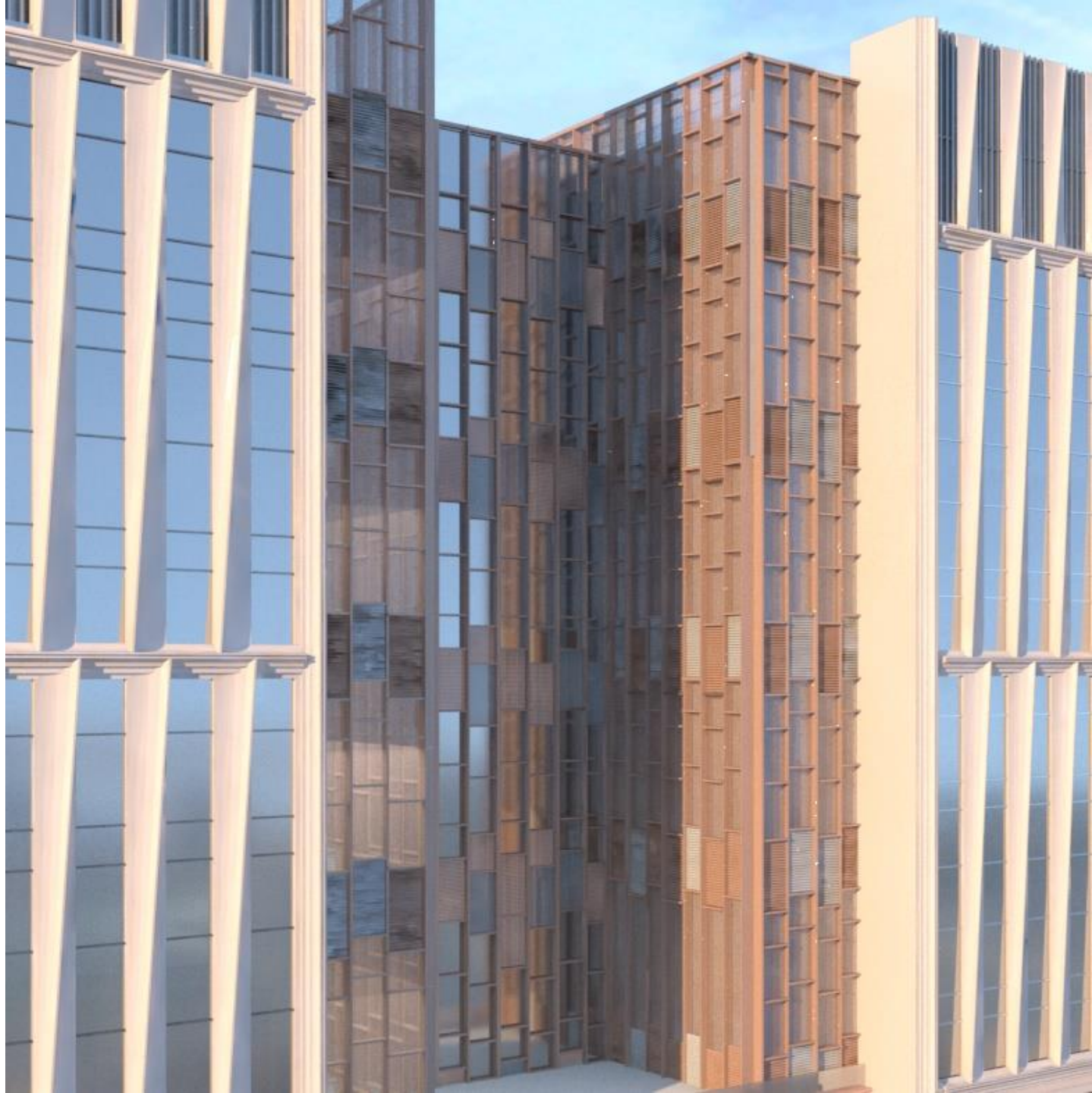
TYPICAL FAÇADE INITIAL DESIGN STUDY – RECREATION YARDS

Design Updates

Location of recreational yards minimizes adjacency with surrounding residential.

Incorporation of screening minimizes sightlines and acoustic.

A horticulture program is included, and greenery is incorporated within.



ATLANTIC AVENUE EXPERIENCE

Design Update

Public Realm landscape and greenery is optimized.



BOERUM PLACE EXPERIENCE



BROOKLYN FACILITY



SMITH STREET EXPERIENCE

Design Update

Corner of Atlantic Avenue and Smith Street is identified as potential location of art for the Percent for Art Program.



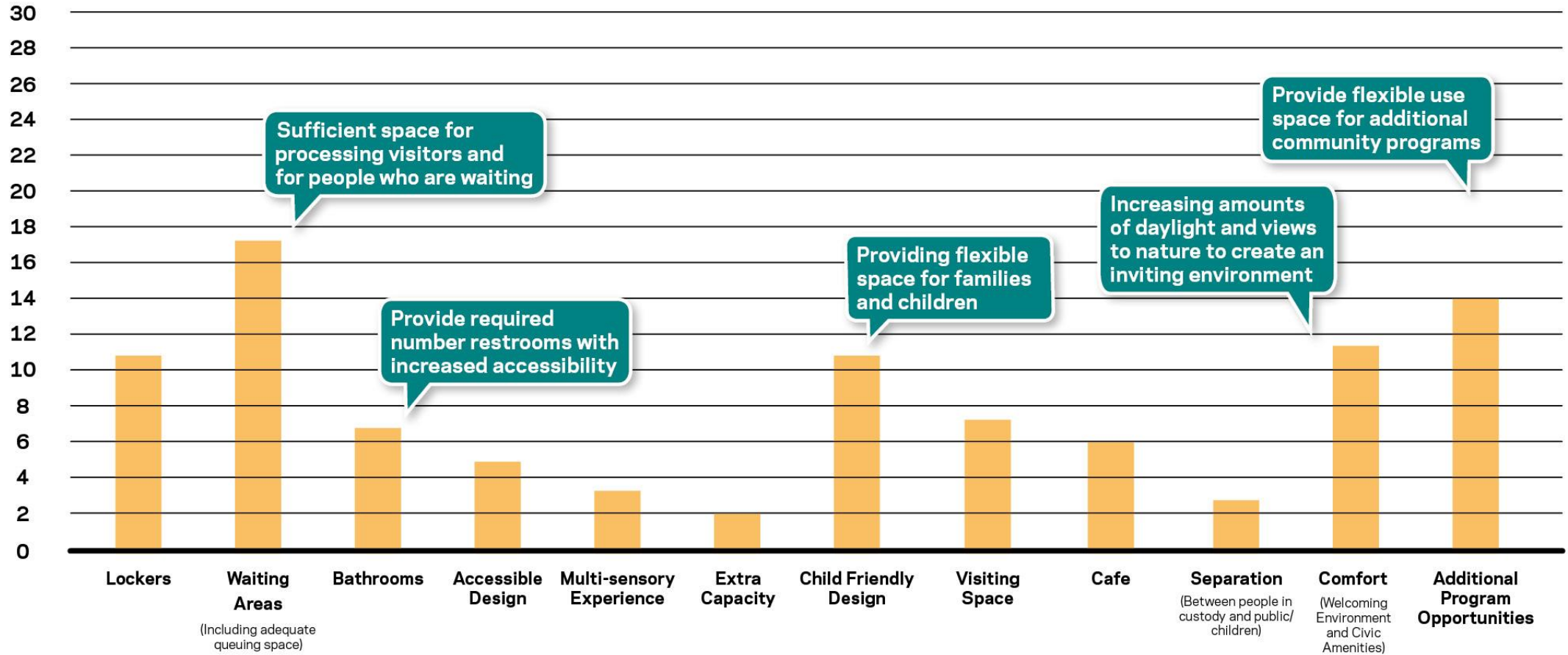
STATE STREET EXPERIENCE



Brooklyn

Interior Public Spaces

WHAT WE HEARD – INTERIOR PUBLIC SPACE



Number of community comments from September 7 Workshop and Online Portal.

WHAT WE HEARD – IMPLEMENTING KEY TAKEAWAYS

- **The security area should also be large enough to process visitors** and get them into the lobby safely and securely.
- **Provide daylight and views to the outdoors in public lobby.** To create a **warmer, more inviting environment**, there was a preference for natural materials and varied ceiling heights (rather than only providing double height spaces).
- Additional concerns included providing an adequate number of **lockers, restrooms and accessible design.**

WHAT WE HEARD – STUDYING KEY TAKEAWAYS

- Providing adequate space for **families and children** was a concern for the community. This was to ensure that visitors would not need to wait outside and to resolve the long lines currently faced by visitors.
- Provide flexible space for additional community programs.

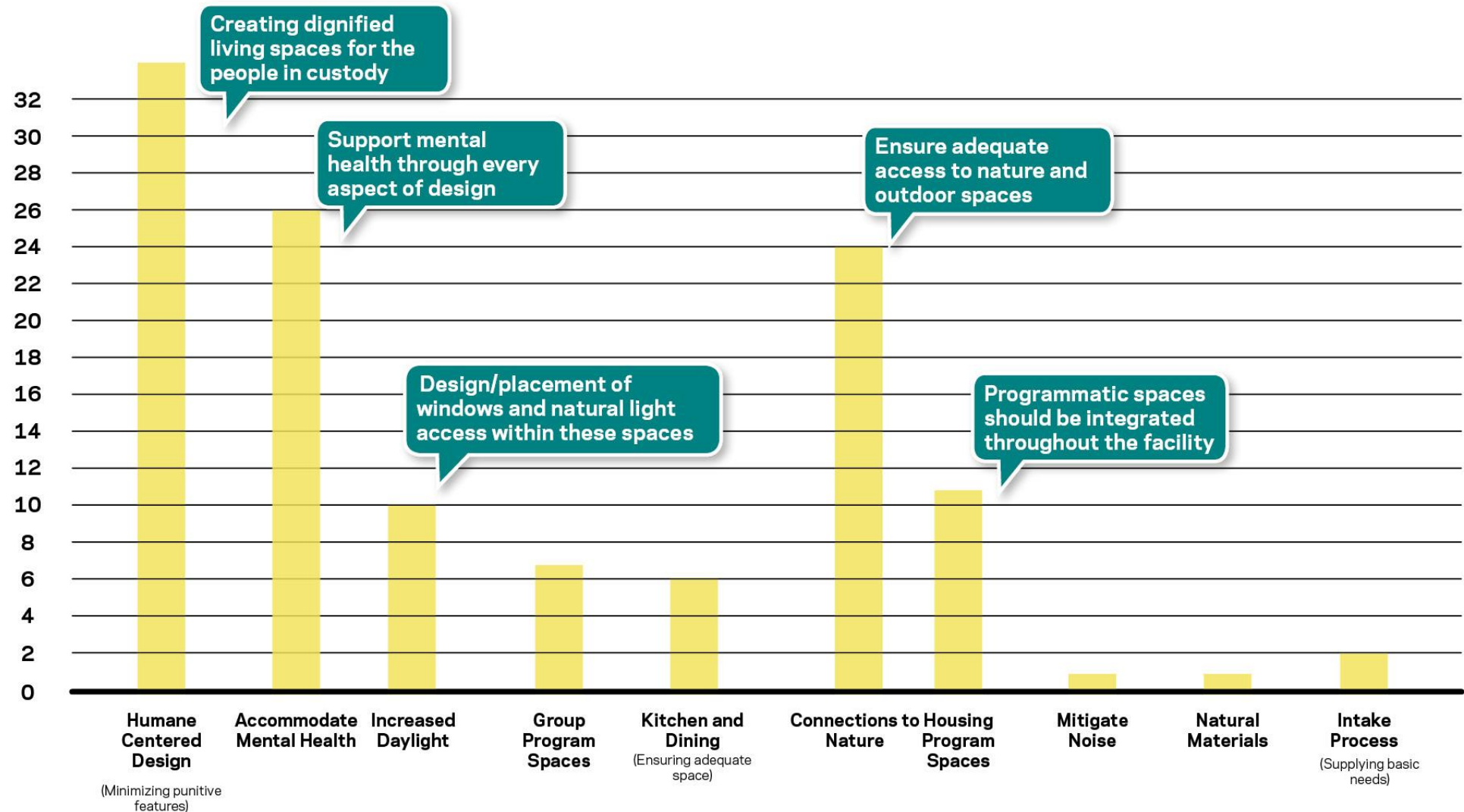
INTERIOR VIEW OF LOBBY



Brooklyn

Interior Spaces

WHAT WE HEARD – INTERIOR SPACES



Number of community comments from September 7 Workshop and Online Portal.

WHAT WE HEARD – IMPLEMENTING KEY TAKEAWAYS

- **Humane centered design.**
- Community members emphasized that **programmatic space needs to be integrated throughout the facility**, including medical services that are easy to access on all floors.
- **Concern over stacked housing/double-tiers** creating a sense of claustrophobia or otherwise aggravating existing mental health concerns.
- **Design for mental health.**
- Design the placement of windows and **natural light access** within these spaces.

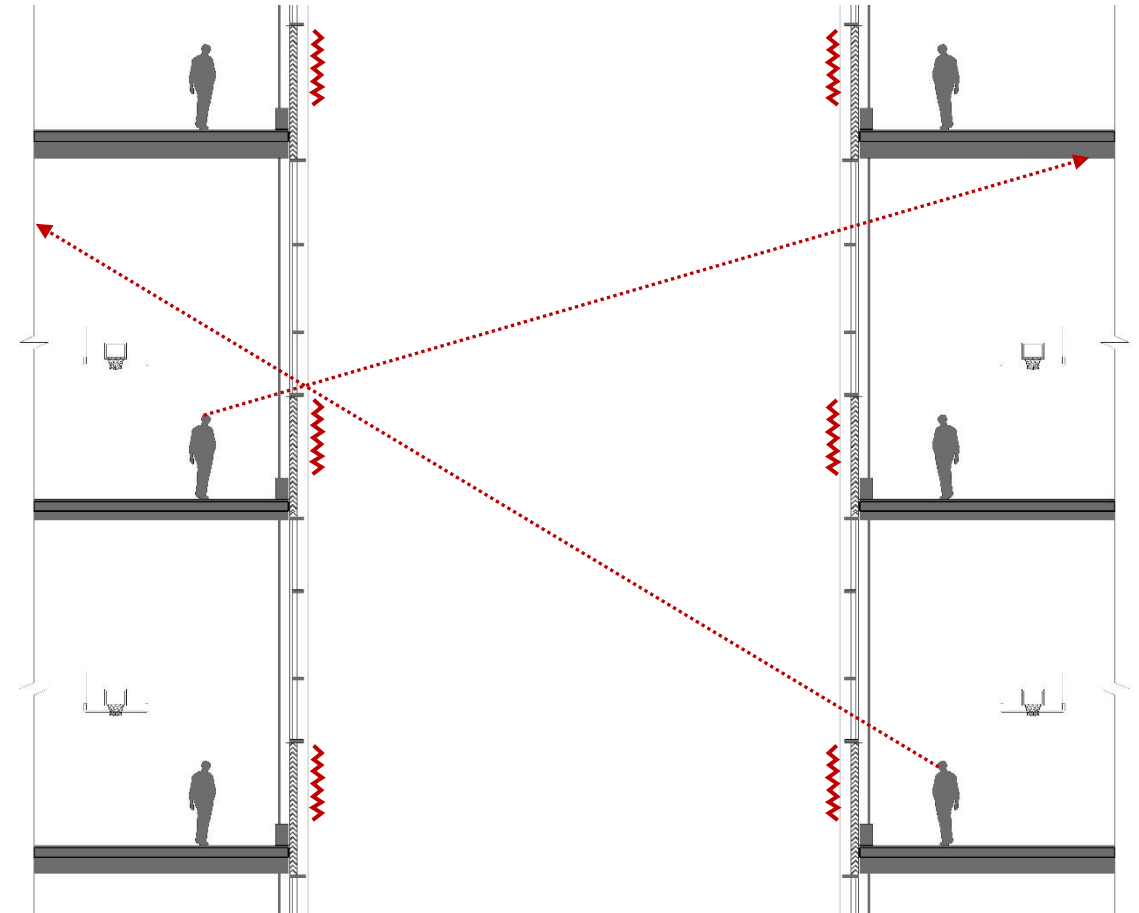
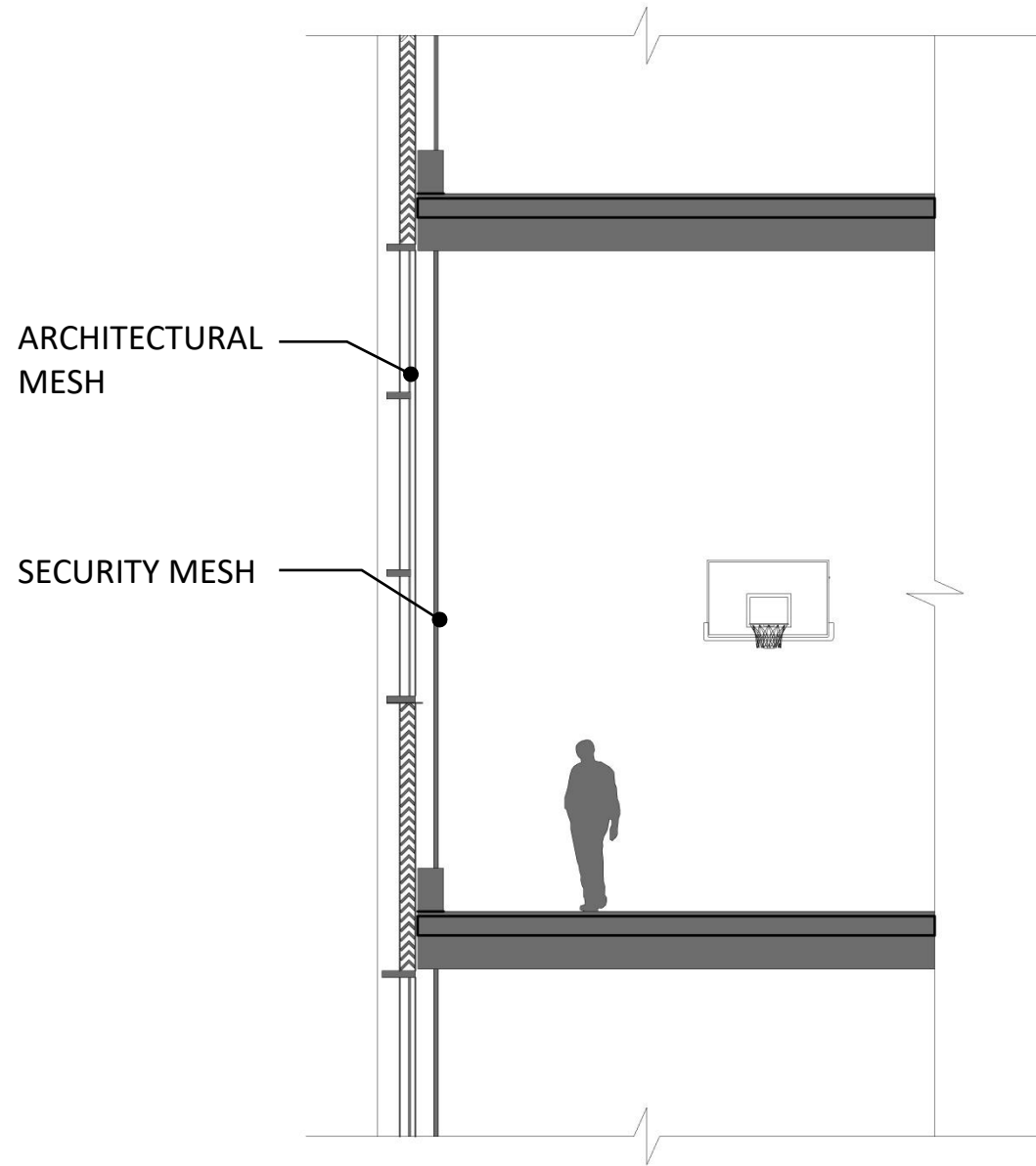
WHAT WE HEARD – STUDYING KEY TAKEAWAYS

- **Access to nature/outdoor space:** many participants had questions as to whether outdoor areas were truly outdoors and had views to the sky and fresh air. Some also asked about Rikers' existing horticulture program and if it would be continued, and how the rooftop will be utilized.
- General concern that interior spaces looked **“too sterile” and needed more greenery.**

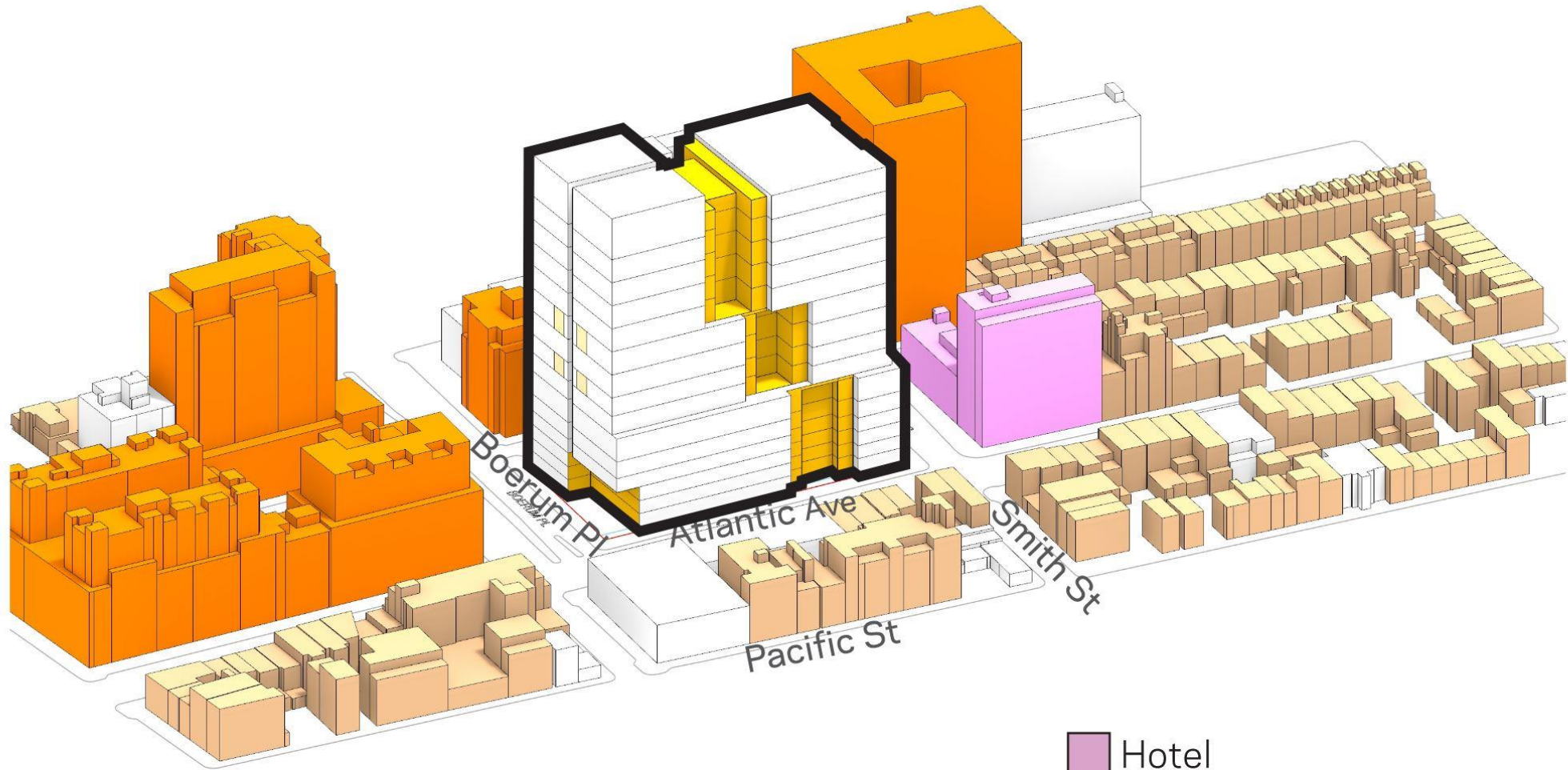
RECREATION YARD



RECREATION YARD SECTION SIGHTLINE

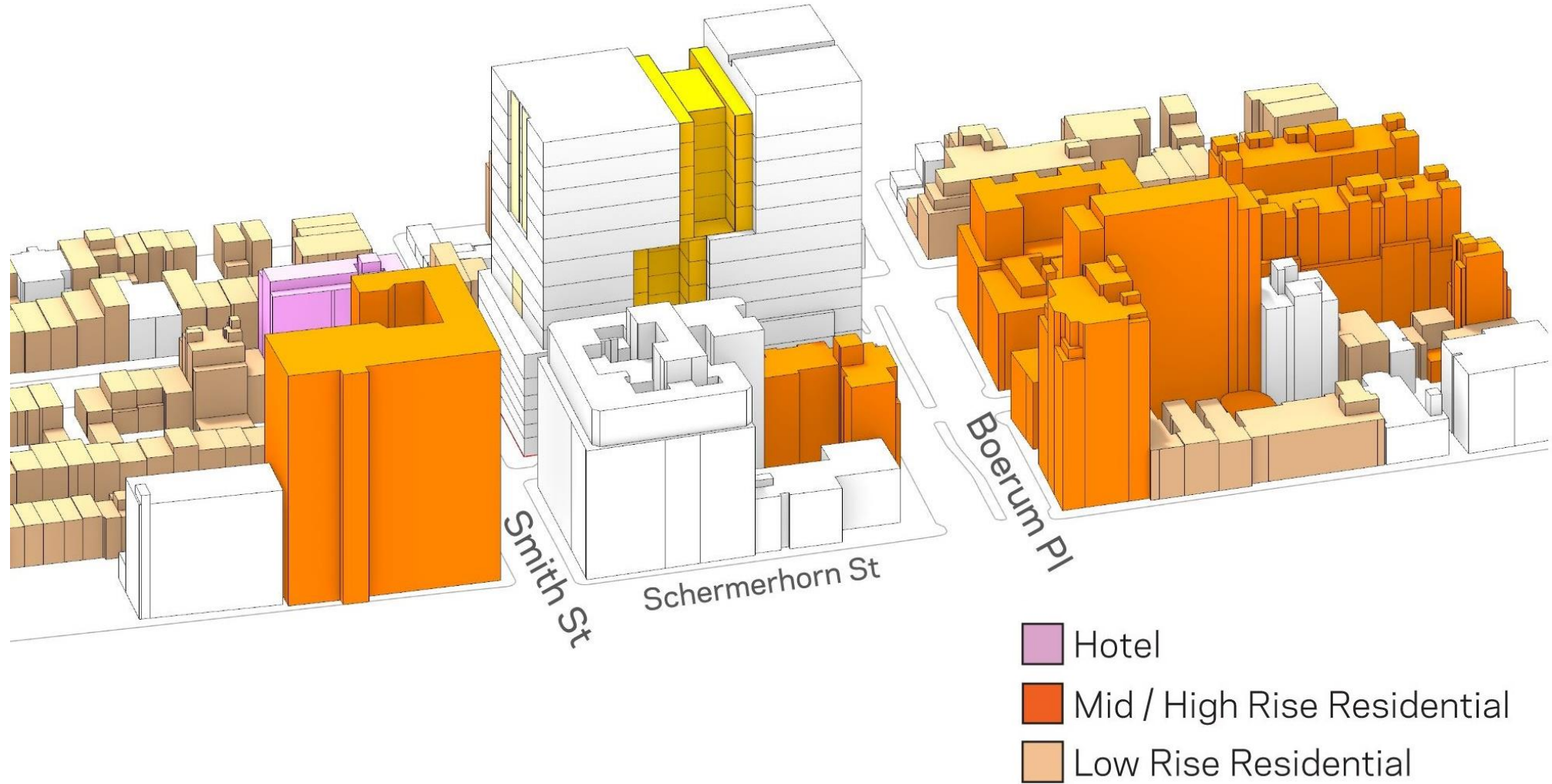


RESIDENTIAL BUILDINGS AROUND THE SITE – VIEW FROM SOUTHWEST

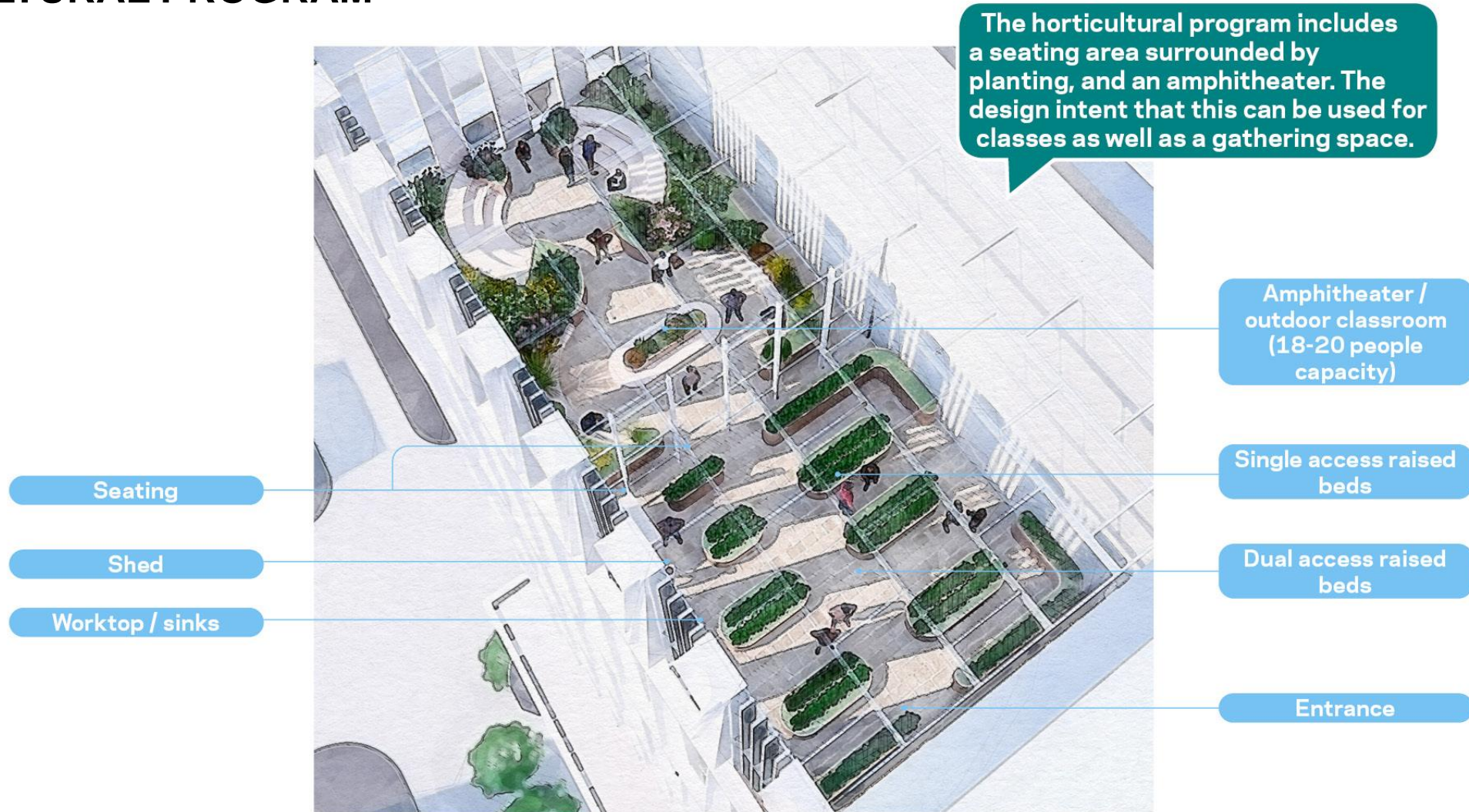


-  Hotel
-  Mid / High Rise Residential
-  Low Rise Residential

RESIDENTIAL BUILDINGS AROUND THE SITE – VIEW FROM NORTHEAST



HORTICULTURAL PROGRAM



Agenda

- 1 Community Engagement & Design Input Process
- 2 Justice & Equity in Design
- 3 Public Realm
- 4 Massing & Exterior Design
- 5 Interior Public Spaces
- 6 Interior Spaces
- 7 Work Sessions at Four Focus Areas
- 8 Share Out from Work Sessions
- 9 Closing

Work Session

Four Focus Areas - (4 x 15 minutes) = 60 min.

1. Interior Public Spaces - Ken
2. Public Realm - Autumn
3. Architecture - Aman
4. Interior Design - Jeff

Share Out from Focus Areas - 15 minutes



NYC Criminal Justice

NYC DDC Department of Design and Construction

Borough-Based Jails | NAC

Thank You



BK Brooklyn Borough Based Jail