



NYC Criminal Justice

NYC DDC Department of Design and Construction

Borough-Based Jails

Queens Advisory Committee Meeting Dismantle & Construction Updates

December 14, 2022

QN

Queens Site

December 2022

Agenda

- 1 What We Heard
- 2 Dismantle, Parking Garage & Community Space Projects Updates
- 3 Community Engagement and Resources
- 4 Q&A

Queens

What we heard

- 1) In advance of this meeting, the following topics were addressed in a response document shared with the Council Member and NAC:
 - Jail population data, projections and processes (DOC launched a dashboard providing monthly data: <https://www.nyc.gov/site/doc/about/doc-data-dashboard.page>)
 - Women's housing location in Queens BBJ facility
 - Parking cost to be determined by DOT once operator is selected (2023)
 - Investments in PS99 (ongoing)
 - Community engagement opportunities related to community space

Queens

Dismantle, Parking Garage & Community Space Projects Updates

Schedule Milestones

Milestone	Estimated Dates
Site Assessment and Surveys (Verification of existing building conditions)	December 2021 – May 2022
Interim Sally Port Start Construction	March 2022 – December 2022
Mobilization / Site Fencing (Site fencing, sidewalk shed installation, field office)	January 2022 – July 2022
Dismantle Work	January 2023 – July 2023
Trunk Water Main (~ 18 months duration)	Q1 2022 – Q3 2023
Queens Parking Garage and Community Space Completion	Q1 2023 (Substantial Completion)

*Estimated Dates and Milestones will be updated by Design-Builder

INFORMATIONAL PURPOSES ONLY

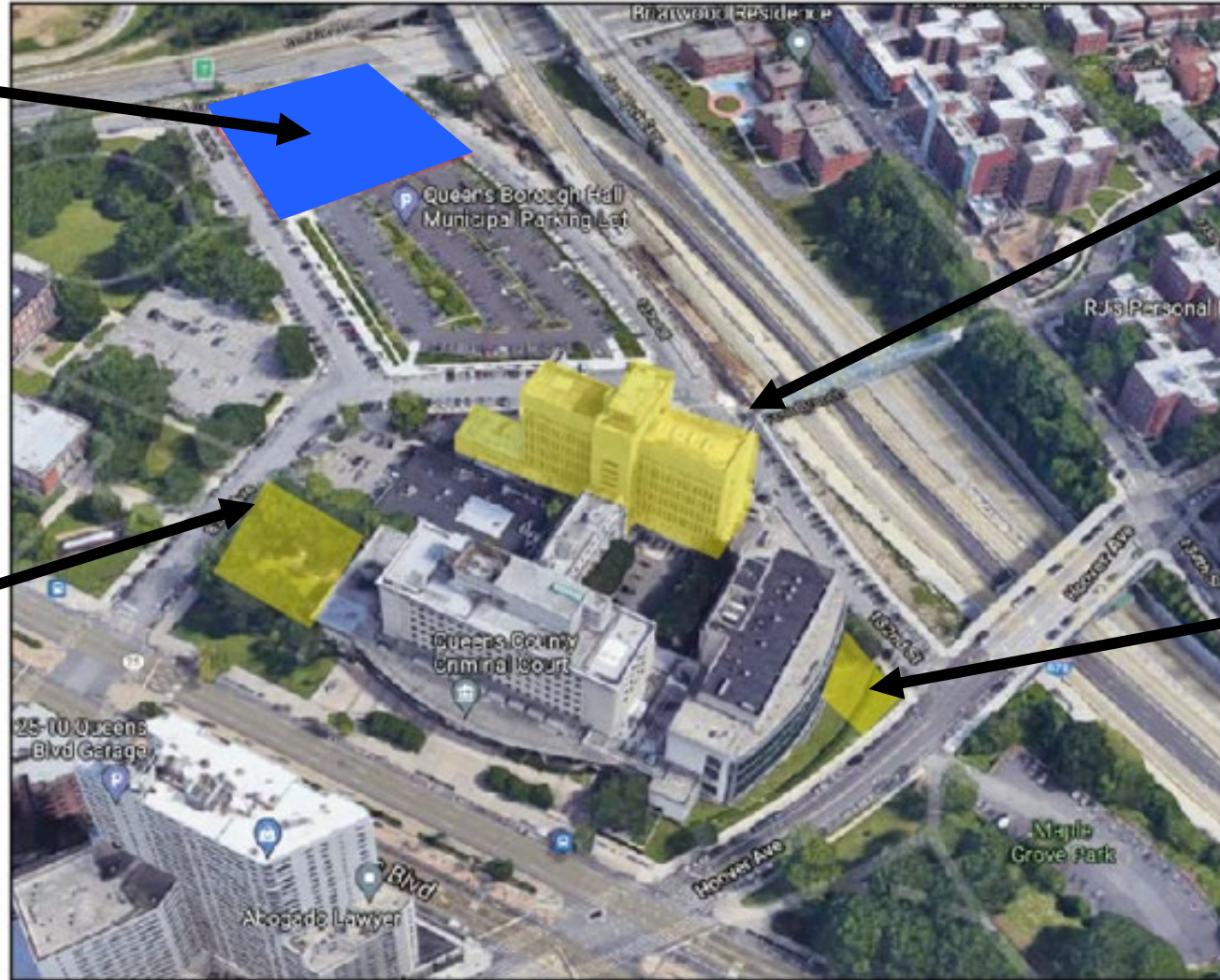
Overview of Construction & Dismantle Activities

Queens Parking Garage & Community Space Project

Nearing completion, see
photos on slide 10

Interim Sally Port

March 2022 – Dec 2022



Detention Center Abatement

April 2022 – May 2023

Dismantle

Jan 2023 - July
2023

Decoupling

April 2022 - Dec 2022

Dismantle Progress Photos



Scaffold (Detention Center) on 132nd St
12/07/22



Scaffold (DA Wing) on 82nd Ave
12/07/22



Vehicular Sally Port
12/07/22

Environmental Monitoring Updates

The BBJ team will provide quarterly environmental monitoring updates at Community Board and Neighborhood Advisory Committee (NAC) meetings and post monthly reports on the website <https://rikers.cityofnewyork.us/>.

Vibration Monitoring

- Continuously measuring peak particle velocity (PPV)

Noise Monitoring

- The BBJ Construction Management Team, Project Contractors and Environmental Specialists receive real time alerts when Particulate Matter (PM), decibels (dBa), or velocity of vibration (ips) number approach and Action Level.

Air Quality Monitoring

- The Action Level is set below the Permissible Exposure Levels (PEL.) When Action Levels are reached, the construction activities are assessed, and the contractor immediately acts to apply steps to control dust and emissions before the PEL is reached.



Vibration monitor installed in basement



Sound level meter installed outside on sidewalk

Environmental Monitoring Factsheets

- The Borough-Based Jails (BBJ) project team is committed to ensuring there is limited impact during our construction activities requiring the Design Builders not just to comply but go above and beyond the required New York State and City requirements.
- Environmental Monitoring Factsheets including specific information about Air Quality, Noise and Vibration Monitoring are available to the public online and at the BBJ CCLs offices.

<https://rikers.cityofnewyork.us>

BBJ Environmental Monitoring

The Borough-Based Jails (BBJ) project team is committed to ensuring there is limited impact during our construction activities requiring the Design

Oversight Team
Oversight for the environmental monitoring program is multi-tiered and includes checks and balances between several agencies and entities.

NYC **NYC DEC** **NYSDEC** **NYC Buildings**

Air Quality Monitoring

Community health and safety are extremely important to the City of New York. The Borough-Based Jails (BBJ) project team is committed to ensuring there is limited impact on nearby air quality during our construction activities. The BBJ requires the Design Builders not just to comply but go above and beyond the required New York State and City requirements.

Steps to control dust and limit emissions during construction.
To protect air quality, preventive measures during daily construction activities are being taken, and will be increased if monitoring machines indicate additional

Borough-Based Jails
<https://rikers.cityofnewyork.us/>

Vibration Monitoring

Community health and safety are extremely important to the City of New York. The Borough-Based Jails (BBJ) project team requires design-builders to implement a Vibration Monitoring Plan to monitor and minimize vibration from construction related activities not just to comply but go above and beyond the required New York State and City requirements.

Steps to monitor vibration during construction.
To ensure vibration levels are not impactful, preventive measures are being taken during daily construction activities, and will increase these measures if monitoring

Borough-Based Jails
<https://rikers.cityofnewyork.us/>

Noise Monitoring

Community health and safety are extremely important to the City of New York. The Borough-Based Jails (BBJ) project team is ensuring that noise from construction will be intermittent and of limited duration, and total noise levels will not rise to the level of a **significant adverse noise impact***. The BBJ requires the Design Builders not just to comply but go above and beyond the required New York State and City requirements.

Noise around the construction activities is being monitored.
Sound level meters are located on-site to monitor and ensure noise levels comply with New York City's noise codes (Local Law 113). During construction maximum noise level cannot exceed the following:

- 7:00 AM to 6:00 PM weekday:** 80 A-weighted decibels (dBA) as measured 50 or more feet from the source or sources at a point outside the property line or on a public right-of-way.
- 6:00 PM to 7:00 AM and weekend, if a permit is obtained:** 70 dBA as measured 50 or more feet from the source or sources at a point outside the property line or on public right-of-way, or an increase of 7 dBA above ambient (baseline), whichever is higher.
- During construction and/or container and material handling:** 10 dBA above the ambient level as measured at any point within a receiving property or as measured at 15 feet or more from the source on a public right-of-way.

WHAT IS BEING MEASURED

Decibels (dBA) level
Adjusted measurement of noise that considers the sensitivity of the human ear to the various sound frequencies that we can hear. A normal conversation corresponds to 60 dB, a heavy traffic to 85 dB, and a concert to 120 dB.

Decibel Scale

Sound level meter installed outside

Steps to monitor noise during construction.
To ensure noise levels are respected, preventive measures are being taken during daily construction activities, and will be increased if monitoring devices indicate additional action is needed.

Measures to reduce and control noise:

- Use mufflers on construction equipment (dump trucks, concrete mixers, excavation equipment, generators, trucks removing soil, etc.)
- Install noise monitoring stations distributed across the site.
- Perform initial background readings of all noise stations one week before construction activity in the area begins.
- Use absorbing materials placed around areas of noise generation (i.e., installing mass-loading vinyl or noise curtains.)
- Minimize truck idling or staging trucks within the site.
- Lowering debris into trucks in lieu of dropping.
- Utilize densifying attachments rather than impact hammers for slab dismantle.

***DEP defines significant adverse noise impact as the increase of 15 dBA or more for prolonged duration of 12 consecutive months or more or increase of 20 dBA or more for prolonged duration of 3 consecutive months or more.**

Parking Garage & Community Space Progress Photos



Parking garage view from 126th St & 82nd Ave
12/06/22



Community Space view from Union Tpke & 126th St
12/07/22

Queens

Community Engagement and Resources

Community Space Use- What have we heard ?

What can be the best use of the community space?

- Multipurpose community space, ideally run by a non-profit organization providing services for people
- Community meeting spaces (book rooms)
- Health Care Facility (Mental Health Center)
- Technology Professional School (STEM, IT, Coding)
- Cafeteria for visitors (retail not allowed)

Examples of Permissible Uses Community Facility (Use Group 3 & 4)*

Community Facilities to serve Educational needs provide recreational, health and essential services:

- Colleges or Universities
- Professional schools
- Libraries
- Museum
- Non- commercial Art Galleries
- Health Care Facility, Non-profit or voluntary hospitals (animal hospitals no allowed)
- Community Center
- Non- commercial Recreation Centers
- Philanthropic or non- profit institutions

*UG 3 & 4 are restrictive and **do not allow retail uses**

Community Resources During Construction

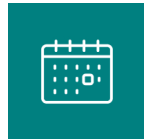


BBJ Website

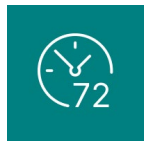
<https://rikers.cityofnewyork.us/>



Designated Phone Number



Weekly Look Ahead

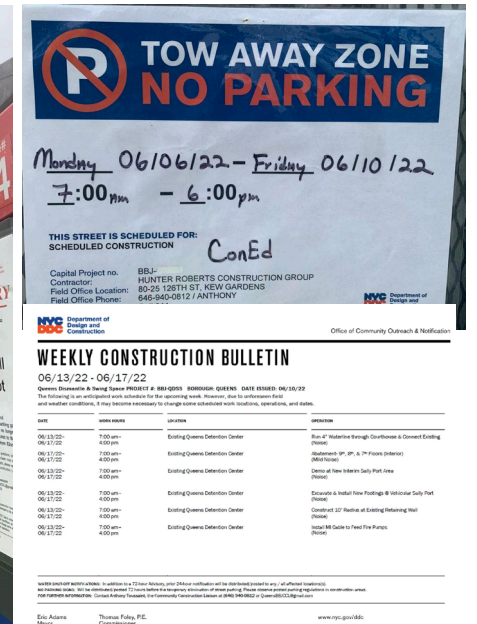


72-Hour Advisories for Impactful Construction Activities



Community Construction
Liaison & Field Office

Anthony Toussaint - Queens BBJ CCL
(646)-940-0812 / QueensCCL@bbjnyc.com
Municipal Parking Lot 80-25 126th St
Monday – Friday 7:00am - 3:30pm





NYC Criminal Justice

NYC DDC Department of Design and Construction

Borough-Based Jails | NAC

Thank You



QN Queens Site

December 2022

