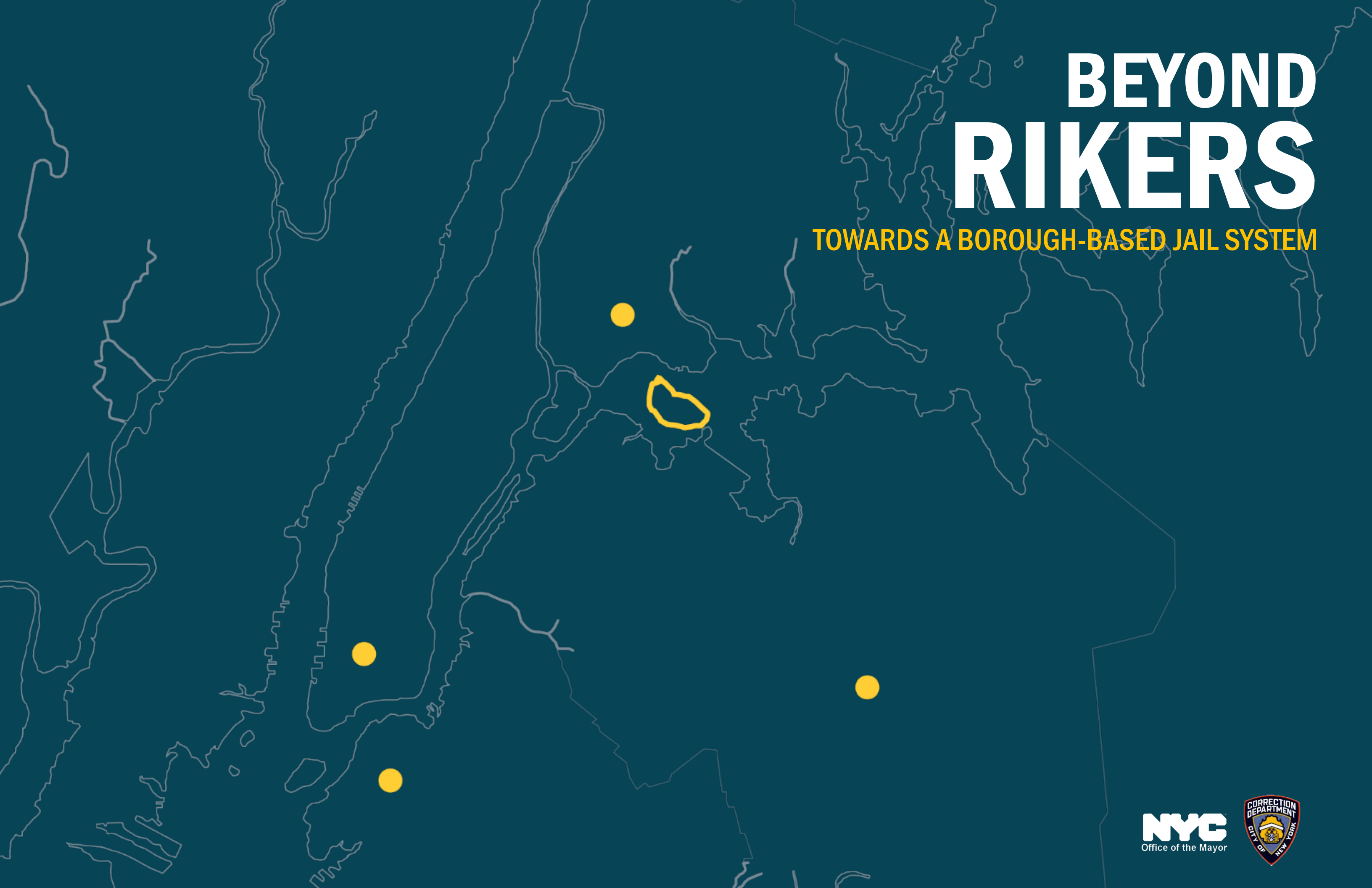


# BEYOND RIKERS

TOWARDS A BOROUGH-BASED JAIL SYSTEM



---

# TODAY'S AGENDA

1. Introductions
2. NAC Engagement Process
3. Timeline for Closing Rikers
4. Closing Rikers Island Jails
5. The Program
6. Community Concerns
7. Next Steps

---

# INTRODUCTIONS

- Mayor's Office, Community Affairs Unit
- Mayor's Office of Criminal Justice
- Perkins Eastman Team

---

# PURPOSE OF THE NEIGHBORHOOD ADVISORY COMMITTEE

1. Receive updated information about the Master Plan
2. Provide questions and receive information when additional research is needed
3. Summarize community concerns and aspirations
4. Build consensus on neighborhood investments
5. Develop list of recommendations

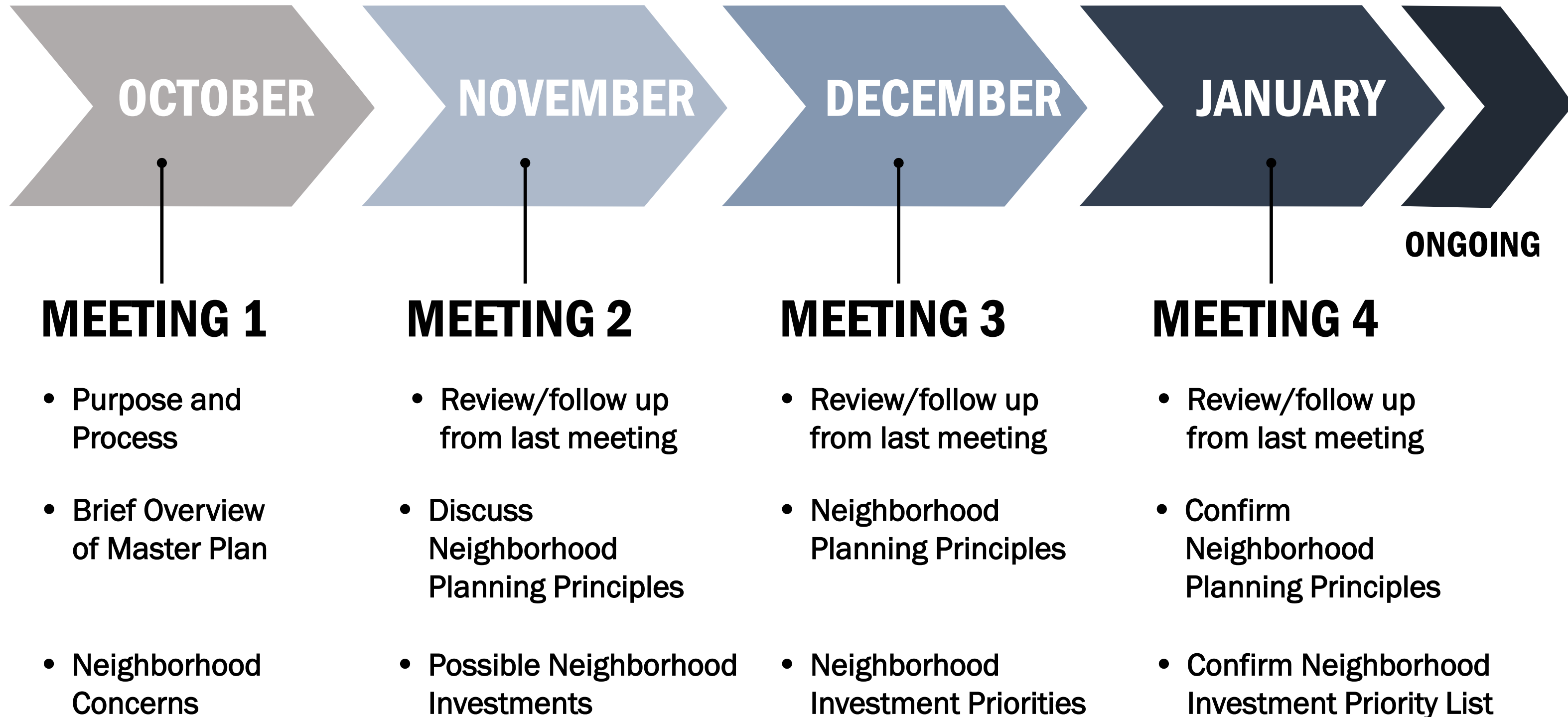
---

# ROLE OF NAC MEMBERS

As community leaders:

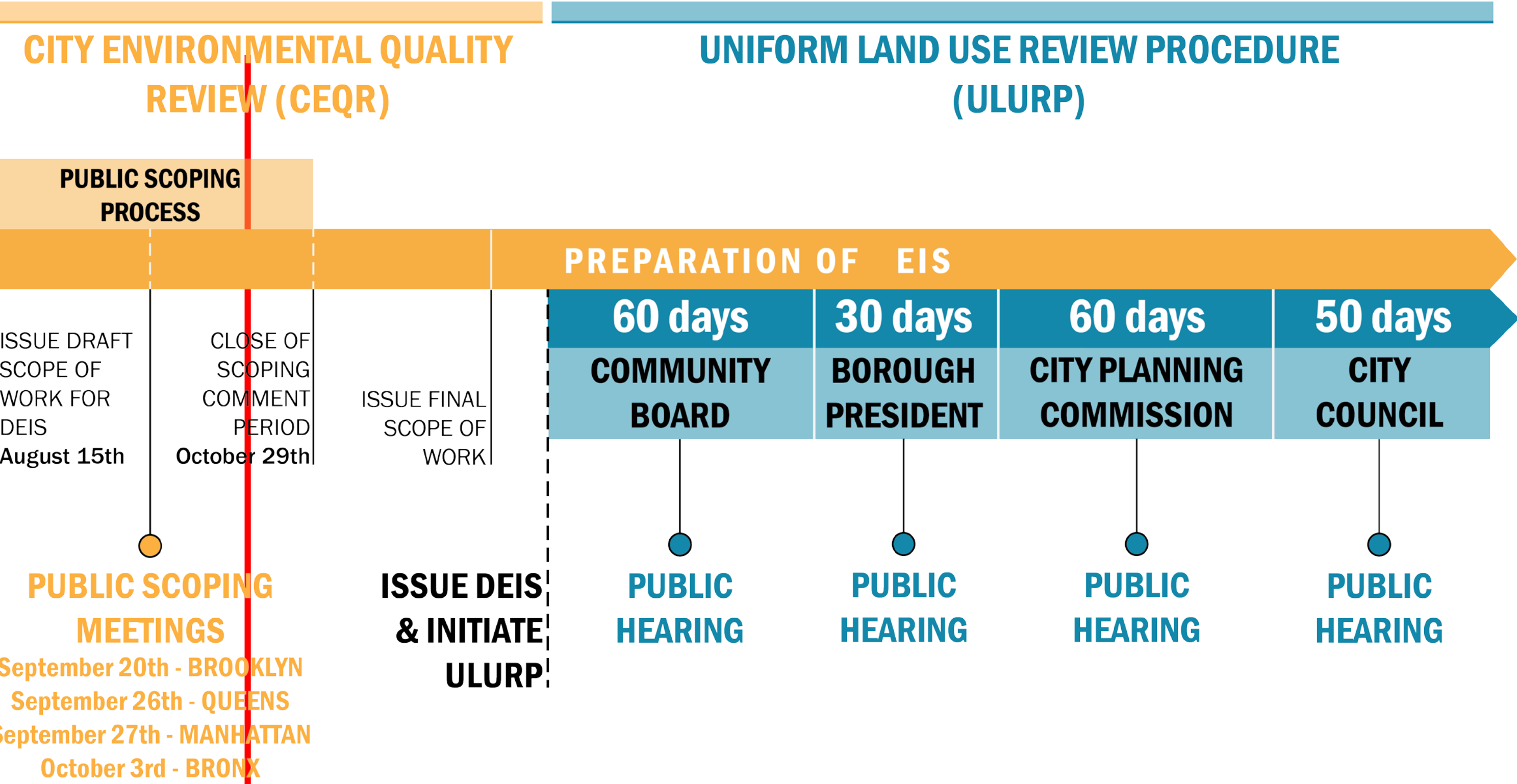
1. Provide your input on the Master Plan
2. Identify community assets and concerns that can be addressed
3. Advise on improving community communications

# NAC ENGAGEMENT PROCESS



# ULURP PROCESS

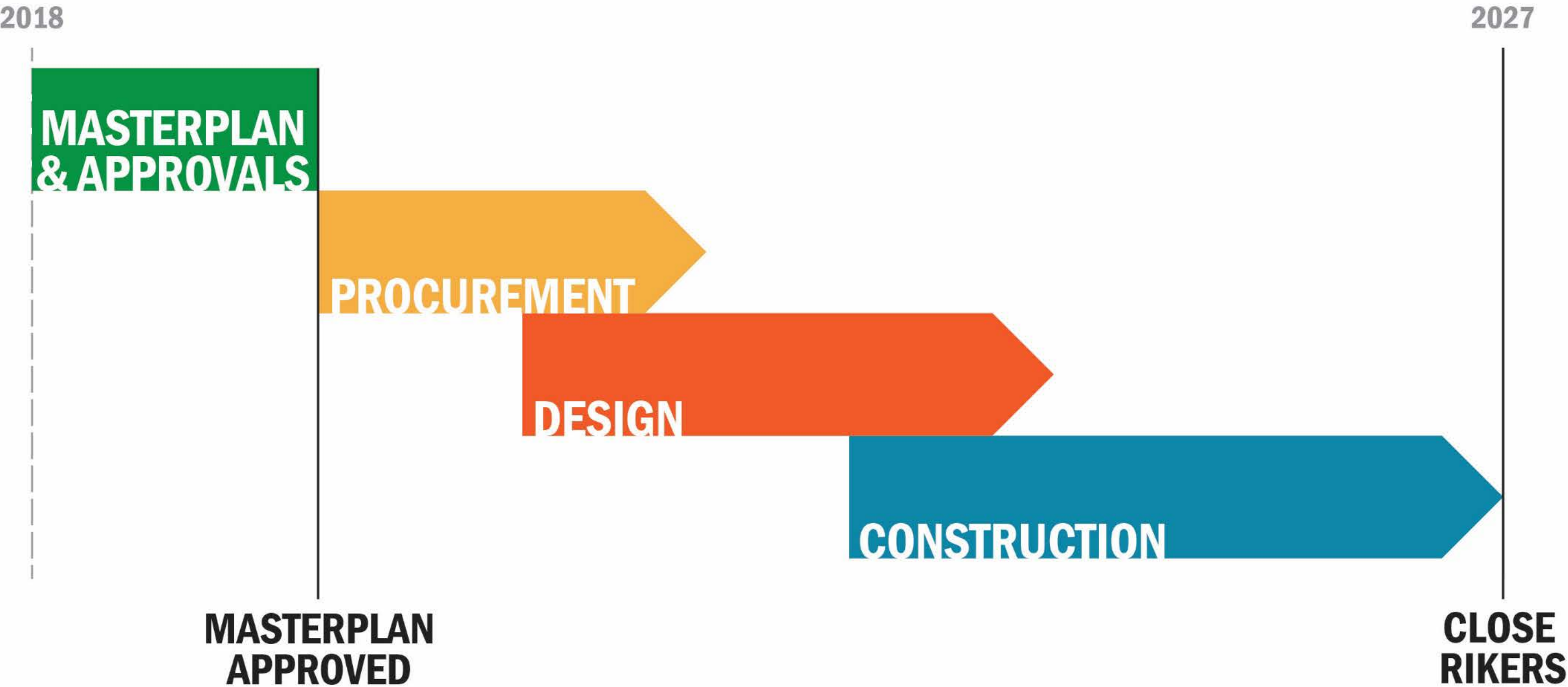
## MASTER PLAN NEXT STEPS



○ Public Meeting/Engagement Opportunity

# PROCESS: SCHEDULE TO CLOSING JAILS

TIMELINE FOR THE BOROUGH-BASED JAIL SYSTEM



# THE MORAL IMPERATIVE

## WHY WE ARE CLOSING RIKERS

- Recidivism and violence reduction efforts limited by Rikers' design and location
- The facilities are not up to modern standards with design and philosophy from another era
- Earliest facility built in 1932, most recent facility built in 1991



# THE MORAL IMPERATIVE

## WHY WE ARE CLOSING RIKERS

- Visiting loved ones is difficult—even prohibitive
  - It can take hours to travel to Rikers Island and upon arrival, visitors have to go through several check points
  - Challenging for those with jobs and childcare responsibilities
- Rikers' location can lead to delays in resolving cases, potentially resulting in longer stays in jail
  - Travel delays can lead to limited time with attorneys and missed court appearances
  - People in custody are often woken up at 4am to get to court



# WHAT IS A JAIL?

ALL JURISDICTIONS HAVE JAILS

## JAILS VS PRISONS

- Jail holds people who are being held pretrial and those sentenced to less than a year
- Prisons hold people who have been sentenced to more than a year

## ALL JURISDICTIONS HAVE JAILS

- Every city or county has a jail



# BOROUGH-BASED JAILS MASTER PLAN

## PROGRAM SUMMARY

### CLOSE JAILS ON RIKERS ISLAND

### REPLACE WITH A SMALLER, SAFER, FAIRER SYSTEM THAT WILL HAVE:

- Housing for a total of 5,000 people (requires 6,000 beds)
  - Current jail capacity in NYC: 11,300 beds (pre-GMDC closure: ~ 13,100 beds)
- Four borough-based sites (Manhattan, Brooklyn, Queens, and the Bronx)
  - Currently NYC has 11 active jails
- Evidence-based programming to reduce recidivism
- Focus on reentry and community reengagement

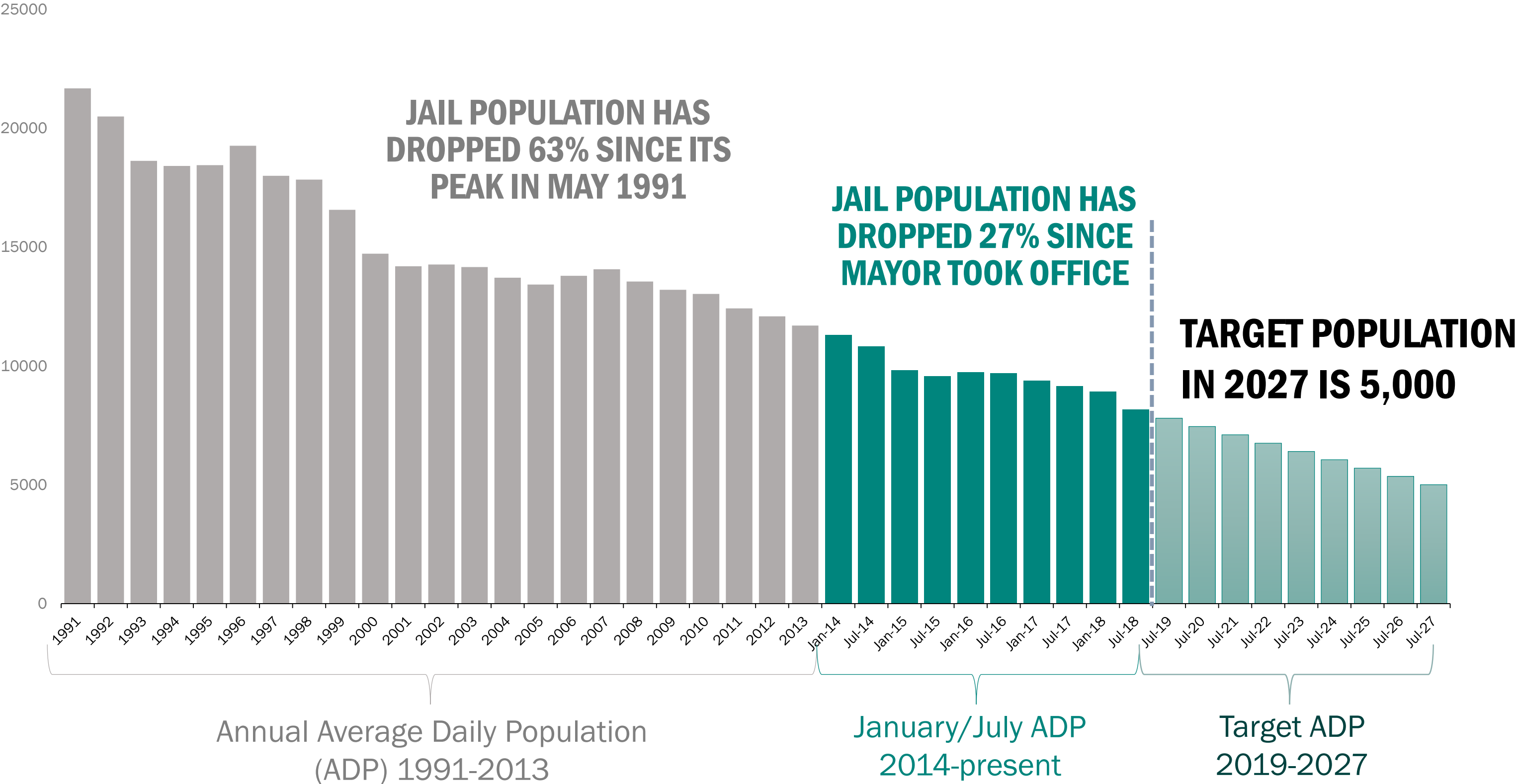


# CREATING A SMALLER, SAFER, FAIRER SYSTEM

Jail Population Reduction Initiatives	Culture Change Initiatives
<div>Diversion Initiatives (pretrial release)</div> <ul style="list-style-type: none"><li>Prevented over 10,000 people from entering jail pretrial</li></ul>	<div>Implementing Department of Corrections’ 14-Point Plan to combat violence and promote a culture of safety</div>
<div>Alternatives to Jail Sentences</div> <ul style="list-style-type: none"><li>32% reduction in people serving a city sentence</li></ul>	<div>Expanding Crisis Intervention Training for correctional officers</div>
<div>Bail Reform Initiatives (bail expeditors, expanding charitable bail fund, online bail)</div> <ul style="list-style-type: none"><li>60% reduction in people in jail on bail under \$2,000</li></ul>	<div>Providing peer mentoring and supportive services for correctional officers</div>
<div>Targeted Initiatives: Women, Adolescents, Mental/Behavioral Health Issues</div> <ul style="list-style-type: none"><li>Jail population down 330, 136 and 832 people, respectively</li></ul>	<div>Offering universal discharge planning and transitional employment support and connections to services to everyone leaving city jails</div>
<div>Criminal justice legislative reform in Albany</div>	<div>Offering increased and tailored programming opportunities to people in city custody</div>

# REDUCING THE SIZE OF NYC'S JAIL POPULATION

## CLOSING RIKERS



# CRIMINAL JUSTICE REFORM

Examples of Citywide Initiatives	
<b>Office to Prevent Gun Violence (OPGV)</b> <b>8 Cure Violence providers in Brooklyn:</b> GMACC East Flatbush, GMACC Fort Greene Operation Hood Coney Island Save Our Streets Crown Heights and Bed Stuy Map Up In. East NY and Bedford Stuy CAMBA Brownsville	Partners with New Yorkers to reduce the remaining gun violence in New York City. Some OPGV programs include: Crisis Management System, School Conflict Mediation, Employment programs, Therapeutic Mental Health Services, and Legal Services.
<b>Mayor’s Action Plan for Neighborhood Safety (MAP)</b> <b>7 MAP sites in Brooklyn:</b> Ingersoll Houses, Boulevard Houses Brownsville Houses, Van Dyke Houses, Bushwick Houses, Redhook Houses, Tompkins Houses	Improves public safety in 15 New York City Housing Authority (NYCHA) developments by implementing a targeted and comprehensive approach to reducing violent crime.
<b>Justice Involved Supportive Housing (JISH)</b>	Implements a comprehensive strategy to reduce the number of people with behavioral health needs who enter jail, return to jail, and reduce the length of time they stay in jail.

# CRIMINAL JUSTICE REFORM

Examples of Citywide Initiatives	
Supervised Release	City’s primary pre-trial diversion program to cut unnecessary detention and reduce reliance on money bail. Prevented more than 10,000 people from entering jail.
Jails to Jobs	Key piece of the citywide, universal re-entry system being operated through a partnership between the Mayor's Office of Criminal Justice, the Department of Correction, and a network of expert non-profit organizations.
Women’s Initiatives	Aimed at intensifying the efforts to break the cycle of arrest, incarceration, reentry, and family disruption for incarcerated women. Includes transitional housing beds with support services for justice-involved women who otherwise would be facing detention or incarceration in the absence of this resource.

# CRIMINAL JUSTICE REFORM

Examples of Citywide Initiatives	
School Climate	Improving school disciplinary policies that will result in safer schools with fewer suspensions, as well as offer dedicated resources to reduce racial disparities and better support for high-need schools and students
Bail Reform	Helping people charged with misdemeanors who have had bail set at or below \$2,000 through the City’s Charitable Bail Fund
	Funding The Legal Aid Society’s Second Look program so that it can provide legal and social services for people held on bail.
	Expanding bail expeditors program in partnership with the NYC Criminal Justice Agency to assist people navigating the bail payment process to avoid time in custody.
Closed GMDC in June 2018	NYC’s jail population has fallen by 27% since Mayor de Blasio took office, while crime has remained at historic lows. City closed GMDC jail on Rikers Island.
BEYOND RIKERS: TOWARDS A BOROUGH-BASED JAILS MASTER PLAN	

# GOALS FOR THE BOROUGH-BASED JAIL SYSTEM



- Designed to improve health, educational, and social outcomes
- Closer to lawyers, service providers, families and home communities
- Fewer families impacted by the criminal justice system



- Close outdated and poorly designed jails on Rikers Island
- Improve lines of sight and safety using a more modern layout
- Reduce violence with new procedures, smaller units and better monitoring
- Provide quality programming to reduce recidivism



- Reduce unnecessary case delays which expand jail population and length of stay
- Decrease housing and transportation costs through more efficient facilities and transportation routes as well as a smaller jail population
- Streamline transfers between jail and courthouses
- Improve attorney and service provider access to clients

# DESIGNING A WELCOMING LOBBY

CULTURE CHANGE

**NATURAL LIGHT**

**WORK AREA**

**VISITING**

**AMENITIES  
+ SERVICES**

**INFORMATION  
HELP DESK**

**WAITING AREA**

**INFORMATION  
KIOSKS**

# DESIGNING COMFORTABLE VISITING SPACES

CULTURE CHANGE

**FOOD  
OPTIONS**

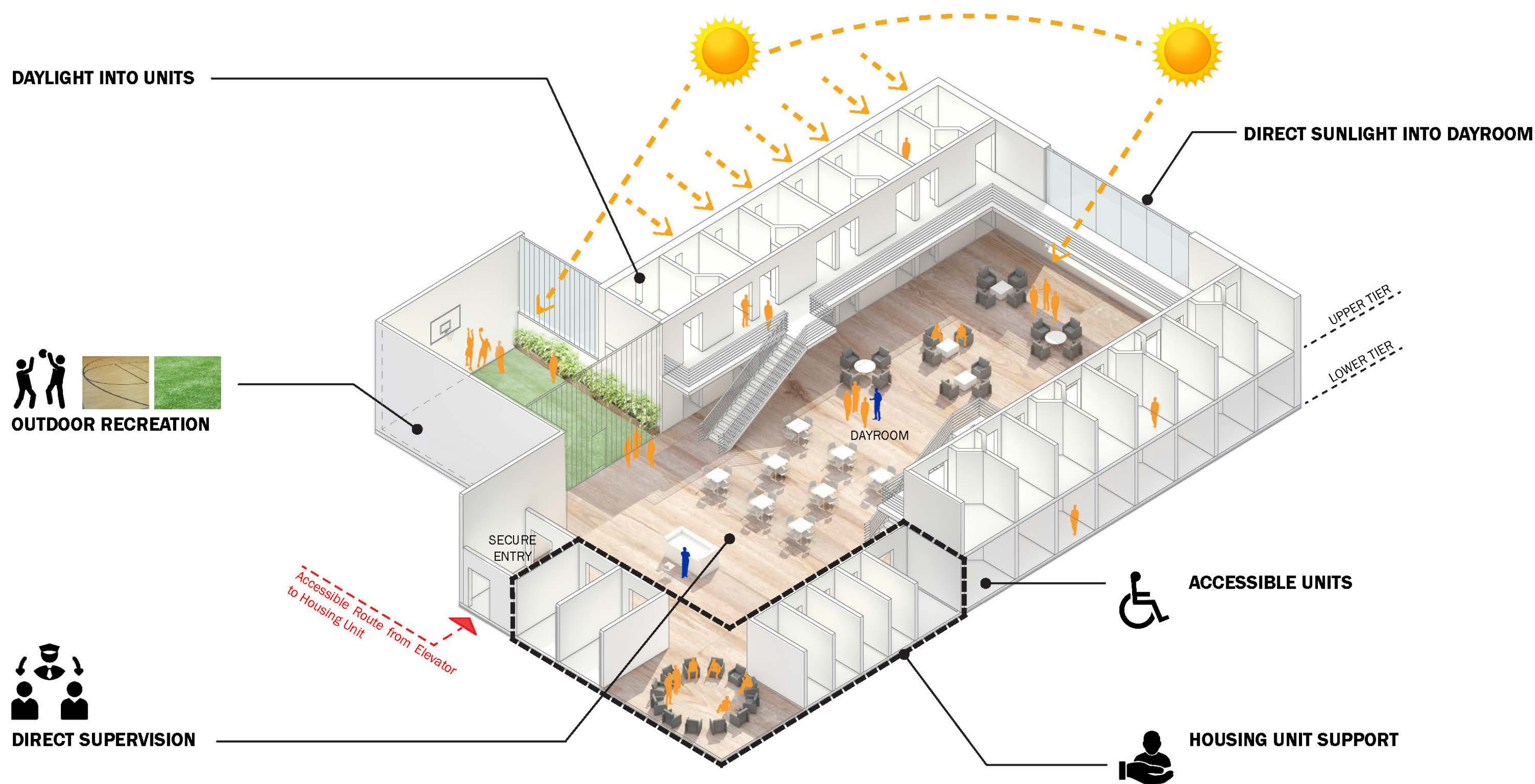
**NATURAL LIGHT**

**VISITING AREA**

**CHILD CENTERED  
VISIT SPACE**

# TYPICAL HOUSING UNIT

CULTURE CHANGE

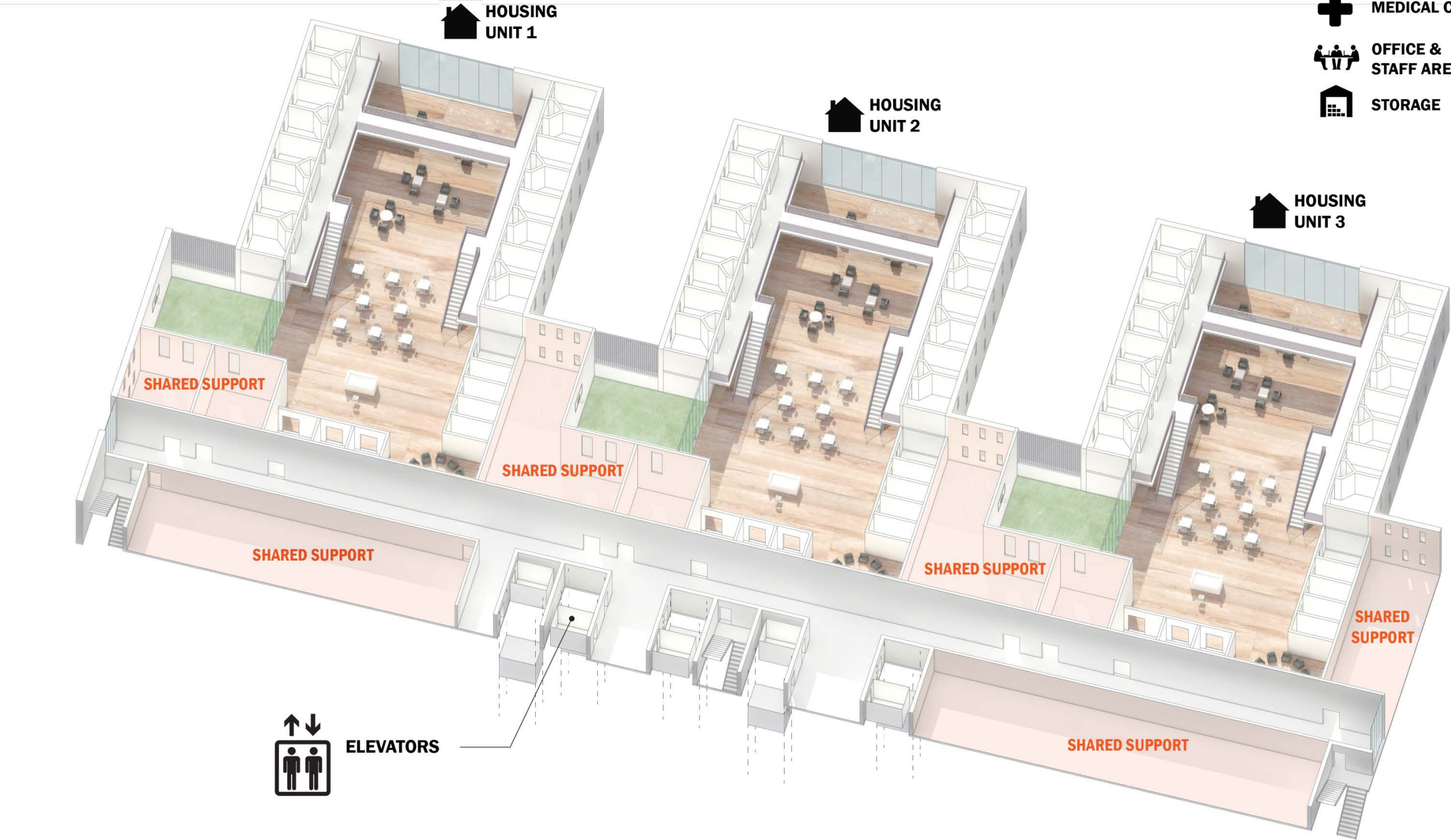


# TYPICAL HOUSING FLOOR

CULTURE CHANGE

SHARED SUPPORT PROGRAMS INCLUDE:

-  PROGRAM/  
INTERVIEW SPACE
-  VIDEO COURT/  
ATTORNEY MEETING
-  PANTRY/ FOOD  
STAGING
-  MEDICAL CARE
-  OFFICE &  
STAFF AREA
-  STORAGE







**BROOKLYN**

# NEIGHBORHOOD CONTEXT



# PROGRAM SUMMARY

AS OF 10/24

## USE

Housing Units	995,000
Support	370,000
Centralized Care	0
Retail/Community	30,000

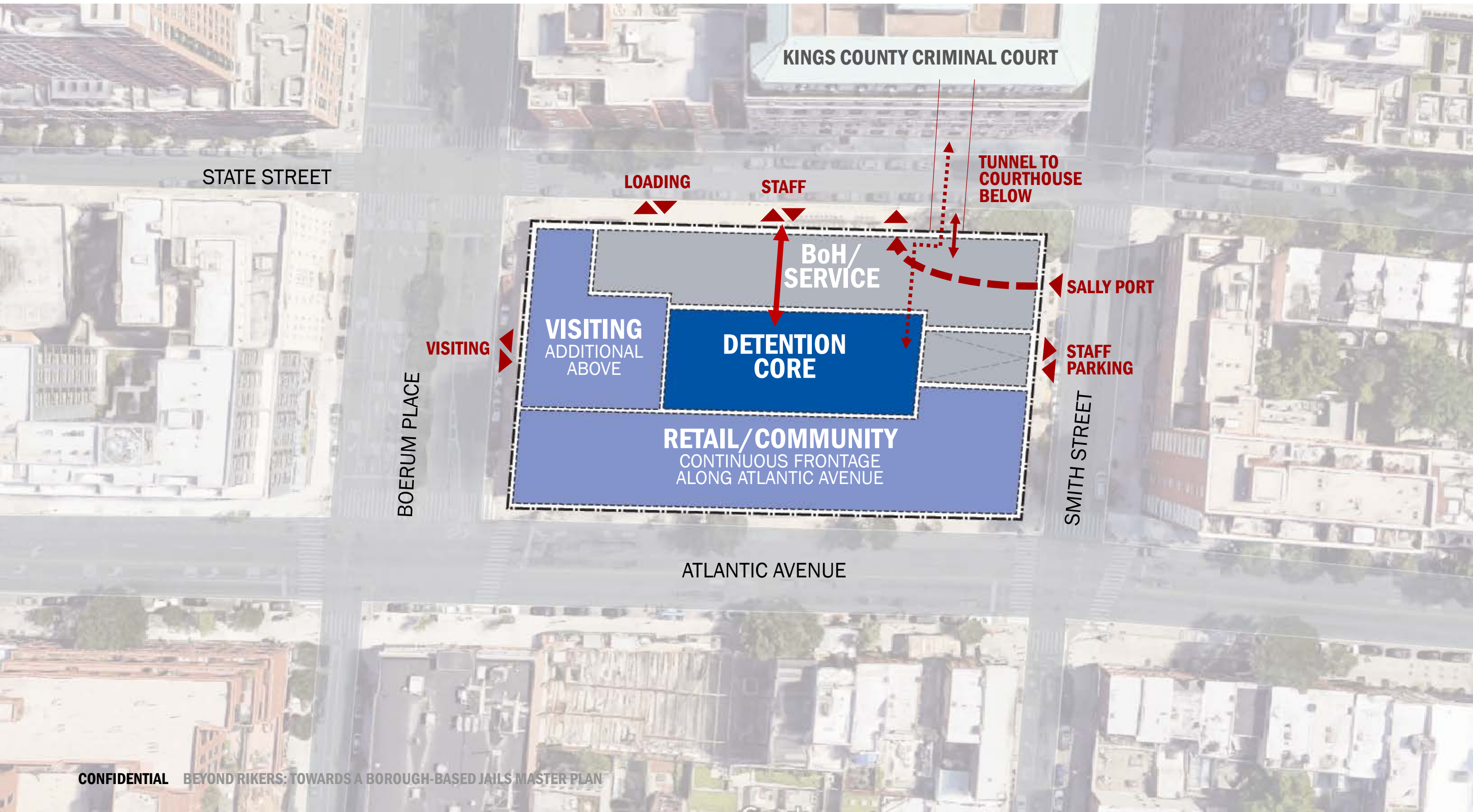
TOTAL	1,400,000	GFA**
	1,205,000	ZFA

BEDS	1,510
HEIGHT	430'
PARKING SPACES PROVIDED	277 spaces*

\* Assumption: – Peak Project – Generated Demand Less Existing Off-Site Space Used by DOC Staff and Visitors

\*\* GFA excludes accessory parking of 120,000SF

# GROUND LEVEL ACCESS AND USES



# ATLANTIC STREET ACTIVATION



# WHAT WE HAVE HEARD

## COMMUNITY CONCERNS

### Process

### Traffic, Parking and Transit

### Neighborhood Character and Quality of Life

### Community Needs

### Height/Density

### Future of Rikers Island

# PROCESS: BROOKLYN ENGAGEMENT TO DATE

- **August 3, 2018: US Congresswoman Velazquez Meeting**
- **August 9, 2018: Council Member Levin Community Engagement**
- **August 27, 2018: BDC Neighborhood Walk**
- **September 14, 2018: Brooklyn Community Organizations Briefing**
- **September 20, 2018: Scoping Meeting**
- **October 4, 2018: Council Members Levin, Powers, Rosenthal, Close Rikers, & Women's Community Justice Project Roundtable**



# PROCESS: SITE SELECTION

## Four Sites

### SITE SELECTION CRITERIA

- Close to Courthouse
- City-owned property
- Transit-Accessible
- Sufficient site area



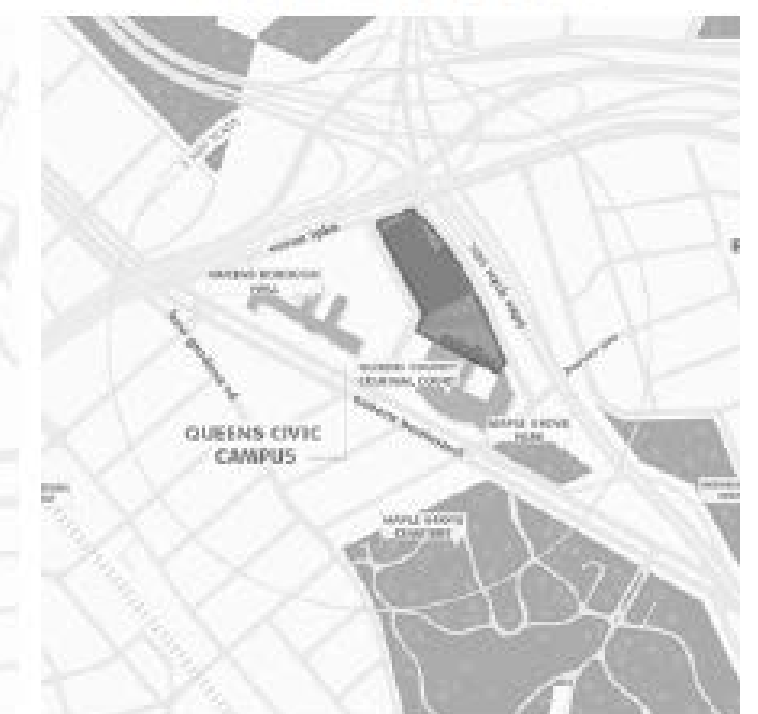
**BROOKLYN**



**THE BRONX**



**MANHATTAN**



**QUEENS**

# TRAFFIC, PARKING & TRANSIT



# TRAFFIC, PARKING & TRANSIT

ATLANTIC AVE INTERSECTION VIEW



# TRAFFIC, PARKING & TRANSIT

STATE STREET VIEW – BACK DOOR OF JAIL

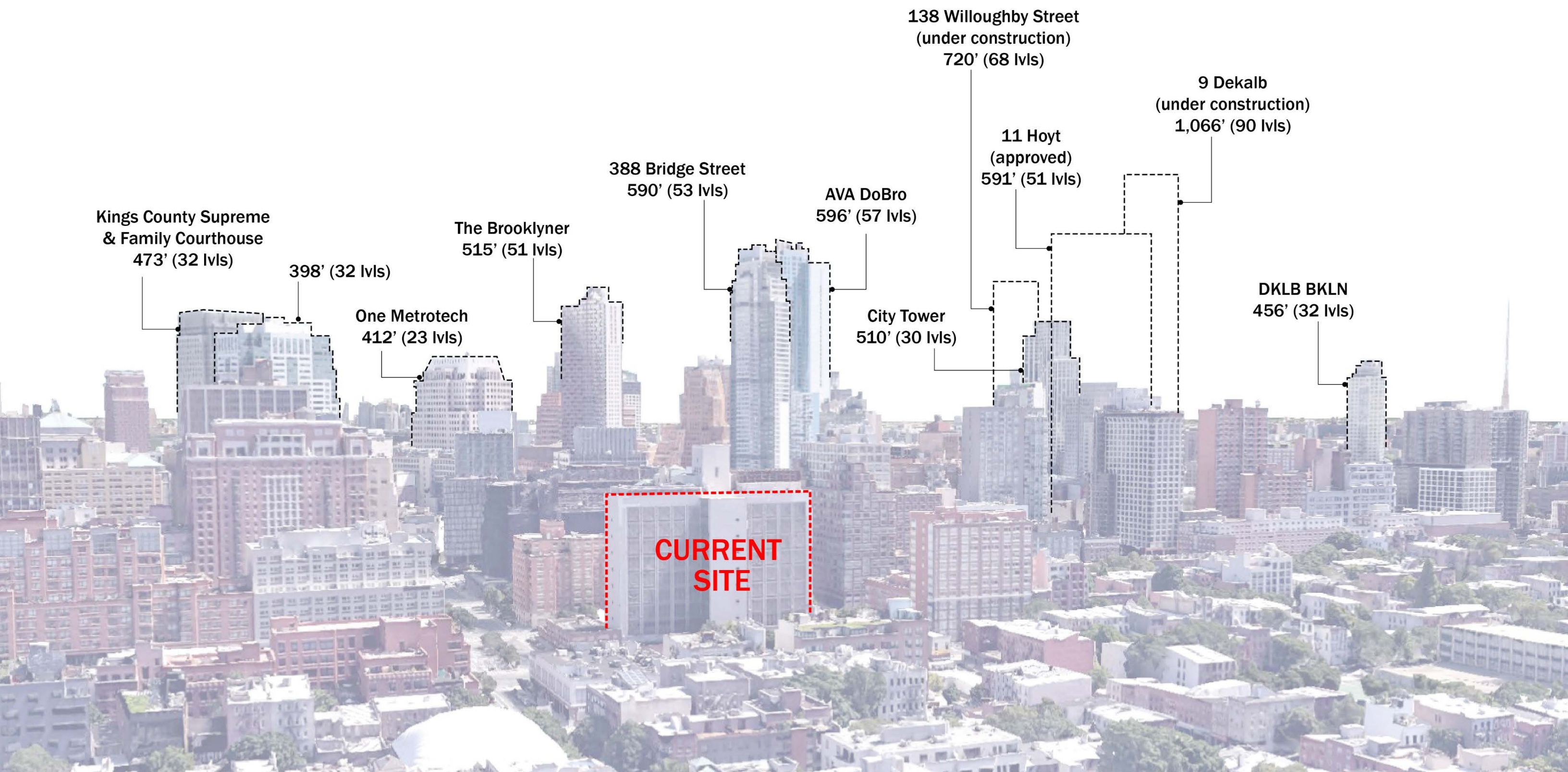


# TRAFFIC, PARKING & TRANSIT

- Placard Abuse
- Idling/ Standing Jails Facility Vehicles

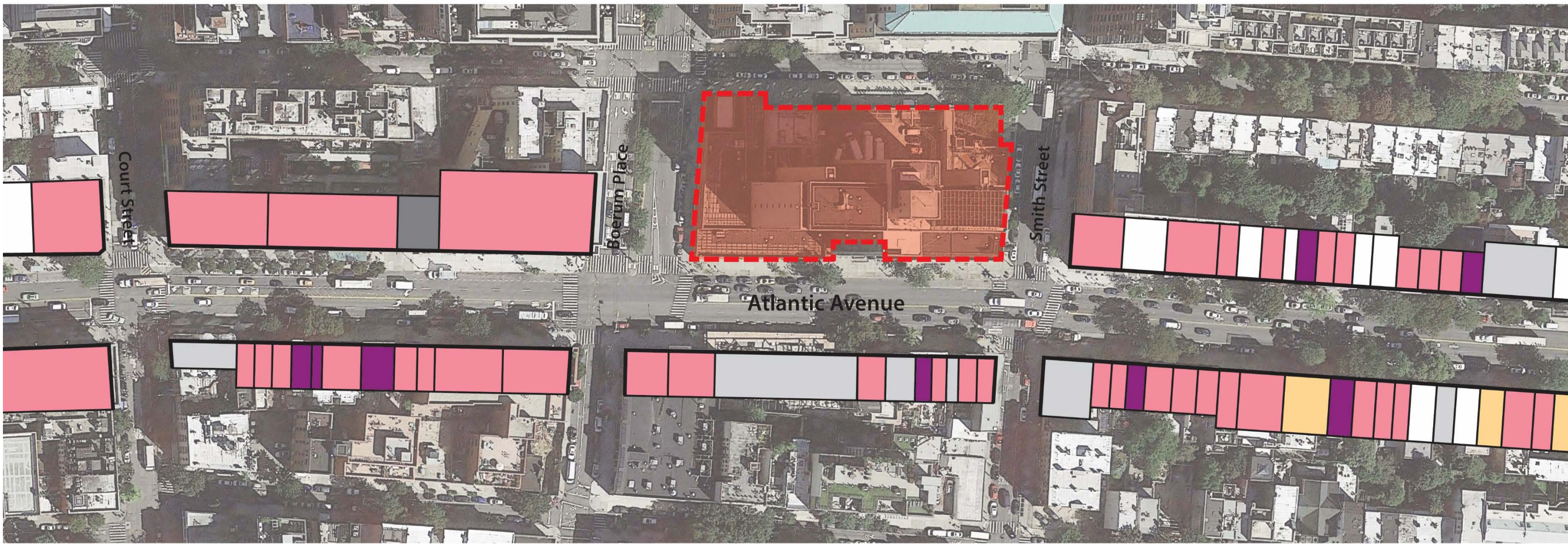


# AN INCREASING NEIGHBORHOOD DENSITY



# NEIGHBORHOOD CHARACTER & QUALITY OF LIFE

EXISTING ATLANTIC AVE FRONTAGE



Legend

	Retail
	Food
	Unkown
	Vacant/Under Construction
	Residential
	Other non-retail

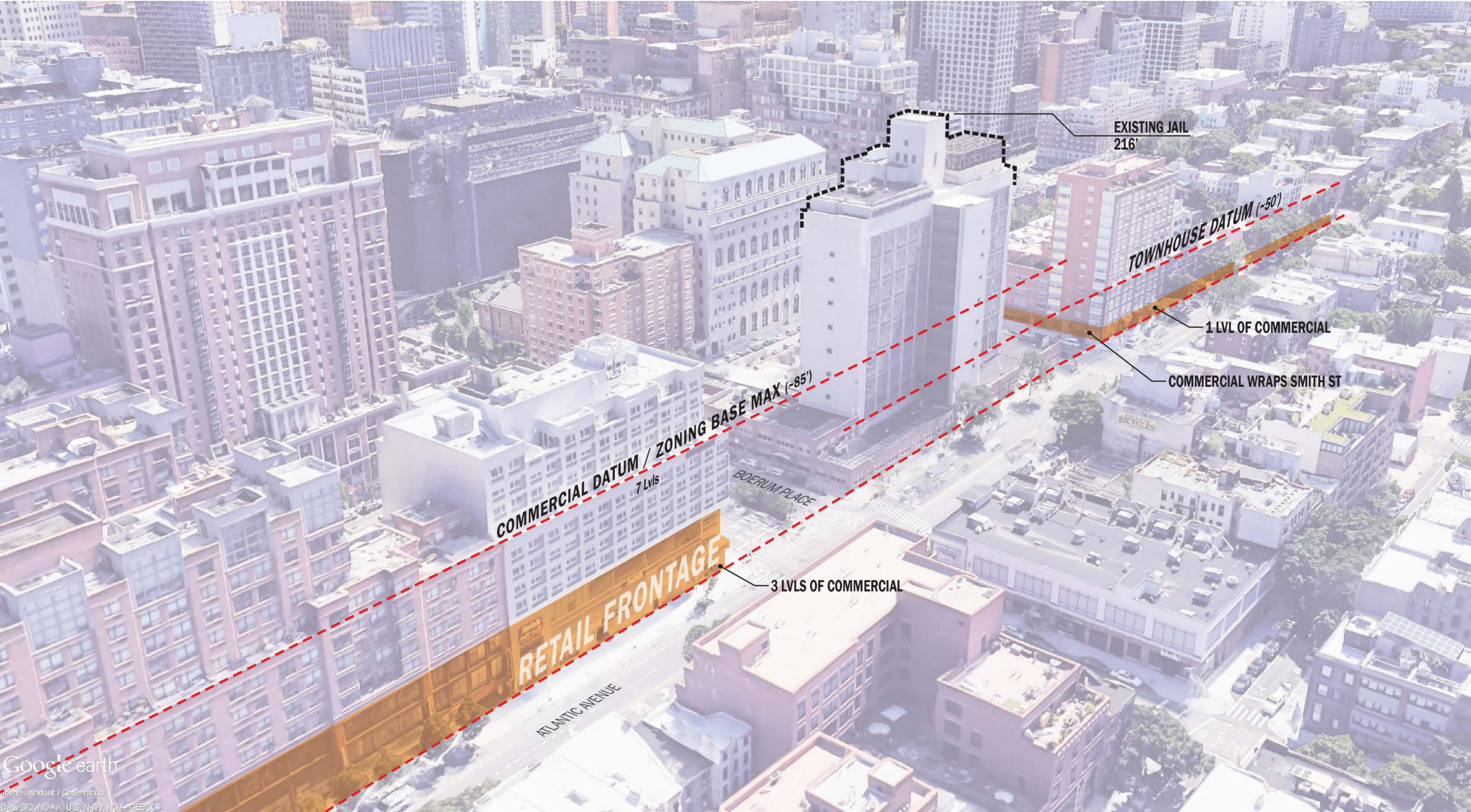
# NEIGHBORHOOD CHARACTER & QUALITY OF LIFE

VIEW ON ATLANTIC AVENUE – FRONT DOOR OF JAIL



# 275 ATLANTIC AVENUE

## ATLANTIC AVENUE CONTEXT



# NEIGHBORHOOD CHARACTER & QUALITY OF LIFE

SMITH STREET VIEW NORTH



# NEIGHBORHOOD CHARACTER & QUALITY OF LIFE

VIEW NORTH BOERUM PLACE

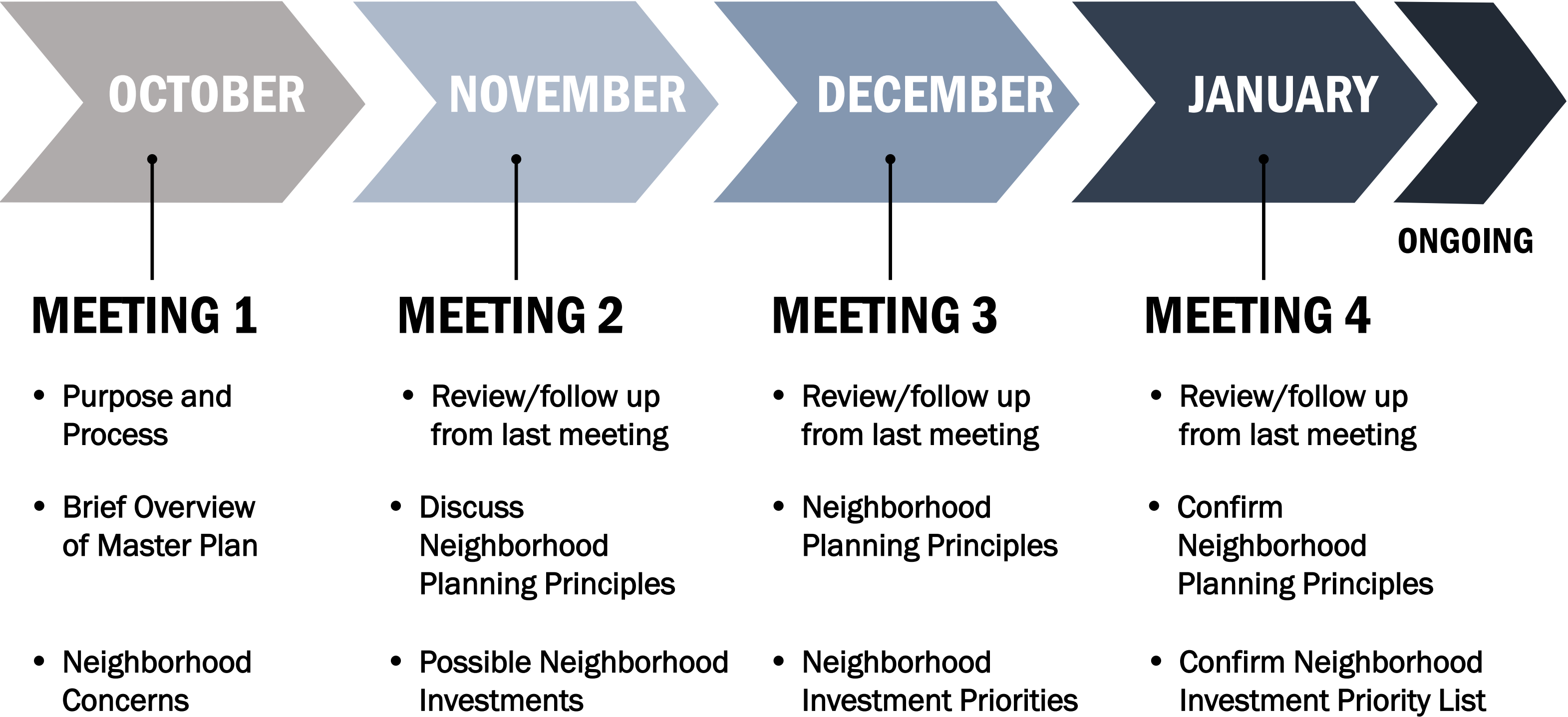


# NEIGHBORHOOD CHARACTER & QUALITY OF LIFE

VIEW ON STATE STREET – NEXT TO COBBLE HILL NEIGHBORHOOD



# NAC ENGAGEMENT PROCESS



---

# NEXT STEPS

- Homework: ideas for neighborhood investments
- Scheduling the next meeting

A map of the Chesapeake Bay region, including parts of Maryland, Virginia, and Delaware. A yellow line outlines the Potomac River watershed, which flows into the bay. The text "THANK YOU" is centered over the map.

**THANK YOU**

---

# OPEN COMMENTS FOR DRAFT SCOPE OF WORK

Howard Fiedler

NYC DOC

75-20 Astoria Blvd., Suite 160, East Elmhurst, NY 11370

[boroughplan@doc.nyc.gov](mailto:boroughplan@doc.nyc.gov)

Closes Oct 29th