



Culture Change Working Group Meeting #3

January 17, 2018

Justice Implementation Task Force

Agenda

1. **Introductions and updates**
 1. Updates from MOCJ
 2. Looking ahead
2. Programming
 - a. Overview of programming on Rikers Island
 - b. Programming research
3. Discussion and next steps

Progress towards closing Rikers

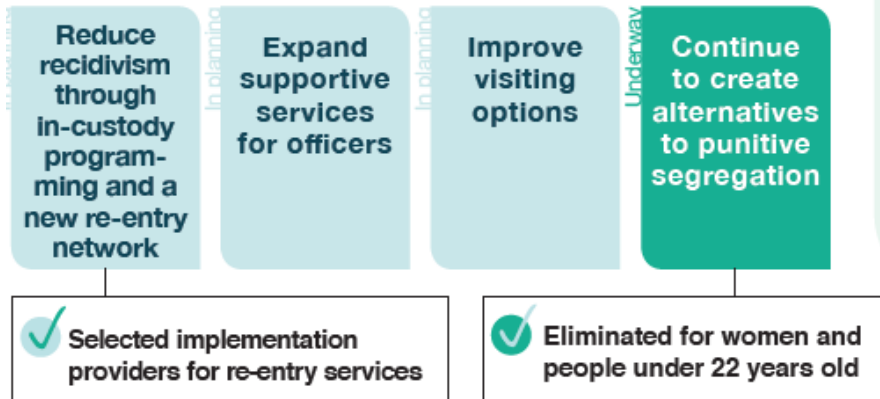
- New York City's jail population is under 9,000 for the first time in 35 years.
- New York City announced that due to the reductions in the number of people in jail, we are able to close a facility on Rikers Island—GMDC will be closed by Summer 2018.
- New York City announced its plans to transfer adolescents off of Rikers Island.
 - o Propose to use Crossroads, Horizon, and OCFS Facility Ella McQueen for intake.
- Rikers tour planning is underway.

Status of strategies

3 FAIRER

CHANGING THE CULTURE AND PURPOSE OF JAILS

Strategy Overview: The Roadmap includes four strategies to improve the culture in city jails.



PERSPECTIVES FROM OUR PARTNERS

“Housing Works is committed to partnering with the Mayor’s Office of Criminal Justice to take a call to action by servicing individuals involved in the criminal justice system. This partnership would allow individuals fair, equal access to health and wellness services and workforce development opportunities. Housing Works is dedicated to building safer, healthier communities and playing a key role in reducing recidivism through New York City’s Department of Correction.”

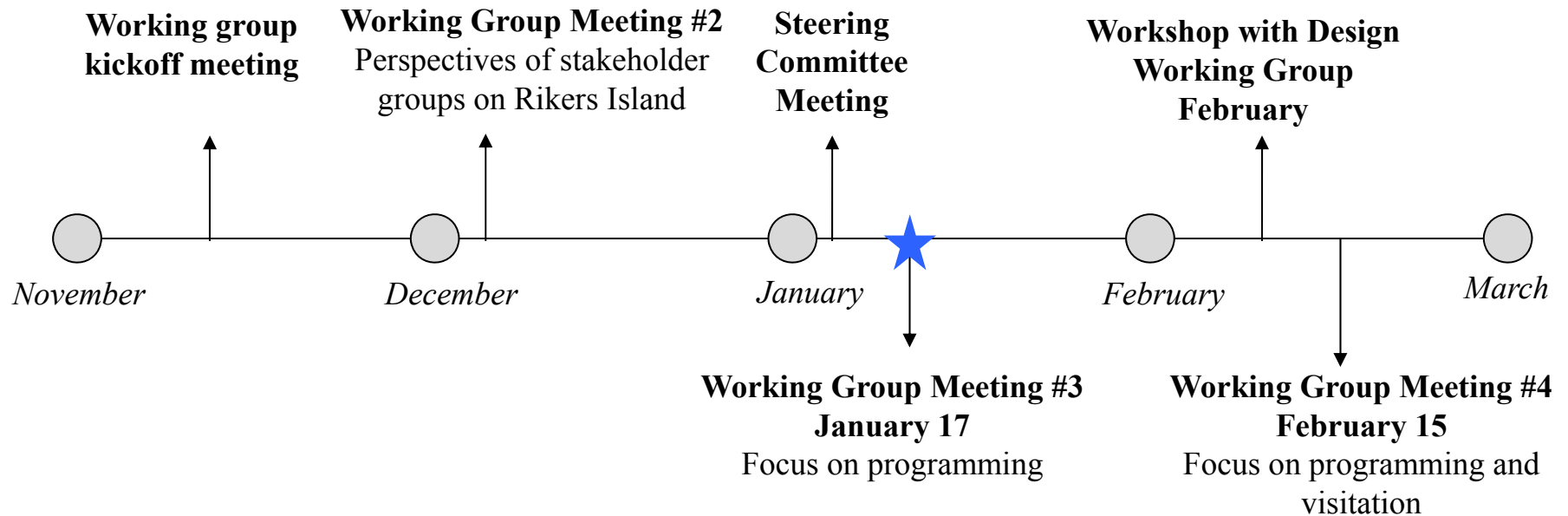
Danielle Spina, Director of the SMART Program, Housing Works, Inc.

IMPLEMENTATION HIGHLIGHT

In the last month, the Mayor’s Office of Criminal Justice selected the eight non-profits who will provide re-entry services for everyone leaving city jails beginning in 2018. These networks will provide people returning to the community with help enrolling in benefits, finding employment and housing, and connecting to healthcare. Additionally, these providers will offer everyone leaving jail after serving a city sentence short-term transitional employment as part of the Jails to Jobs initiative.

The complete list of selected providers is Housing Works, Fedcap, Fortune Society, Friends of Island Academy, Greenhope Services for Women, Osborne Association, Samaritan Daytop Village, and Women’s Prison Association. These providers will be creating service networks through partnerships with a wide array of subcontractors, including the Center for Employment Opportunities and Exodus Transitional Community.

Anticipated meeting schedule



Focus of our work

Our focus in the months ahead

Q1
Programming

Q1
*Design Principles
Measuring Wellbeing*

Q1
*Visitation and
Transportation*

Q2
*Visitation and
Transportation*

- Actions to strengthen current programming
- Contribute to design principles for the future jail system, including programming
- Identify and implement quick wins to positively impact culture on Rikers today
- Understand the problem
- Develop potential solutions
- Support DOC in implementing planned improvements
- Propose new solutions for implementation
- Begin implementation

Plan for design principles workshop

Pre-workshop prep

- Review and synthesize existing ideas about the most important design attributes of a new jail system in NYC.
- Use existing material to develop a pre-workshop survey to gather input from participants.

Workshop activities

- Begin with a review of existing material and results of the pre-workshop survey.
- Break out into smaller groups (facilitated by project management staff) to unpack specific topics and develop and prioritize related design principles.
- Report back to the full group and document preliminary principles.

Note: tentative dates for the workshop are February 6, 7, or 8.

Agenda

1. Introductions and updates
2. **Programming**
 - a. Overview of programming on Rikers Island
 - b. Programming research
3. Discussion and next steps

Rikers programming

Rikers Island Facilities

Facility	Year Built	Bed Capacity	Notes	# of programs
AMKC	1977	2,346	Detox Unit, Mental Health Center	13
RNDC	1972	1,023	All 16- and 17- year-olds	13
EMTC	1965	1,647	Sentences of less than 1 year	15
GRVC	1991	883	Includes Punitive Segregation Unit	13
NIC	1935	338	Infirmery; special pops by end of year	4
OBCC	1985	1,212	Includes Enhanced Supervision Housing	9
RMSC	1988	1,287	Women's only facility	28

Rikers programming

Borough Facilities

Facility	Year Built	Bed Capacity	Notes	# of programs
BKDC	1957 (renovated 2011-13)	688	Most undergoing intake process or facing trial in Kings/Richmond County.	4
MDC	1983/1990	876	North and South Towers—most undergoing intake process or facing trial in New York County. Includes special populations.	27
VCBC	1992	760	Detention facility for intake processing for both Bronx and Queens.	7

Rikers programming

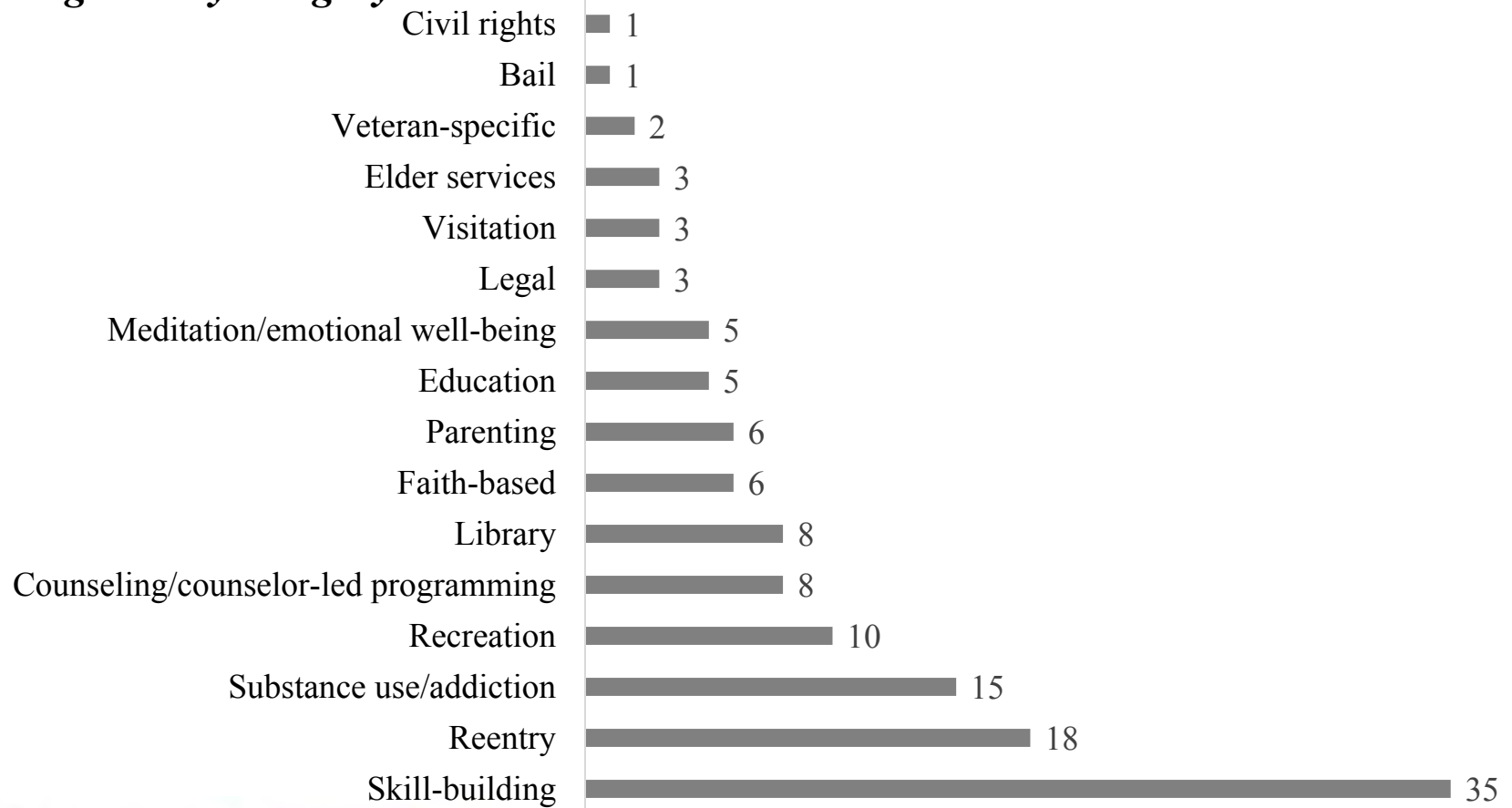
Categorization of programs and goals

Skill-building	Parenting	Meditation/emotional well-being
Reentry	Faith-based	Veteran-specific
Substance use / addiction	Education	Civil rights
Recreation	Legal	Bail
Library	Elderly	Mental health*
Counseling/counselor-led programming	Visitation	Medical*

*Four medical and mental health services were included in the data set; as they are not programs, they are not included in the following analysis.

Rikers programming

Programs by category



Rikers programming

Zoom in on skill-building

Art Club

IDOLS (Individuals Determined to Overcome Life Struggles)

SMART: Samaritan Daytop Village

Art Competition

Individuals 2 Individuals

SOCA Dance class

Barbershop Skills

Manhattanville College

Spanish Debate Project

Creative Arts

Masters Chess

Stella Adler Acting Studio

Creative Writing

Music Studio Expression

Steve & William Ladd

Debate Team

NY Writers Coalition Creative Writing

Tablet Programming- NIC Main

DeFy Ventures

Tribeca Film Institute

Food Protection Course

Paws of Purpose

VCBC Barbershop Training

Fresh start Culinary arts class- Osborne Association

Reading and Writing (ESL class)

Course - Licensed Instructor Todd Robinson

Horticulture

Rikers Island Debate Project

Program spotlight: horticultural therapy



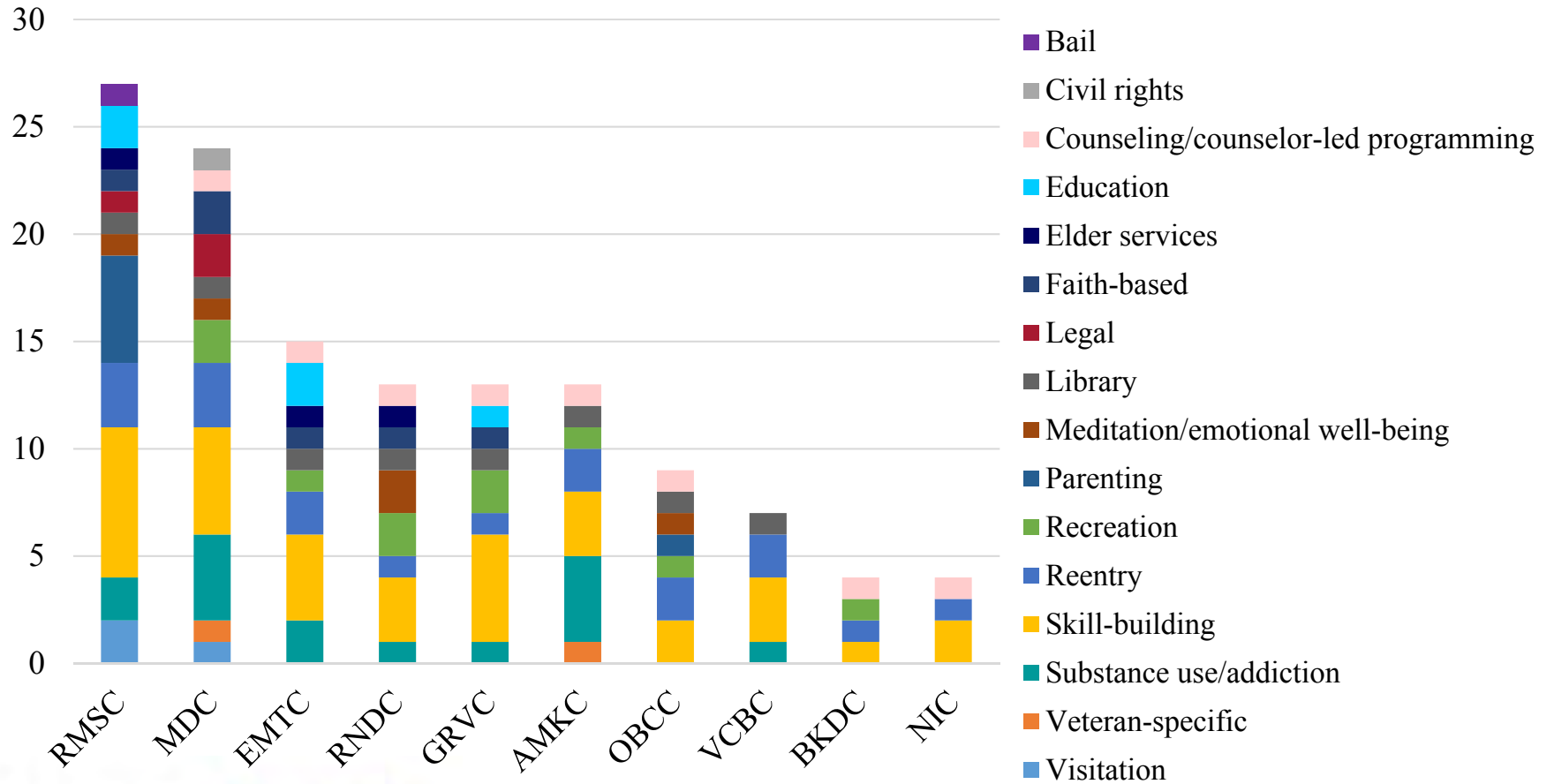
Project: GreenHouse: Rikers/GreenBox Machine
Date: Ongoing
Design: The Horticultural Society of New York
Location: New York City

Area: 2 acres
Beds: N/A
Programs: by trained horticultural therapists
Scale: N/A

Court: N/A
Other: Therapeutic curriculum guides each participant's personal growth plan, giving them opportunity.

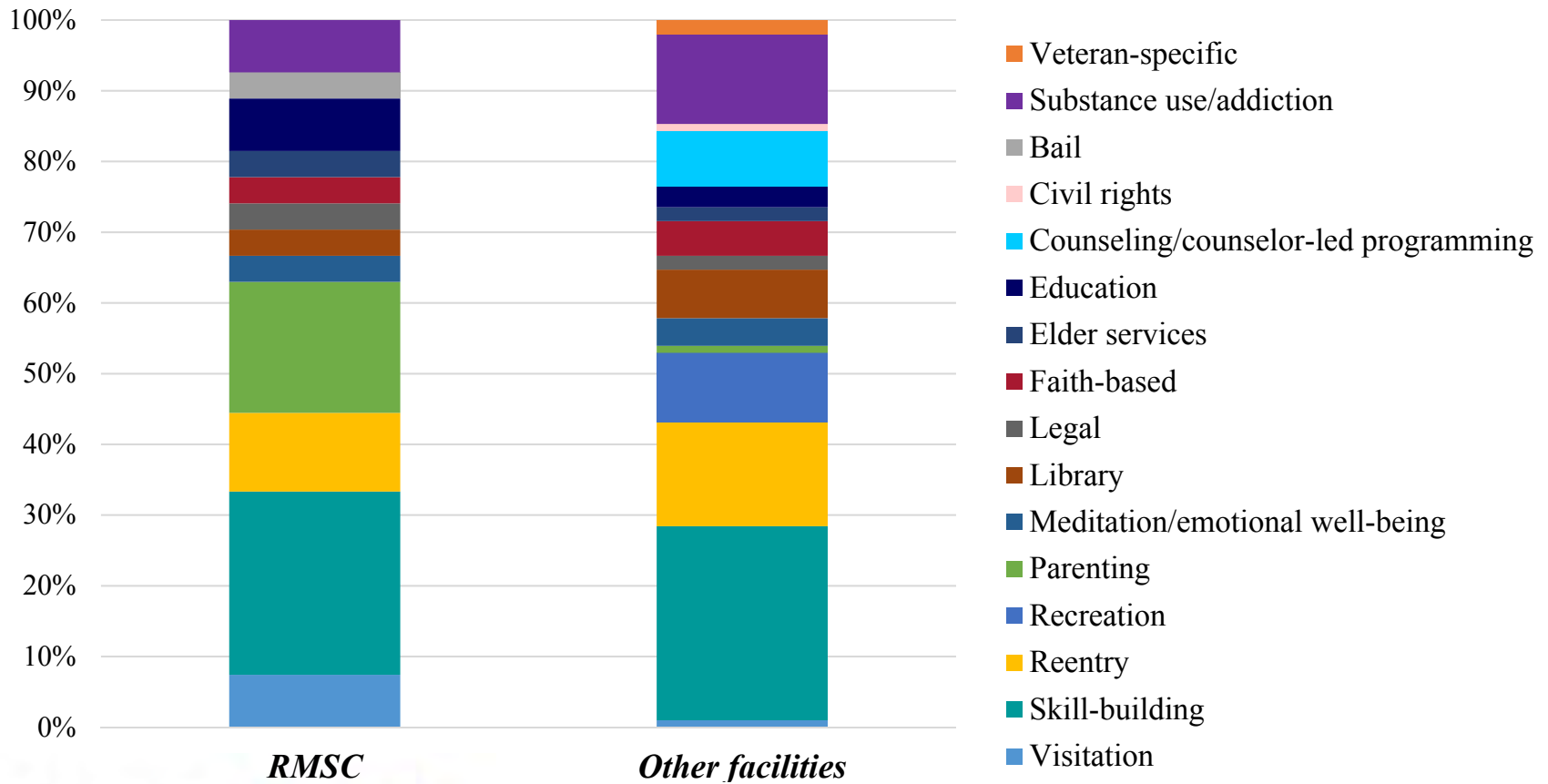
Rikers programming

Programs by facility and type



Rikers programming

Zoom in on RMSC



Rikers programming

Adult Programming participation rates for SMART/I-CAN programming

Facility	Average Rate by Provider (December 2017)
MDC	<i>Fortune: 47%; Housing Works: 40%</i>
VCBC	<i>Osborne: 68%; SDV: 22%</i>
GRVC	<i>Fortune: 64%; Osborne: 72%</i>
OBCC	<i>FedCap: 21%</i>
RMSC	<i>Fortune: 36%; Osborne: 35%; Greenhope: 34%</i>
RNDC	<i>FedCap: 24%</i>
AMKC	<i>Fortune: 79%; Osborne: 79%; DOC (IDOLS): 69%; Samaritan Village: 27%</i>
EMTC	<i>Fortune: 62%; Osborne: 55%; STRIVE: 27%</i>
BKDC	<i>Housing Works: 43%</i>

Rikers programming

Adult Programming participation rates for SMART/I-CAN programming

Provider	Average participation rate
Fortune	58%
Osborne	62%
Housing Works	42%
FedCap	23%
Greenhope	34%
Samaritan Village	25%
STRIVE	27%
DOC (IDOLS)	69%

Rikers programming

Limitations and challenges

- Unpredictable lengths of stay
- Daily operations and programming interruptions
- Built environment
- Adequate programming capacity
- Incentives for participation

Agenda

1. Introductions and updates
 1. Updates from MOCJ
 2. Looking ahead
2. Programming
 - a. Overview of programming on Rikers Island
 - b. **Programming research**
3. Discussion and next steps

Programming research

Many jail jurisdictions face the challenge of short and/or unpredictable lengths of stay.

<i>FY2017 Statistics</i>	
Average Daily Population	9,684
Total discharges	58,981
Discharged to NYSDOCCS	16.6%
Discharged to community	76.2%
Average length of stay	63.3 days
Detained for four or fewer days	34.1%
Detained for three months or more	18.4%

Programming research

The stated goals of jail programming in other jurisdictions focus on public safety and engaging people in pro-social activity in custody and upon release to the community.

Examples include:

- “Enhance safety and order in the jails...and make inmates more productive upon release.” (Washington County)
- “Programming that allows inmates to deal with the issues that landed them in jail in the first place.” (Wayne County)
- “Engage in meaningful pro-social ways while incarcerated...and prepare individuals for reintegration into the community.” (Cook County)
- “Helping incarcerated individuals gain knowledge, education, awareness, and skills to grow independently and collectively.” (Boulder County)

Programming research

The built environment has a significant impact on programming.



Project: Juvenile Detention Educational Facility

Date: 2017

Design: Combas Architectes

Location: Marseilles, France

Area: 26,370 sq. ft.

Beds: 20

Programs: educational

Scale: Suburban campus

Programming research

The built environment has a significant impact on programming.



Project: Halden Fengsel

Date: 2010

Design: Erik Møller and HLM Architects

Location: Østfold, Norway

Area: 522,720 sq. ft.

Beds: 251

Programs: Art spaces

Scale: Suburban campus

Notes: Inmates sell objects made in the ceramic studio through a prison-sponsored website

Programming research

The built environment has a significant impact on programming.



Project: Recipe for Change

Date: Ongoing

Design: Chef Bruno Abate

Location: Chicago, IL

Notes: Inmates gather three times a week; other inmates buy pizza; over 80 inmates have participated

Programming research

Normalizing recreational time is a major goal in program design.



- Sports
- Urban farming
- Shakespeare
- Creative Writing
- Art
- Yoga

Project: Halden Fængsel
Date: 2010
Design: Erik Møller and HLM Architects
Location: Østfold, Norway

Area: 522,720 SqFt
Beds: 251
Programs: Art spaces
Scale: Suburban, campus

Court: None, Prison
Other: Known as a world-wide best practice.

Programming research

Programming is not one-size-fits-all; many jurisdictions balance mandated and individualized programming.

Examples of mandated programming in NYC:

- Law library: “Each facility shall maintain a properly equipped and staffed law library. (1) The law library shall be located in a separate area sufficiently free of noise and activity and with sufficient space and lighting to permit sustained research. (2) Each law library shall be open for a minimum of five days per week including at least one weekend day.”
- Minimum recreation time: “Recreation periods shall be at least one hour; only time spent at the recreation area shall count toward the hour. Recreation shall be available seven days per week in the outdoor recreation area, except in inclement weather when the indoor recreation area shall be used.”
- Religious accommodations/services: “Prisoners have an unrestricted right to hold any religious belief, and to be a member of any religious group or organization, as well as to refrain from the exercise of any religious beliefs.”

Programming research

Programming is not one-size-fits-all; many jurisdictions balance mandated and individualized programming.

Examples of individualized programming:

- Offense-specific group or individual counseling: Felony Domestic Violence Transition Counseling; Jail-based Misdemeanor Domestic Violence (MDV)
- Intensive cognitive restructuring and skill building programs: Healthy Relationships, Victim impact, Learning from Trauma
- Life skills: Parenting: F.O.C. Parental Responsibility and Financial Literacy Program, Computer skills, finding and keeping a job, Credit recovery, budgeting
- Gender-specific: Women's groups on anger management and domestic violence prevention
- Age-specific: Allied-youth group, Seniors club

Agenda

1. Introductions and updates
2. Programming
3. **Discussion and next steps**

Discussion

- What can we do as a working group to strengthen programming in the jail system today?
- What are the goals for programming on Rikers Island? What are the most important programming principles for the future jail system?
- Do the goals change for special populations?
- What are the gaps in programming that are most important to address?
- How can we develop a better understanding of what kinds of programming are most valuable to inmates?
- What are some of the creative ways we can increase inmate participation in programming?