



Justice Implementation Steering Committee

January 31, 2018



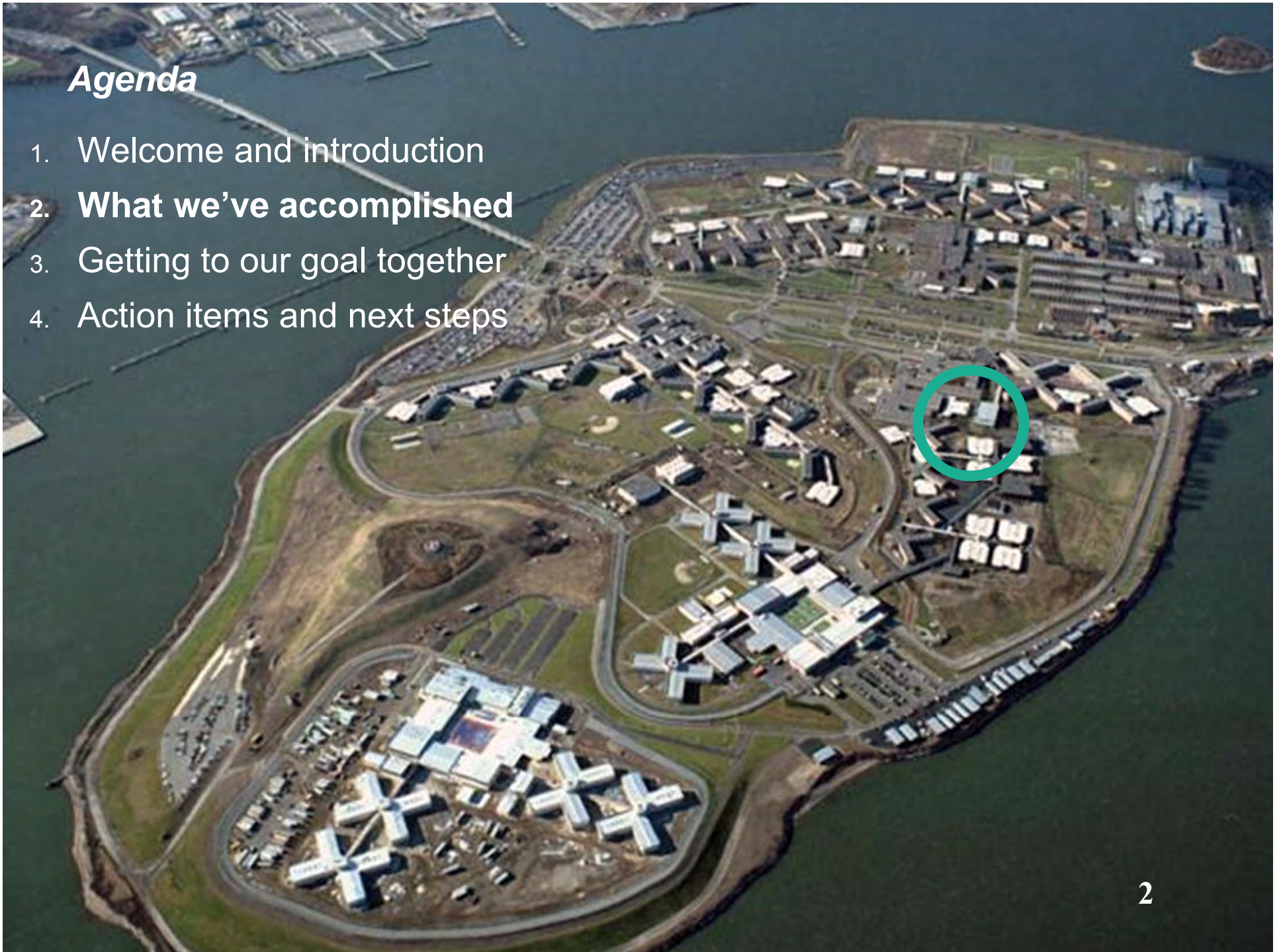
An aerial photograph of a large, modern campus, likely a university or research facility, situated on a peninsula or near a waterfront. The campus features numerous large, interconnected buildings with flat roofs, some in shades of blue and white. There are extensive green spaces, including lawns and fields, interspersed among the buildings. A winding road or path runs through the campus. The waterfront is visible on the left and right sides, with some docks and smaller structures. The overall layout is organized and spacious.

Agenda

1. **Welcome and introduction**
2. What we've accomplished
3. Getting to our goal together
4. Action items and next steps

Agenda

1. Welcome and introduction
2. **What we've accomplished**
3. Getting to our goal together
4. Action items and next steps



Smaller, Safer, Fairer



Administration for Children's Services

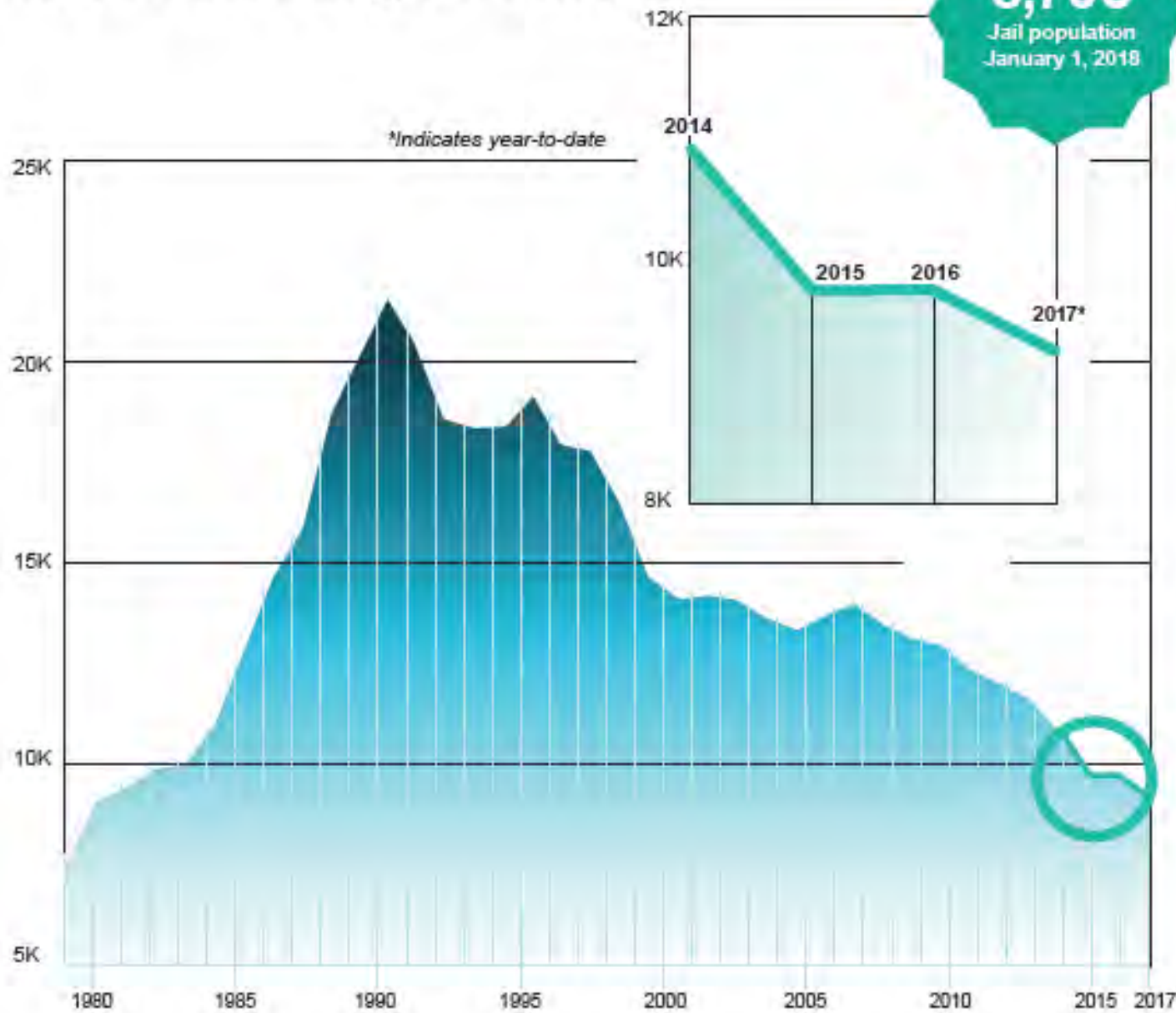




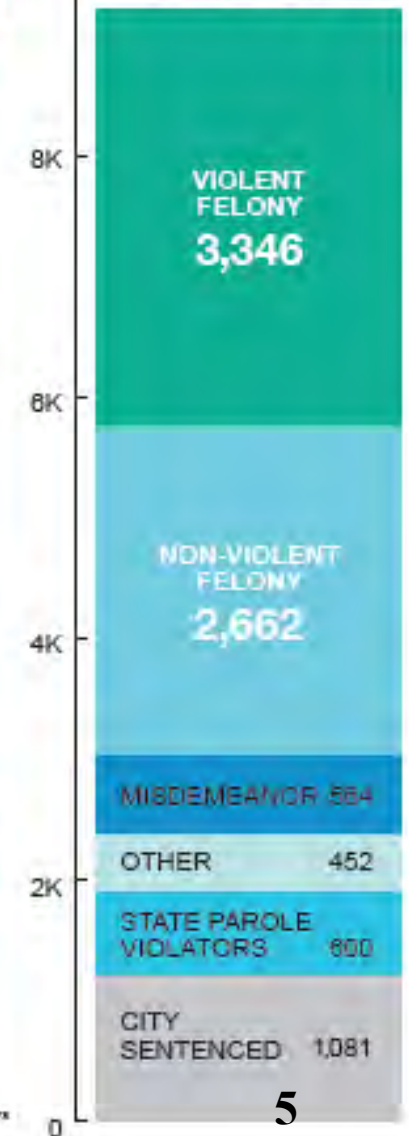
What we've accomplished and the road ahead

- New York City's jail population is *under 9,000* for the first time in 35 years.
- New York City announced that, due to the reductions in the number of people in jail, it is able to close a facility on Rikers Island.
 - o GMDC will be closed by summer 2018.
- New York City announced its plans to transfer adolescents off of Rikers Island.
 - o The City has proposed to use Crossroads, Horizon, and OCFS Facility Ella McQueen for intake.
- The City has selected a consultant, Perkins Eastman, to develop the master plan for a borough based jail system off Rikers Island.
 - In an upcoming workshop, the Design and Culture Change groups will develop design principles to inform the work of the consultant.

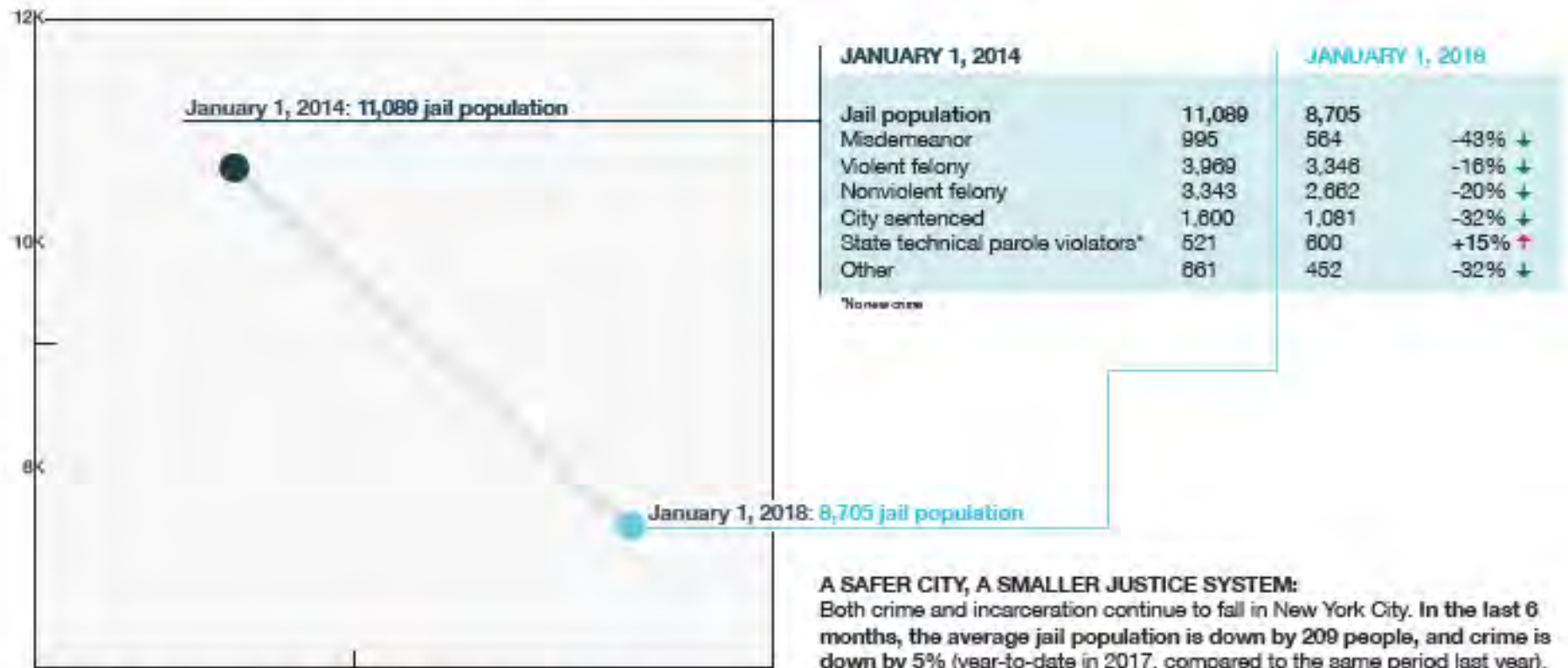
Average Daily Jail Population in New York City, 1980-2017



Snapshot of People in Jail in New York City on January 1, 2018



Snapshot of the Daily Jail Population: January 1, 2014 vs January 1, 2018



The Mayor's Office of Criminal Justice analysis of New York City Department of Correction data, Jan 2018.

NYPD Compstat data 2017.

-48%

in adolescents
(16- & 17-year-olds)
in custody

-68%

of people in
custody with bail of
\$2000 or less

-18%

in people in
custody for longer
than one year

-36%

in young adults
(18 to 21-year-olds)
in custody

KEY TRENDS
(December 2015-December 2017)

+15%

in State technical
parole violators
(January 1st 2014-
January 1st 2018)

Working Group Progress

Jail Population

- **Meeting 1**
November 6, 2017
Jail population overview and review of existing strategies
- **Meeting 2**
November 29, 2017
Focus on risk assessment
- **Meeting 3**
January 12, 2018
Focus on risk assessment
Focus on parole violator and city sentenced populations

Design

- **Meeting 1**
November 6, 2017
Jail population overview and review of Rikers facilities
- **Meeting 2**
November 30, 2017
Best practices in facilities design
- **Meeting 3**
January 10, 2018
Best practices in facilities design

Culture Change

- **Meeting 1**
November 8, 2017
Jail population overview and review of current workforce on Rikers
- **Meeting 2**
December 14, 2017
Perspectives of key groups on Rikers
- **Meeting 3**
January 17, 2018
Focus on understanding current programming and best practices in jail programming


Working Group Milestones

	Q1 2018	Q2 2018	Q3 2018
<i>Jail population reduction</i>	<ul style="list-style-type: none"> • Focus charge • Understand the incarcerated population • FTA tool implementation 	<ul style="list-style-type: none"> • Strategies and legislative proposals: parole violators and city sentenced • Analysis of other population reduction strategies 	<ul style="list-style-type: none"> • Implementation of parole and city sentenced strategies • Implementation of other population reduction strategies
<i>Design</i>	<ul style="list-style-type: none"> • Focus charge • Look elsewhere and learn • Identify the key attributes of future jails 	<ul style="list-style-type: none"> • Refine design principles to inform CPSD study • Focus on populations with special needs • Rikers today (visitation, transportation, etc.) 	<ul style="list-style-type: none"> • Implementation of new visitation and transportation practices • Support the CPSD study • Use of underutilized spaces on Rikers
<i>Culture change</i>	<ul style="list-style-type: none"> • Focus charge • Perspectives of incarcerated people, staff, and visitors • Inventory of programming on Rikers • Identify the key attributes of future jails 	<ul style="list-style-type: none"> • Action subcommittee to implement program improvements • Measures of well-being • Qualitative research • Improvements to visitation 	<ul style="list-style-type: none"> • Implementation of new visitation and transportation practices • Implementation of programming initiatives


An aerial photograph of a large, modern campus, likely a university or research facility, situated on a peninsula or waterfront. The campus features numerous large, interconnected buildings with flat roofs, interspersed with green lawns, parking lots, and winding roads. The waterfront is visible on the left and bottom edges of the image.

Agenda

1. Welcome and introduction
2. What we've accomplished
3. **Getting to our goal together**
4. Action items and next steps



What are you and your organization doing today that contributes to closing Rikers?

A group of people are gathered in a meeting room with yellow walls and whiteboards. They are seated around tables, engaged in discussion. The room has a modern, open-plan feel with exposed ceiling pipes and track lighting. The text is overlaid in a large, white, sans-serif font.

Where does our work overlap as a group? Are there opportunities for us to work together?



Are there new ideas or questions you would like us to explore?

An aerial photograph of a large, modern campus, likely a university or research facility, situated on a peninsula or near a waterfront. The campus features numerous large, interconnected buildings with flat roofs, some in shades of blue and white. There are extensive green spaces, including lawns and fields, interspersed among the buildings. A winding road or path runs through the campus. The waterfront is visible on the left and right sides of the image, with some docks and smaller structures. The overall layout is organized and spacious.

Agenda

1. Welcome and introduction
2. What we've accomplished
3. Getting to our goal together
4. **Action items and next steps**