

BEYOND RIKERS

TOWARDS A BOROUGH-BASED JAIL SYSTEM



NYC
Office of the Mayor



AGENDA

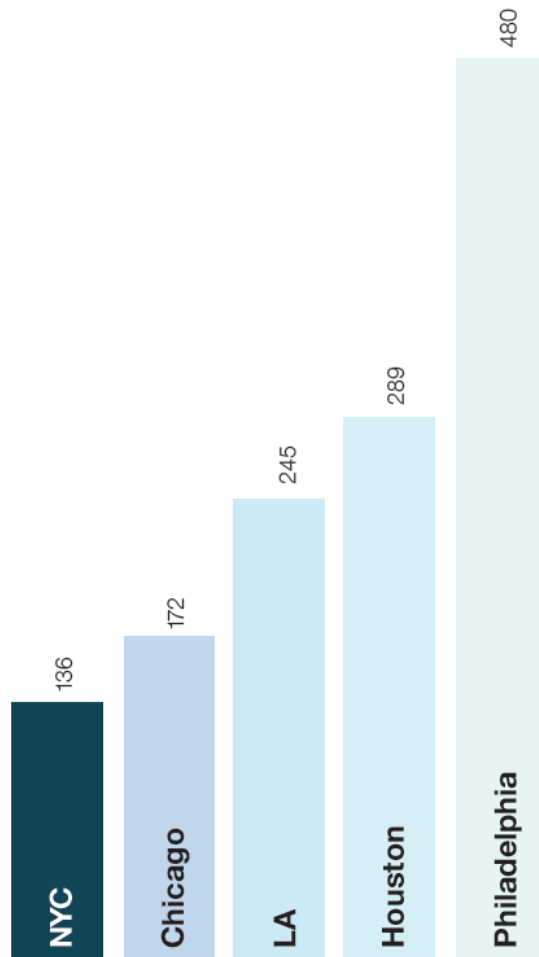
1. Introductions
2. Jail Population Reduction
3. Borough-Based Jail System Update
4. Looking Ahead

A map of Maryland with a yellow dot in the central region. The map shows the state's outline and major water bodies like the Chesapeake Bay and the Potomac River. The text "JAIL POPULATION REDUCTION" is overlaid on the right side of the map.

JAIL POPULATION REDUCTION

NEW YORK CITY HAS THE LOWEST RATE OF INCARCERATION

OF ALL LARGE CITIES IN THE U.S.



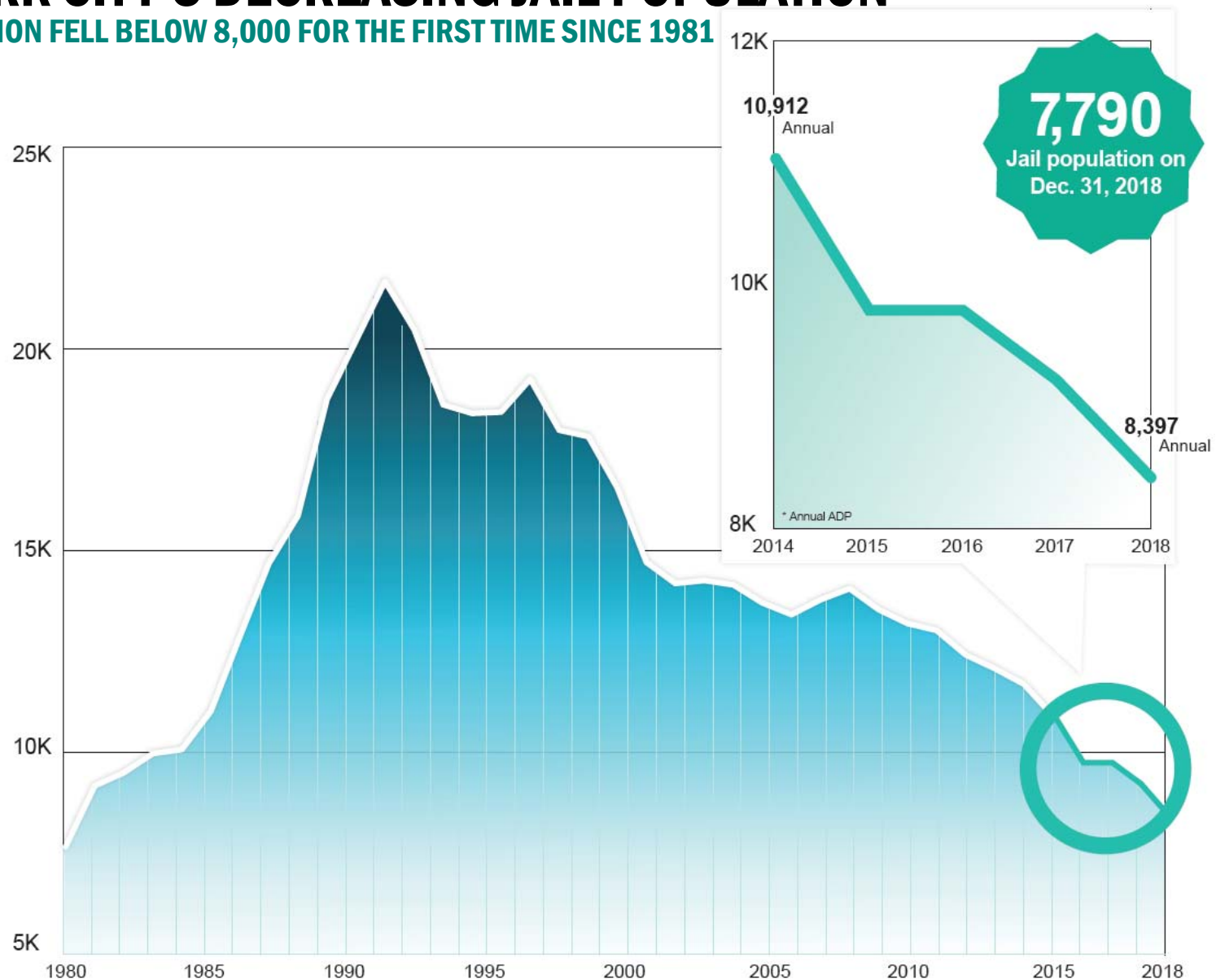
Approx. rate of incarceration per 100K people

New York City the safest city with the lowest rate of incarceration of all large cities in the United States

- 30% decline in the jail population since the Mayor first took office
- 46% decline in jail admissions
- 14% reduction in index crime
- Lowest jail population since 1980

NEW YORK CITY'S DECREASING JAIL POPULATION

JAIL POPULATION FELL BELOW 8,000 FOR THE FIRST TIME SINCE 1981



NEW YORK CITY'S DECREASING JAIL POPULATION

ALL POPULATIONS, EXCEPT STATE PAROLE VIOLATORS, HAVE DECREASED

**Key trends:
2013-2018**

-65%

in people held
pretrial with bail
less than \$2000

-53%

in young adults
(18 to 21-year-olds)
in custody

-46%

in people held on
a misdemeanor

-44%

in people in
custody for one
week or less

-40%

in people held
pretrial with bail
between
\$2000-\$5000

-41%

in people serving
a city sentence

-36%


women
in custody

-23%

in people in
custody for longer
than one year

+8%

in people held on
a state technical
parole violation

A map of New Jersey with a yellow dot in the northern part of the state, indicating the location of the jail system plan. The map shows the state's outline and major water bodies like the Delaware River and the Atlantic Ocean.

BOROUGH-BASED JAIL SYSTEM PLAN

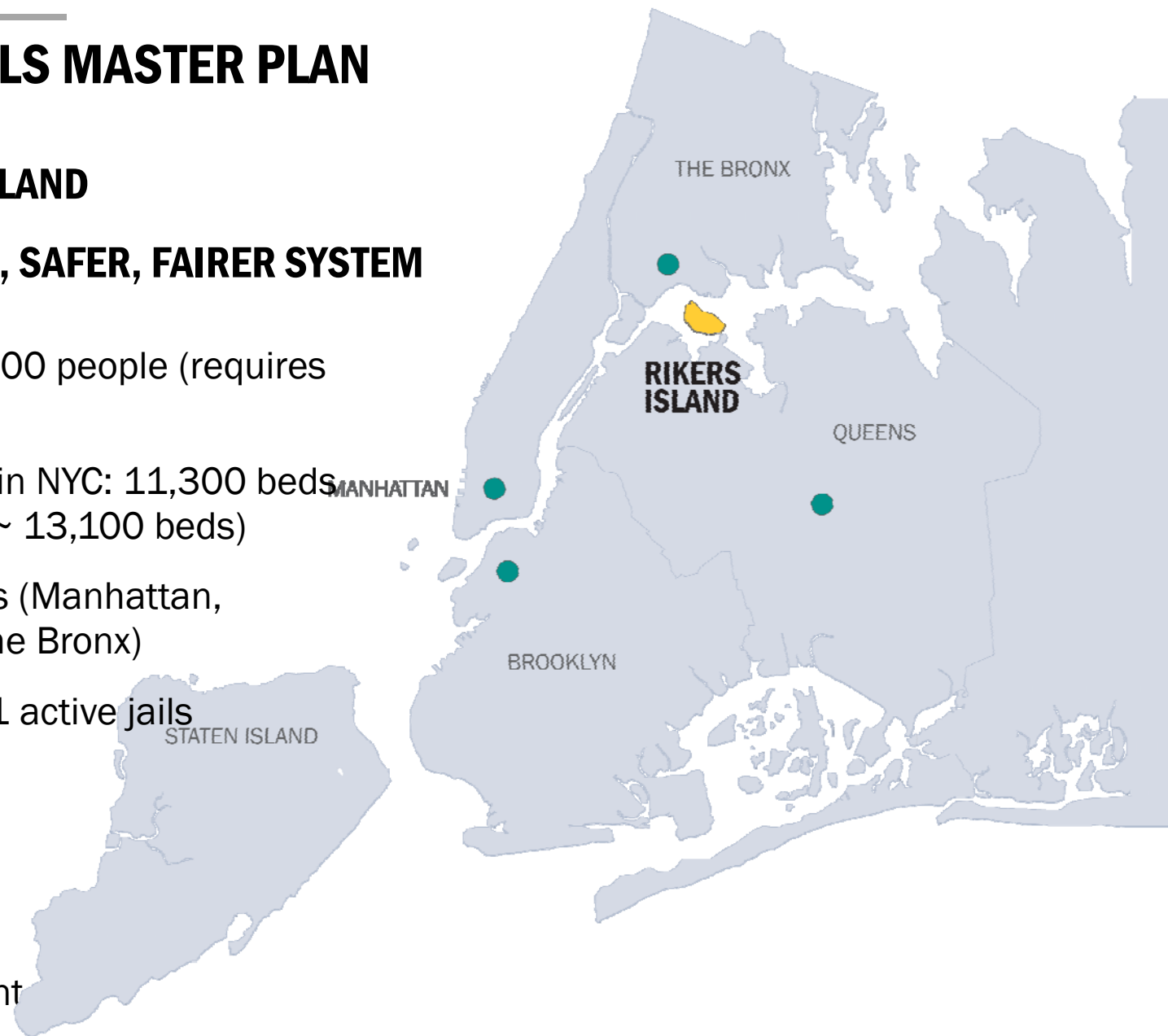
BOROUGH-BASED JAILS MASTER PLAN

PROGRAM SUMMARY

CLOSE JAILS ON RIKERS ISLAND

REPLACE WITH A SMALLER, SAFER, FAIRER SYSTEM THAT WILL HAVE:

- Housing for a total of 5,000 people (requires 6,000 beds)
 - Current jail capacity in NYC: 11,300 beds (pre-GMDC closure: ~ 13,100 beds)
- Four borough-based sites (Manhattan, Brooklyn, Queens, and the Bronx)
 - Currently NYC has 11 active jails
- Evidence-based programming to reduce recidivism
- Focus on reentry and community reengagement



GOALS FOR NEW BOROUGH-BASED JAILS

FAIRER



Rehabilitative facilities designed to improve health, educational, and social outcomes
House people closer to their families and home communities
Provide greater access to social services and community service providers
Fewer families impacted by the criminal justice system

SAFER



Close outdated and poorly designed jails on Rikers Island
Improve lines of sight and safety using a more modern layout
Reduce violence with new procedures, smaller units and better monitoring
Provide quality programming to reduce recidivism

MORE EFFICIENT



Reduce unnecessary case delays which expand jail population and length of stay
Decrease housing and transportation costs through more efficient facilities and transportation routes as well as a smaller jail population
Streamline transfers between jail and courthouses
Improve attorney and service provider access to clients

PROCESS: HOW WE GOT HERE

INPUTS INTO VISION OF BOROUGH-BASED JAILS TO DATE

JUSTICE IMPLEMENTATION TASK FORCE

Design principles for the new facilities were developed by a team of experts, advocates and practitioners

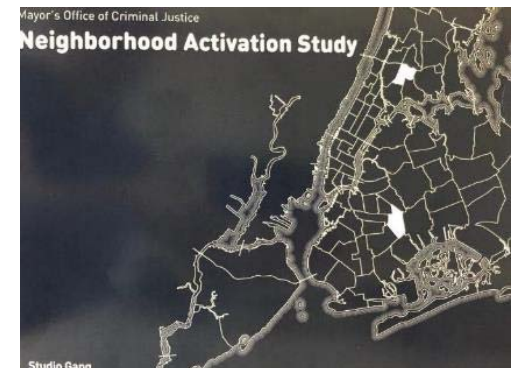
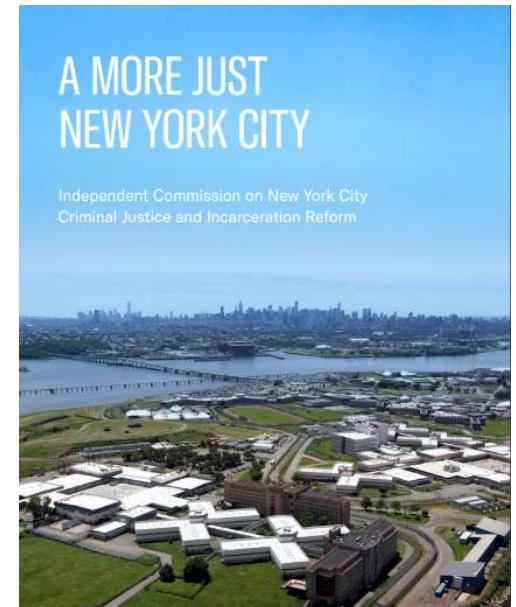
Peer review from design experts (correctional, international and non-correctional experience)

REVIEW OF PAST REPORTS AND COMMUNITY ENGAGEMENT

on borough based jails, including the Justice Hubs proposal from the Lippman Commission

MEETINGS WITH ELECTED OFFICIALS

local Councilmembers, DA's and Courts, Board of Correction, community organizations and focus groups with specific populations



PROCESS: DESIGN WORKING GROUP

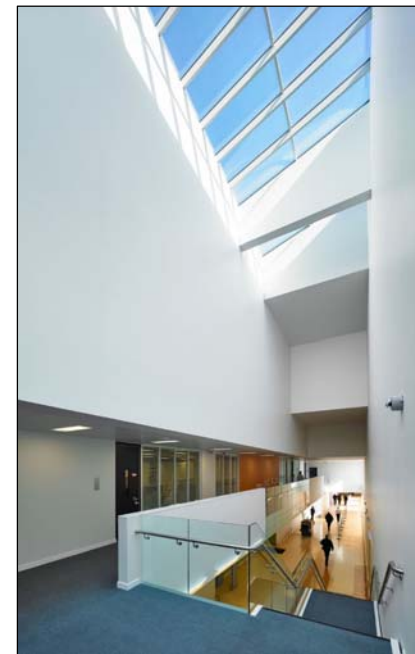
DESIGN PRINCIPLES TO GUIDE MASTER PLAN

JUSTICE IMPLEMENTATION TASK FORCE DESIGN WORKING GROUP CO-CHAIRS

- Margaret Castillo, Chief Architect, NYC Department of Design and Construction
- Rosalie Genevro, Executive Director, The Architectural League
- Purnima Kapur, Executive Director, NYC Department of City Planning *ex-officio*
- Stanley Richards, Executive Director, The Fortune Society
- Feniosky Pena-Mora, Professor, Columbia University

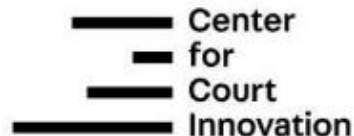
GUIDING PRINCIPLES FOR DESIGN

- Strengthen Community and Family
- Create Engaging Civic Assets
- Ease and Broaden Access to Resources
- Promote Safety and Security
- Design Dignified Environments that Reflect Community Living
- Foster Safe and Positive Social Interaction
- Support Physical Health and Mental Well-Being
- Consider the Unique Needs of Individuals
- Offer Empowering Choices
- Create Positive and Sustainable Environmental Conditions



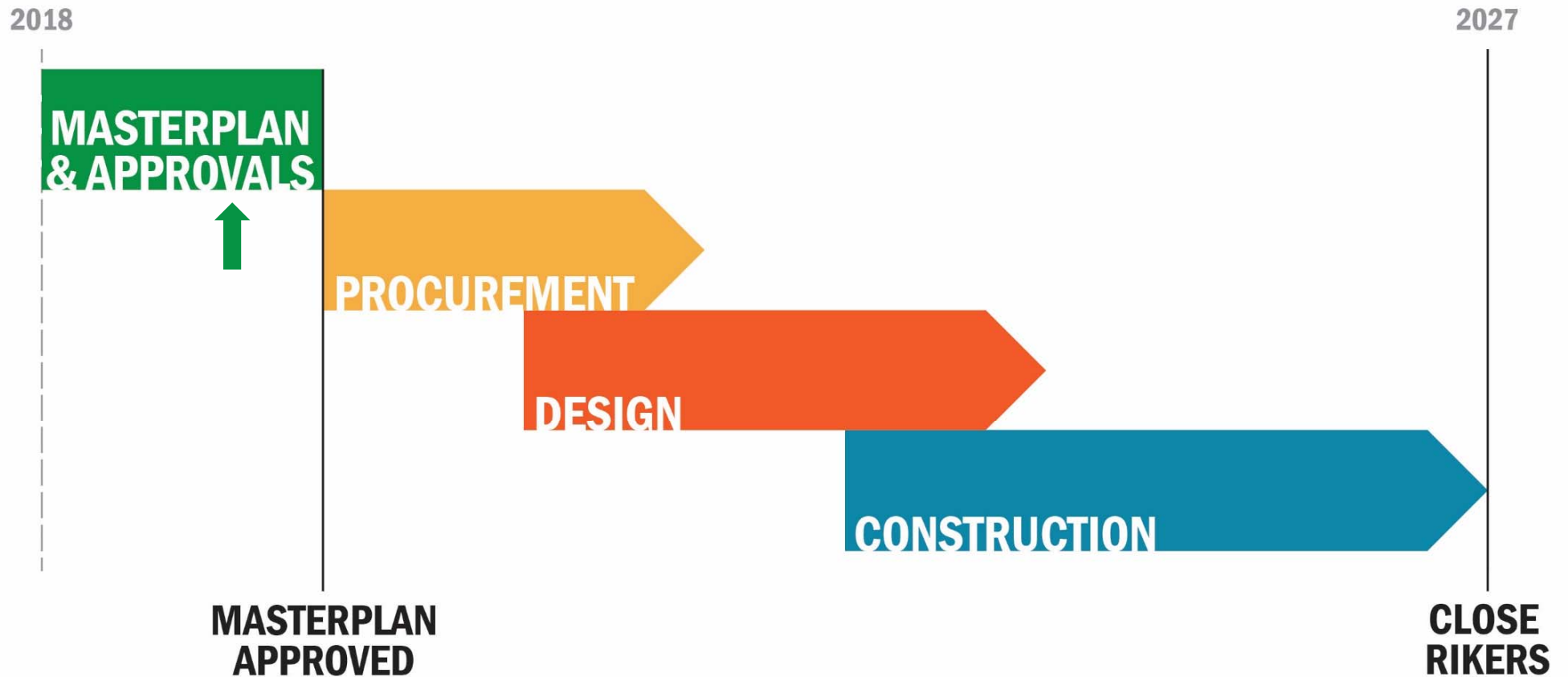
PROCESS: ENGAGING STAKEHOLDERS

INPUTS INTO VISION OF BOROUGH-BASED JAILS TO DATE



PROCESS: SCHEDULE TO CLOSING JAILS

TIMELINE FOR THE BOROUGH-BASED JAIL SYSTEM

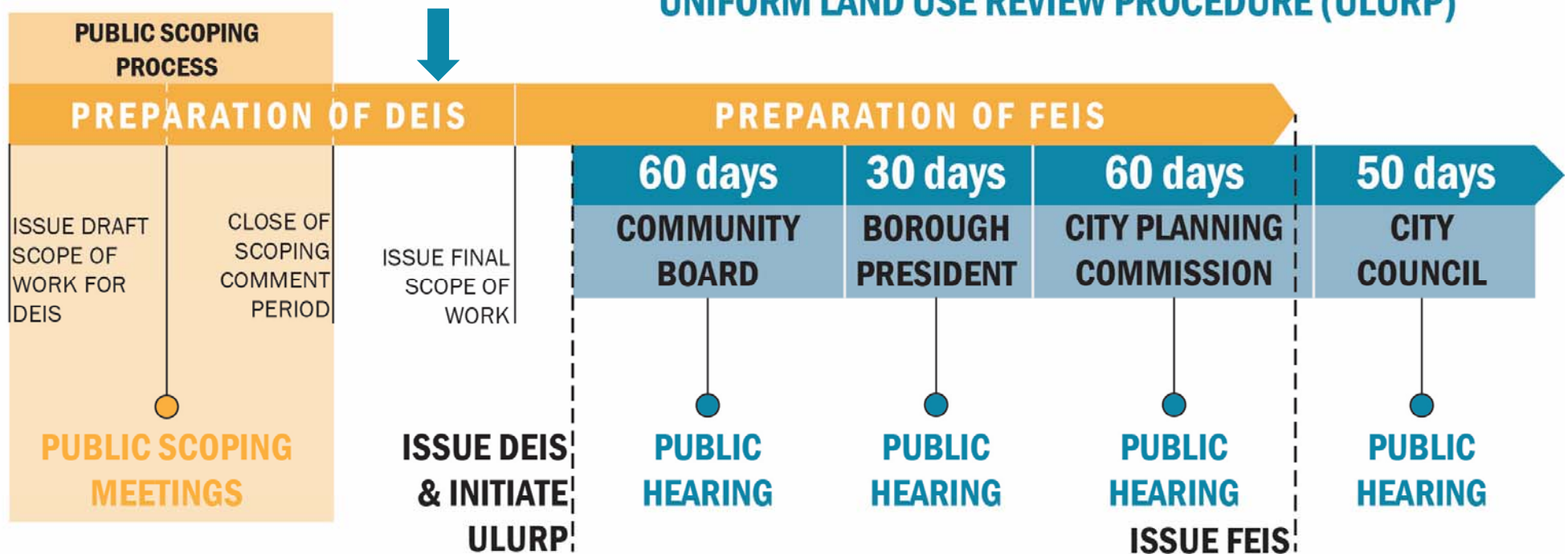


ULURP/CEQR PROCESS

MASTER PLAN NEXT STEPS

CITY ENVIRONMENTAL QUALITY REVIEW (CEQR)

UNIFORM LAND USE REVIEW PROCEDURE (ULURP)

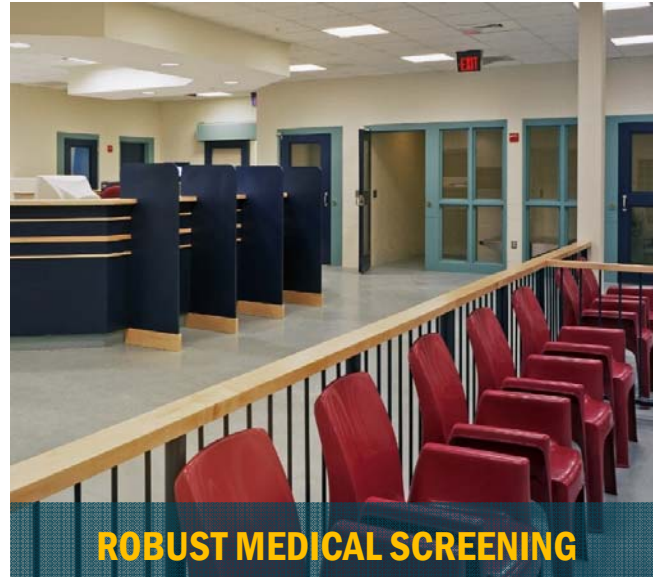
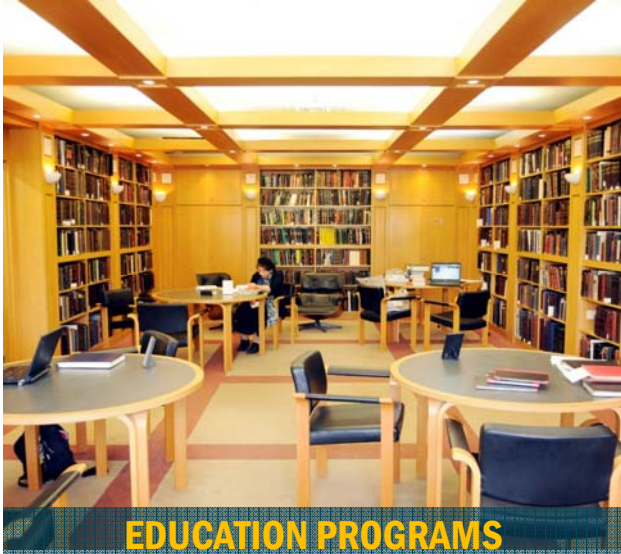


○ Public Meeting/Engagement Opportunity

A map of the Chesapeake Bay area, showing the bay and surrounding land. A yellow dot is placed on the western shore of the bay, near the mouth of the Potomac River. The text "THE PROGRAM" is written in large, bold, white capital letters to the right of the dot.

THE PROGRAM

THE BORO-BASED JAILS PROGRAM: *BETTER OUTCOMES*



DESIGNING A WELCOMING LOBBY

CULTURE CHANGE

NATURAL LIGHT

WORK AREA

VISITING

**AMENITIES
+ SERVICES**

**INFORMATION
HELP DESK**

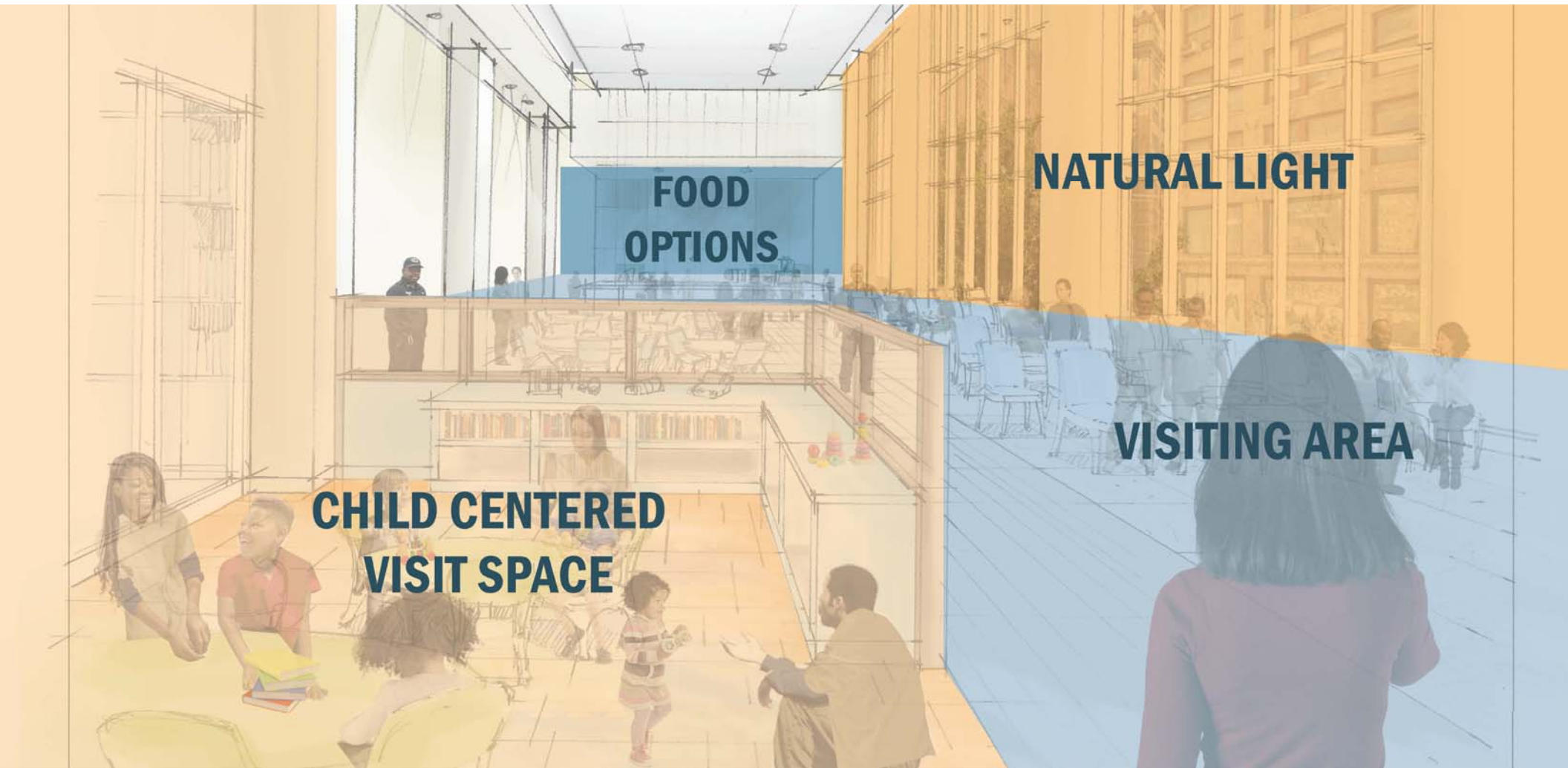
WAITING AREA

**INFORMATION
KIOSKS**

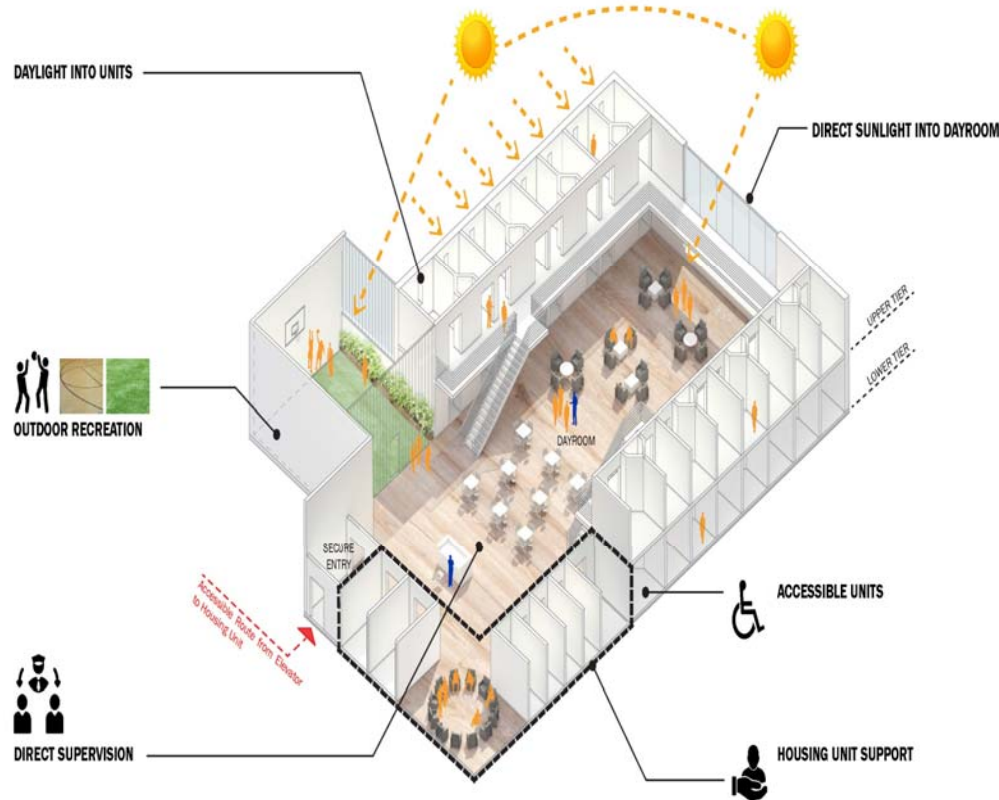


DESIGNING COMFORTABLE VISITING SPACES

CULTURE CHANGE



IMPROVING THE INSIDE AND OUTSIDE EXPERIENCE



SAFE AND EFFICIENT FACILITY

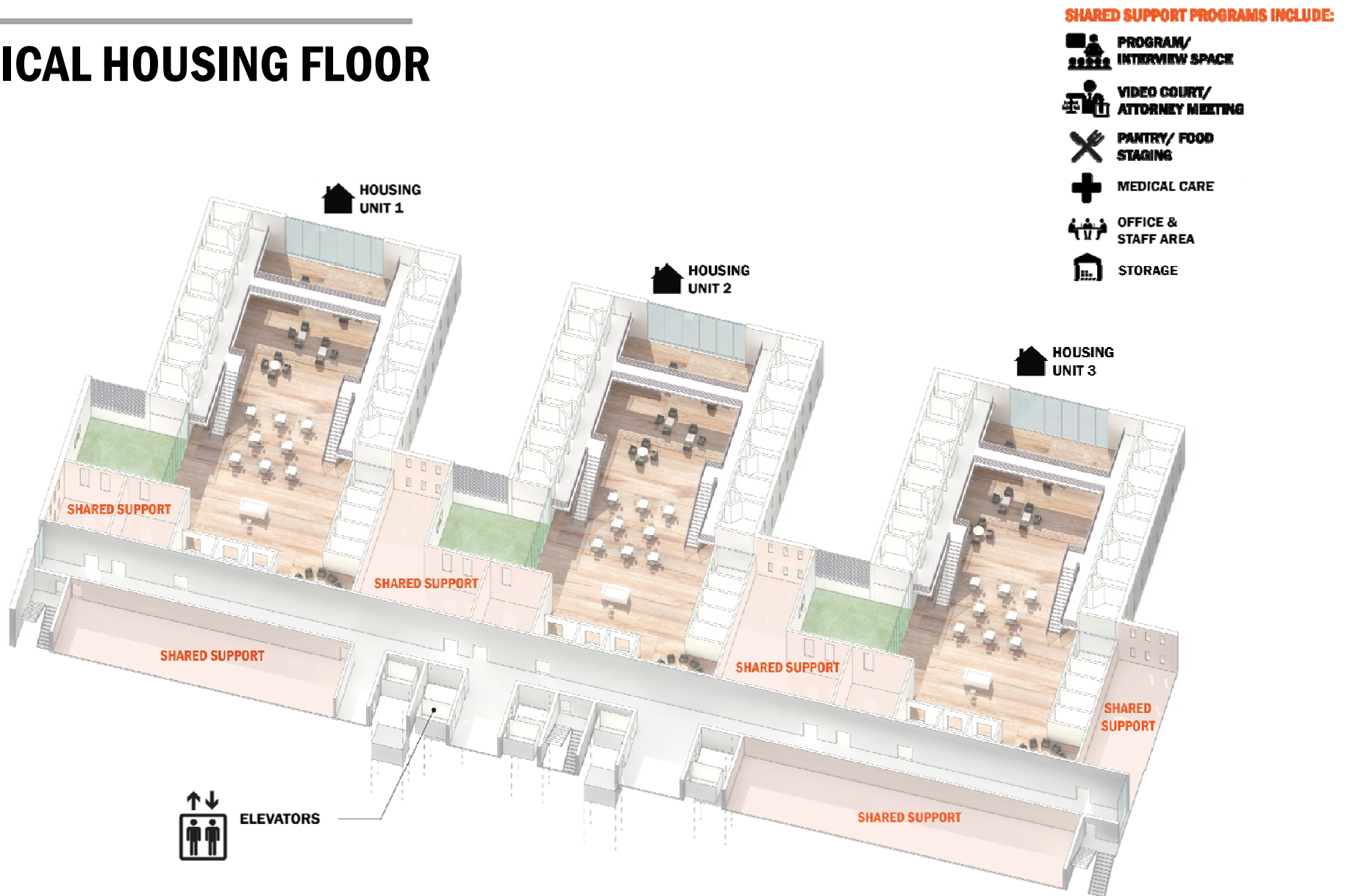
Smaller units to increase safety and maximize tailored programming opportunities



COMPLEMENT THE SURROUNDING NEIGHBORHOOD

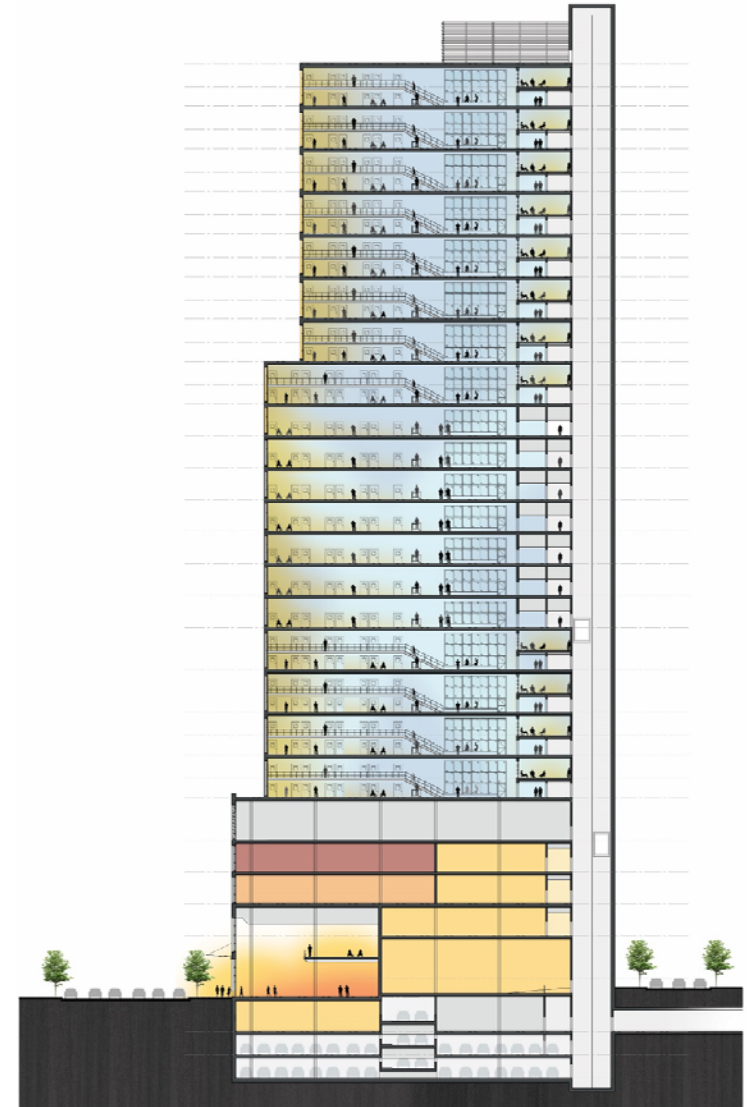
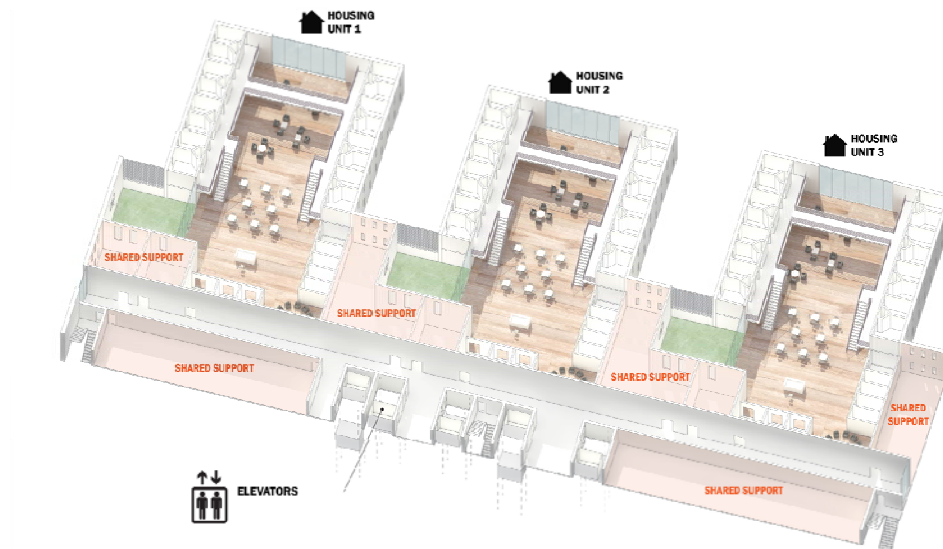
- Include space for community programming
- Active street level frontage to support local development
- Community-influenced exterior design

TYPICAL HOUSING FLOOR



VERTICAL JAIL OPERATIONS

- Self Contained housing units
- Programming moves to detainees
- Podium contains essential programming



FACTORS THAT AFFECT HEIGHT

VARIABLES BELOW HAVE THE POTENTIAL TO REDUCE THE HEIGHT OF THE BUILDINGS

Off Site Technical Parole Violators

Typical Housing Unit Size Increase

Off Site Severely Mentally Ill

Additional Housing Unit Per Floor

Off Site Female Population

Remove Community Space

Centralized Female Pop.
(Equitable Distribution)

Indirect Light Housing Units

Lower Efficiency from 20% to 10%



THE SITES

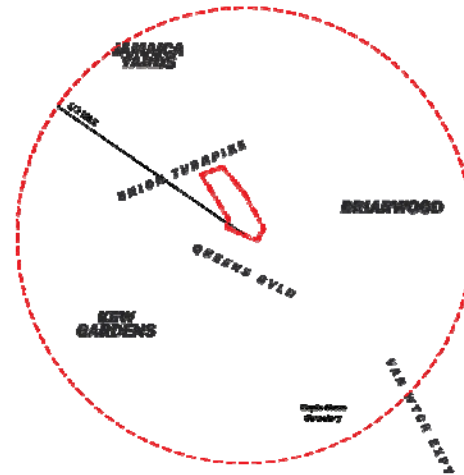
BOROUGH-BASED JAIL LOCATIONS



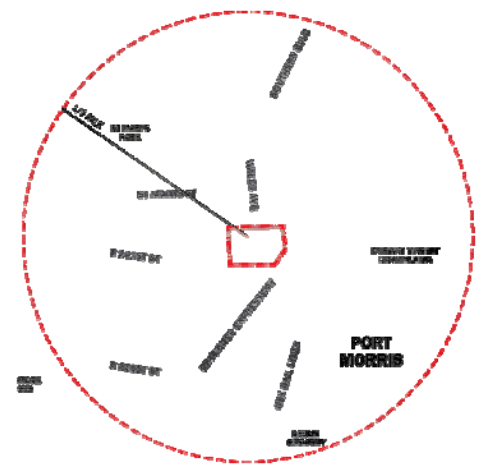
MANHATTAN



BROOKLYN



QUEENS

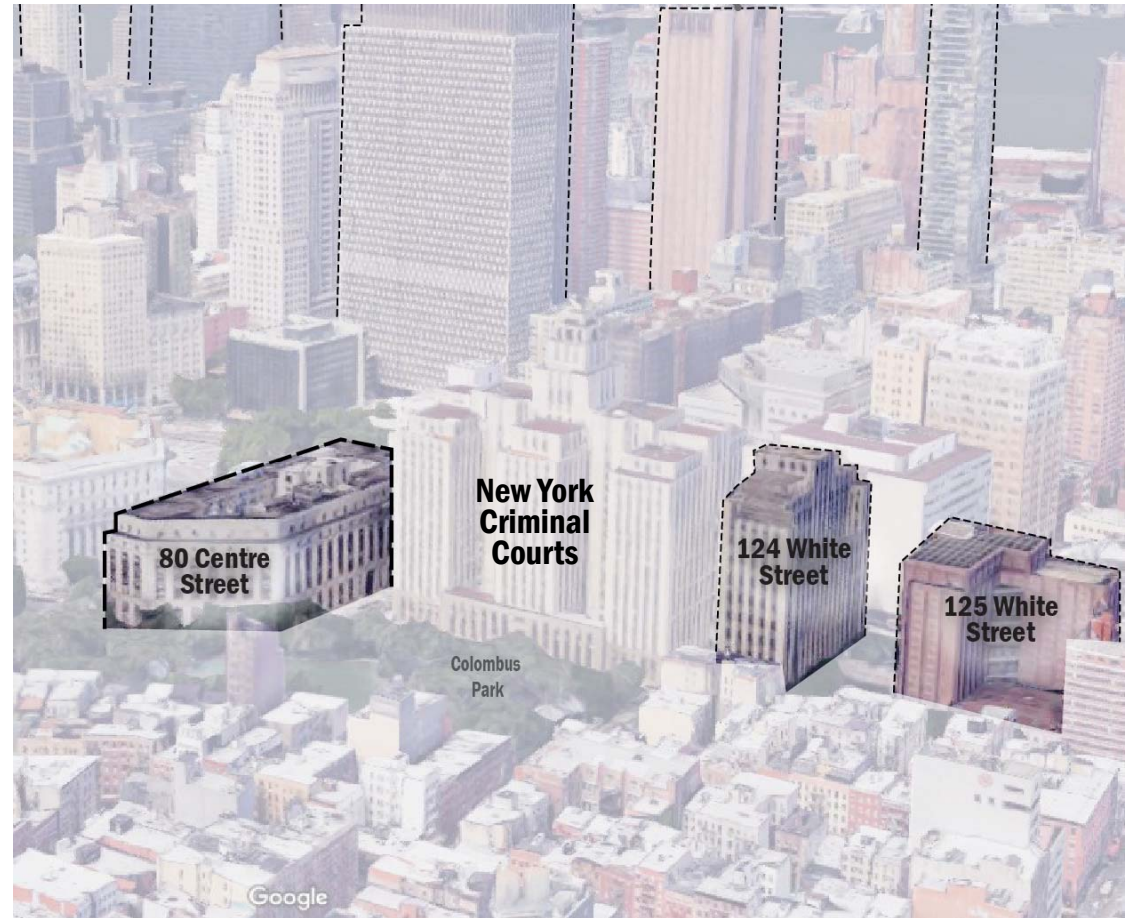


BRONX

PROCESS: SITE SELECTION

SITE SELECTION CRITERIA

- Close to Courthouse
- City-owned property
- Transit-Accessible
- Sufficient site area





A map of New York State with a dark teal background. White lines outline the state's borders and major water bodies. A small yellow-shaded area in the northeast corner of the state represents Manhattan. The word "Manhattan" is written in white, bold, sans-serif font to the right of the yellow area.

Manhattan

THE PROPOSAL - 125/124 WHITE STREET LOCATION



MANHATTAN – SURROUNDING CONTEXT



124-125 WHITE

FIRST FLOOR PLAN

LEGEND:

- 1. PUBLIC ENTRANCE AND LOBBY
- 2. VISITATION
- 7. STAFF SUPPORT
- 9. RELEASE
- 19. K-9 UNIT
- 21. BUILDING SUPPORT
- 22. COMMUNITY SPACE
- CIRCULATION - SECURE
- CIRCULATION - SERVICE
- CIRCULATION - STAFF
- CIRCULATION - STAFF - NON SECURE
- VEHICULAR SALLYPORT
- MECHANICAL





Brooklyn

275 ATLANTIC AVENUE

EDGE BETWEEN LARGE SCALE OF DOWNTOWN AND LOWER RESIDENTIAL SCALE TO THE SOUTH



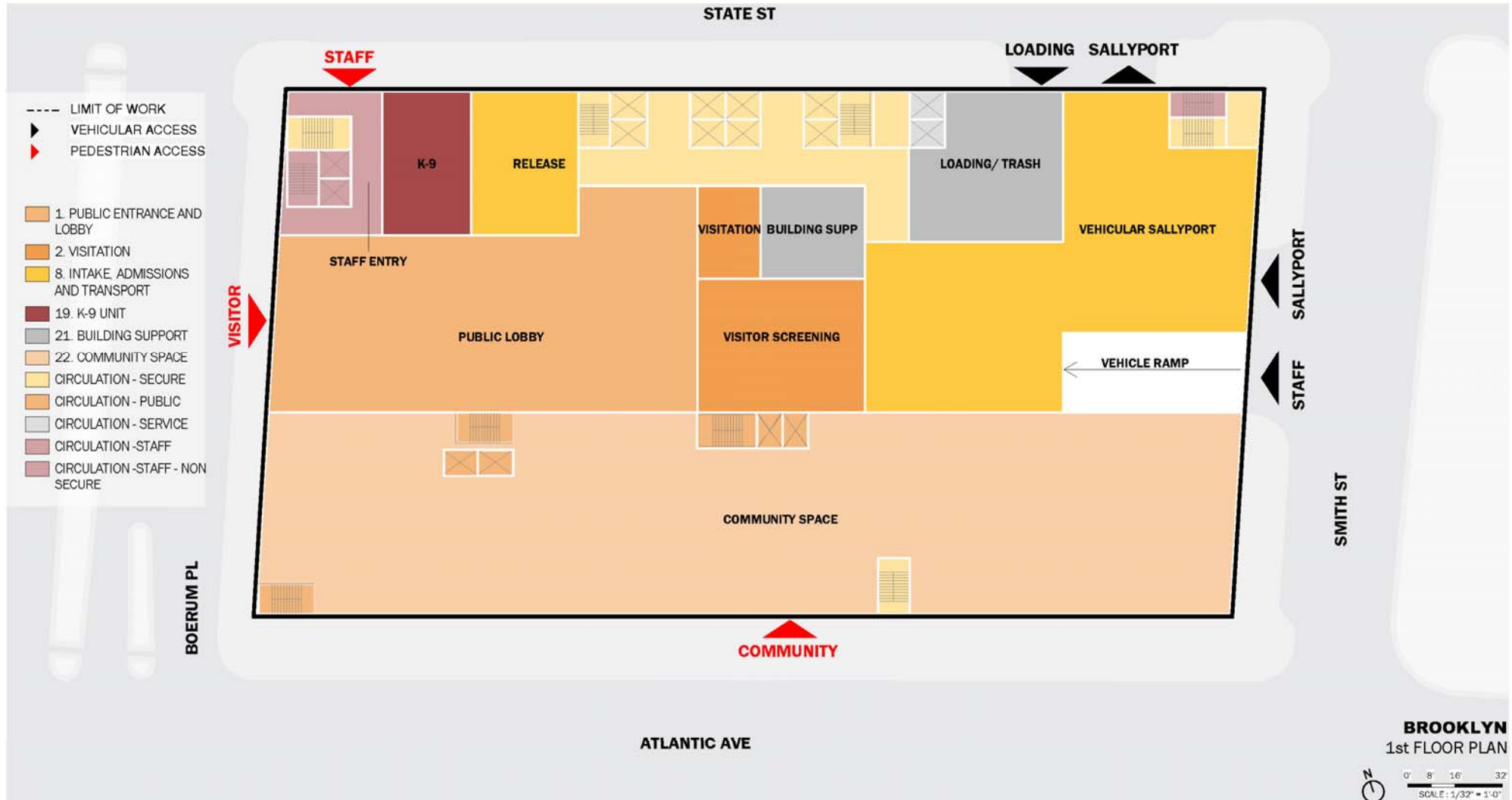
BROOKLYN

275 ATLANTIC AVENUE



275 ATLANTIC AVENUE

POTENTIAL GROUND LEVEL ACCESS AND USES





CONFIDENTIAL BEYOND RIKERS: TOWARDS A BOROUGH-WIDE STRATEGY FOR PUBLIC SPACE

A map of New York City with the five boroughs outlined in white. The Bronx is highlighted in yellow. The Hudson River is on the left, and the Harlem River is in the center. The text "The Bronx" is written in white on the right side of the map.

The Bronx

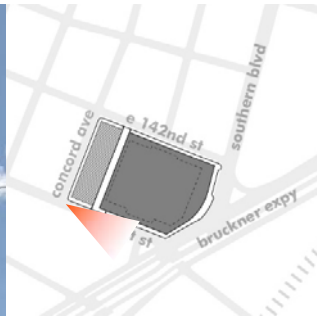
THE BRONX

320 CONCORD AVENUE



THE BRONX

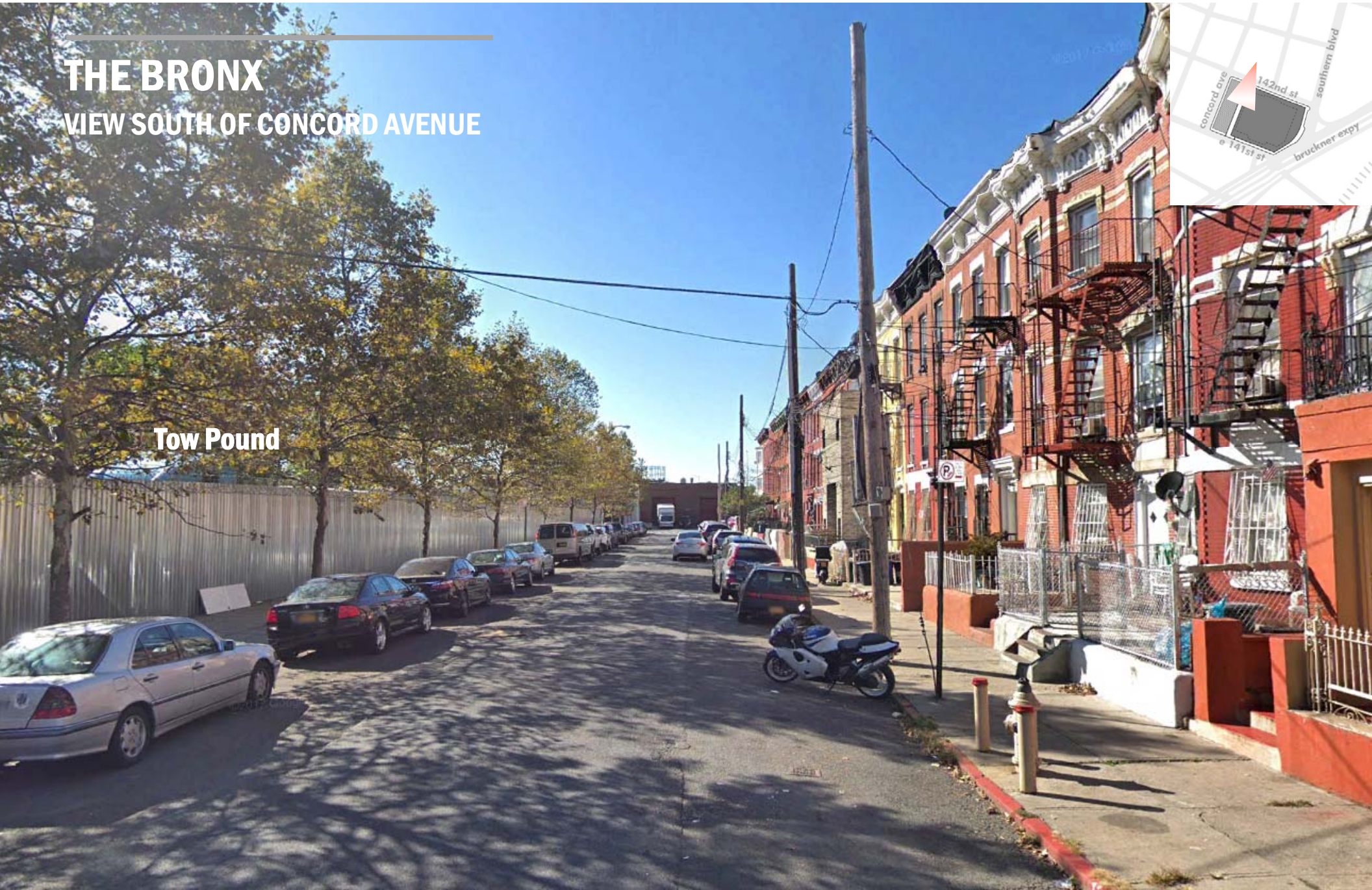
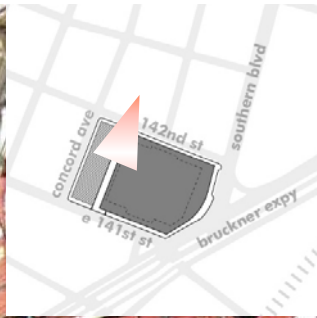
VIEW EAST DOWN E141ST STREET



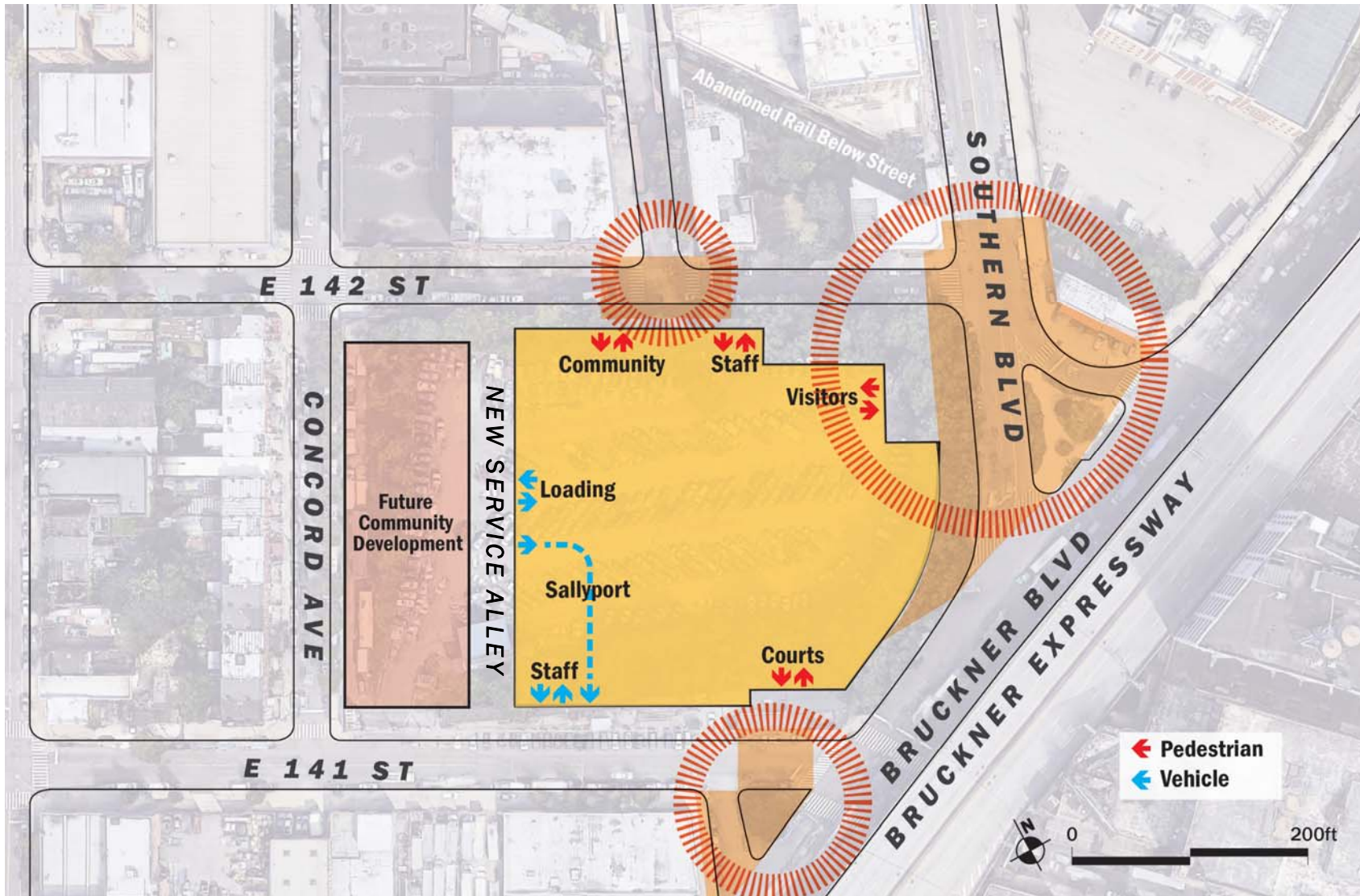
THE BRONX

VIEW SOUTH OF CONCORD AVENUE

Tow Pound

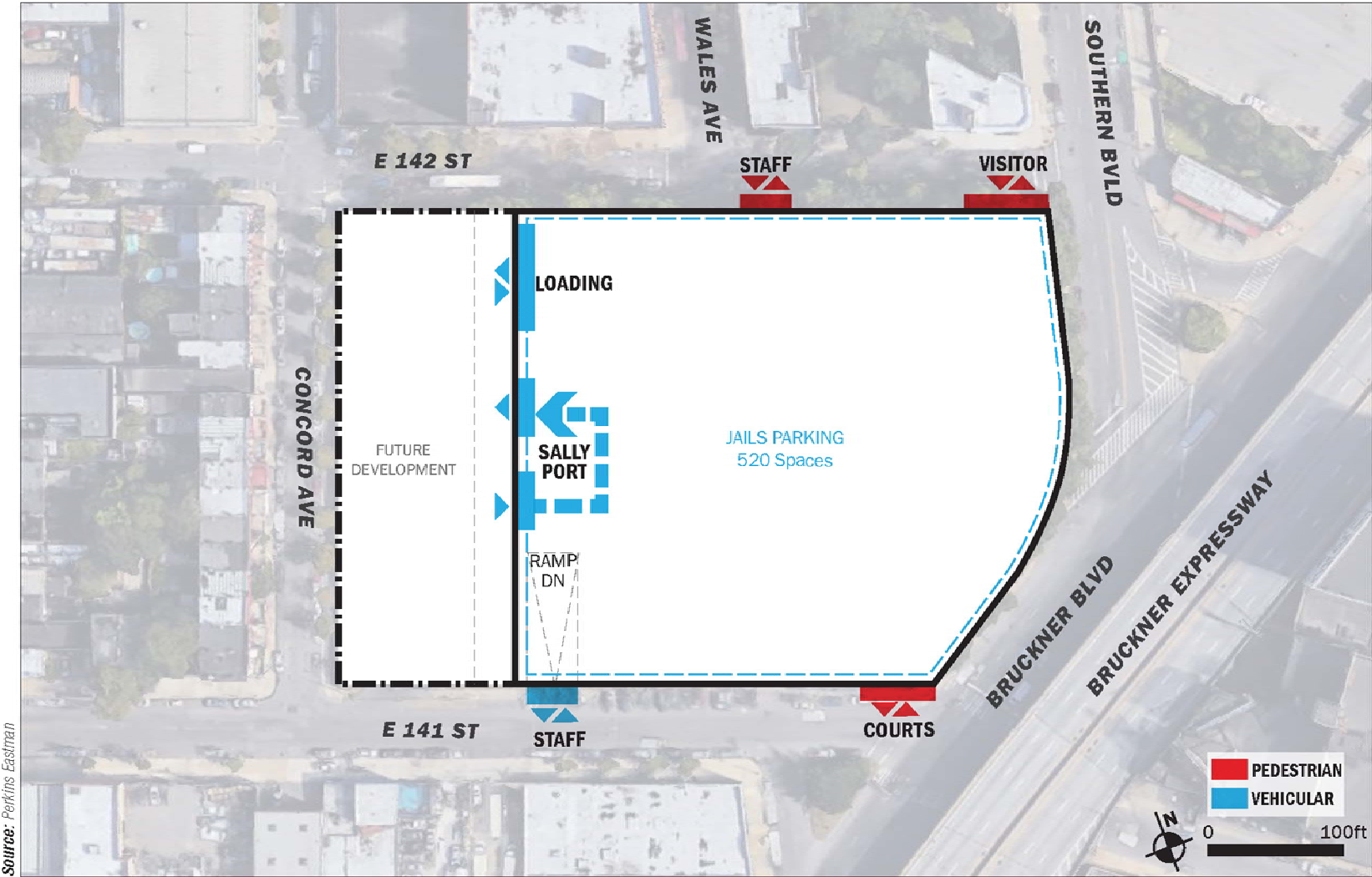


THE PROPOSAL: KEY PLACES



THE BRONX SITE 320 CONCORD AVENUE

ACCESS/ CIRCULATION





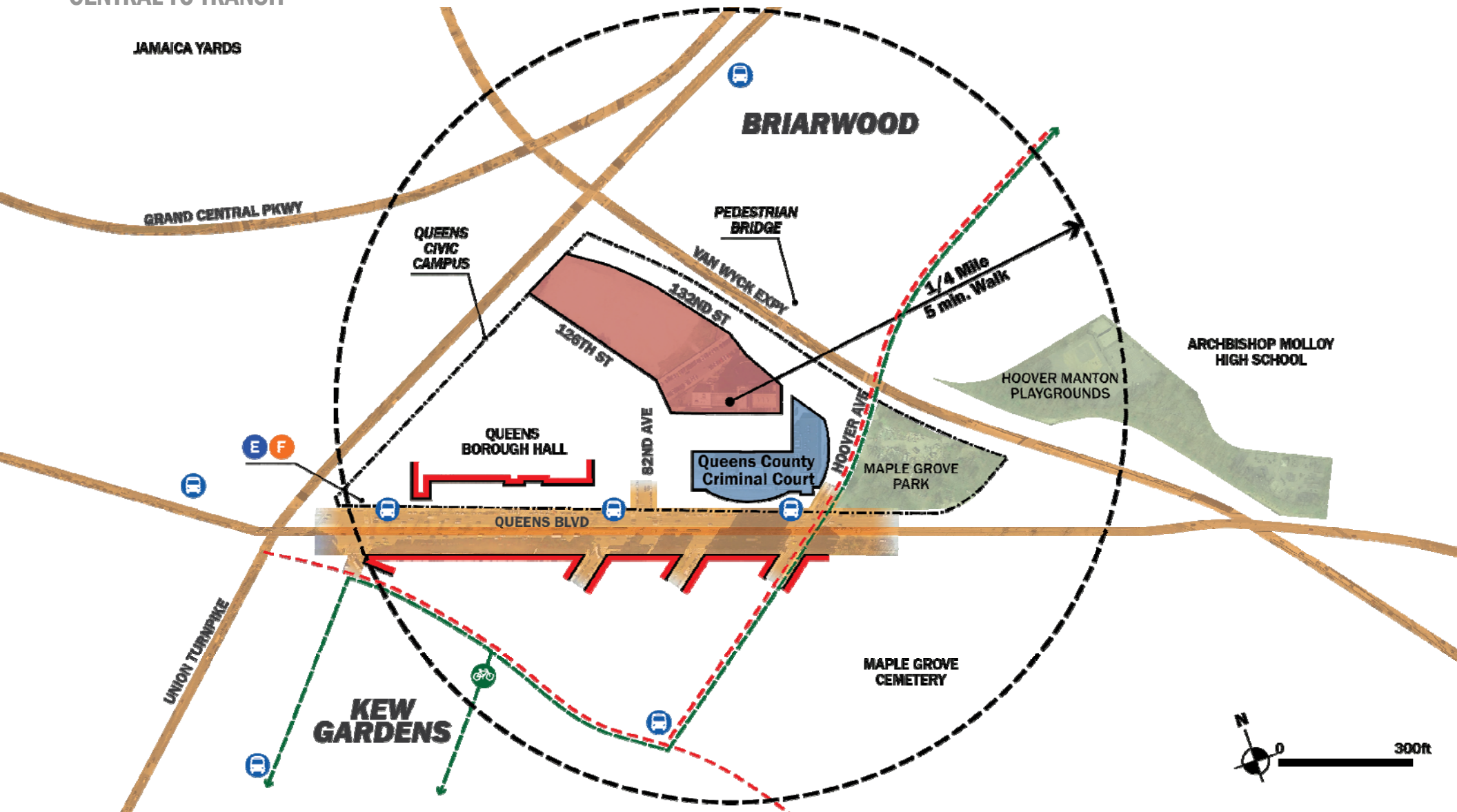


Queens

QUEENS

CENTRAL TO TRANSIT

JAMAICA YARDS

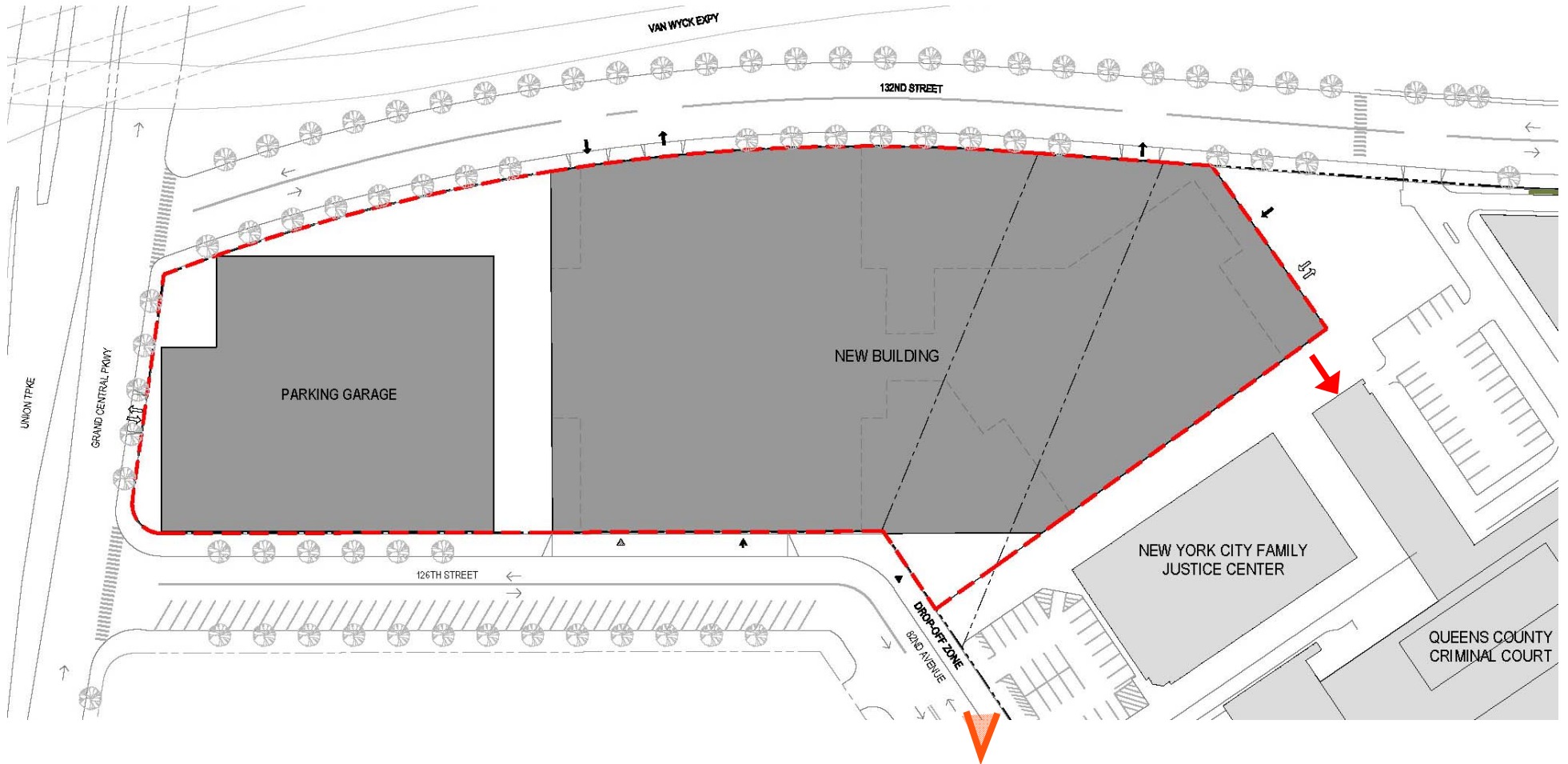


QUEENS: 126-02 82ND AVENUE

SURROUNDING AREA



QUEENS





A map of the Chesapeake Bay area, showing the intricate waterways and surrounding landmasses. A small, irregularly shaped island or peninsula is highlighted in yellow, located in the upper central part of the bay. The text "LOOKING AHEAD" is overlaid on the right side of the map in a large, bold, white sans-serif font.

**LOOKING
AHEAD**

LOOKING AHEAD

NEXT STEERING COMMITTEE MEETING WILL BE LATE SPRING/EARLY SUMMER

Behavioral health information from Ayesha/Chelsea

- Xxxx
- Xxxx
-

A map of the Chesapeake Bay area, showing the main body of water and surrounding landmasses. A small, irregularly shaped island or peninsula is highlighted in yellow, located in the upper central part of the bay. The text "NEXT STEPS" is overlaid on the right side of the map.

NEXT STEPS