

Zoom Functions

Mute and Unmute

You may only unmute after being prompted to do so.



Stop and Start Video



Chat

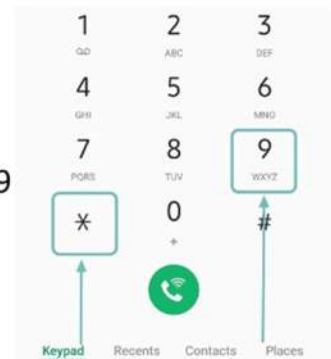
Questions may also be asked in the chat.



Raise Hand

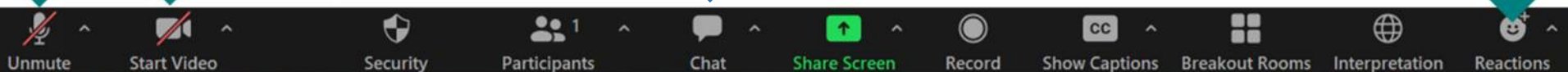
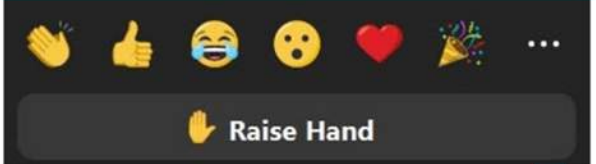
By Phone:

If dialing in by phone, press *9 to raise hand.



Zoom:

To provide questions or feedback, use the 'raise hand' function to join the queue. Participants will be called on in order of hand raised.





NYC Criminal Justice

NYC DDC Department of Design and Construction

Borough-Based Jails

Project Approach Construction Phase

October 22, 2024

BK Brooklyn Borough Based Jail



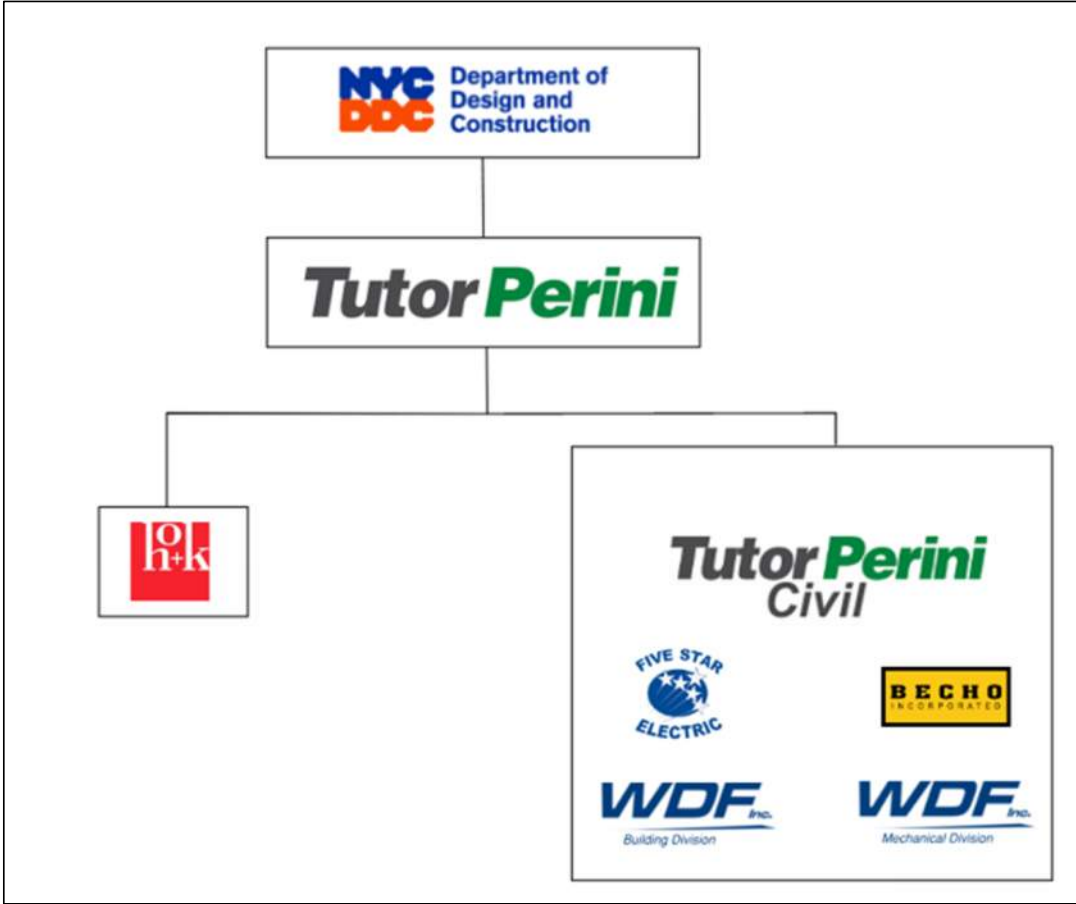
Agenda

- 1 Design Build Team Approach
- 2 Project Overview
- 3 Phase 1 Recap
- 4 Upcoming Work to end of 2024
- 5 Phase 2 Site Logistics
- 6 Phase 2 Major Activities
- 7 Project Work Hours
- 8 Project Monitoring Plan
- 9 Future Engagement
- 10 Q&A Session

Brooklyn

Design Build Team Approach

Design Build Team



Brooklyn

Project Overview

PROJECT OVERVIEW

- 1040 New Beds
- 295' Tall
- 60,000 SF Footprint
- 900,000 SF Building
- Structural Steel Framing
- Concrete Core
- Slabs on Deck
- 2 Subcellar Levels
- Curtain Wall System
- Percent for Art Program
- NYPD & DOC Sallyport



PROJECT SCHEDULE

Brooklyn Facility Schedule

	Start	Finish	2023				2024				2025				2026				2027				2028				2029				
			Q1	Q2	Q3	Q4	Q1	Q2	Q3	Q4	Q1	Q2	Q3	Q4	Q1	Q2	Q3	Q4	Q1	Q2	Q3	Q4	Q1	Q2	Q3	Q4	Q1	Q2	Q3	Q4	
Phase 1 - Construction (SOE)	APRIL 2024	NOV 2024																													
Phase 2 - Construction	NOV 2024	MARCH 2029																													
Phase 2 - Substantial Completion		MARCH 2029																													◆
Phase 2 - Final Completion		SEPT 2029																													◆

Brooklyn

Phase 1 Recap

Phase 1 Key Milestones

During Phase 1 – TPC successfully installed the Support of Excavation (SOE) for the Project



Phase 1 Key Milestones

Activity Description	Start Date	
Site Mobilization	April 22, 2024	+182 DAYS
Start of Pile Drilling	May 21, 2024	+153 DAYS
Start of After-Hours Variances	JUNE 13, 2024	+130 DAYS

Brooklyn

Upcoming Work to end of 2024

SUMMARY OF PLANNED WORK

October

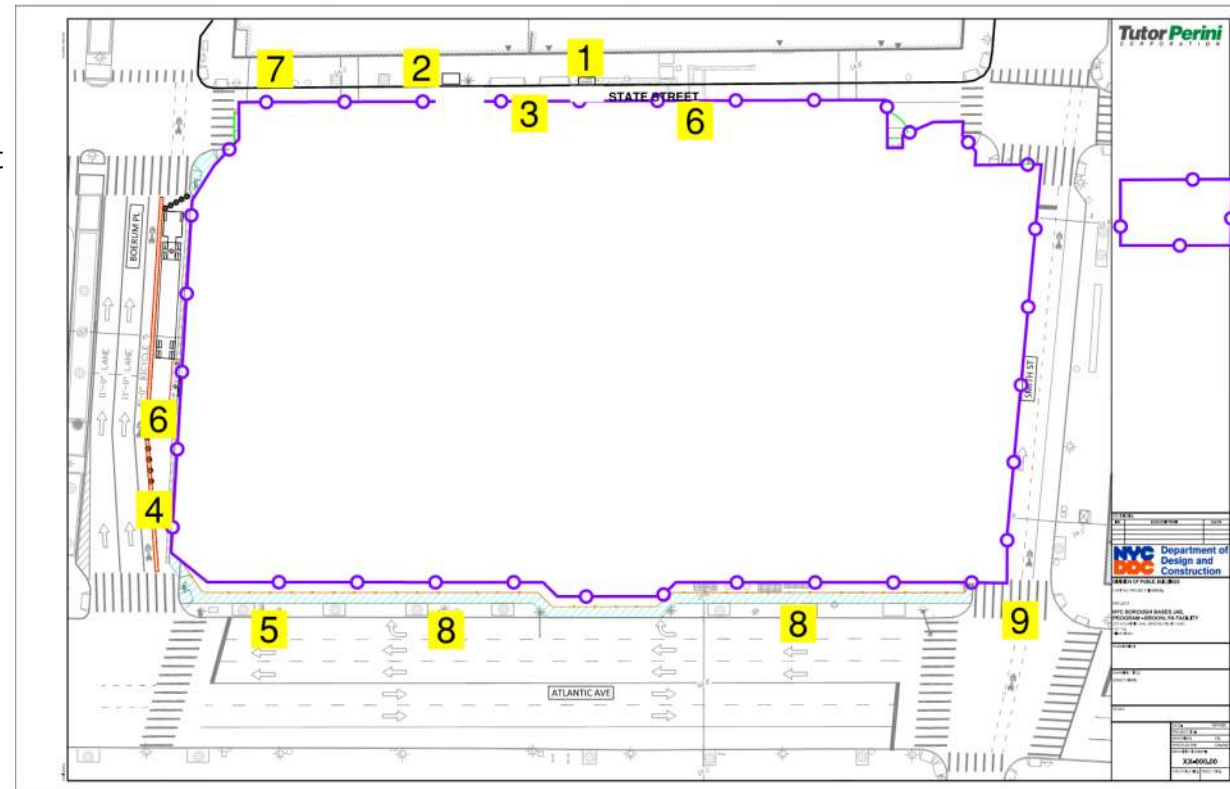
1. Move Existing DOC Officer Booth on State Street
2. Install Temporary NYPD Officer Booth on State Street

November

3. Move Construction Fence on State Street
4. Install DEP Water Main on Boerum Place
5. Tie in DEP Water Main on Atlantic Avenue
6. Install Foundations for Tower Cranes

December

7. Relocate Fire Hydrant on State Street
8. Atlantic Avenue Utility Tie-ins
9. Install DEP Manhole on Smith Street

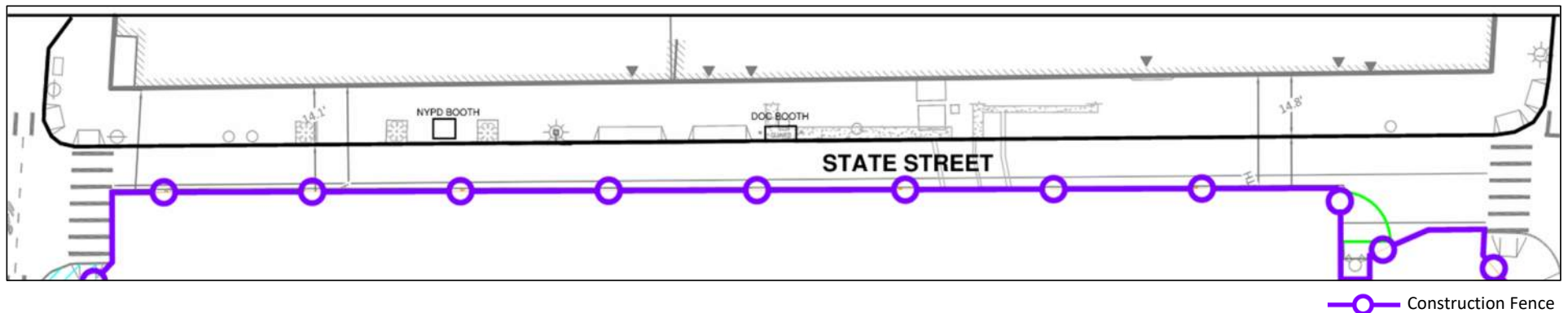


—○— Construction Fence

3. Move Construction Fence on State Street

Location: State Street
Planned Start: NOVEMBER 1
Duration of work: 3-4 days

Purpose: For new Building Footprint Construction and Future Crane



Impacts

1. Courthouse Parking on North Side of State Street eliminated
2. One Lane of through traffic on State Street
 - **The Project Team is in discussions with DOT and DOB for closing State Street to authorized traffic only**
3. No Impact to Pedestrians

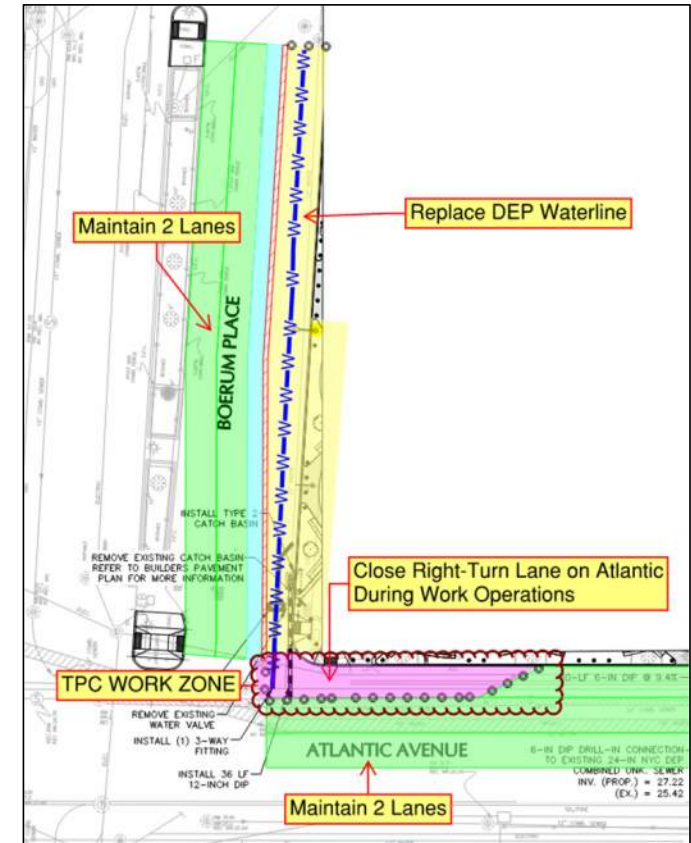
4. Install Water Main on Boerum Place & Tie in Water Main on Atlantic Avenue

Location: Boerum Place & Atlantic Avenue
Planned Start: November
Duration of work: 30+ Days

Purpose: DEP Requirement and Future Crane Location

Impacts

1. Close Right Turn Lane on Atlantic Avenue
 - DOT requiring this work take place during regular work hours.
2. Always maintain (2) Northbound Lanes of through traffic on Boerum Place
3. Always maintain (2) Westbound Lanes of through traffic on Atlantic Avenue
4. Pedestrians directed to opposite side of Atlantic Avenue
5. Pedestrians directed to opposite side of Boerum Place



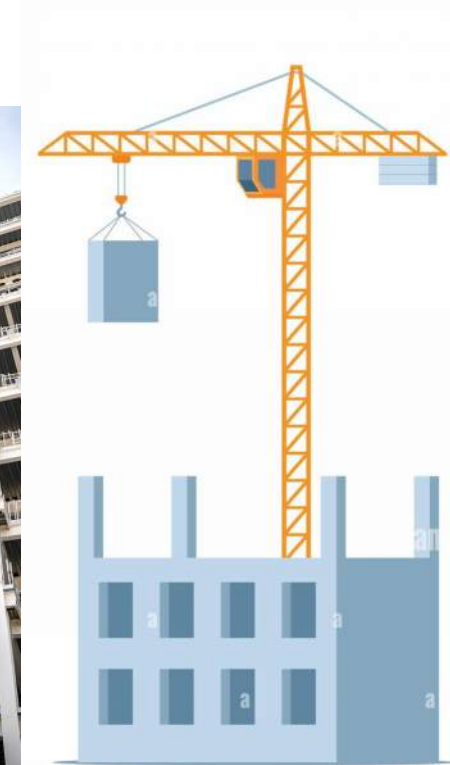
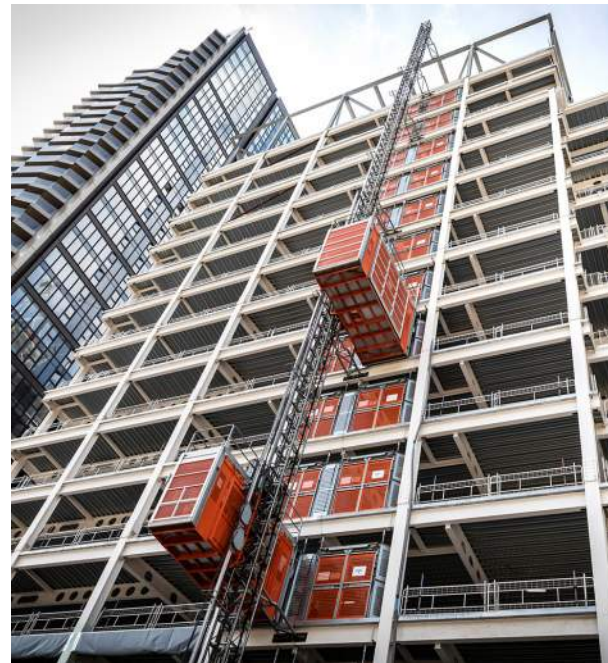
Brooklyn

Phase 2 Site Logistics

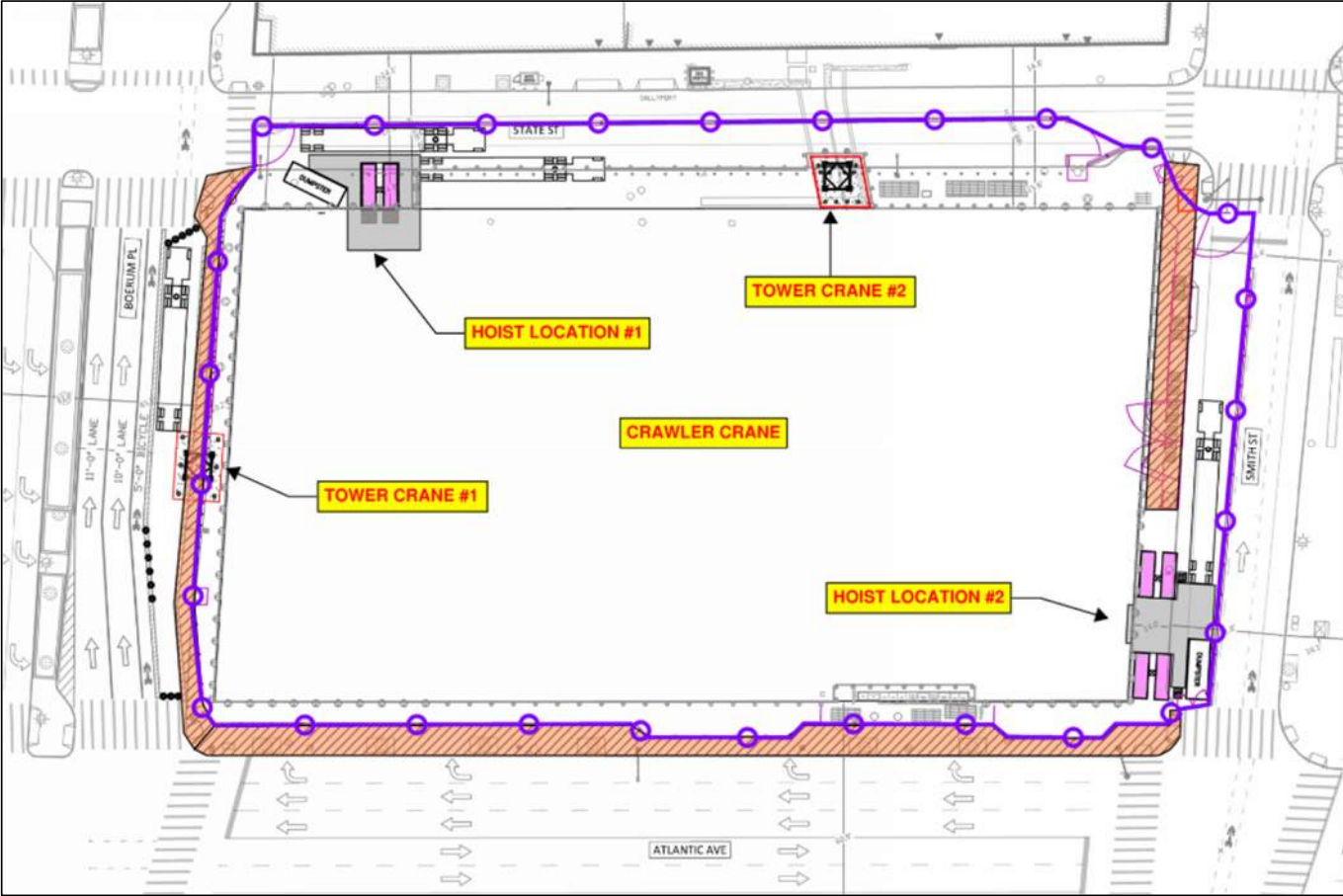
Manpower and Material Distribution

This Project will need the following:




- Tower Cranes – 2 Locations
- Material Hoists – 2 Locations (3 Banks)
- Ground Level Movement
 - Deliveries of Building Materials
 - Concrete Pumps & Trucks



Phase 2 Site Logistics



LEGEND

-  Entrance
-  Sidewalk Shed
-  Construction Fence

Brooklyn

Phase 2 Major Activities

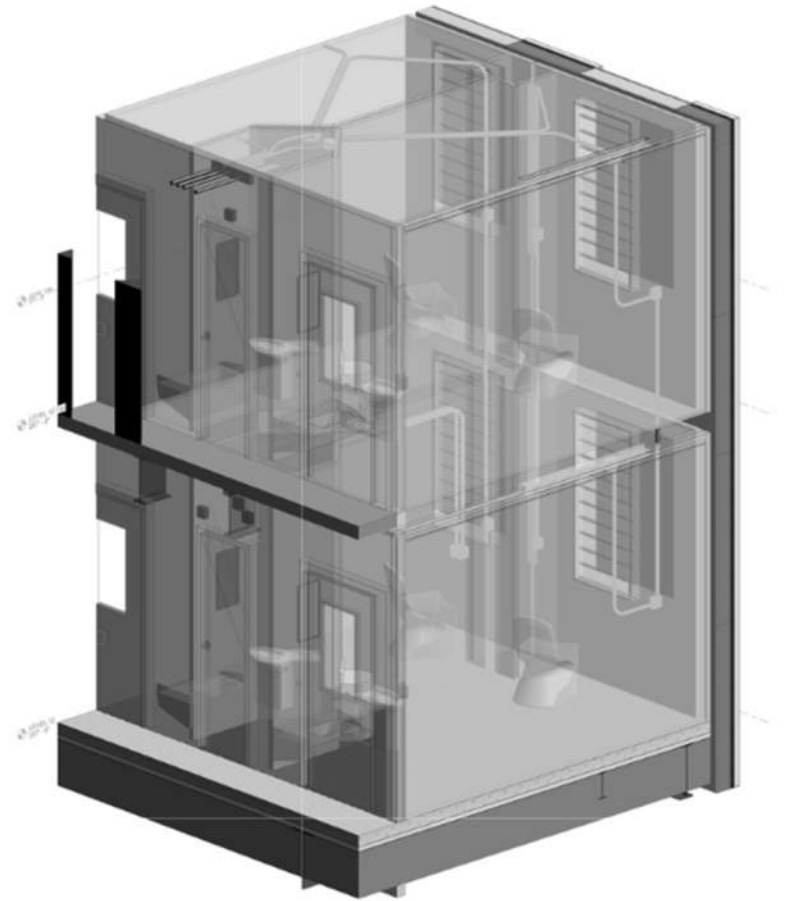
PHASE 2 MAJOR ACTIVITIES

- Foundations
- Structural Steel
- Concrete Core
- Concrete Slab Pours
- Fireproofing
- Building Enclosure
- Detention Cell Installation
- State Street Tunnel
- Interior Fitout
- MEP Systems
- Testing and Commissioning
- Landscaping & Hardscaping

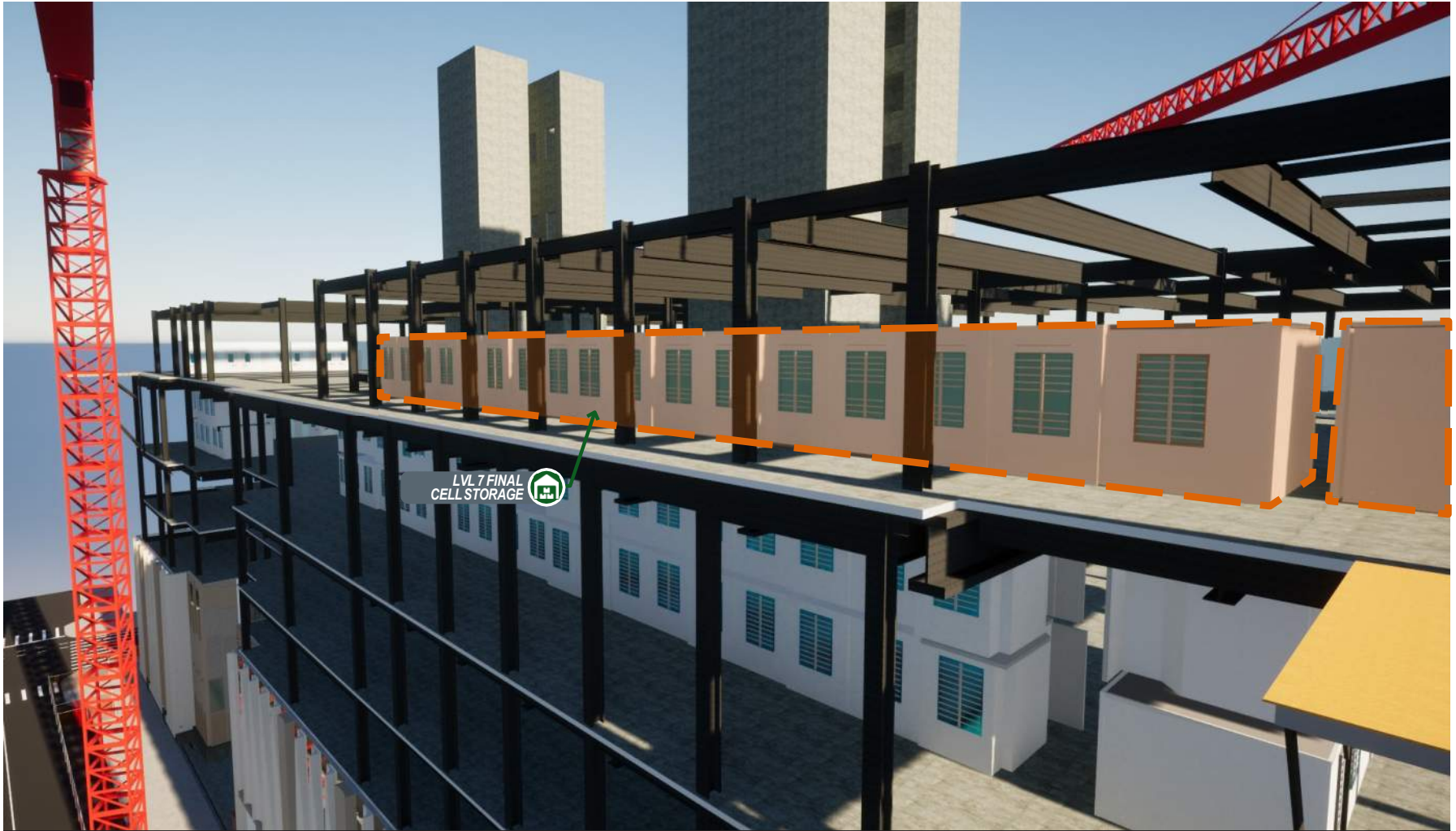


Modular Cell Units

- Modular Units fabricated offsite
- Delivered to site
- Loaded into Building via Tower Crane
- Rolled into final position







LVL 7 FINAL
CELL STORAGE





PLATFORM JUMPS TO LEVEL 9 & LEVEL 06 & LEVEL 07 CELLS ARE PUT INTO FINAL PLACEMENT



CURTAINWALL INSTALLED
UP TO LEVEL 08

INVEST

Brooklyn

Project Work Hours

Phase 2 Schedule and Detailed Work Activities

Activity	Expected Start Date	Expected Completion Date	MONDAY - FRIDAY			SATURDAY
			6AM-7AM (Mobilization Time)	Shift 1 (7AM-6PM) Standard Work Hours	Shift 2 (330PM-12AM) AHV Hours after 6PM	9AM-5PM (AHV Hours)
Foundations	Q4 2024	Q2 2025	<ul style="list-style-type: none"> •Unlock Construction Gate •Arrival of Workers •Wearing Personal Protective Equipment (PPE) •Tools and Equipment Inspections •Stretch and Flex •Delivery Trucks arriving into site footprint •Coordination Meetings •Safety Checks 	<ul style="list-style-type: none"> •Localized excavation for pile caps & grade beams •Cutting & Fastening of concrete formwork •Cutting & installation of rebar •Concrete trucks for pouring foundations 	<ul style="list-style-type: none"> •Localized excavation for pile caps & grade beams •Cutting & Fastening of concrete formwork •Cutting & installation of rebar •Concrete trucks for pouring foundations •Extended Concrete Pours 	<ul style="list-style-type: none"> •Localized excavation for pile caps & grade beams •Cutting & Fastening of concrete formwork •Cutting & installation of rebar •Concrete trucks for pouring foundations •Extended Concrete Pours
Structural Steel Concrete Core Concrete Slab Pours Fireproofing Building Enclosure Cell Installation	Q2 2025	Q4 2026	<ul style="list-style-type: none"> •Unlock Construction Gate •Arrival of Workers •Distribution of manpower to floors •Wearing Personal Protective Equipment (PPE) •Tools and Equipment Inspections •Stretch and Flex •Delivery Trucks arriving into site footprint •Coordination Meetings •Safety Checks 	<ul style="list-style-type: none"> •Trucks delivering steel members •Tower cranes hoisting steel •Exterior Hoists delivering materials to floors •Loading & shake out of steel •Concrete trucks unloading into concrete pumps •Applying fireproofing to steel members 	<ul style="list-style-type: none"> •Structural Steel Detailing (Welding, Decking) •Curtain Wall Installation •Modular Cell Loading •Applying fireproofing to steel members 	<ul style="list-style-type: none"> •Trucks delivering steel members •Tower cranes hoisting steel •Exterior Hoists delivering materials to floors •Loading & shake out of steel •Concrete trucks unloading into concrete pumps •Applying fireproofing to steel members

Brooklyn

Project Monitoring Plan

Project Monitoring Plan Review & Approval Process

The Project Monitoring plan was submitted, reviewed and approved by:

- Engineer of Record (Langan Engineering & HOK)
- Department of Buildings (DOB)
- NYC Landmarks Preservation Commission (LPC)
- Transit Authority (MTA)
- Department of Design and Construction (DDC)

Environmental Monitoring Plan



Total of 25 Monitoring Devices

- Quantity**
- (4) Air Monitors
 - (15) Vibration Monitors
 - (6) Noise Monitors

Cyan Circle: AIR MONITORING

Magenta Circle: VIBRATION MONITORING

Yellow Square: NOISE MONITORING

PROTOCOL FOR EXCEEDANCE LIMITS

If any monitoring reading exceeds limiting criteria, the following actions shall be taken:

- The contractor will immediately be notified by the monitoring devices
- DDC will be notified by the contractor
- Work in the vicinity of the exceedance will be stopped
- The contractor will assess the reasoning for the exceedance
- Corrective actions will be taken depending on severity of exceedance
- The method to perform the work close to the exceedance will be revised
- Work will resume using the agreed-upon revised methods
- The contractor will continue monitoring for exceedances of allowable limits

Brooklyn

Future Engagement

Community Resources During Construction



BBJ Website

<https://rikers.cityofnewyork.us/>



Designated Phone Number



Weekly Look Ahead



Advisories for Impactful Construction Activities



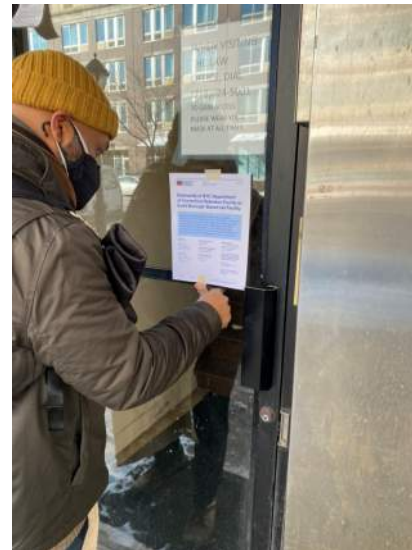
Community Construction Liaison & Field Office

Lucien Allen Brooklyn BBJ CCL

(917) 270-2370 / BrooklynCCL@bbjnyc.com

360 Atlantic Avenue

Monday – Friday 7:00am - 3:30pm



Upcoming Community Meetings

1. 12/05/24 - CAB Meeting
2. (TBD Early December) – Final Community Design Meeting (In Person)
3. 12/18/24 – CB2 Land Use Committee – Final design update (In Person)



Coordination with Office of Community Outreach and Notification

In conjunction with DDC & Office of Community Outreach & Notification the following items will be periodically issued to the Community:

- Construction Schedule Updates
- Monthly Monitoring Reports
 - Air Monitoring
 - Noise Monitoring
 - Vibration Monitoring
- Maintaining relationship of constant communication

Brooklyn

Questions or Comments?



NYC Criminal Justice

NYC DDC Department of Design and Construction

Borough-Based Jails | NAC

Thank You



BK Brooklyn Borough Based Jail

July 2023