



NYC Criminal
Justice

NYC Department of
Design and
Construction
DDC

BOROUGH-BASED JAILS PROGRAM

QUEENS ADVISORY COMMITTEE

JANUARY 16, 2019



AGENDA

Welcome and Introductions

Program Summary

Points of Agreement

Why Design Build

Design Guidelines

Supporting Culture Change Through Design

Schedule and Engagement Opportunities

Questions



NYC Criminal
Justice

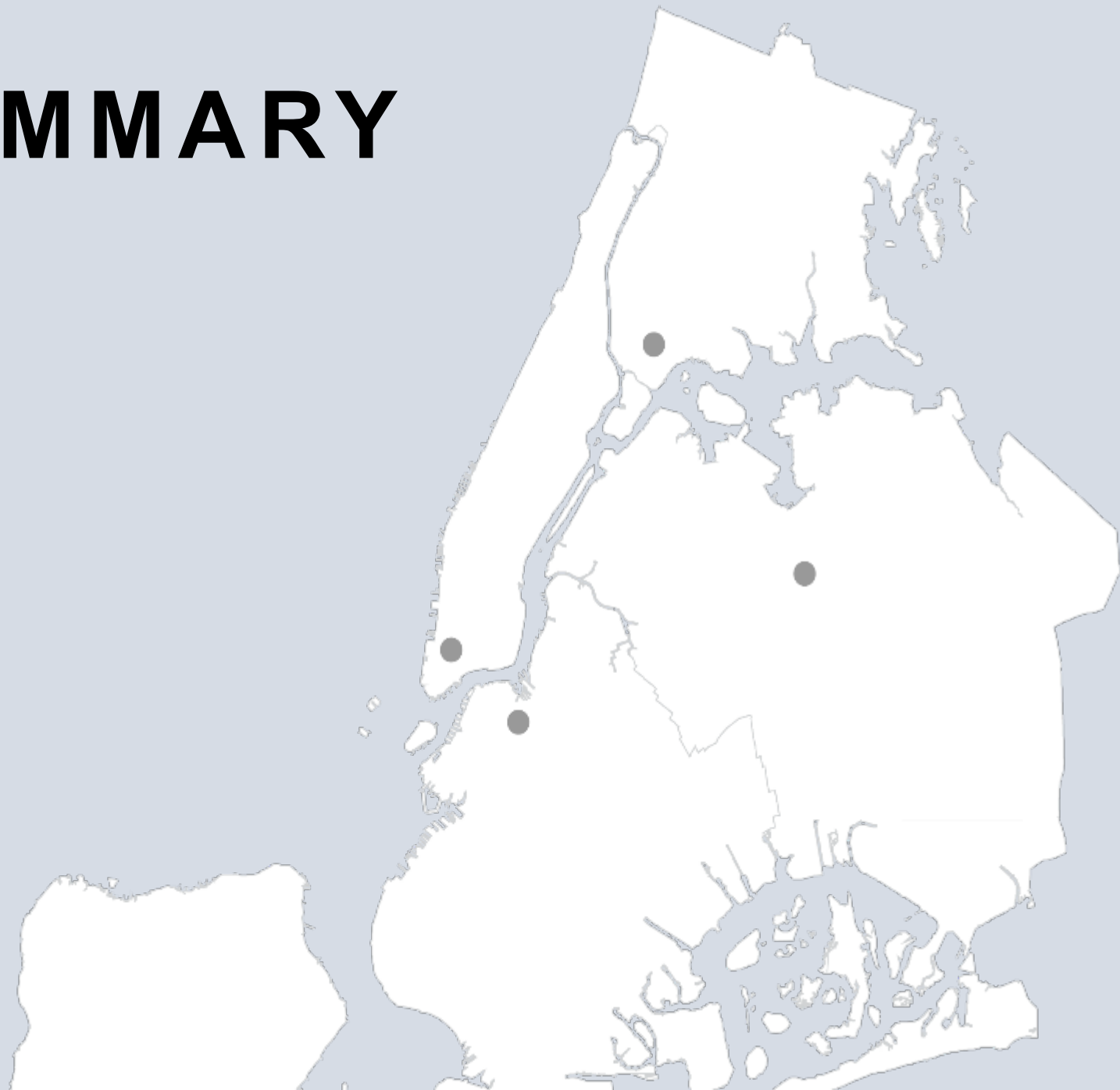
NYC Department of
DDC Design and
Construction

Queens Vision Statement

The Queens facility creates a civic place of arrival and public entrance at the terminus of 82nd Avenue, and steps height and bulk down from the highway scale facing the Van Wyck Expressway to the campus scale facing the courthouse and Queens Boulevard.



PROGRAM SUMMARY



NYC Criminal Justice

NYC Department of
Design and
Construction

Program Summary



NYC Criminal Justice

NYC Department of Design and Construction

Close jails on Rikers Island & The Barge

Replace with a **smaller, safer, fairer** system that will have:

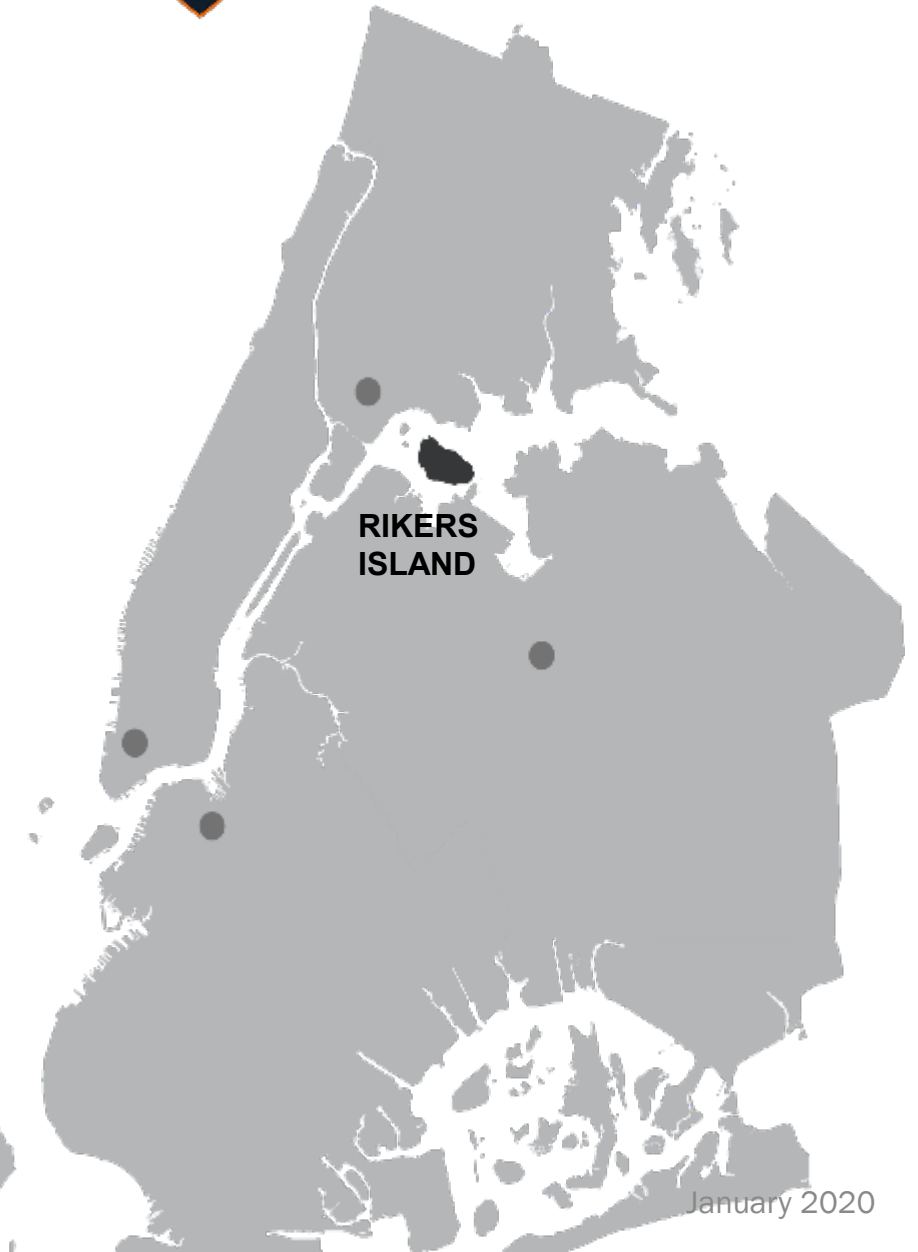
- Housing for a total of **3,300** people (requires 3,545 beds)—the lowest jail population in NYC since 1920

Current jail capacity in NYC: 10,500 beds
(Pre-GMDC closure: ~ 13,860 beds)

- **Four borough-based sites (Manhattan, Brooklyn, Queens, and The Bronx)**

Currently NYC has 11 active jails (8 facilities on Rikers Island; 3 borough facilities)

- **Continued focus on re-entry and culture change**



Borough-Based Jails Locations



NYC Criminal Justice

NYC Department of Design and Construction



Manhattan
124/125 White Street



Brooklyn
275 Atlantic Avenue



Queens
126-02 82nd Avenue



The Bronx
745 E. 141st Street

Program Changes Based on Community Input



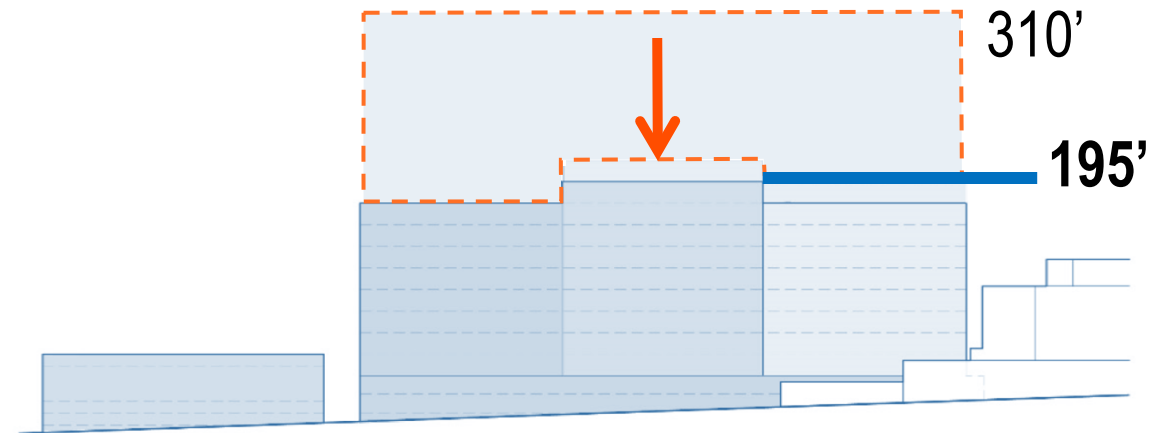
NYC Criminal Justice

NYC Department of Design and Construction

PROGRAM CHANGES TO DATE

- Women centralized in Queens facility with their own intake and visiting spaces
- Reduction to 3,545 beds as a result of bail reform
- Outposting of 250 therapeutic beds in NYC Health & Hospitals
- 2026 Build Timeline
- More efficient housing unit layout

Reduced Height **37%**



Reduced Maximum Allowable FAR **33%**
from 5.6 to 3.71

**Height and FAR reductions calculated from the maximum allowable height and FAR in the Draft Scope of Work*

Typical Program Components

Residents' Program: 347 SF/bed

(education, classrooms, program space, library, commissary, gym, chapel, mosque)

Support: 223 SF/bed

(circulation, MEP, food service, laundry, warehouse, building support)

Resident: 137 SF/bed

(male and female housing units - admissions, general population, special population, therapeutic)

Services: 43 SF/bed

(public entrance and lobby, visitation, intake, admissions and transport, and discharge)

Staff: 28 SF/bed

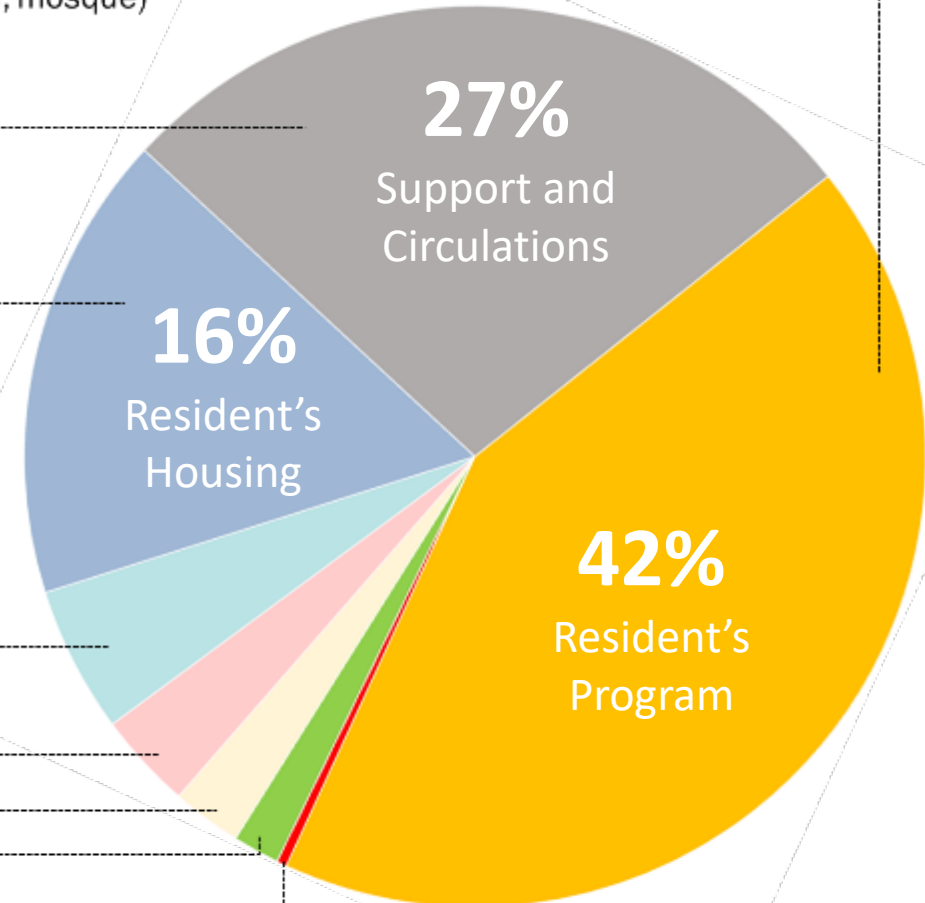
Community Space: 20 SF/bed

Health Services: 14 SF/bed

Security: 3 SF/bed

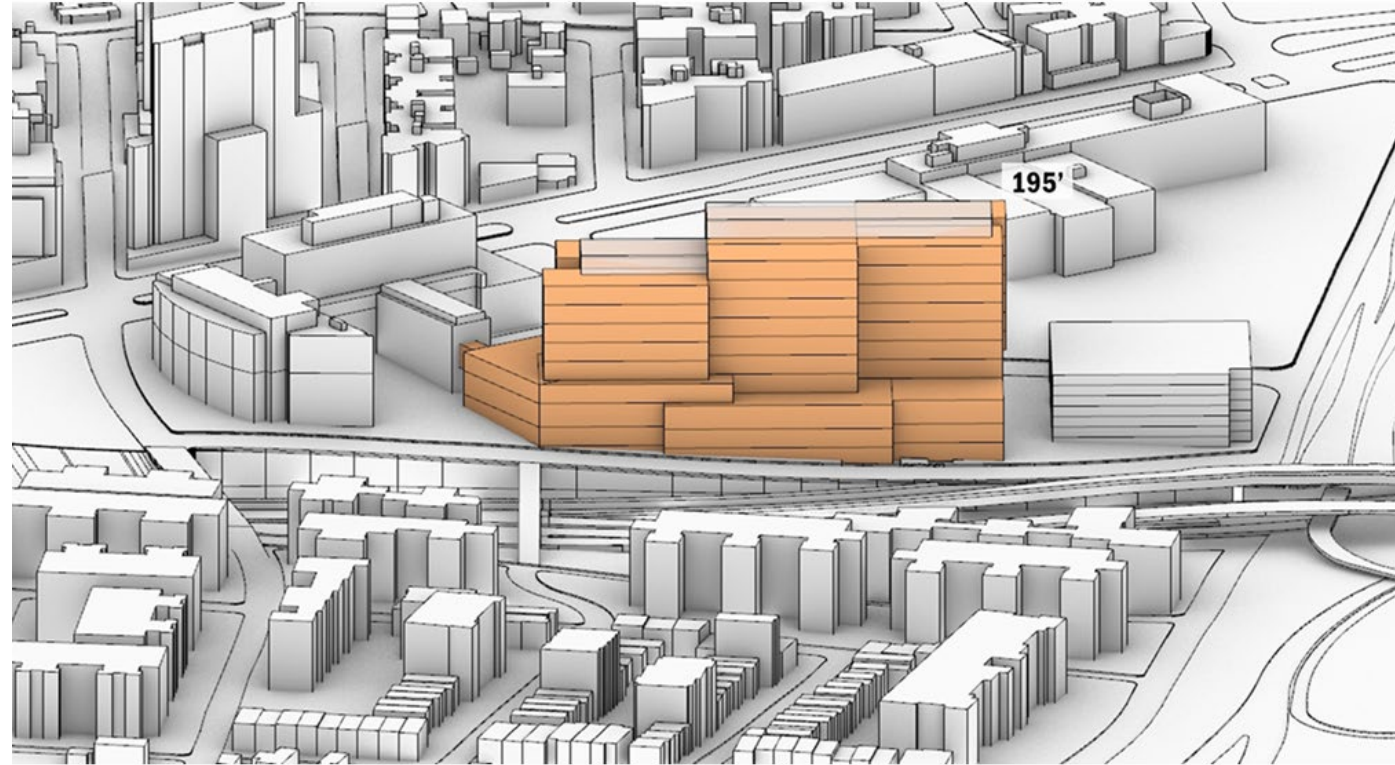
Total: 814 SF/Bed*

* Parking not included



ULURP Commitments

- Height: 195'
- FAR: 3.71
- Community Space: 25,000 Sq. Ft.
- Public Parking: 676 spaces
- Staff Parking: 605 under jail building
- Analysis of sewer capacity is required



WHY DESIGN BUILD



NYC Criminal
Justice

NYC Department of
Design and
Construction

Design-Build Essentials



NYC Criminal Justice

NYC Department of Design and Construction

An approach to construction that reduces delays, creates efficiencies, and promotes innovation.



Collaboration,
communication,
coordination



Uses **best practices**
from across the country
in building more humane
criminal justice facilities



Faster, more
efficient, and more
cost effective

JACOB J. JAVITS CENTER EXPANSION



LA GUARDIA INTERNATIONAL AIRPORT REDEVELOPMENT PROJECT



DESIGN GUIDELINES



NYC Criminal
Justice

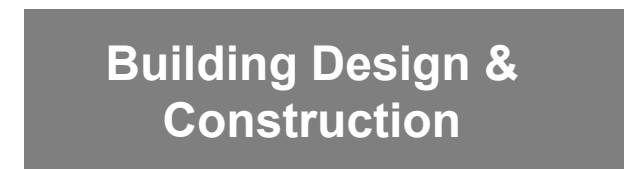
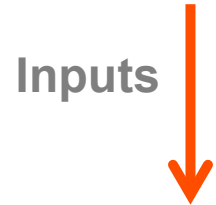
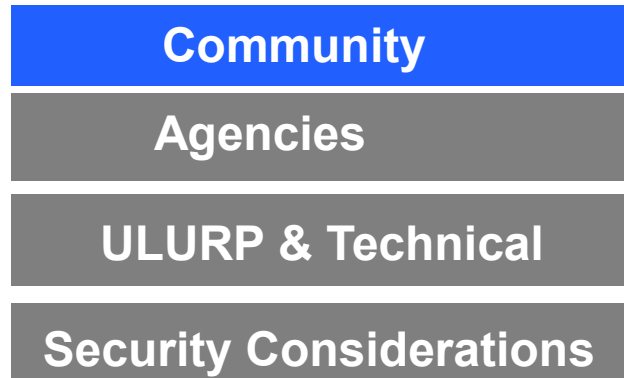
NYC Department of
Design and
Construction

Design Guidelines Development



NYC Criminal Justice

NYC Department of Design and Construction



Design Input



NYC Criminal Justice

NYC Department of Design and Construction
DDC



Design Guidelines Areas of Input



NYC Criminal Justice

NYC DDC Department of Design and Construction

- Streetscape
- Ground Floor Activation
- Building Materials and Articulation



SUPPORTING CULTURE CHANGE THROUGH DESIGN



NYC Criminal
Justice

NYC Department of
Design and
Construction

Designing a Welcoming Lobby



NYC Criminal Justice

NYC Department of Design and Construction

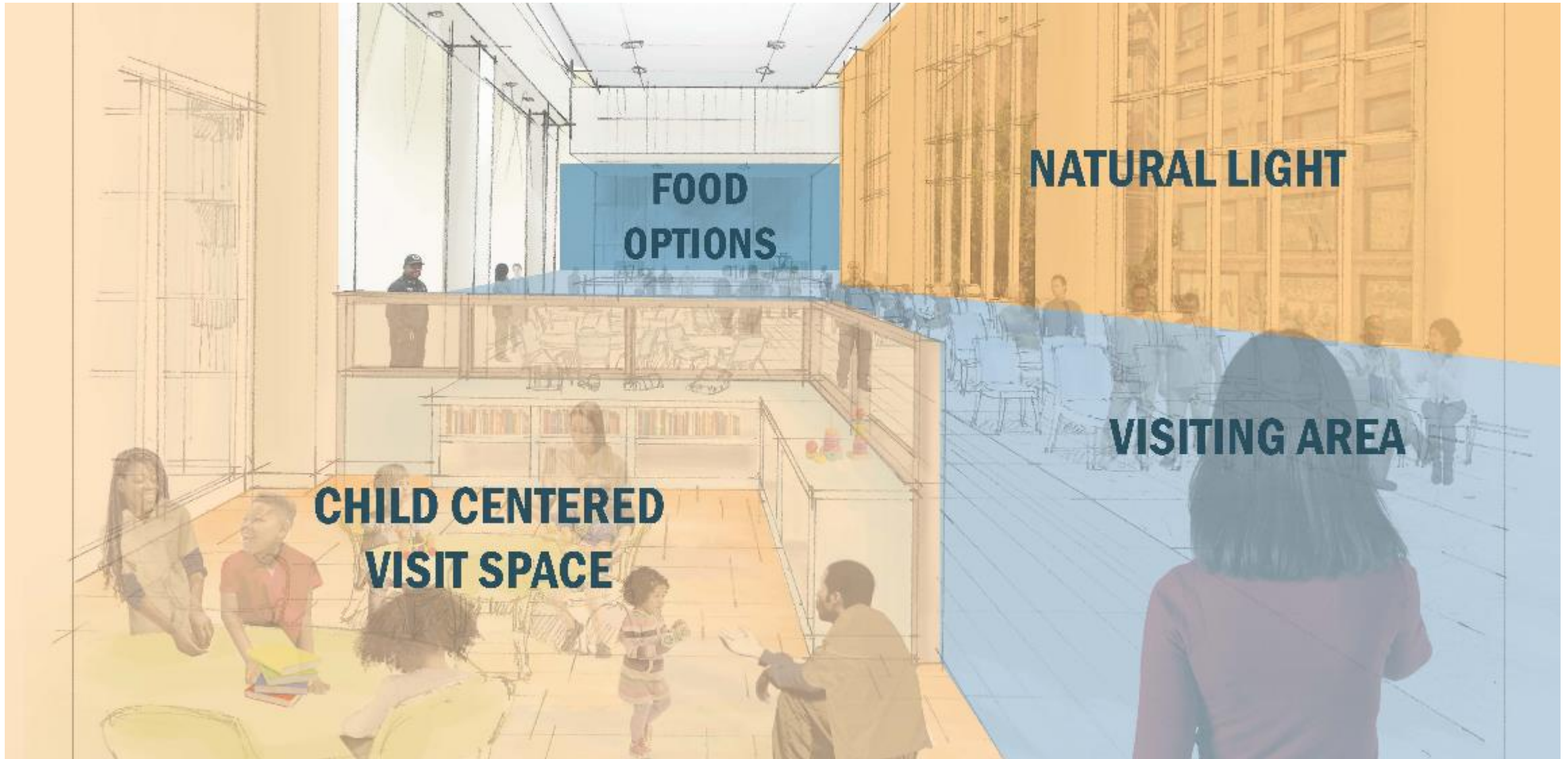


Designing Comfortable Visiting



NYC Criminal Justice

NYC Department of Design and Construction
DDC



Improving the Inside Experience

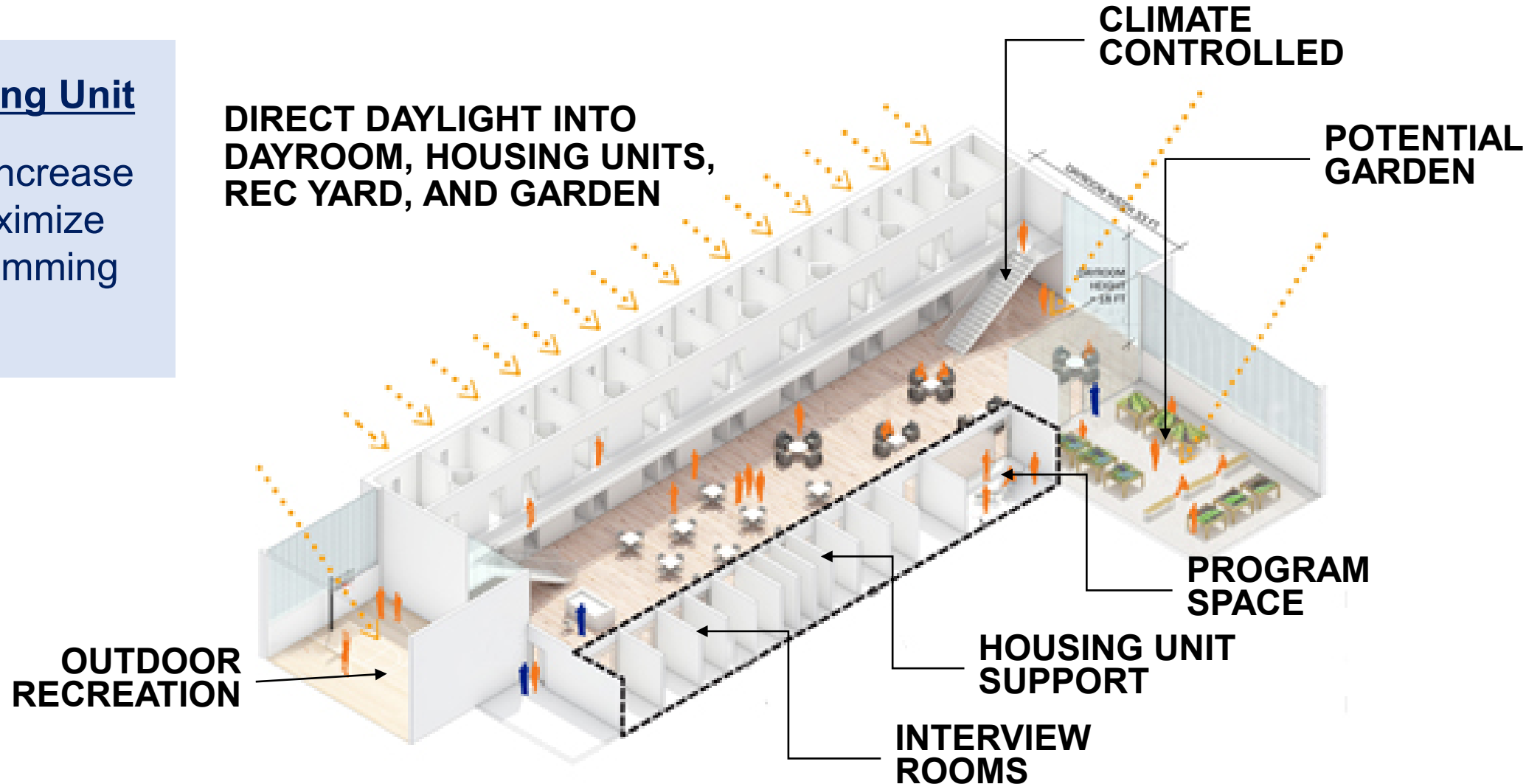


NYC Criminal Justice

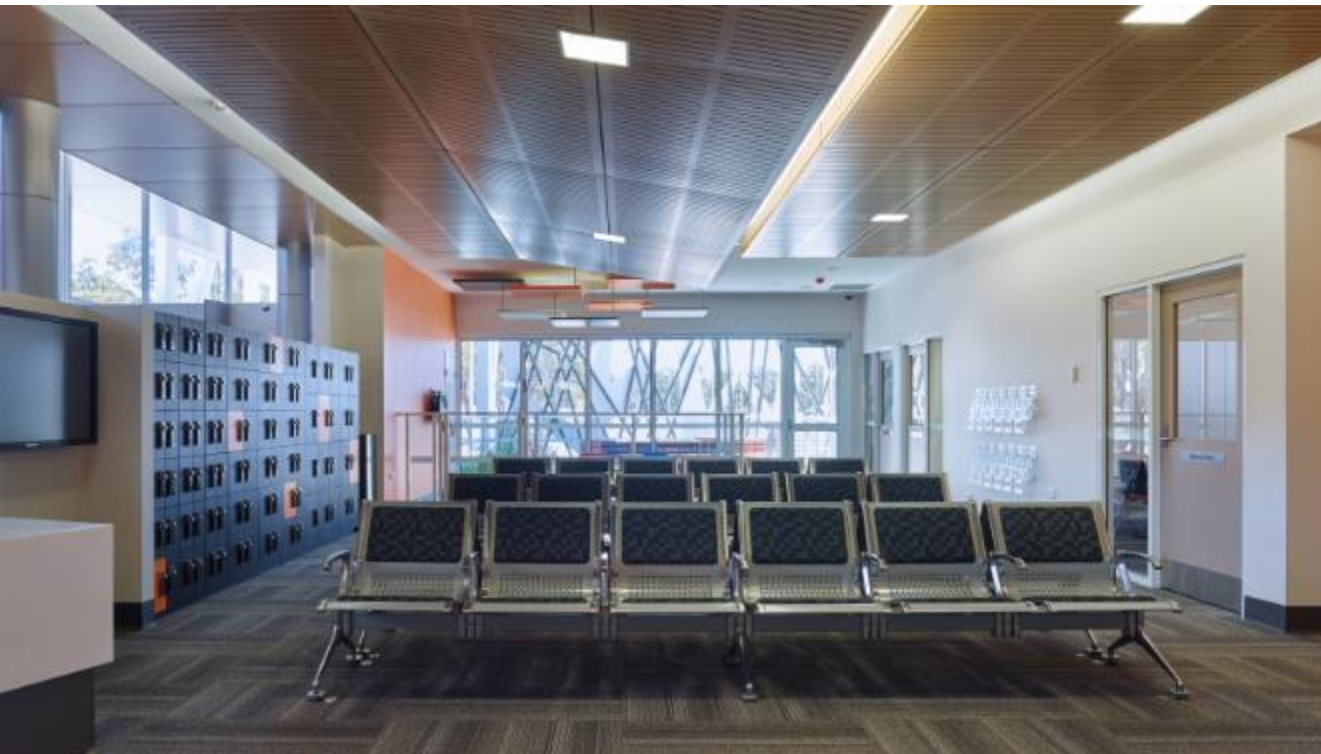
NYC Department of Design and Construction

Typical Housing Unit

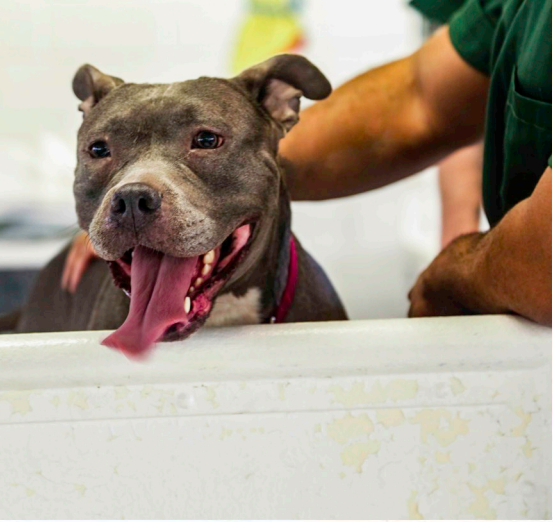
Smaller units increase safety and maximize tailored programming opportunities



Visitor / Volunteer Experience



Program Experience



Staff Experience



Complementing the Surrounding Neighborhood



NYC Criminal Justice

NYC Department of Design and Construction
DDC

- Include accessible space for community programming
- Active street level frontage to support local development
- Community-influenced exterior design



SCHEDULE AND ENGAGEMENT OPPORTUNITIES



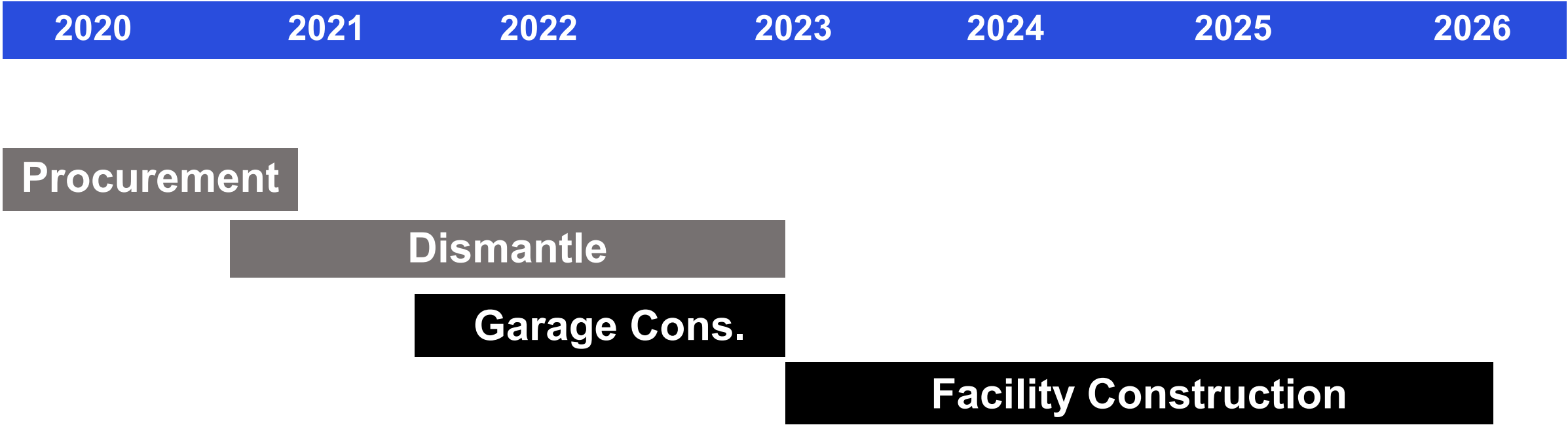
NYC Criminal
Justice

NYC Department of
Design and
Construction

Master Schedule



Queens Schedule & Milestones*



** Final RFP schedule may be advanced pending overall market response.*

Public Engagement Opportunities



Ongoing Meetings*

- | | |
|--|-------------|
| • Queens Advisory Committee | 01/14/2020 |
| • Community Boards | TBD |
| • Design Input Community Workshop | 01/22/2020 |
| • Queens Advisory Board | Spring 2020 |
| • Community Boards | Spring 2020 |
| • Community Presentation (Before Dismantling) | Spring 2021 |
| • Community Presentation (Before Construction) | Fall 2022 |

* *Subject to change as new information becomes available.*

Community Resources



Upcoming Community Resources During Construction

- Website
- Community Construction Liaison
- Designated Phone Number
- Newsletters
- Weekly Advisories
- 72-Hour Look Ahead for Impactful Construction Activities
- Store Front Location Close to the Construction Site

QUESTIONS



NYC Criminal Justice

NYC Department of Design and Construction
DDC