

Interior Public Spaces

Guiding Principles

- Plentiful natural light and views to the outdoors
- Civic asset that respectfully engages with its community
- Good neighbor with strategic placement of outdoor recreation areas
- Incorporating design for equity



*Preliminary illustration for discussion purposes only

Understanding the Community Context

Design for Equity

- Design buildings and spaces where human needs are met equitably and sustainably.
- Foster communities where all people have equal access to shelter, health, and nature
- Design spaces that enrich and inspire people.

BROOKLYN RESIDENTS

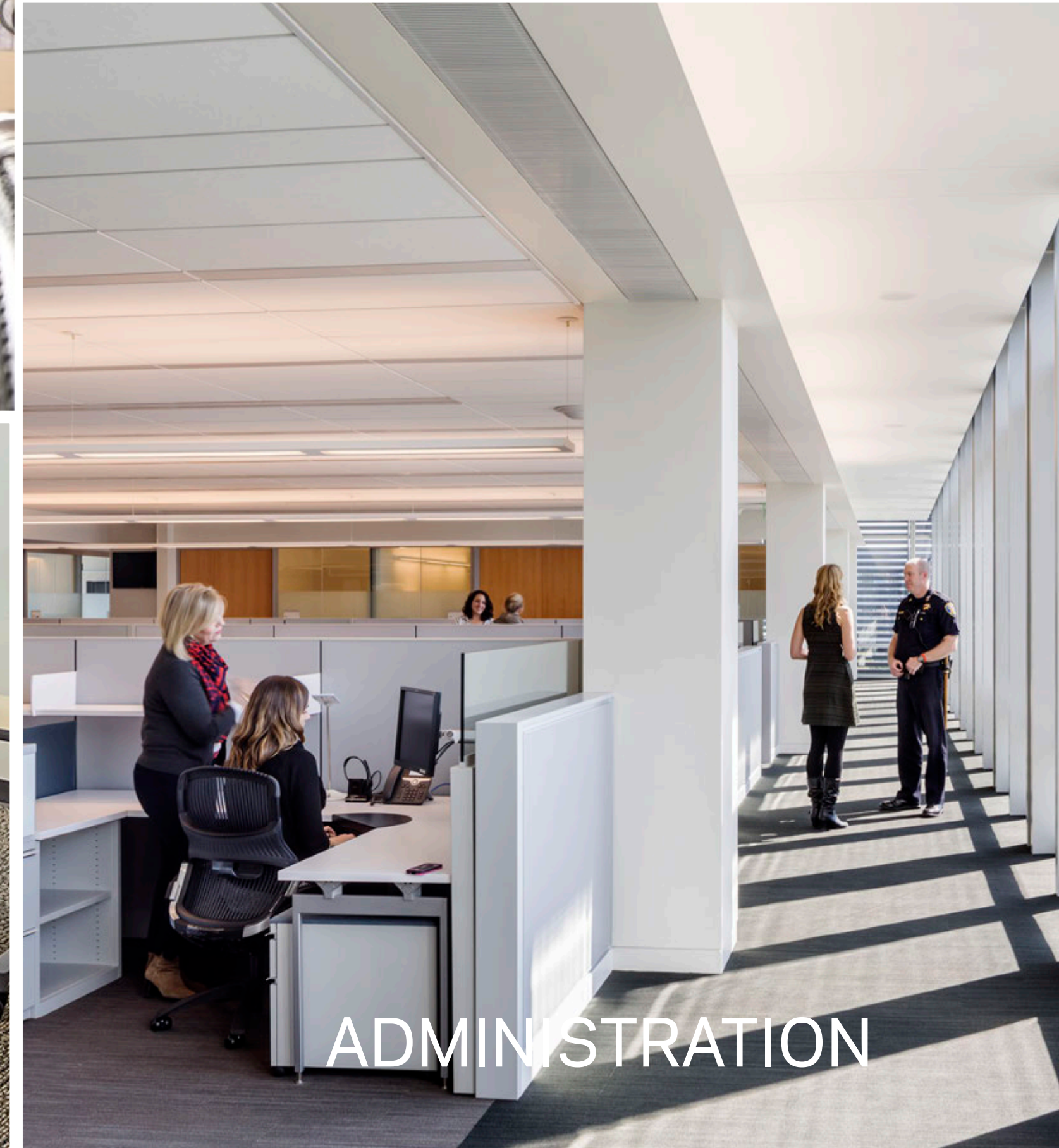
Brooklyn residents might only visit the site infrequently, but the size of the group and diversity of experiences provides a wide range of viewpoints to draw from in order to serve the borough residents' needs.

NEIGHBORS

Neighbors will be in frequent contact with the site. Ideally, the site will fulfill a civic role through programming, education and transparency, connecting to its neighborhood, public and community space.

LOCAL USERS

Users who live within walking distance will have a more casual relationship with the spaces. They may pass through the public space, maybe rest on a bench in the public area.

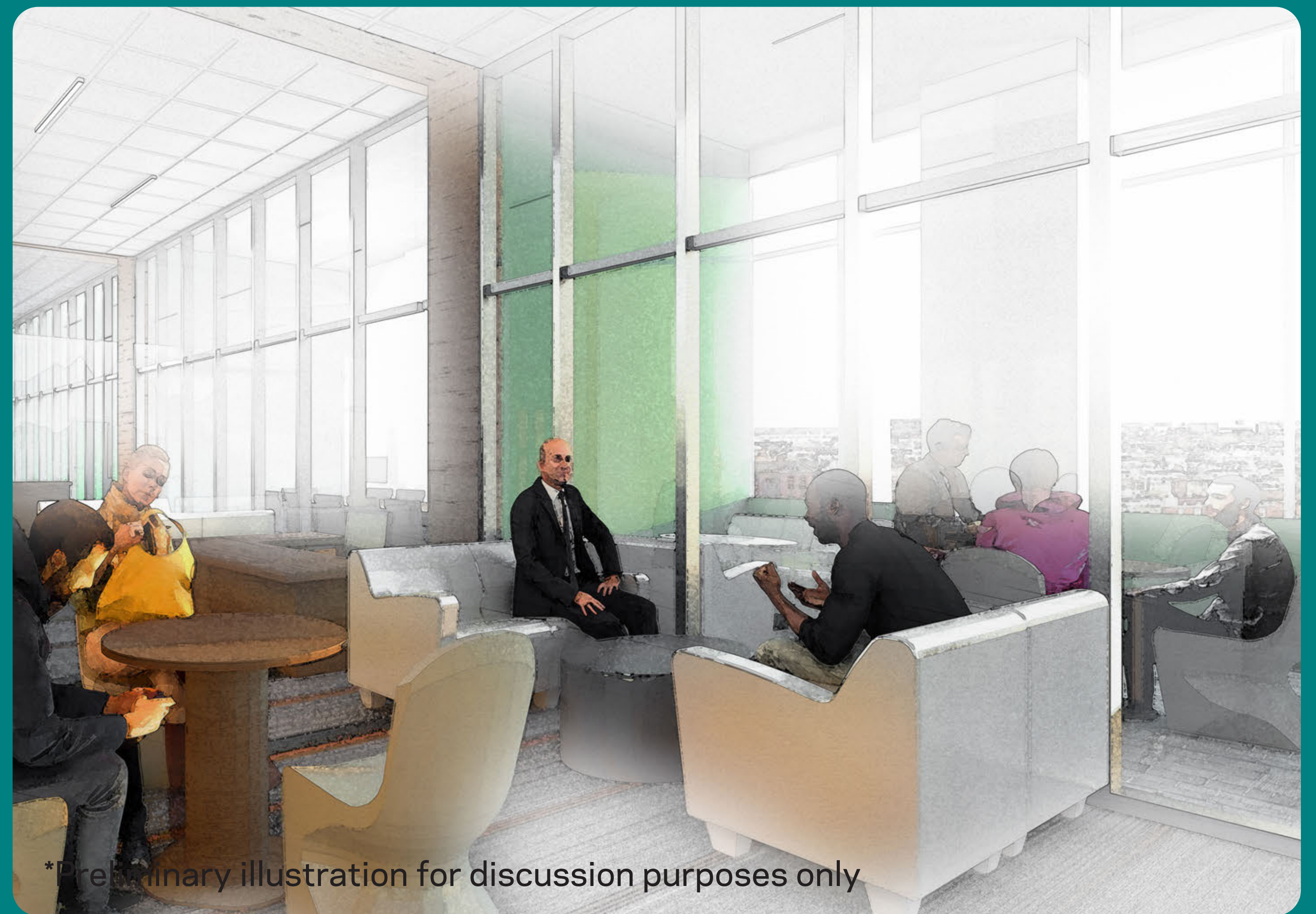


*Preliminary illustrations for discussion purposes only

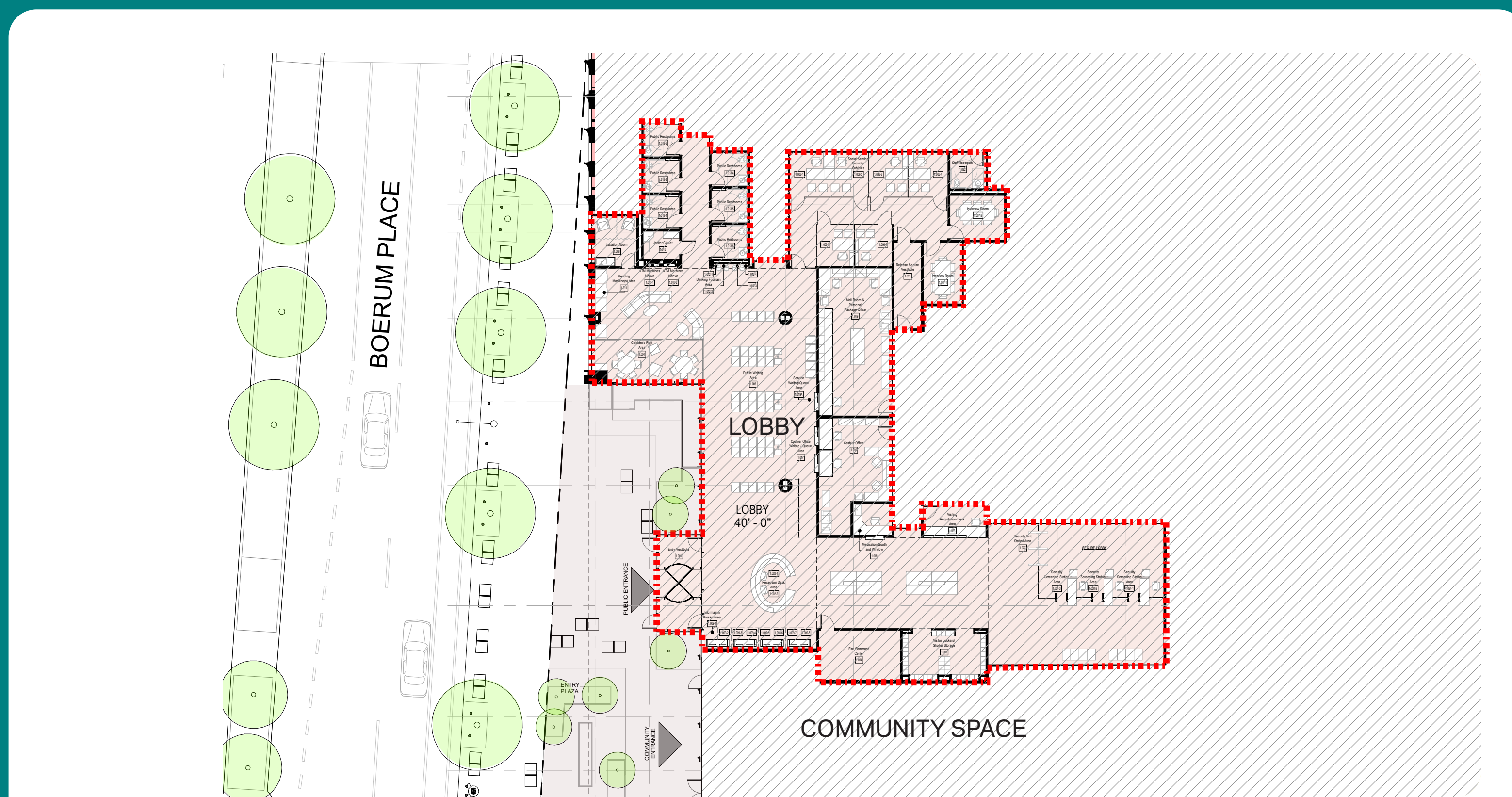
Interior Public Spaces

Design Vision

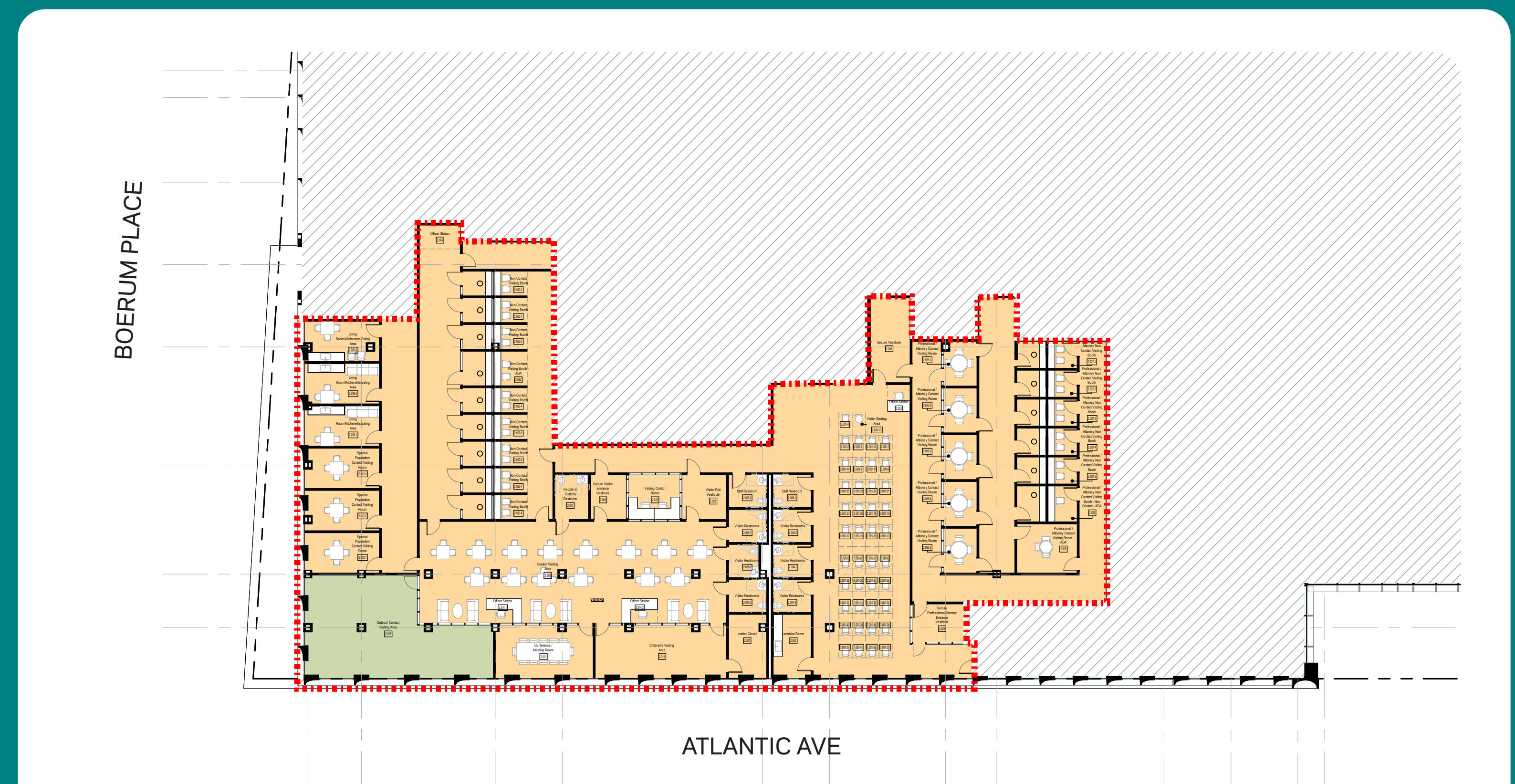
- Design as a civic building with a sense of permanence
- Ensure humane, enriching and secure environment for all occupants and the community
- Integrate wellness & sustainability
- Bring daylight into interior
- Introduce art work and material richness in community space
- Design for intergenerational groups
- Design for equity
- Design for dignity and respect



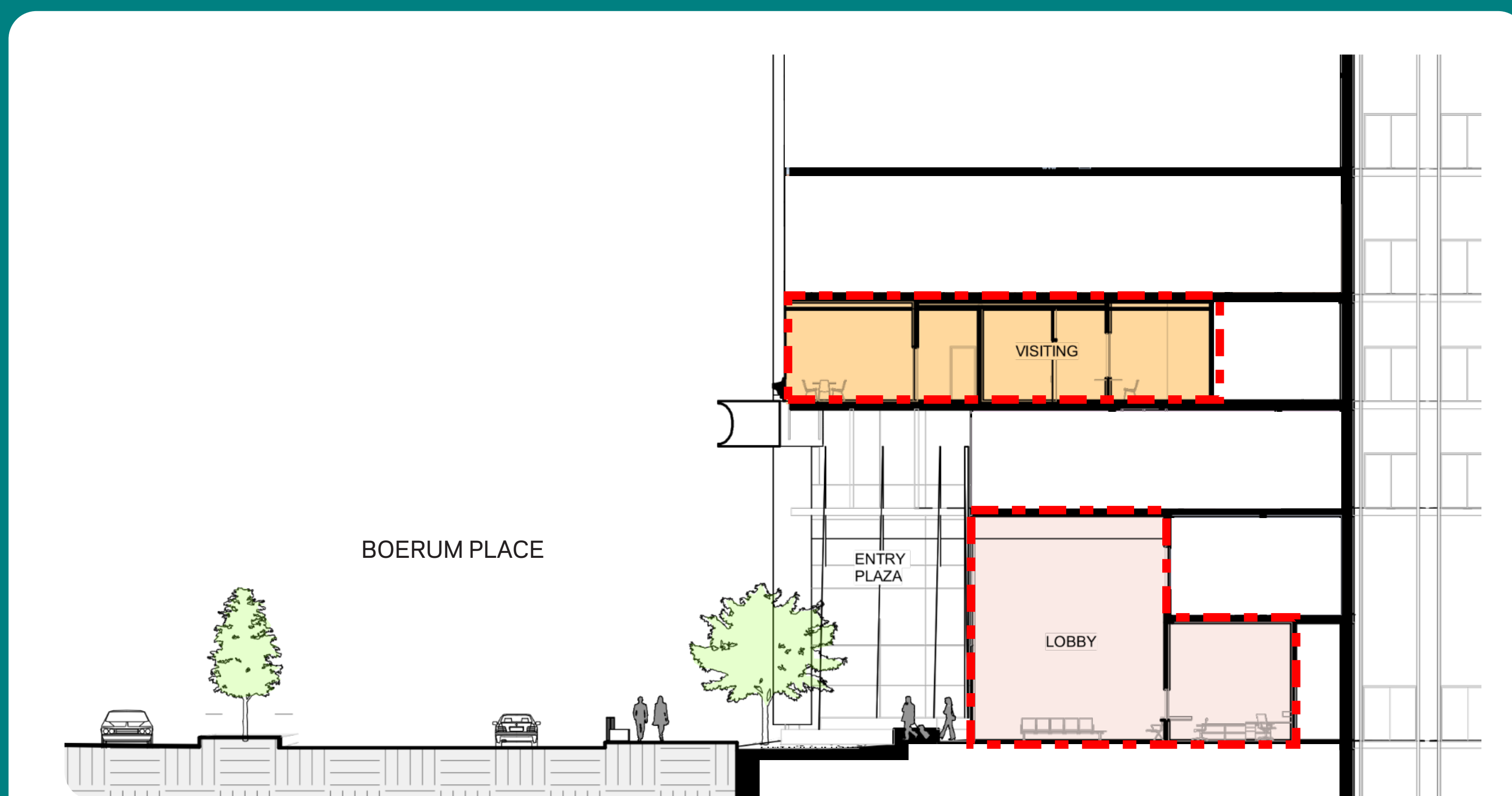
Understand the Interior and Exterior Relationship



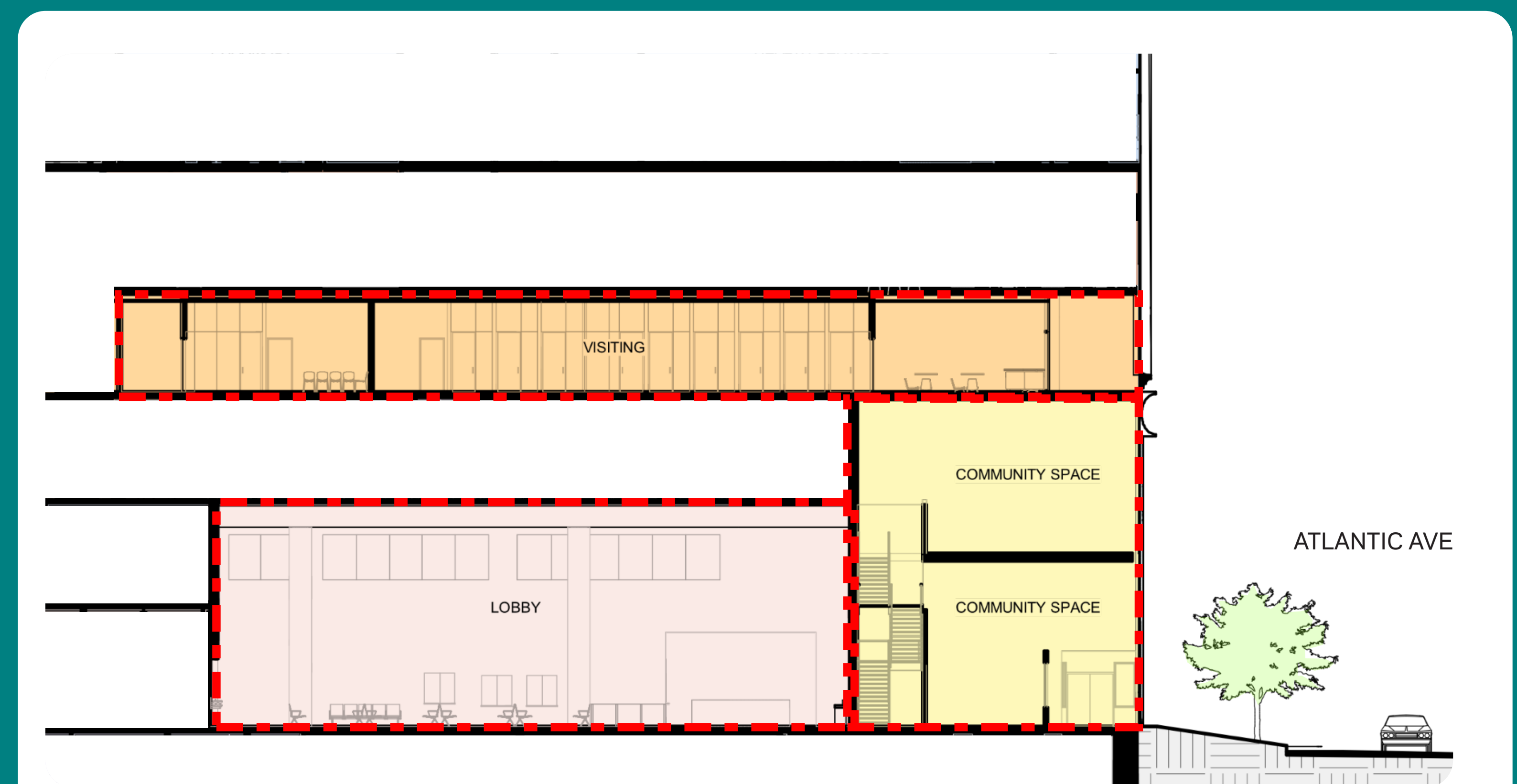
Lobby Floor Plan



Visiting Space Plan



Lobby & Visiting Space Section

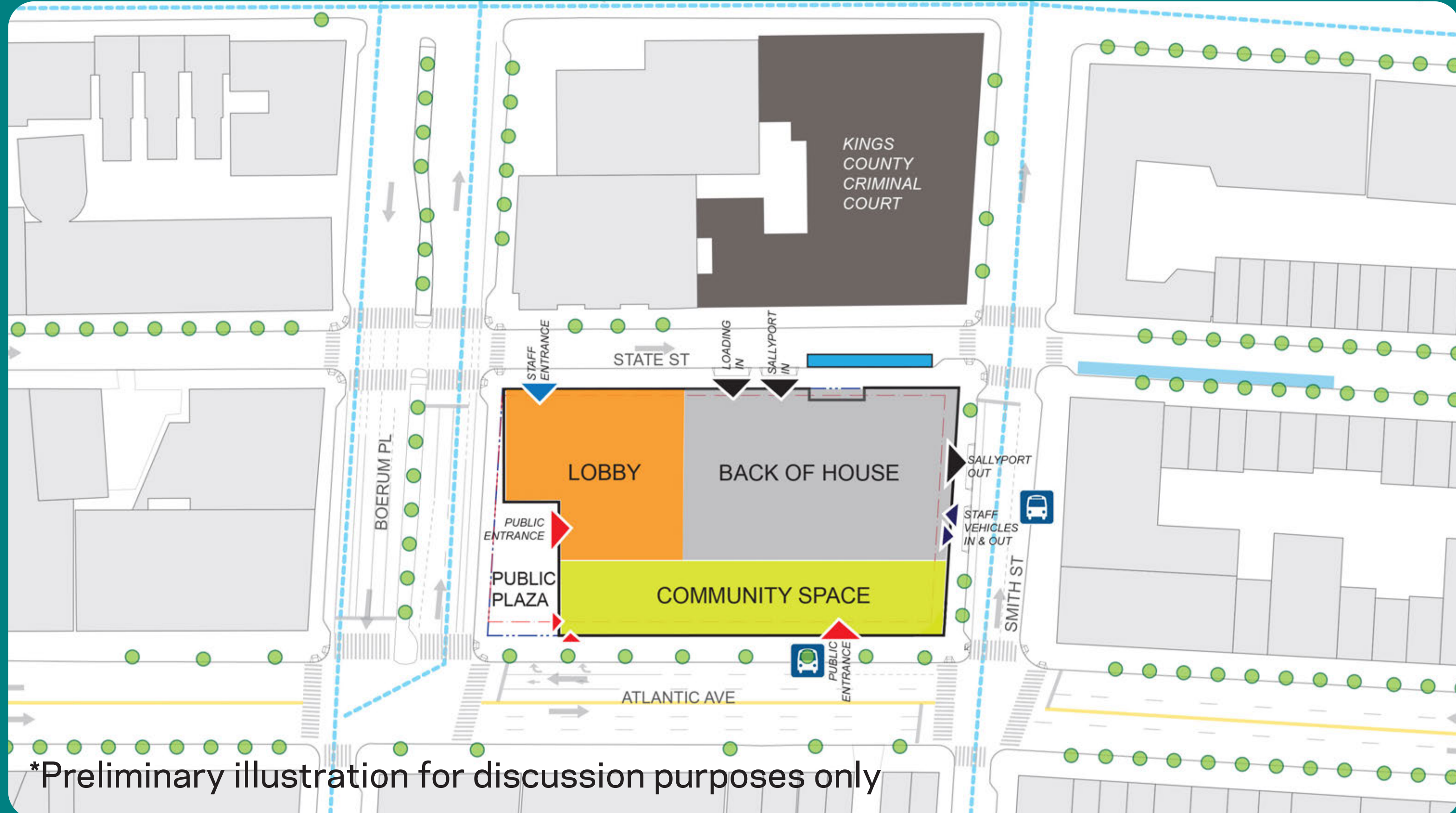


Lobby & Visiting Space Section

*Preliminary illustrations for discussion purposes only

Interior Public Spaces

Connecting Community and Family



Creating a Human-Centric Public and Community Space



Contact Visiting Space Study



Non-Contact Visiting Space Study



Lobby Study

*Preliminary illustrations for discussion purposes only

Interior Public Spaces

Q: What would improve your experience as a visitor?

Human Scale

Likes:

Dislikes:

Color and Texture

Likes:

Dislikes:

Visual Connections

Likes:

Dislikes:

Connection to Nature

Likes:

Dislikes:

Natural Light

Q: What would make you feel welcome inside the public lobby and visiting areas of the building?

Public Lobby

Free lockers
Seating while waiting
bathrooms
Population flow
Interior space capacity
Accessibility
Incorporates a scent so people feel less anxious upon entering
[Scent - specific to reduce anxiety]

Visitor Areas

Adequate Attorney visiting space
5,000 sqft of indoor waiting space for visitors
No lines outside the building
Waiting time - who lines (longer)
Visitation space
Pumping / lactation area for visitors
Private visitation lounge
Sometimes have vending machines that are out of space
What about a cafe?

Children / Family Areas

Child Friendly space
Benefits for families to be closer to loved ones
Create space for children
→ children sized furniture / children friendly seats
Separation bet. children & P.I.C

Other

Public Parking spots
Free lockers
NEED AN ENTRANCE FOR COMMUNITY SPACE ON SITE
Social services space??
CULTURE Break

Other

Community Book Exchange
Temporary housing for people when they're released
Massing of Buildings
Dog run
Comm Cafe / food service?
Let the community decide what the community/public space is used for
Interior spaces should be built with a purpose and utilized the same.