

Interior Spaces

Guiding Principles

- Elements to add visual texture, acoustic buffering, and subtle stimulation
- Sense of autonomy and distinct spaces in dayroom
- Clear visual wayfinding queues
- Variety in materiality, colors, and textures to stimulate the senses without overwhelming them
- Variety of soft lighting to deinstitutionalize the space
- Smaller, more intimate spaces through varying floor finishes and furniture types



Understanding Design Grounded in Dignity and Respect



Designing for Equity

- Design buildings and spaces where all human needs are met in an equitable and sustainable manner.
- Foster communities where all people have equal access to shelter, health and nature.
- Design spaces that enrich and inspire all people.
- Design safety and security throughout the facility.



*Preliminary illustrations for discussion purposes only

Interior Spaces

Design Vision



SAFETY

Throughout the facility, people feel physically and psychologically safe



TRUSTWORTHINESS + TRANSPARENCY

Decisions are made with transparency and with the goal of building and maintaining trust



PEER SUPPORT

Individuals with shared experiences are integrated into the organization and viewed as integral to service delivery



COLLABORATION

Participants work together to make determinations on programs, schedule and activities that affect people in the space



EMPOWERMENT

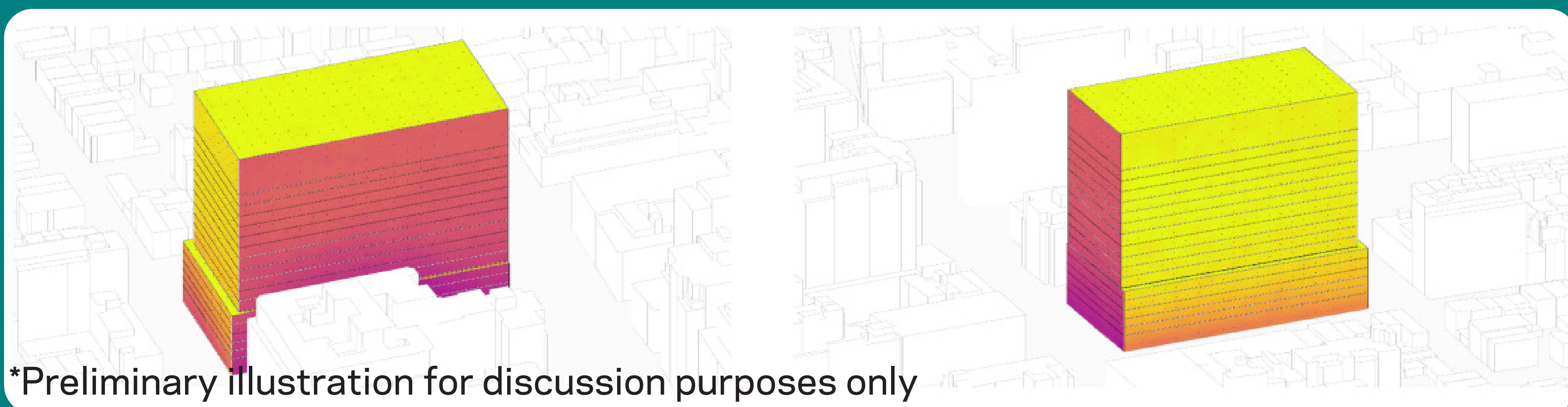
People's strengths are recognized, built on, and validated – this includes a belief in resilience and the ability to heal from trauma



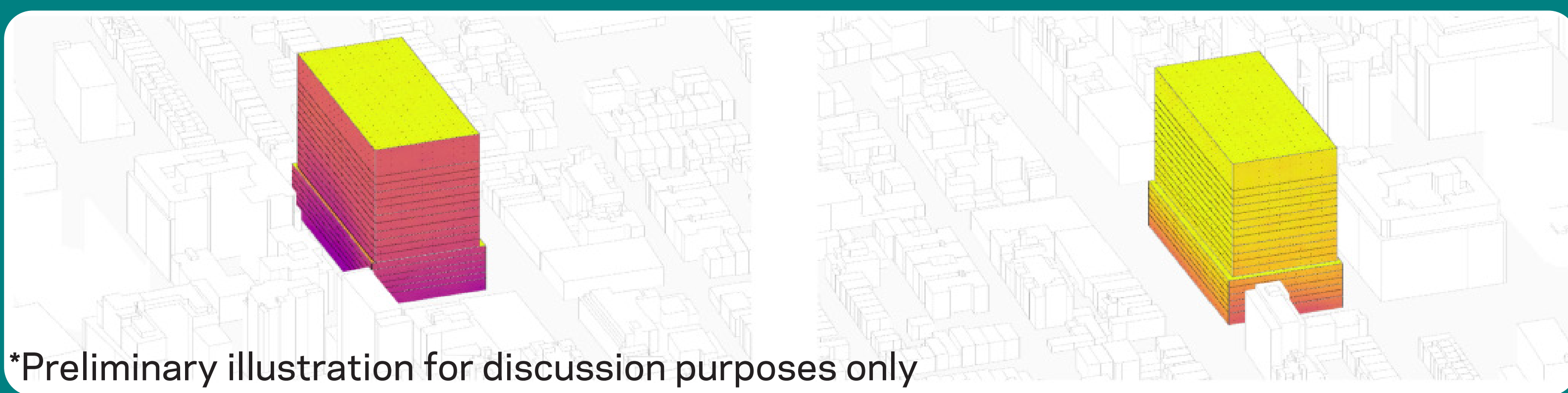
RESPONSIVENESS

Biases and stereotypes (e.g., based on race, ethnicity, sexual orientation, age, geography) and historical trauma are recognized and addressed

Understanding the Relationship to Programming, Daylight and Outdoors

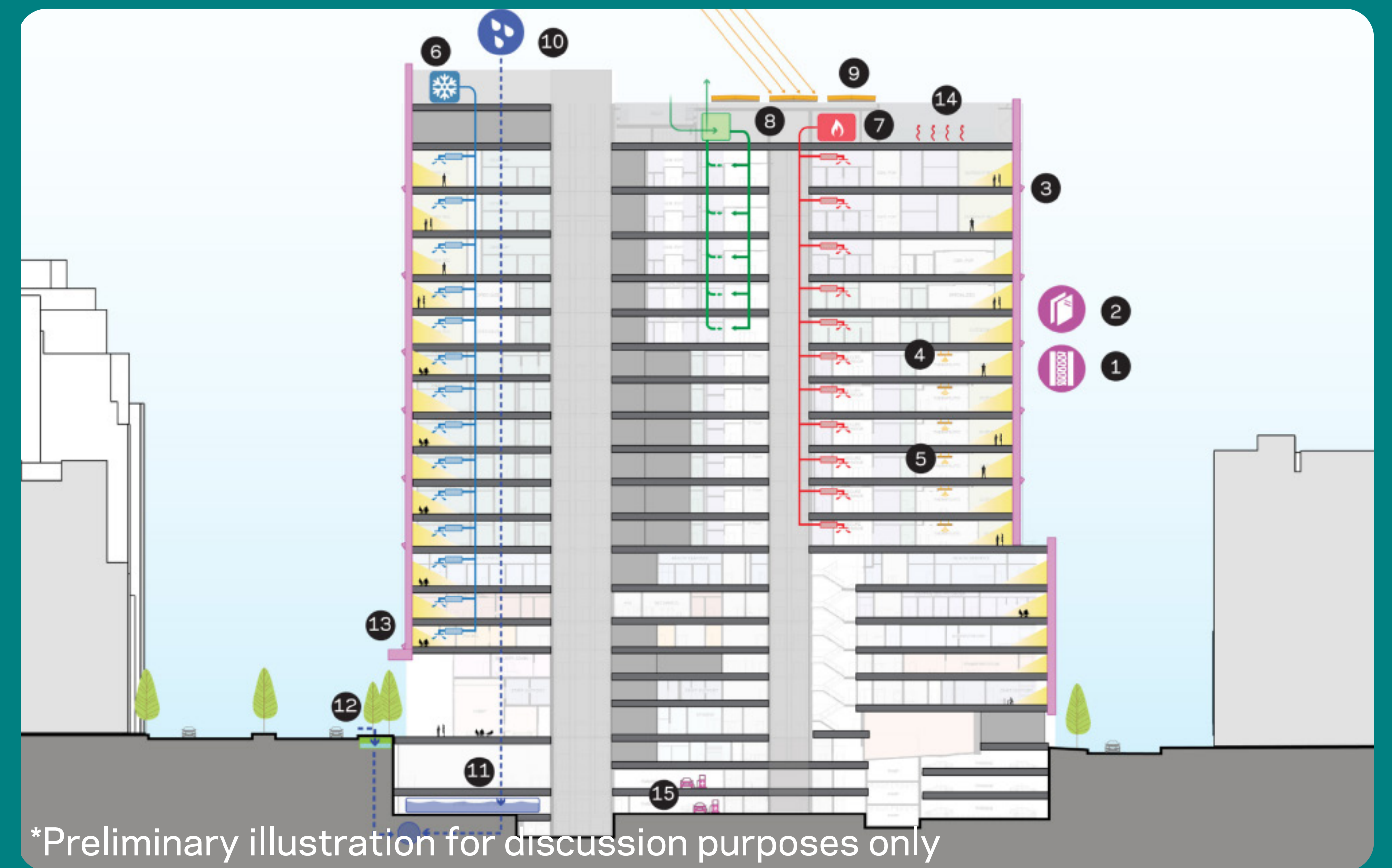


*Preliminary illustration for discussion purposes only



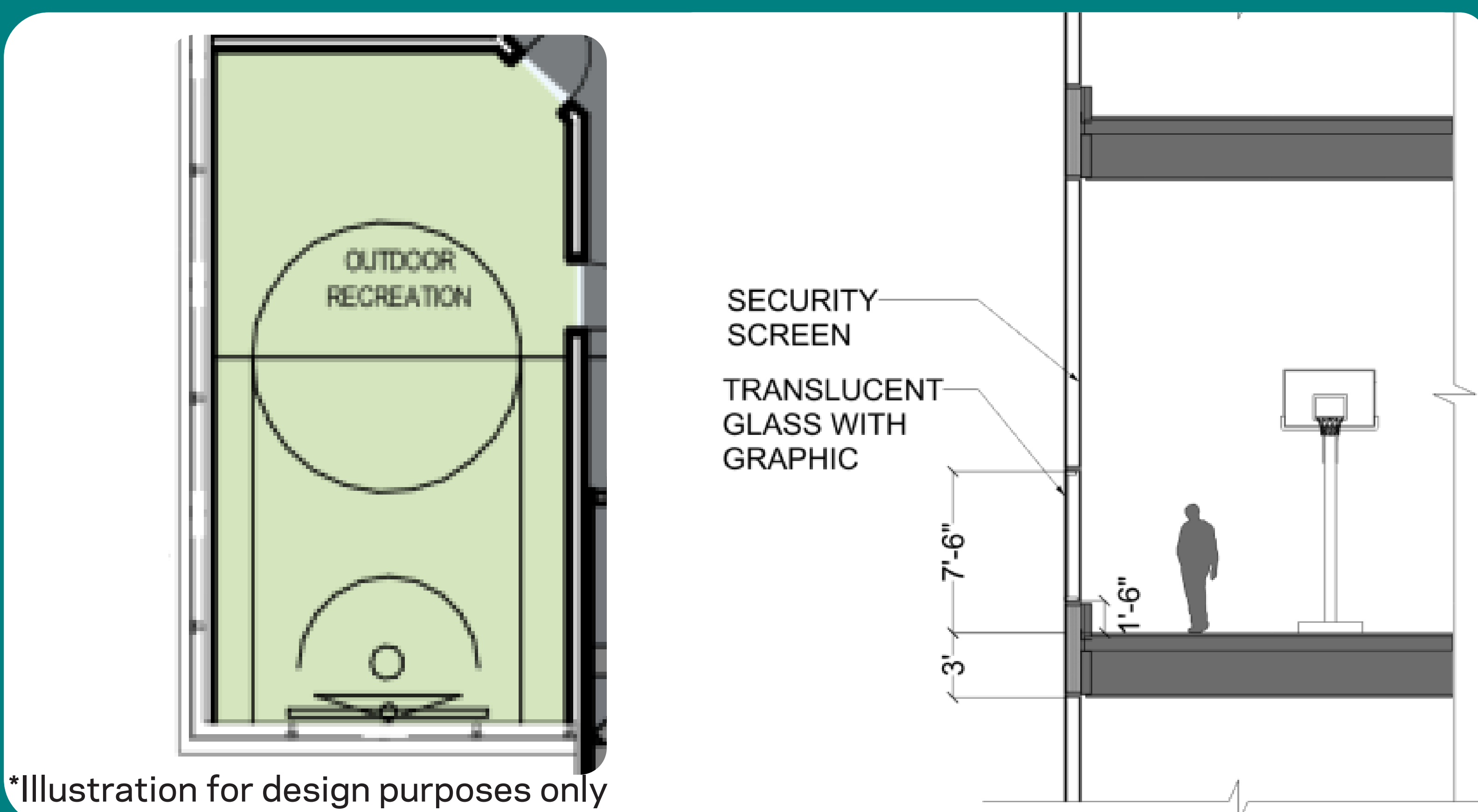
*Preliminary illustration for discussion purposes only

Annual Solar Radiation Analysis



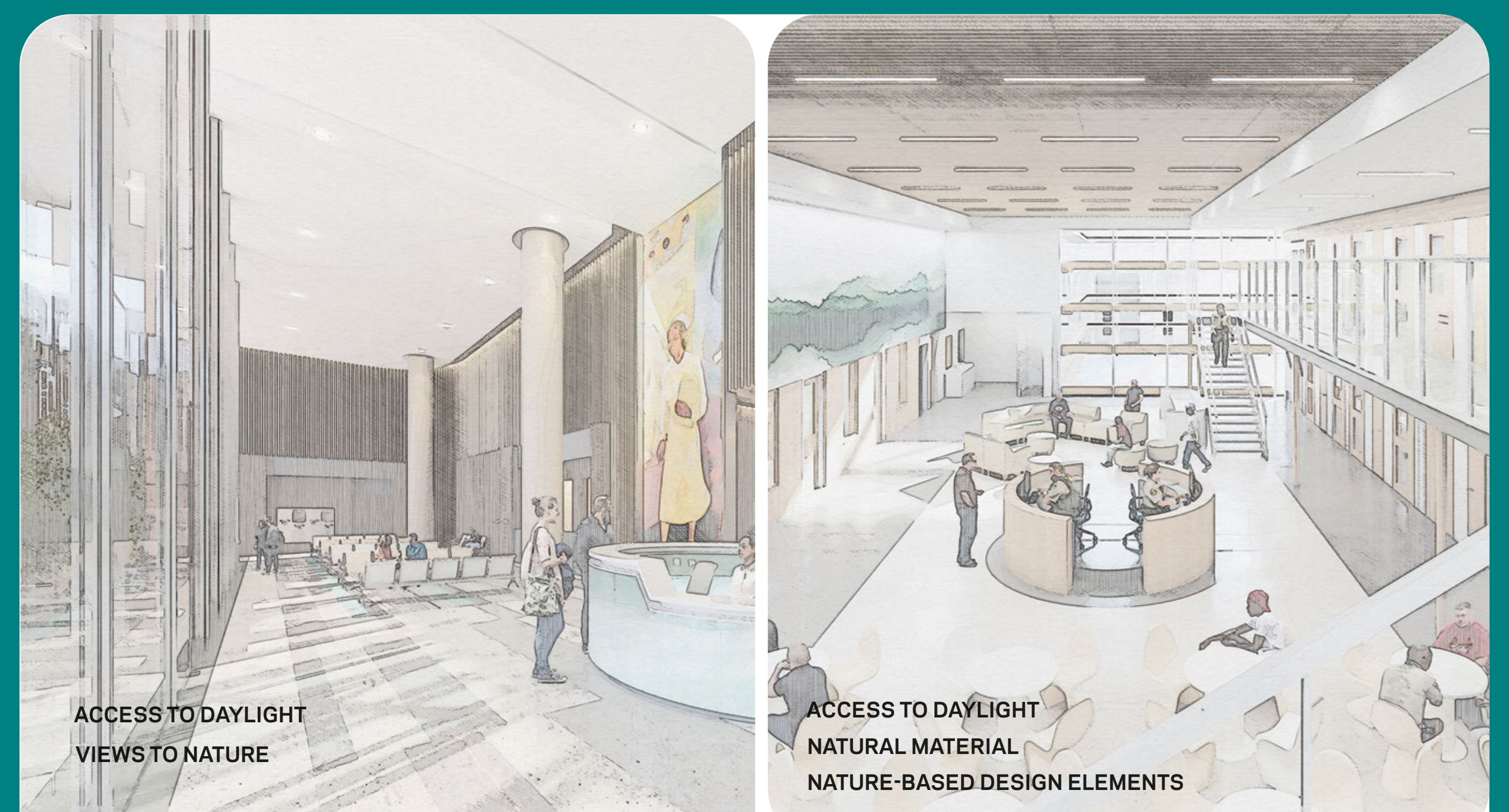
*Preliminary illustration for discussion purposes only

Integrated Solutions



*Illustration for design purposes only

Court Daylight Strategy



*Preliminary illustration for discussion purposes only

Human-Centric Design

*Preliminary illustrations for discussion purposes only

Interior Spaces

Creating a Humane Environment

- Natural light
- Human experience
- Access to outdoor views
- Medical treatment
- Counseling
- Programs & education
- Variety of materials, colors & textures



*Aspirational Precedent of HOK Chicago Facility

Creating a Human-Centric Interior Design



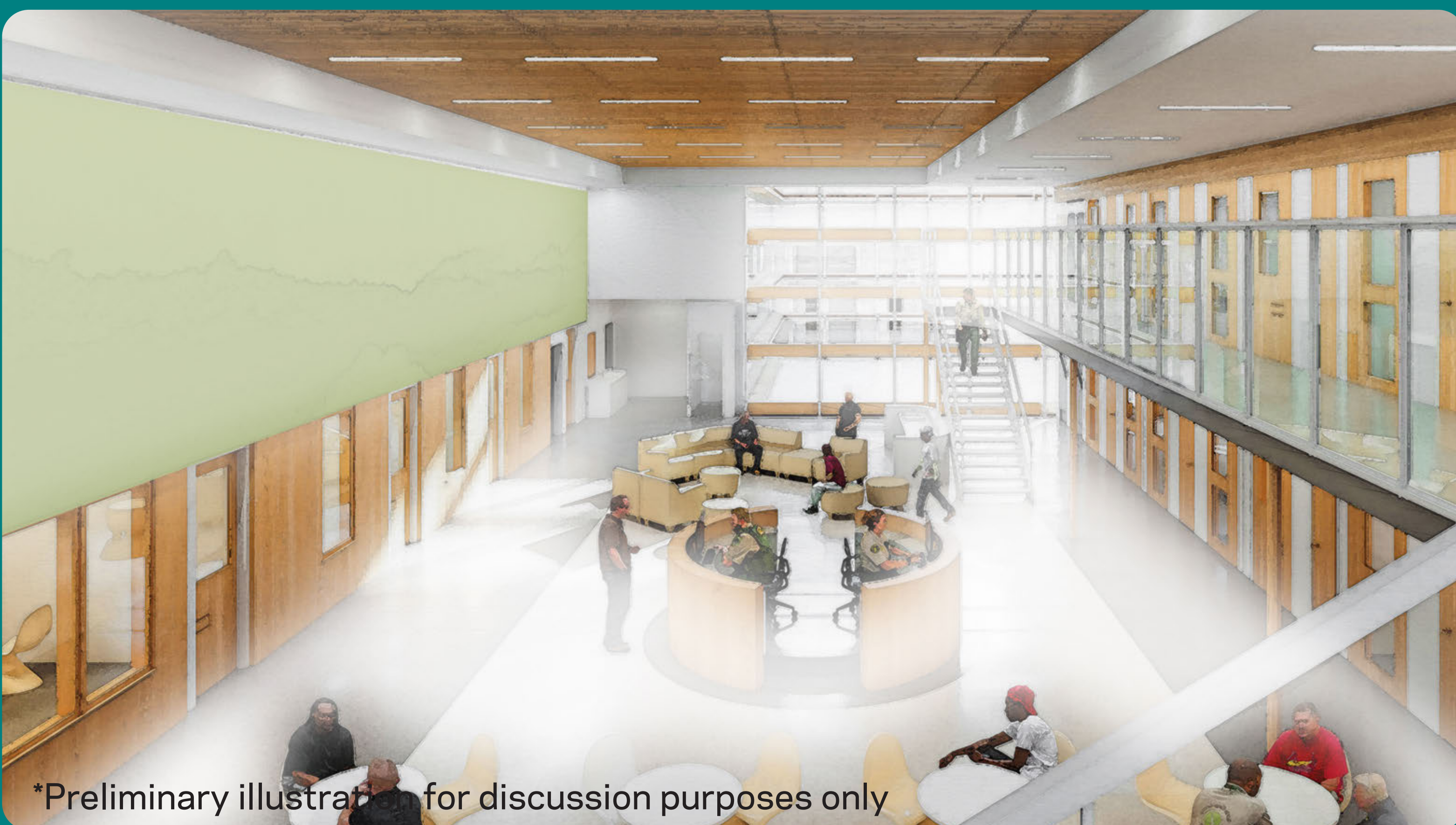
*Preliminary illustration for discussion purposes only

Dayroom at Single-Tier Housing Study



*Preliminary illustration for discussion purposes only

Staff Dining Study



*Preliminary illustration for discussion purposes only

Dayroom at Double-Tier Housing Study



*Preliminary illustration for discussion purposes only

Recreation Yard Study

*Preliminary illustrations for discussion purposes only

Interior Spaces

Q: What would provide a calm, safe, and stress reducing environment?

Human Scale

Likes:

NO "Bubble"
for DEC
officers

No
bubble
for officers

Dislikes:

Double tier
unit -
very unsafe

Color and Texture

Likes:

Dislikes:

Still quite
sterile
↳ Green
Plants?

Visual Connection

Likes:

Dislikes:

Concerned
about ties -
medical
respond to
crisis

Connection to Nature

Likes:

Dislikes:

"OUTDOOR"
SPACE IS
NOT ACTUALLY
OUTSIDE

More
Green
outdoor
space

DITTO
Access to
fresh air
is needed

More thru health
throughout area
from roof!

Q: How can the design of the spaces provide a sense of dignity and reflect an everyday living environment?

Living Spaces

Actual
fresh
for residents

Natural light
in all living
quarters/cells
↓
Direct light

Adequate
therapeutic
space/units
keep at 40%
(as it is in original
design)

Program
space on
every
housing

No bars on
windows

Windows need to
thought process
mental health over
half population has
a MH concern -
supplies across
all areas

Direct access
to clinic/
medical
space

NYS DEC, NYC DEC, &
FEDERAL CONSENT
DECREE MANDATE
ONE HOUR DIRECT
ACCESS TO FRESH
AIR & SUNLIGHT
(outdoor recreation)

Program space
should include
space for
private groups/
classes w/ jo

Sports
TV

Daylight
in every
cell

Concerns for
low sound travels
through by open
spaces
Sound buffer sound

Natural
material
all
units

Enhanced
supervision
units are
solitary
confinement

Program space
should include
space for
private groups/
classes w/ jo

Other

Facility for
those who have
mental health
condition.

Staff Spaces

Other

POLL SITE
FOR THOSE
DETAINED?

We don't want
tiered MH
units -> dangerous
for folks w/
SMI

Too Many
mezzanine
levels - No
condoize to
reducing population
objectively

Agree

Plenty of lobby
space for visitors
to line up to
escape the weather
while waiting
clear security

How will the program
insure appropriate
and proper usage of this
design to be humane?

What is the
plan for food
& what space
needs are associated
with that plan?

Will there be
an onsite
kitchen &
dining area?

Intake
area
- access to
water and
private bathrooms

Design
that makes
isolation
challenging is
calm!
impossible