

Public Realm

Guiding Principles



Celebrate Space as a Civic Asset

Relate to both urban and human scales and create connections that respond to site and streetscape activation and support pedestrian activity that is open and accessible.



Respond to Urban Relationships

Consider urban gateways by framing views and vantage points from the pedestrian experience and consider user types in creating a sense of scale in an inviting landscape.



Utilize Streetscapes as Open Space

Create an inviting public realm that supports pedestrian flows. Draw visual interest and promote social interaction while activating the street frontage.



Lead with Dignity in Design

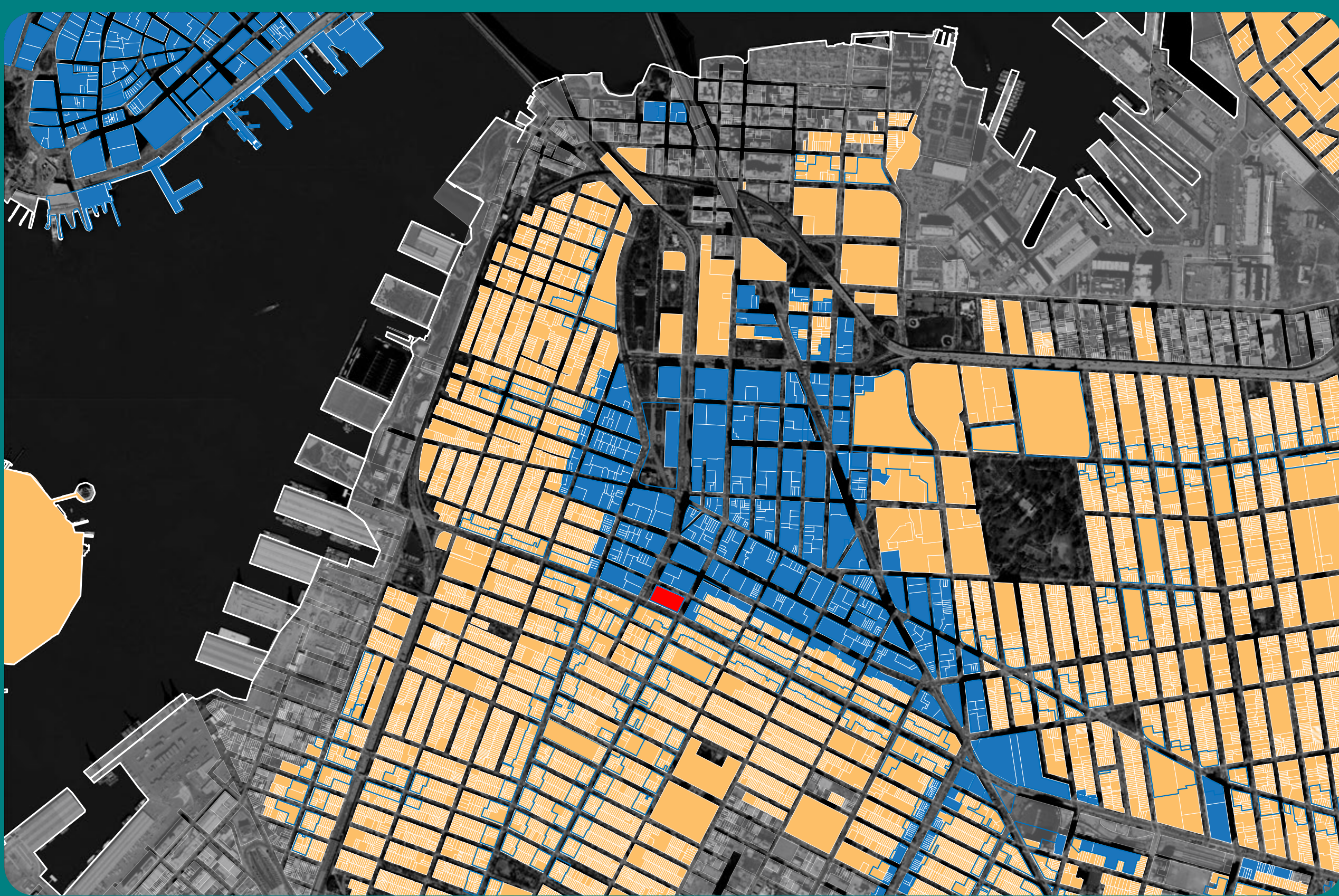
Welcome visitors and users with an engaging experience while creating a comfortable and calming environment.



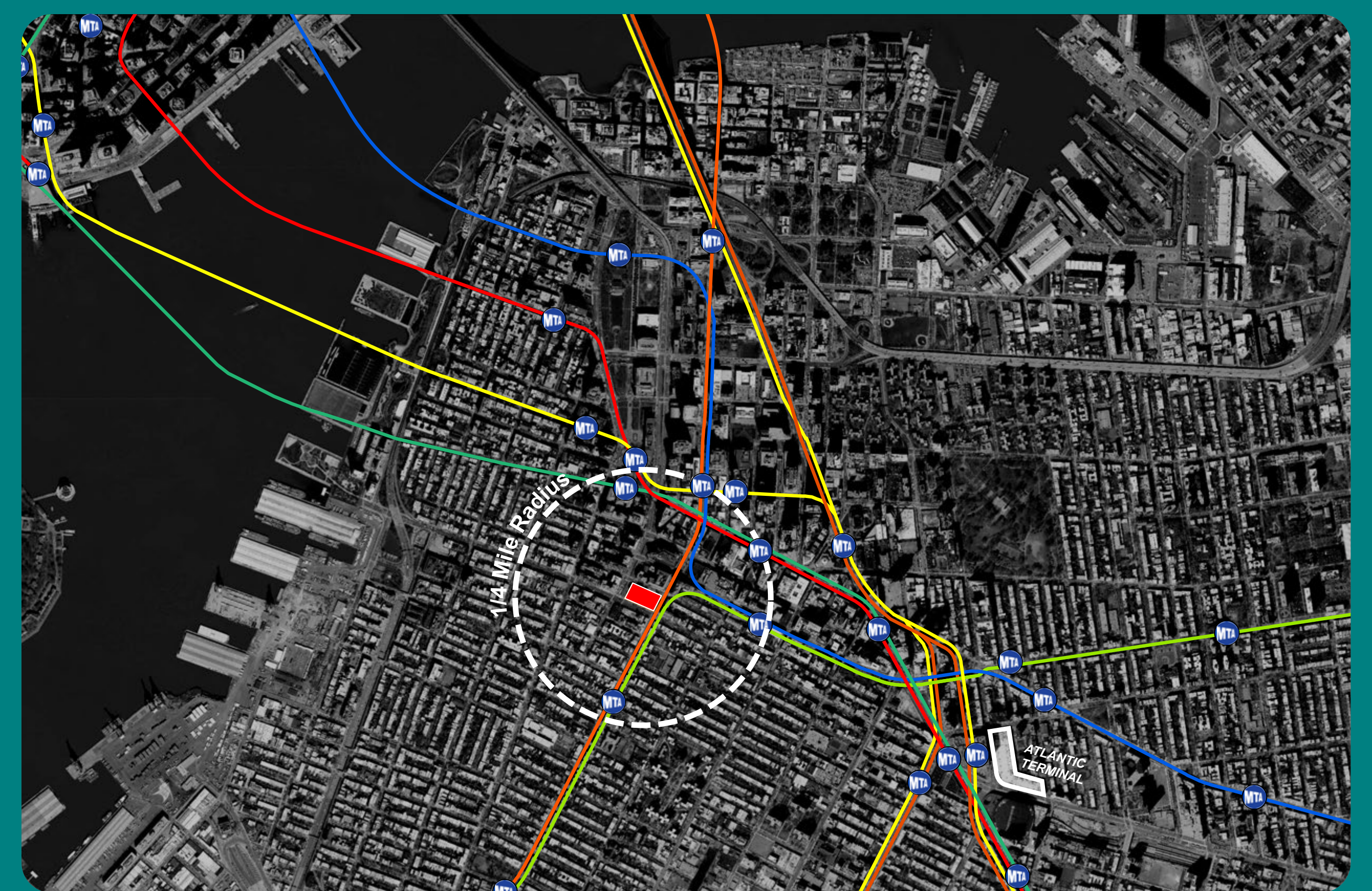
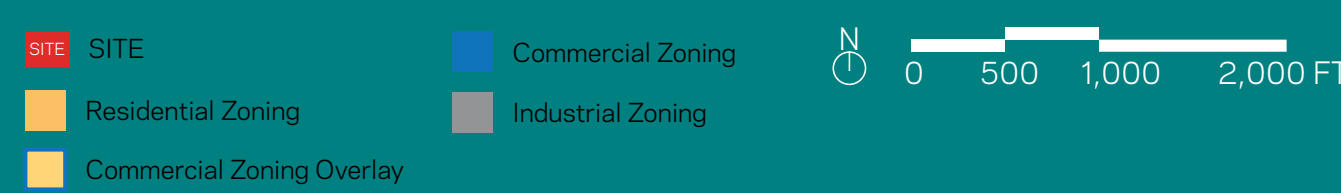
Develop Supportive Environments

Convey dignity and respect through high-quality design while ensuring safety and security. The environment's configuration should grant a sense of personal agency and foster well-being.

Understanding the Community Context



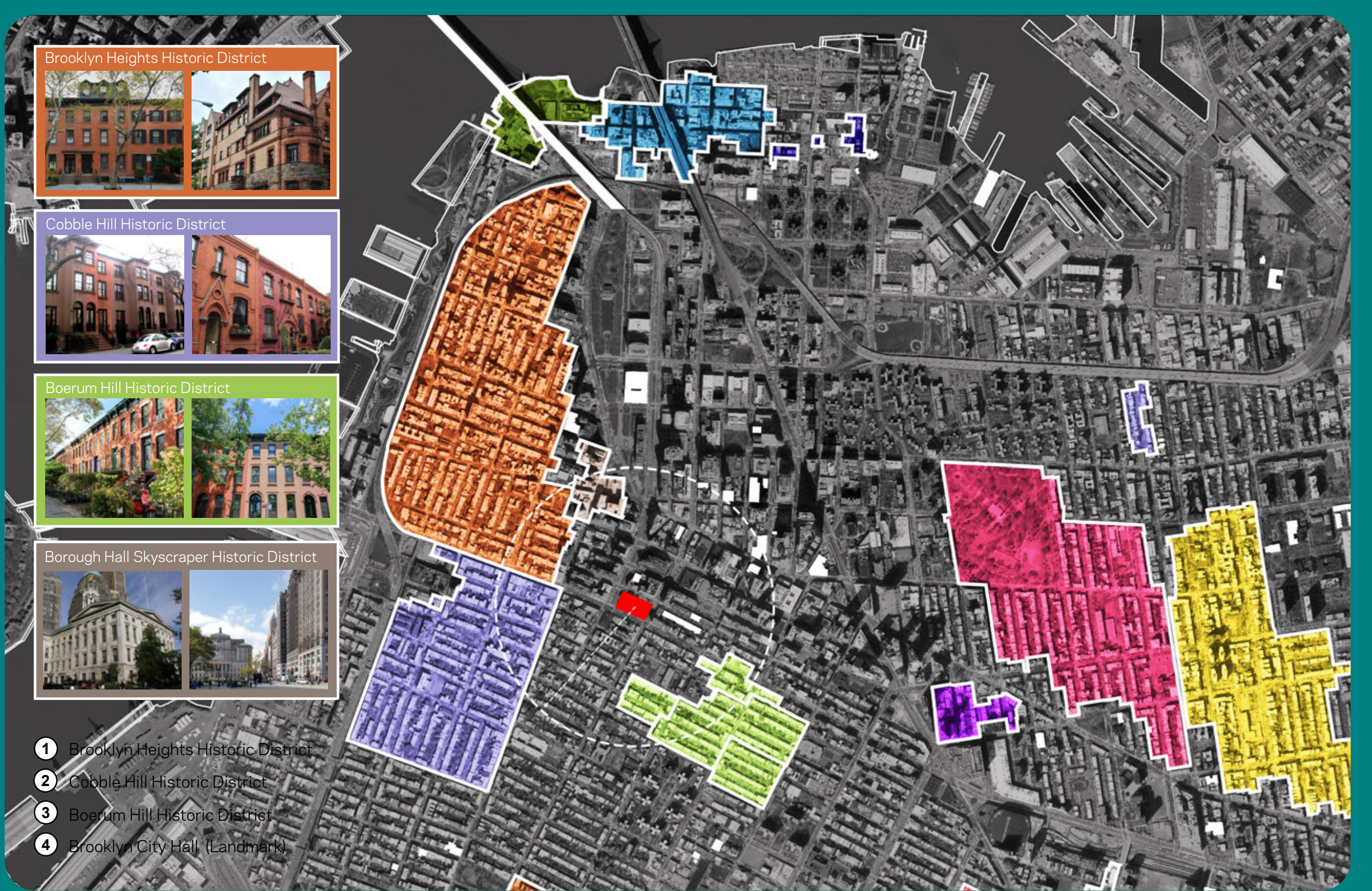
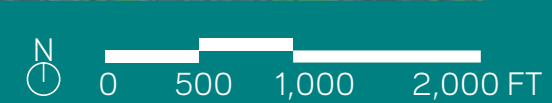
Zoning



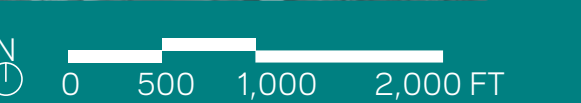
Subway Access



Open Space and Street Trees



Community Historic Assets



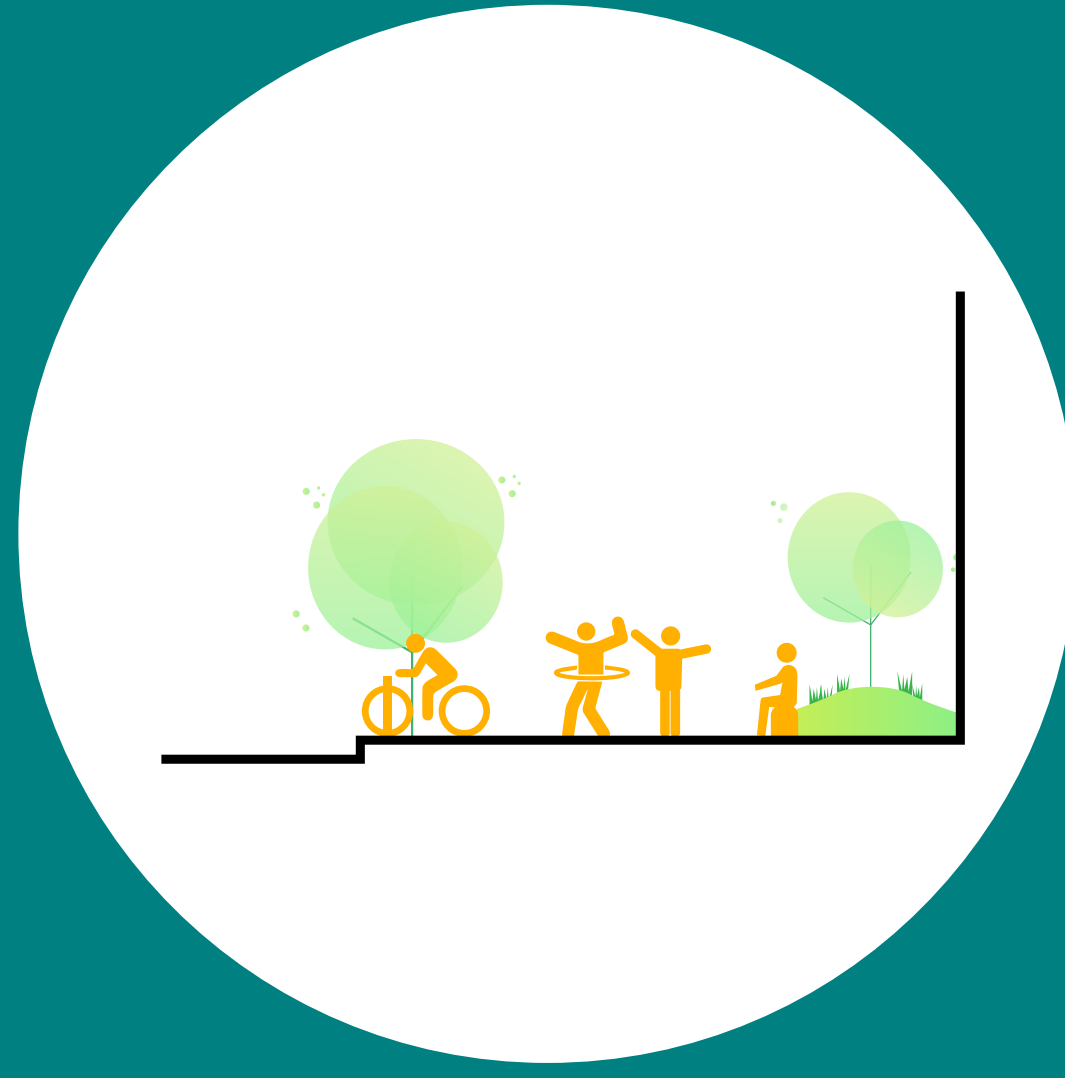
Public Realm

Design Vision



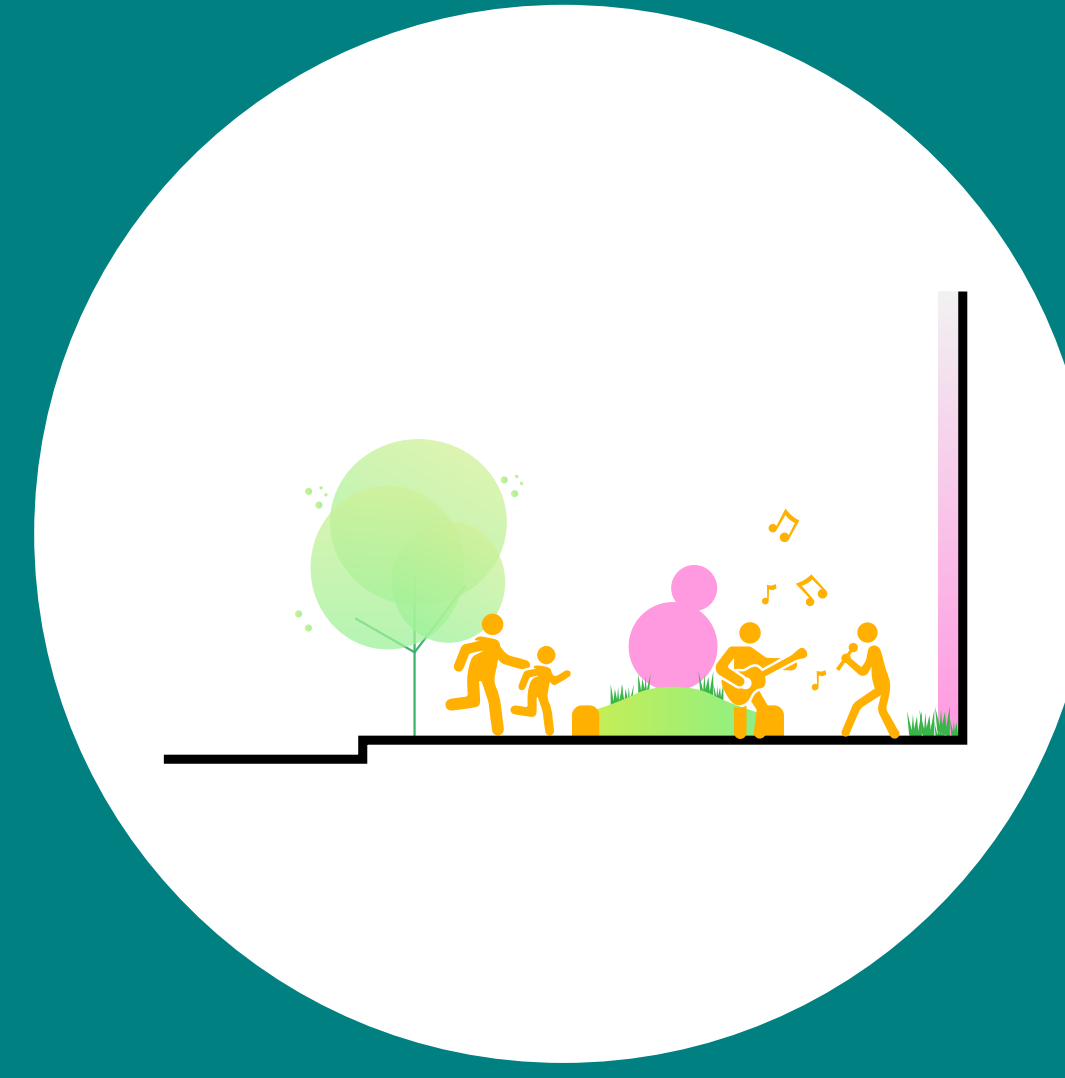
Initiate a Climate Responsive Streetscape Design

Design streetscapes to help mitigate the adverse effects of climate change, including permeable paving and abundant street trees to improve air quality and reduce the urban heat island effect.



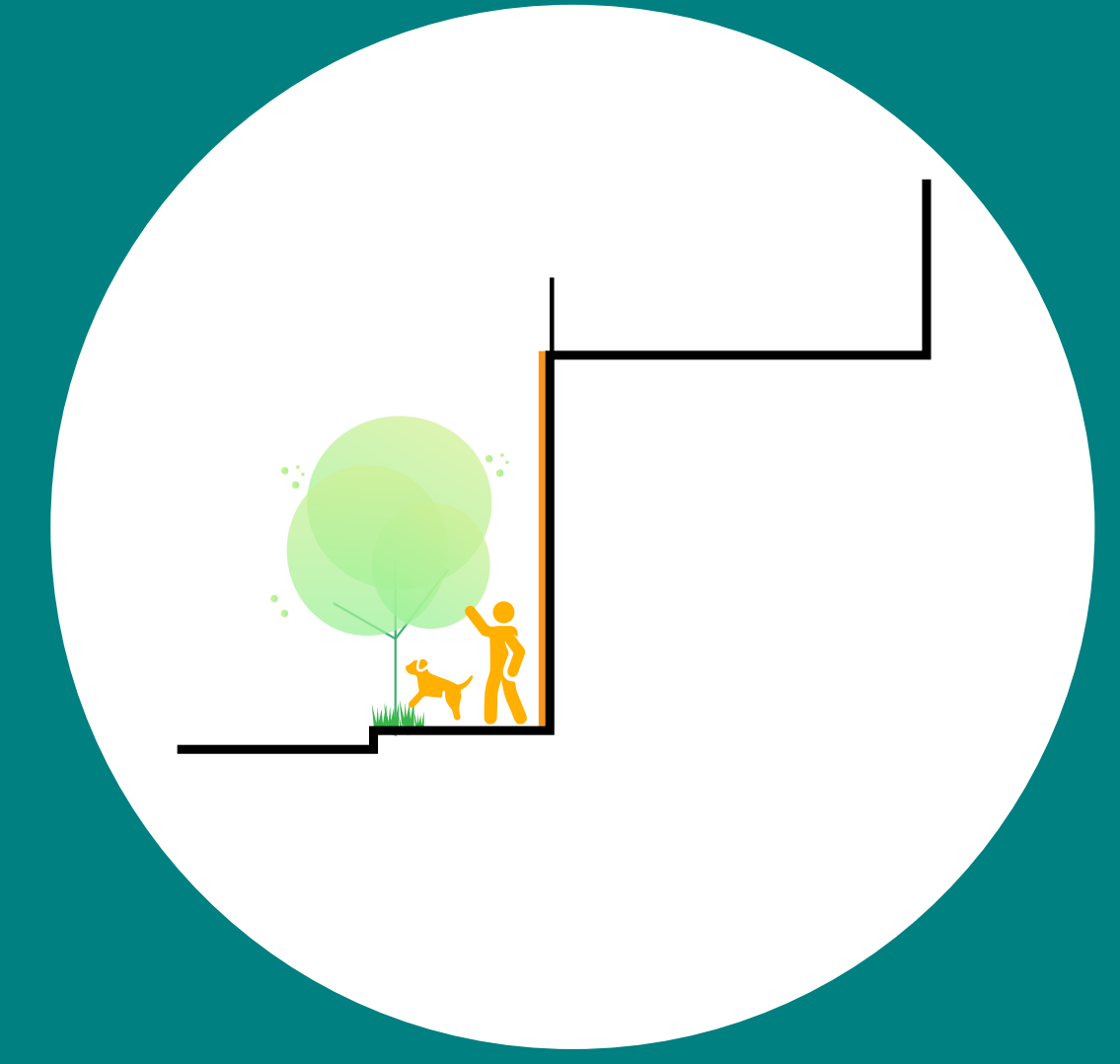
Build Continuity in Design Throughout the Public Realm

Provide streetscape design elements that are to be consistent with the Downtown Brooklyn Partnership's standard to help build continuity in the urban public realm while creating a welcoming user experience.



Integrate Art and Educational Opportunities

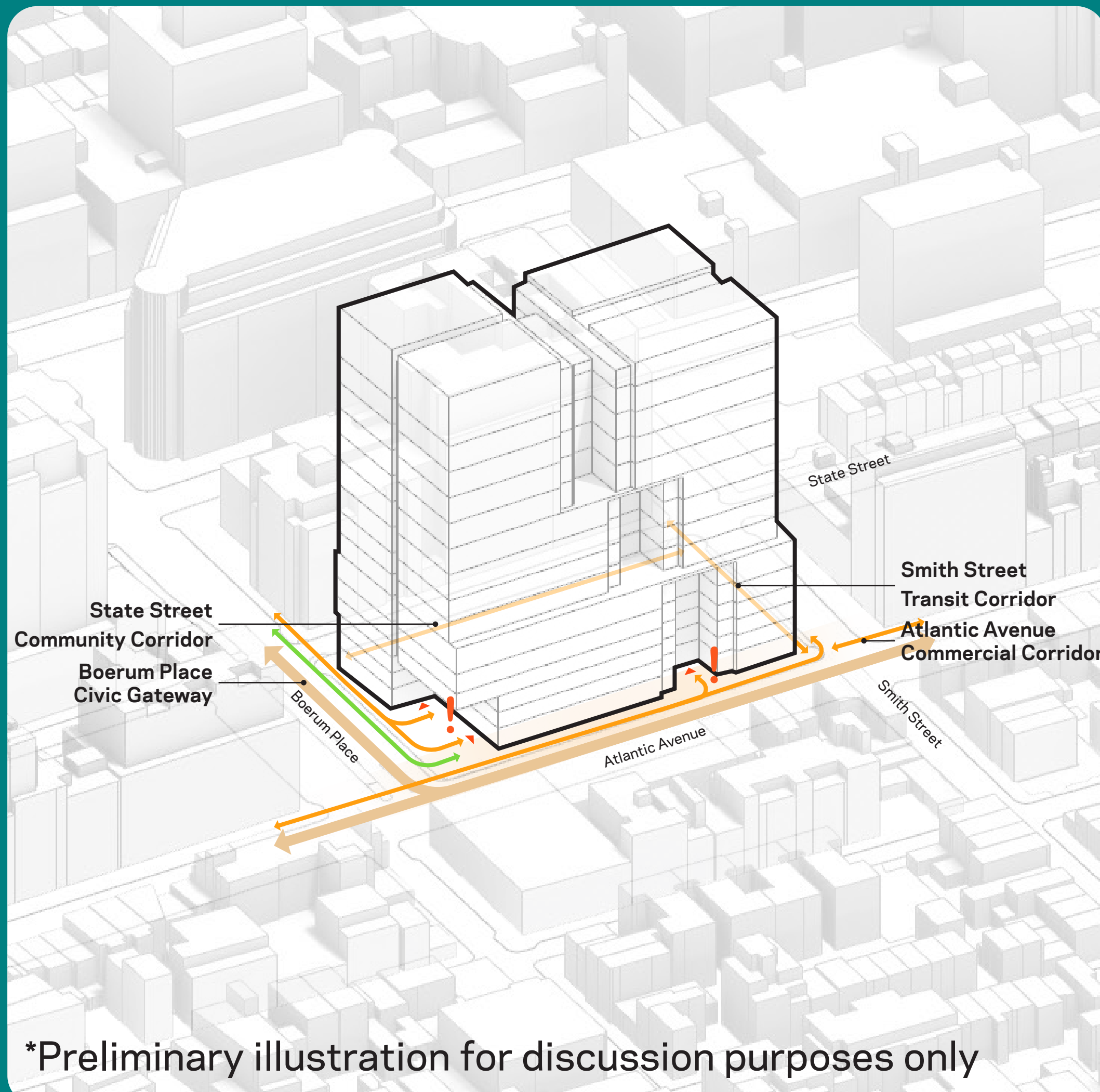
Create opportunities for integrated art and educational purposes through design details that allow users to engage with the public realm, creating an enhanced user experience for all.



Maximize Landscape and Open Space

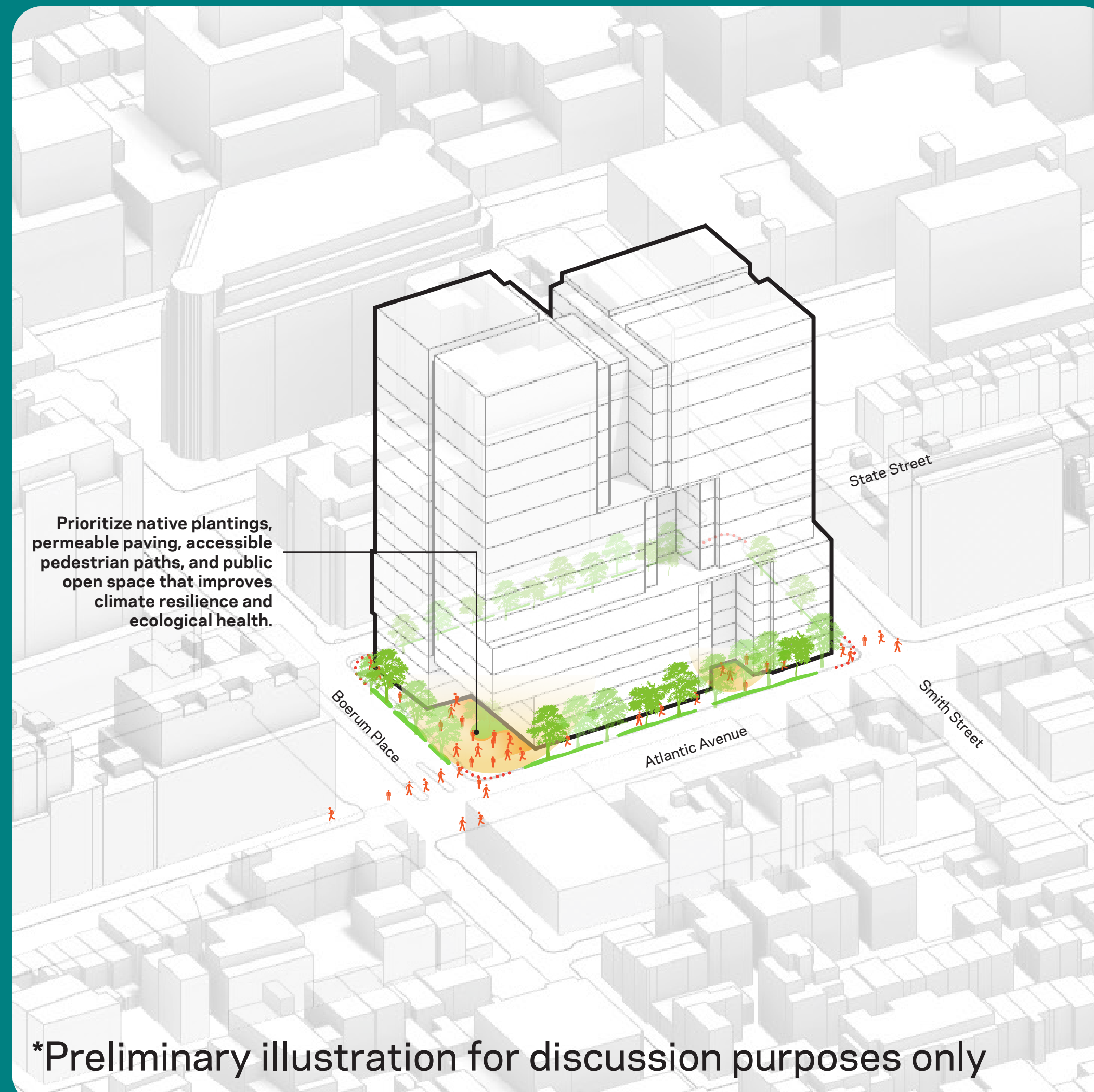
Provide visual connections to landscape elements to foster a safer, more supportive environment for all to enjoy. Increase tree and landscape coverage to draw visual interest while creating a pleasant environment.

Understanding the Community Context



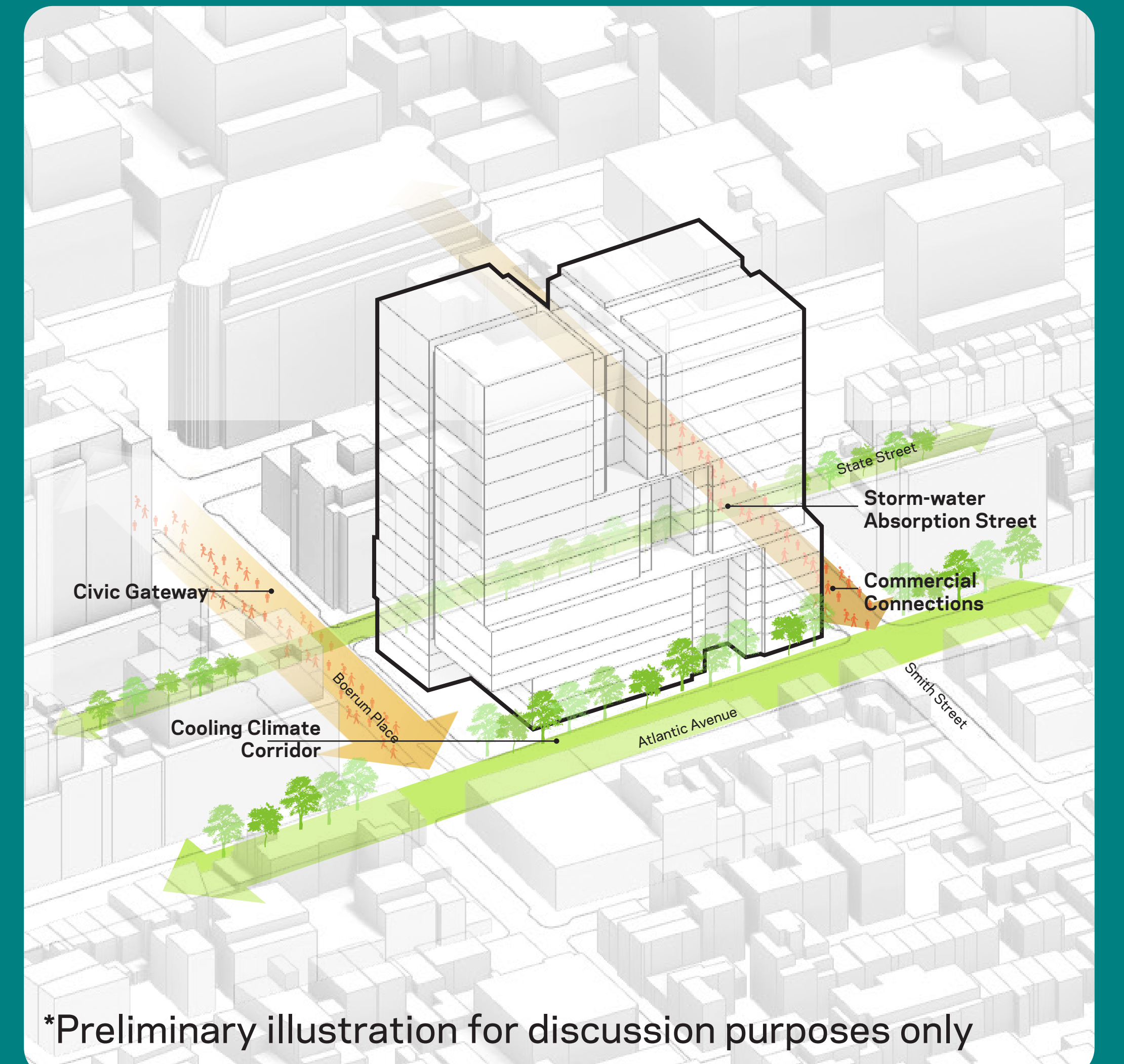
*Preliminary illustration for discussion purposes only

Improve Public Realm Connections



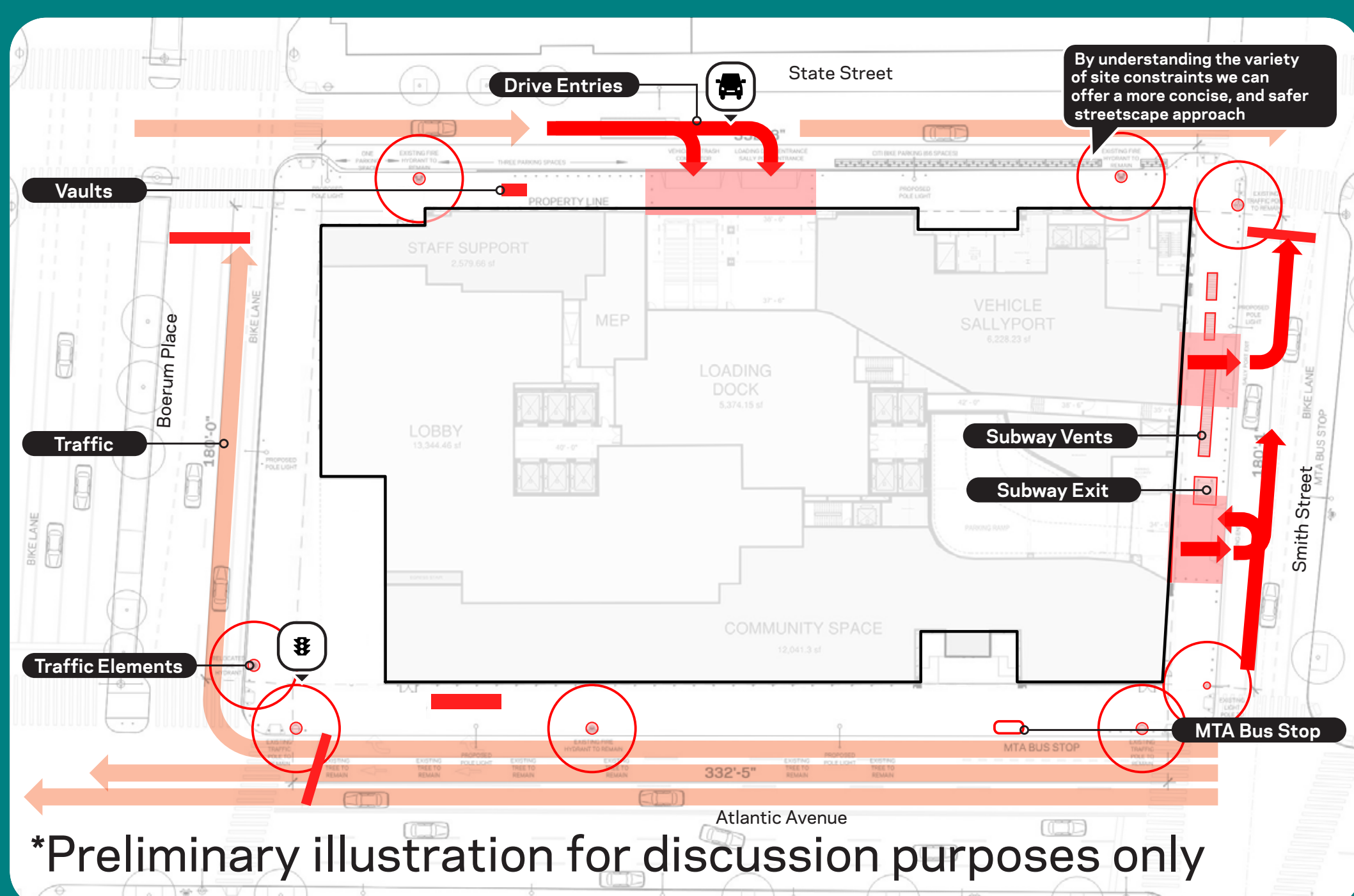
*Preliminary illustration for discussion purposes only

Enhance Civic Experience



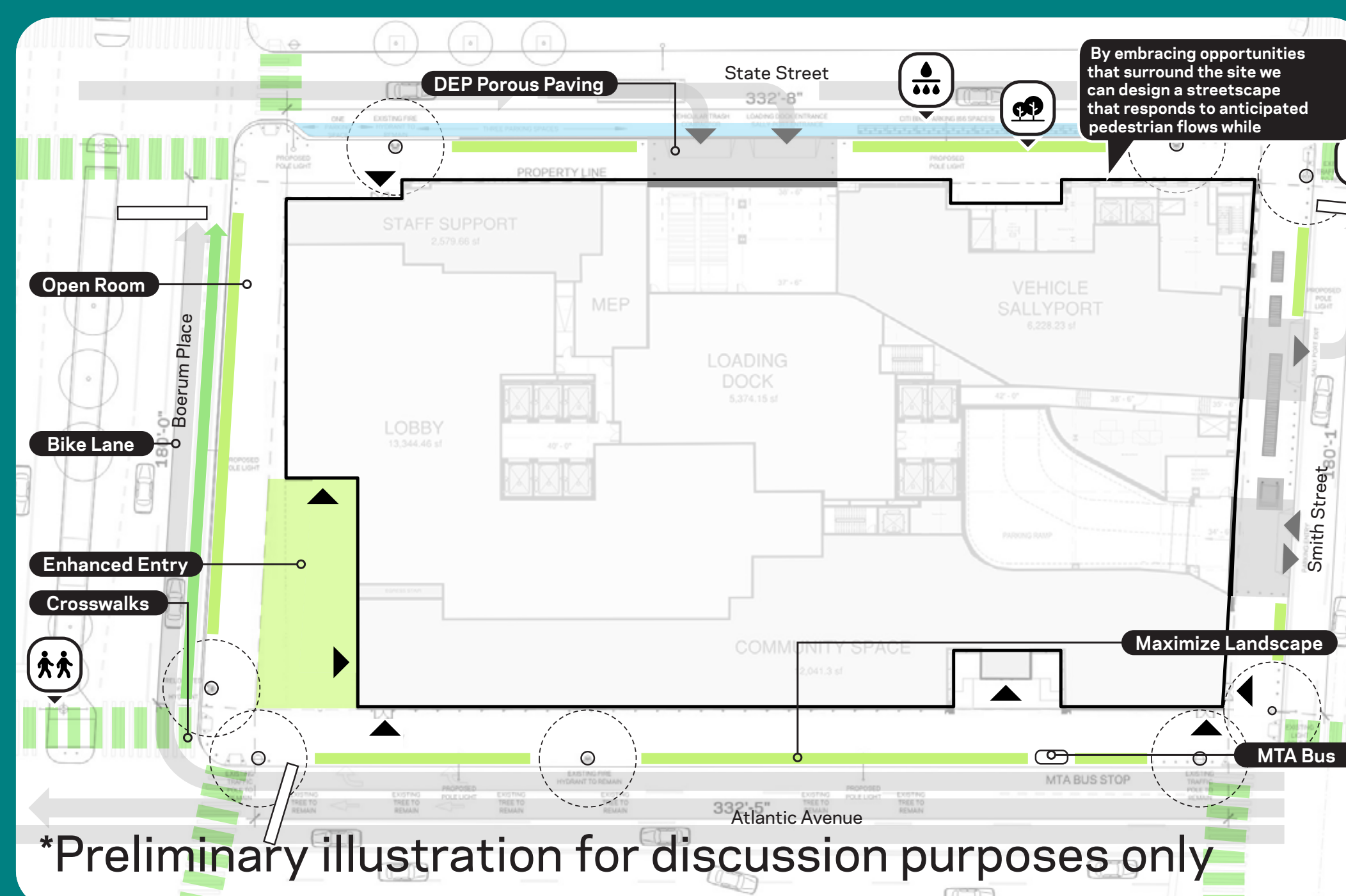
*Preliminary illustration for discussion purposes only

Create a Community Cornerstone



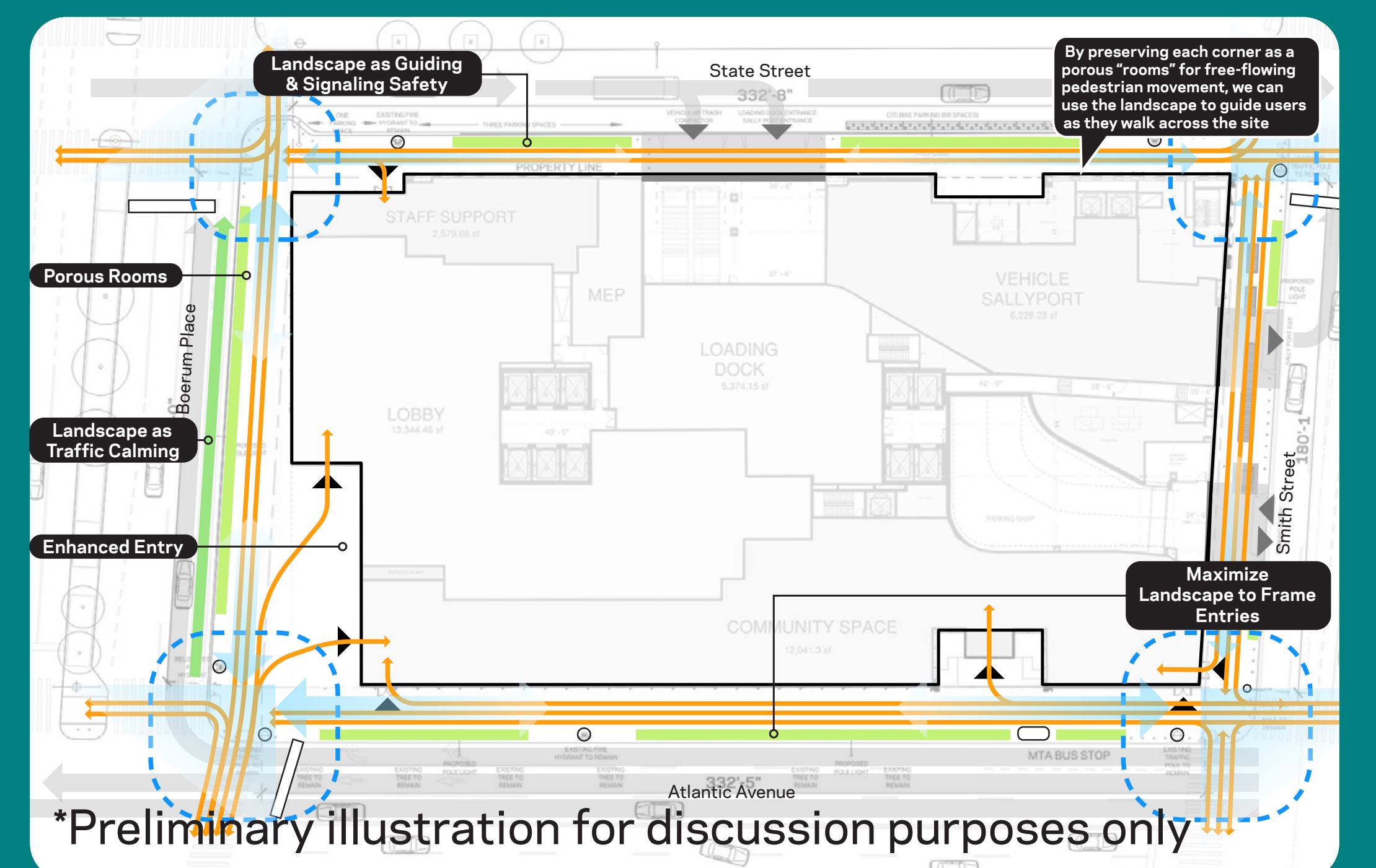
*Preliminary illustration for discussion purposes only

Improve Public Realm Connections



*Preliminary illustration for discussion purposes only

Enhance Civic Experience



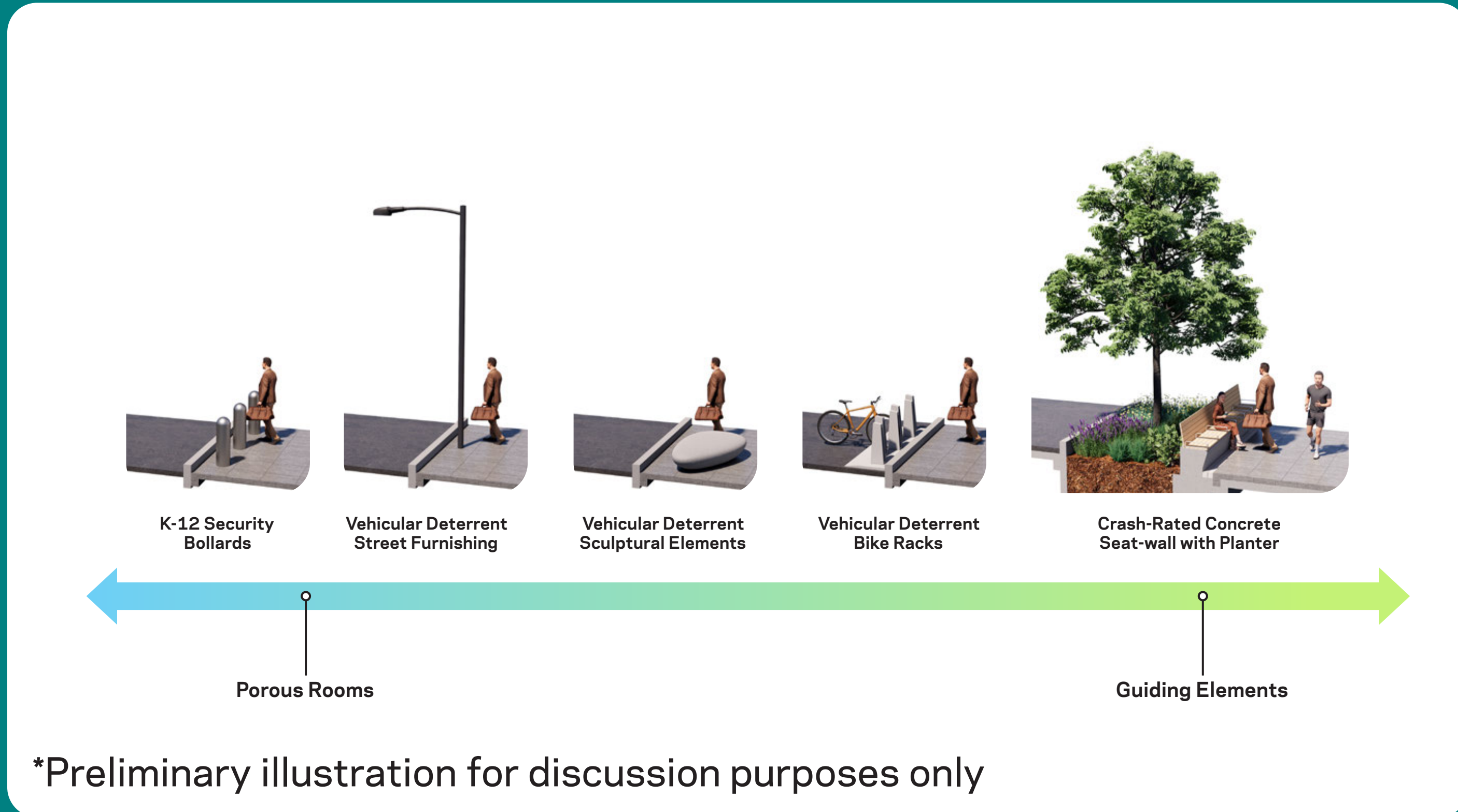
*Preliminary illustration for discussion purposes only

Create a Community Cornerstone

*Preliminary illustrations for discussion purposes only

Public Realm

Enhancing the Streetscape



*Preliminary illustration for discussion purposes only

Security Design Toolkit



*Preliminary illustration for discussion purposes only

Security-integrated streetscape approach

Creating a Human-Centric Street



*Preliminary illustration for discussion purposes only

Atlantic Avenue Study



*Preliminary illustration for discussion purposes only

Boerum Place Study



*Preliminary illustration for discussion purposes only

State Street Study



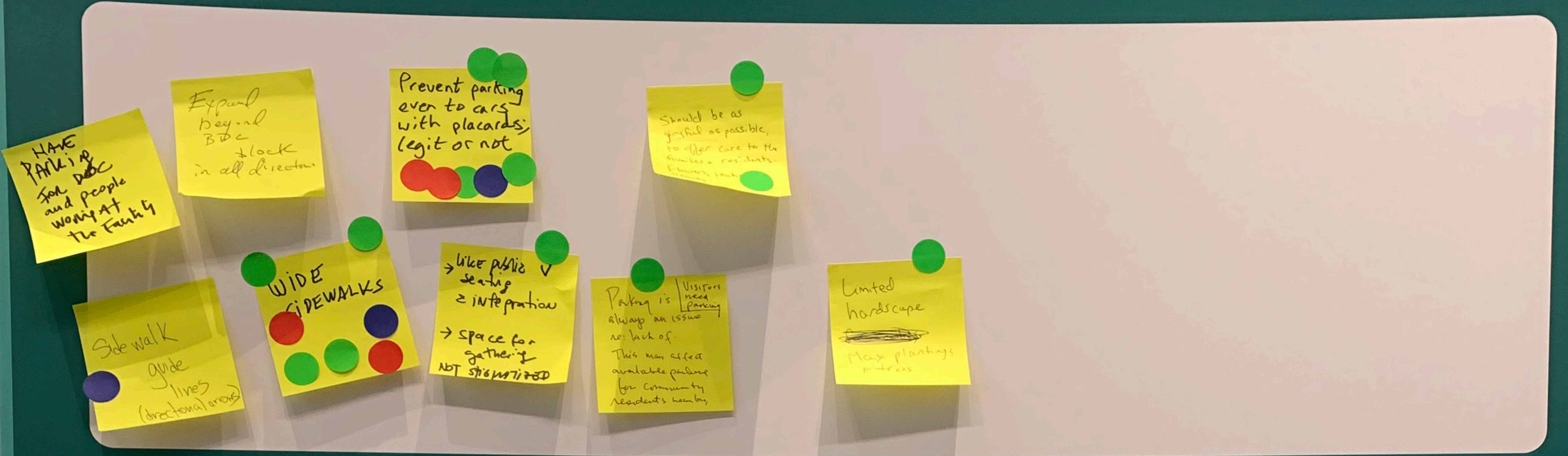
*Preliminary illustration for discussion purposes only

Smith Street Study

*Preliminary illustrations for discussion purposes only

Public Realm

Q: How can the public space around the building enhance the neighborhood?



Q: What kind of outdoor public amenities would you like to see?



Q: What would make you feel comfortable and encourage you to enjoy the public space around the building?

